



COVID-19 OUTBREAK IN KENYA

DAILY SITUATION REPORT - 89

1.0 KEY HIGHLIGHTS

1. **One hundred and thirty-seven (137)** new confirmed COVID-19 cases were reported in the last 24 hours bringing the total number of confirmed cases in Kenya to **3594 cases** as of 14 June. Counties reporting new cases are **Nairobi (92), Mombasa (16), Kajiado (15), Busia (4), Kiambu (4), Kilifi (1), Murang'a (1), Nakuru (1), Nyamira (1), Siaya (1) and Uasin Gishu (1).**
2. **Three (3) deaths have been reported over the last 24 hours.** The total number of deaths reported since the beginning of the outbreak is **103, case fatality rate (CFR) is 2.9 percent.**
3. In the last 24 hours, 32 COVID-19 patients recovered and were discharged bringing the total number of recoveries and discharges for COVID-19 to 1253.
4. As of today, **39 out of 47 counties** have reported cases namely: Nairobi (1640), Mombasa (1037), Busia (312), Kajiado (121), Kiambu (105), Uasin Gishu (61), Migori (43), Kwale (35), Kilifi (34), Taita Taveta (21), Machakos (20), Mandera (18), Kisumu (17), Garissa (16), Wajir (16), Turkana (15), Nakuru (13), Siaya (12), Kitui (10), Nyeri (9), Bungoma (6), Murang'a (5), Isiolo (4), Homa Bay (3), Makueni (3), Kakamega (2), Kisii (2), Laikipia (2), Meru (2), Bomet (1), Elgeyo Marakwet (1), Embu (1), Kericho (1), Kirinyaga (1), Marsabit (1), Nandi (1), Narok (1), Nyamira (1), and Trans Nzoia (1).
5. **Mombasa and Nairobi City** Counties have the highest attack rates of COVID-19 at **85.8** and **37.3** per **100,000** population respectively when compared to **7.6 per 100,000** for the whole country and need enhanced interventions. In addition, the COVID-19 outbreak has so far spread to **83 percent** of the counties in the country. **Risk communication, laboratory testing, and sub – optimal support to sub – national level** have been identified as key challenges.
6. **Three thousand two hundred and thirty-two (90 percent) of the 3594 confirmed cases** are local transmissions.
7. Of the 2,266 contacts under follow up 2,121 (94 percent) were followed up today
8. In the last 24 hours, **3167 samples** were tested across various laboratories of which **137 samples** turned positive for COVID-19. A total of **115336 cumulative tests** have so far been conducted.

**Total Cases
=3594**

**Male = 2469
Female = 1125**

**Deaths
=103**

1.1 Epidemiology

Since 13 March 2020 when the first case was confirmed in Kenya, a total of **3594** confirmed cases and **103** have died giving a case fatality rate of **2.9 percent** have been line listed. Of these, 3232 cases (90 percent) were local transmissions and 362 (10 percent) are imported cases. The Figure 1 below shows trends of cases. Mandatory quarantine was instituted on 25 March 2020 with testing of all quarantined people starting on 29 March 2020. Figure 2 shows cumulative caseload. Figure 3 shows number of samples tested by date indicating the positive and negative results. Laboratory test rate currently stands at 2425 samples per 1,000,000 people.

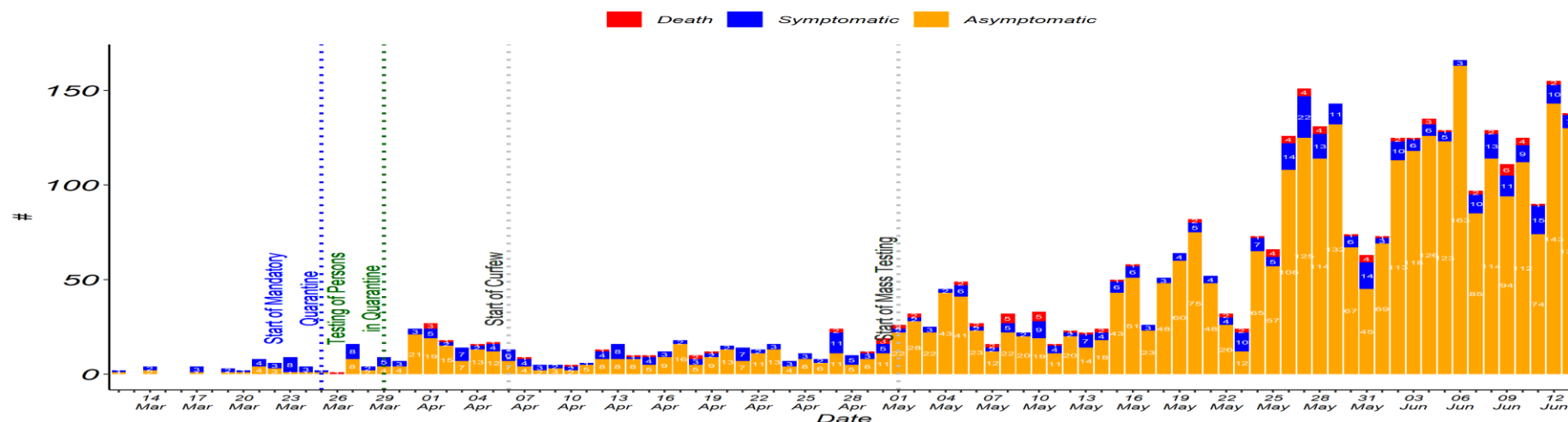


Figure 1: Trends of COVID-19 Outbreak Kenya

1.2 Cumulative Cases

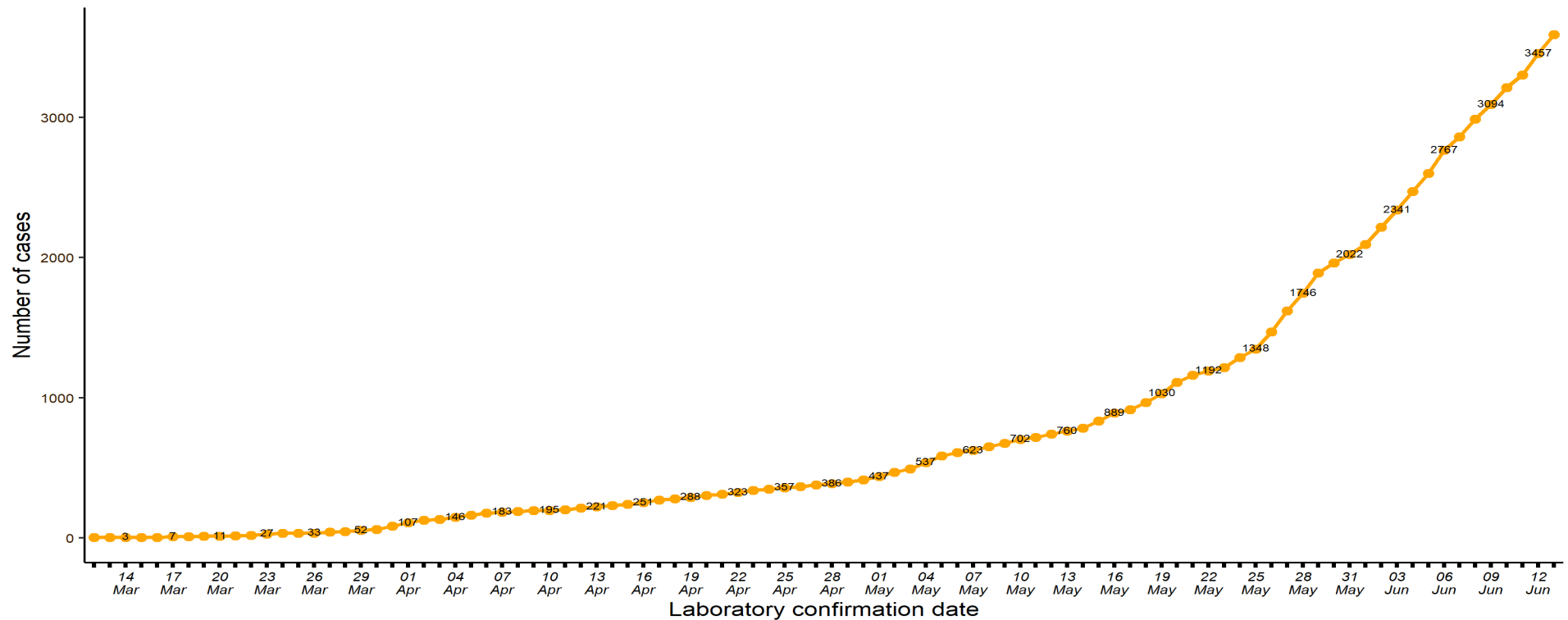


Figure 2: Cumulative case load

1.3 Laboratory Testing

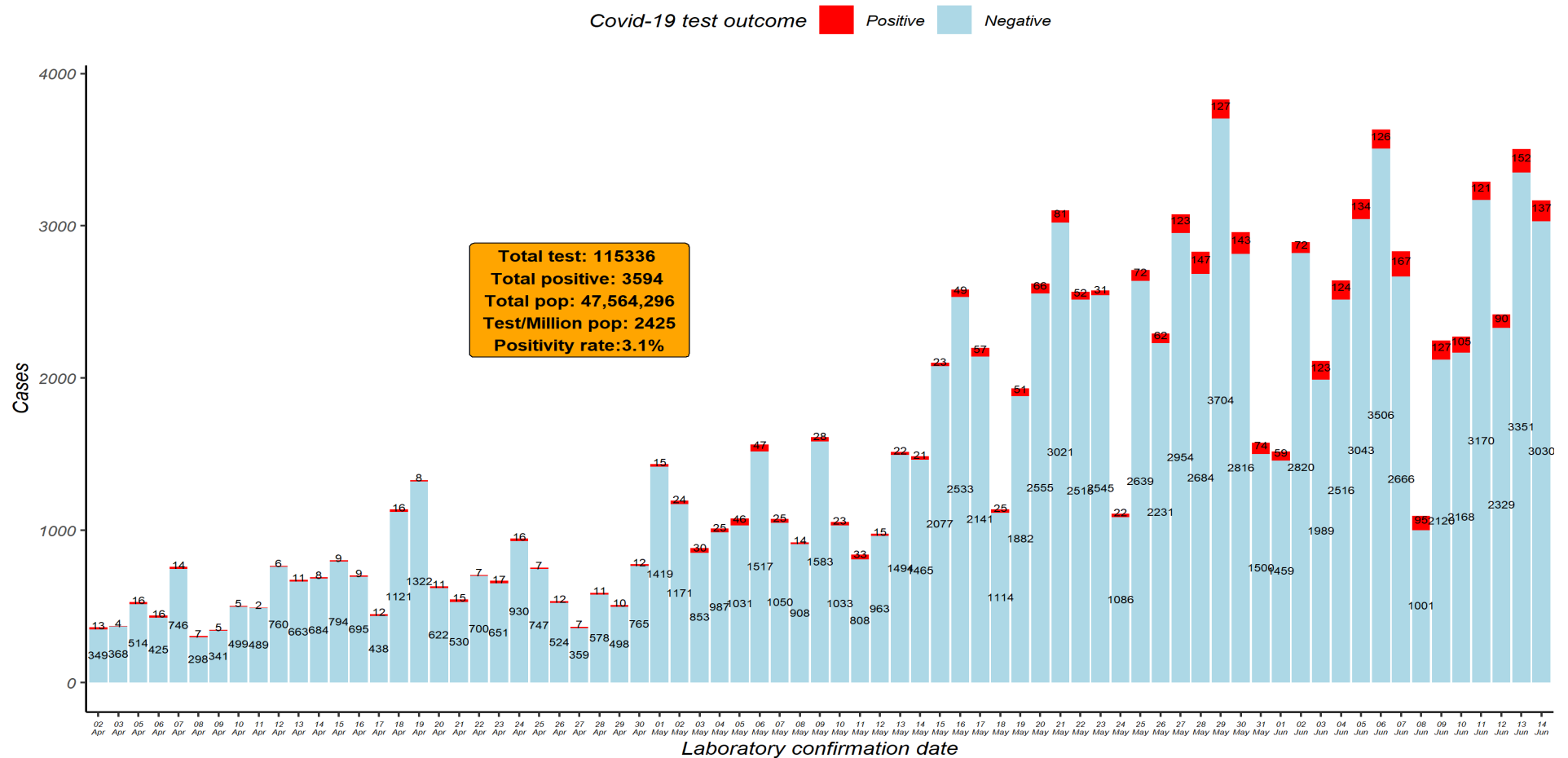


Figure 3: Laboratory Tests Conducted by Date Results were Shared

1.4 Distribution of Confirmed COVID-19 Cases by Presentation

Of the **3594** confirmed cases, 420 (12 percent) presented with symptoms (Figure 4). Cough (48 percent) and fever (42 percent) were predominant presenting symptoms (Figure 5).

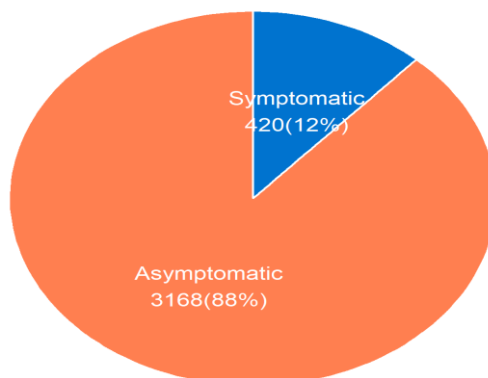


Figure 4: Distribution of Confirmed COVID-19 Cases by Presentation

1.5 Presenting Symptoms among Symptomatic COVID-19 Cases

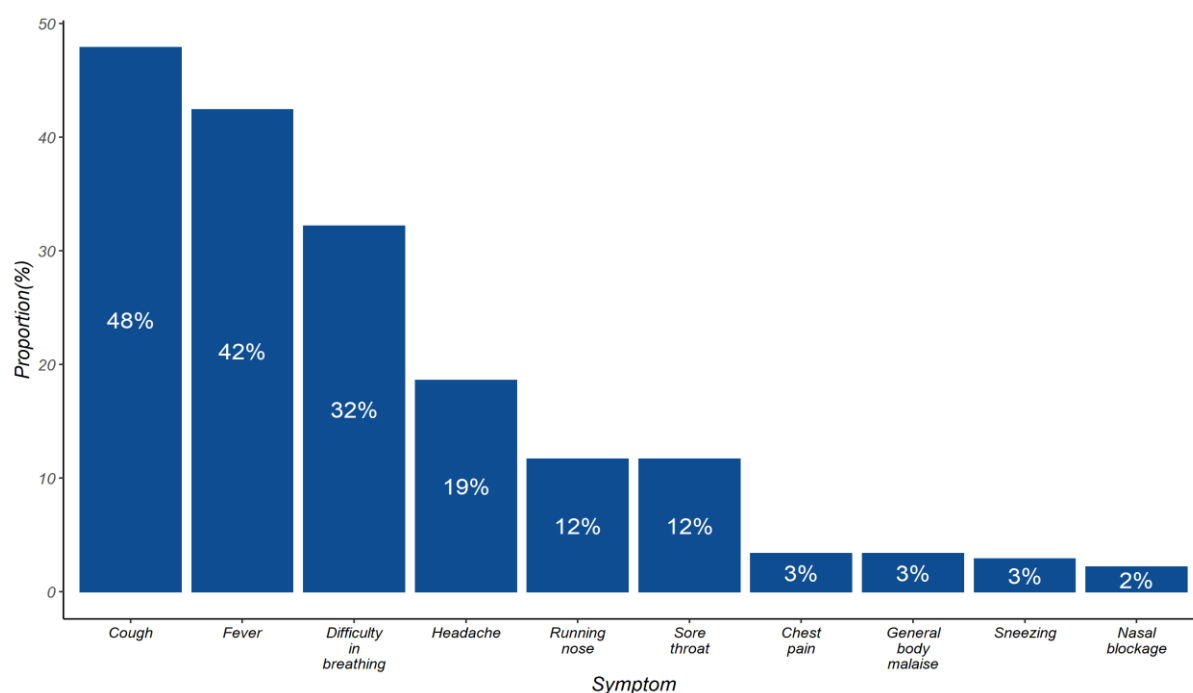


Figure 5: Distribution of Presenting Symptoms among Symptomatic COVID-19 Cases

1.6 Age and Sex Distribution of COVID Confirmed Cases and Deaths

Two thousand four hundred and sixty-nine (69 percent) are males and 1125 (31 percent) are females. Most of the cases; 1143 (32 percent), are in the age group of 30-39 years. Figure 6 below shows age and sex distribution of COVID-19 cases. One hundred and three (103) deaths have been reported so far, 75 (73 percent) being males and 28 (27 percent) were females (Figure 7).

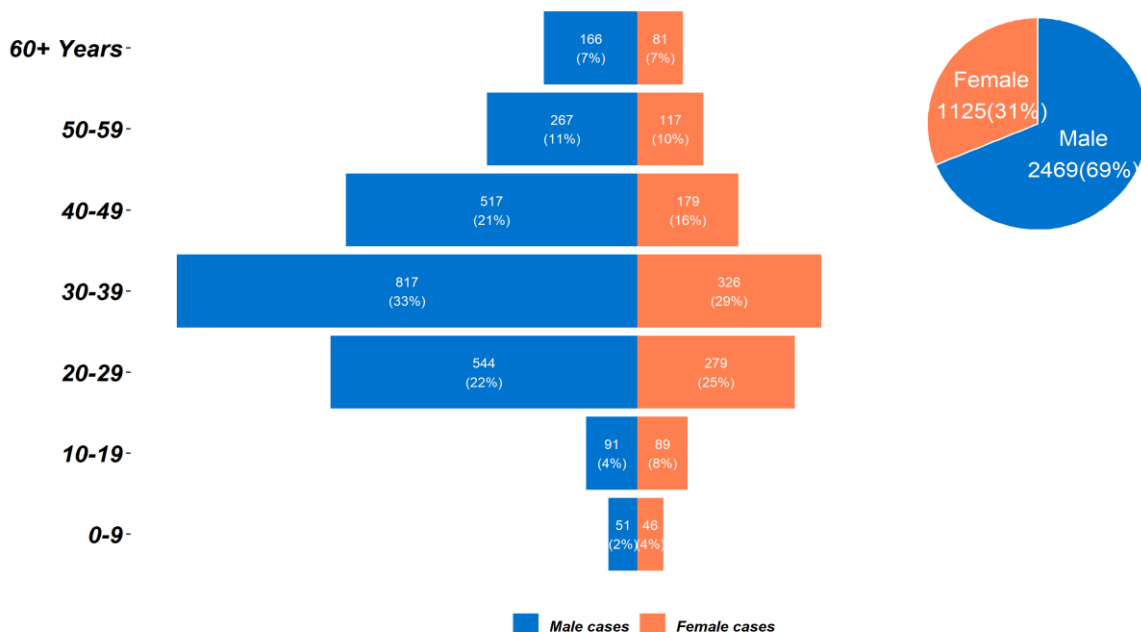


Figure 6: Age and Sex Distribution of COVID-19 Cases Kenya

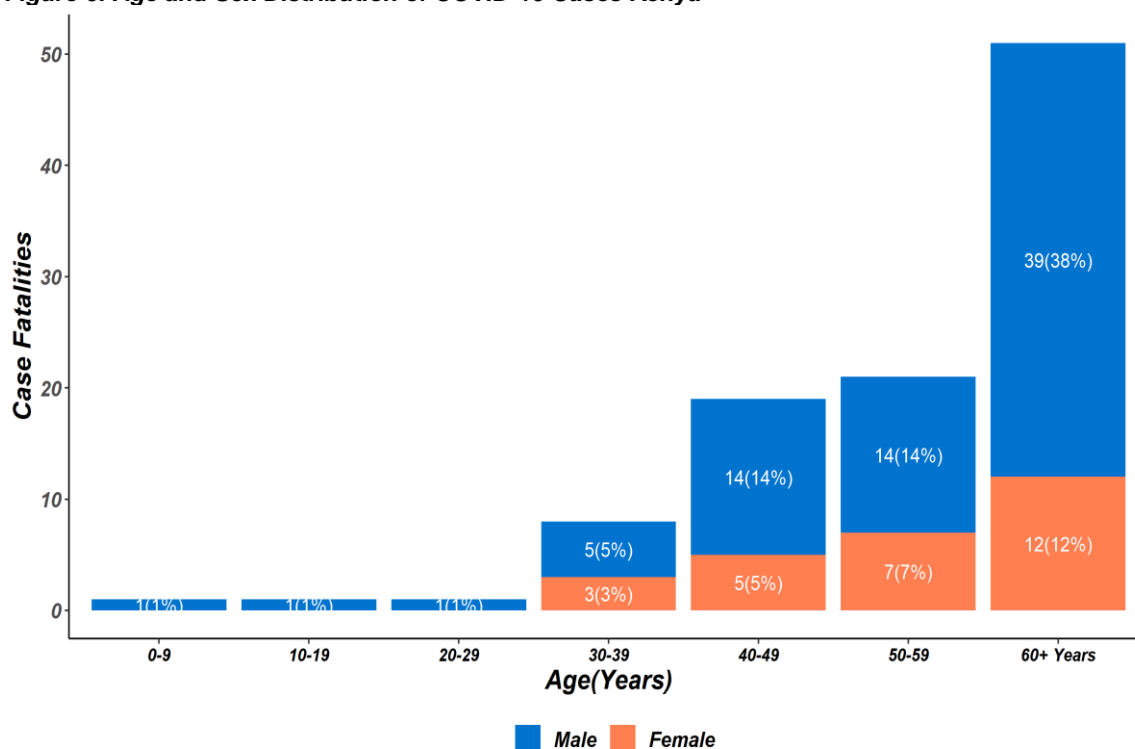


Figure 7: Distribution of Case Fatalities by Age and Sex

1.7 Distribution of Confirmed COVID-19 Cases by County and Transmission Classification

Of the **3594** cases, 1640 (46 percent) are from Nairobi County followed by Mombasa County with 1037 (29 percent) as shown in Figure 8. Mombasa County has the highest attack rate of 85.8 per 100,000 population followed by Nairobi City County at 37.3 per 100,000 population (Table 1).

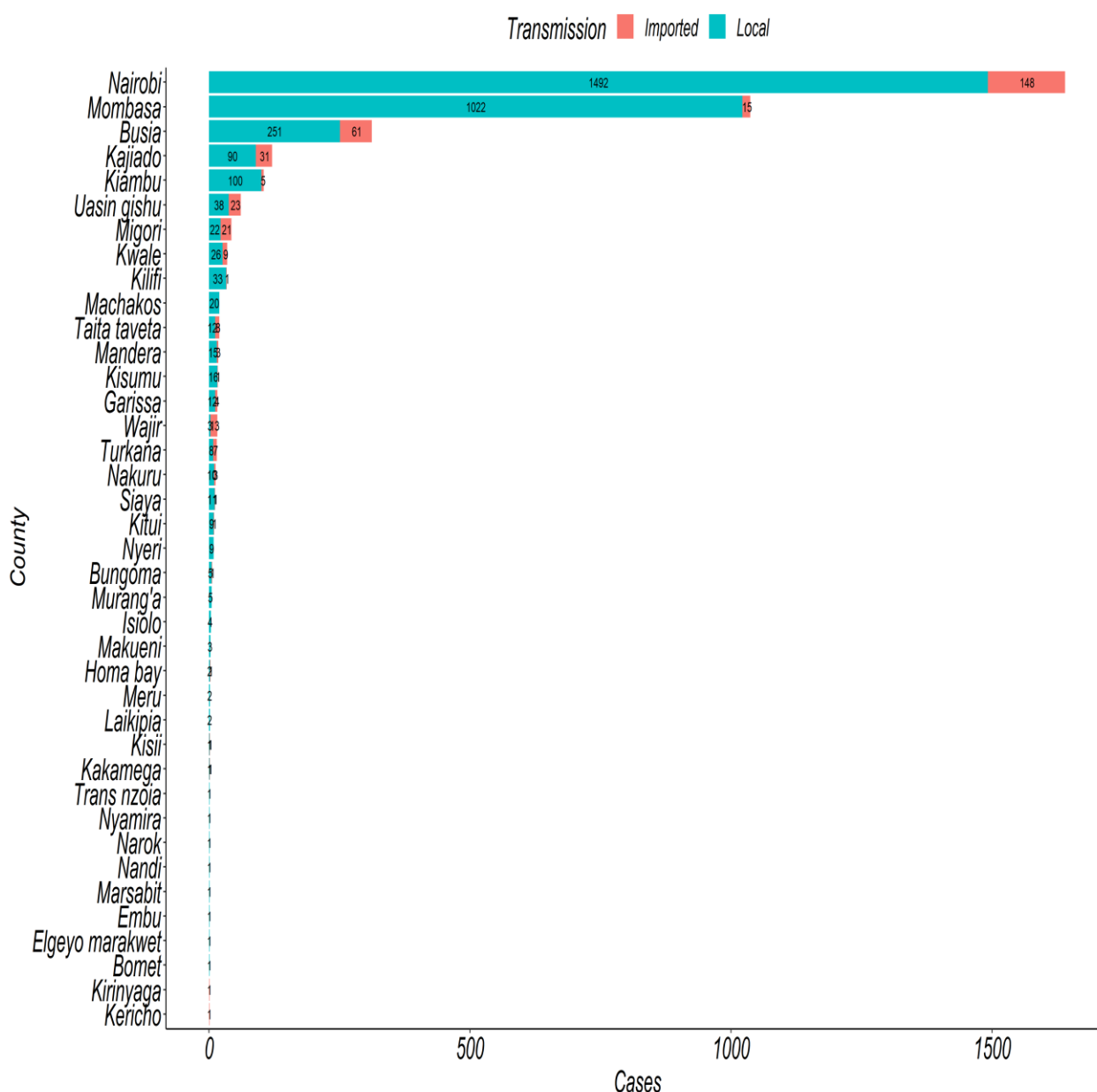


Figure 8: Distribution of confirmed COVID-19 Cases by County and transmission classification

**Table 1: County Attack Rate/100,000 population**

S/ No	County	Population (2019 Census KNBS)	Cumulative Cases	Cases per 100,000 population
1	Mombasa	1,208,333	1037	85.8
2	Nairobi City	4,397,073	1640	37.3
3	Busia	893,681	312	34.9
4	Kajiado	1,117,840	121	10.8
5	Taita/Taveta	340,671	21	6.2
6	Uasin Gishu	1,163,186	61	5.2
7	Kiambu	2,417,735	105	4.3
8	Kwale	866,820	35	4.0
9	Migori	1,116,436	43	3.9
10	Kilifi	1,453,787	34	2.3
11	Mandera	867,457	18	2.1
12	Wajir	781,263	16	2.0
13	Garissa	841,353	16	1.9
14	Turkana	926,976	15	1.6
15	Isiolo	268,002	4	1.5
16	Kisumu	1,155,574	17	1.5
17	Machakos	1,421,932	20	1.4
18	Nyeri	759,164	9	1.2
19	Siaya	993,183	12	1.2
20	Kitui	1,136,187	10	0.9
21	Nakuru	2,162,202	13	0.6
22	Murang'a	1,056,640	5	0.5
23	Laikipia	518,560	2	0.4
24	Bungoma	1,670,570	6	0.4
25	Makueni	987,653	3	0.3
26	Homa Bay	1,131,950	3	0.3
27	Marsabit	459,785	1	0.2
28	Embu	608,599	1	0.2
29	Kirinyaga	610,411	1	0.2
30	Elgeyo/Marakwet	454,480	1	0.2
31	Kisii	1,266,860	2	0.2
32	Nyamira	605,576	1	0.2
33	Meru	1,545,714	2	0.1
34	Trans Nzoia	990,341	1	0.1
35	Nandi	885,711	1	0.1
36	Narok	1,157,873	1	0.1
37	Kericho	901,777	1	0.1
38	Bomet	875,689	1	0.1
39	Kakamega	1,867,579	2	0.1
	Kenya	47,564,300	3594	7.6

1.8 Map of Kenya Showing Distribution of Confirmed COVID-19 Cases by County

COVID19 REPORTED CASES BY COUNTY

As of 14 June 2020

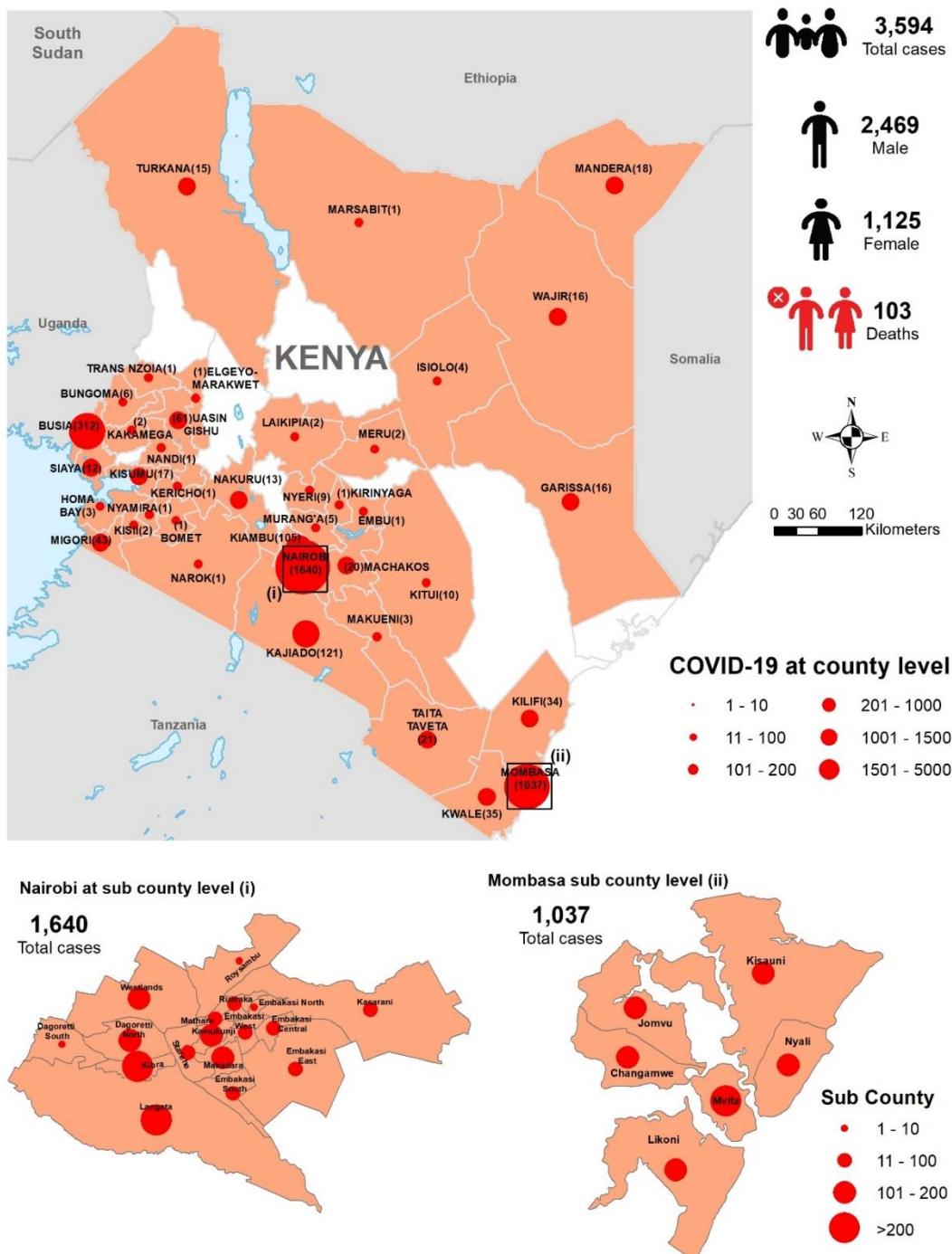


Figure 9: Distribution of confirmed COVID-19 cases by County



1.9 Status of Contract Tracing as at Today

Of the **3594** confirmed COVID-19 cases a total of 8,317 contacts have been listed, 344 contacts (3 percent) have tested positive for COVID-19 (Table 2). Of the 2,266 contacts under follow up 2,121 (94 percent) were followed up today. A total of 145 contacts were not reached today across the affected counties. Table 2 shows summary status of contact tracing as of today.

Table 2: Status of Contract Tracing as at Today

County	Number of Cases forwarded to contact tracing	Cases Pending contact listing	% of cases without contacts	Contacts identified	Contacts finished 14 days	Contacts on follow up	Number Responded today	Response rate	Positive Contacts
Bomet	2	-	-	35	35	0	0	-	3
Bungoma	6	4	67%	12	12	0	0	-	1
Busia	308	290	94%	18	14	4	5	125%	0
Elgeyo Marakwet	1	-	-	0	0	0	0	-	0
Embu	1	-	-	30	0	30	30	100%	0
Garissa	16	4	25%	81	0	81	81	100%	3
Homa Bay	4	1	25%	93	89	4	0	0%	0
Isiolo	4	-	-	105	55	50	48	96%	1
Kajiado	105	27	26%	570	359	211	205	97%	8
Kakamega	2	1	50%	13	13	0	0	-	0
Kericho	2	1	50%	1	0	1	1	100%	0
Kiambu	100	57	57%	334	135	199	186	93%	10
Kilifi	34	17	50%	322	265	57	55	96%	9
Kirinyaga	1	-	-	0	0	0	0	-	0
Kisii	2	-	-	50	1	49	49	100%	1
Kisumu	17	14	82%	5	0	5	5	100%	0
Kitui	10	1	10%	71	54	17	17	100%	6

County	Number of Cases forwarded to contact tracing	Cases Pending contact listing	% of cases without contacts	Contacts identified	Contacts finished 14 days	Contacts on follow up	Number Responded today	Response rate	Positive Contacts
Kwale	35	27	77%	119	119	0	0	-	0
Laikipia	2	1	50%	26	0	26	26	100%	0
Machakos	21	16	76%	25	25	0	0	-	0
Makueni	3	1	33%	15	0	15	15	100%	2
Mandera	18	-	-	176	176	0	0	-	6
Marsabit	1	1	100%	11	0	11	11	100%	0
Meru	3	1	33%	63	29	34	34	100%	0
Migori	42	25	60%	153	107	46	46	100%	1
Mombasa	1022	627	61%	2104	1647	457	426	93%	127
Murang'a	5	2	40%	25	15	10	10	100%	0
Nairobi	1541	831	54%	3082	2413	669	583	87%	159
Nakuru	14	2	14%	310	275	35	35	100%	0
Narok	1	1	100%	0	0	0	0	-	0
Nyeri	9	3	33%	81	0	81	81	100%	4
Siaya	11	2	18%	82	82	0	0	-	0
Taita Taveta	21	7	33%	48	0	48	48	100%	0
Trans Nzoia	1	-	-	10	0	10	10	100%	0
Turkana	16	13		59	0	59	59	100%	0
Uasin Gishu	60	42		109	60	49	49		3
Wajir	16	2		79	71	8	6		
Total	3457	2021	58%	8317	6051	2266	2121	94%	344

2.0 KEY ACTIONS

2.1 Coordination

- Regular coordination meetings ongoing.

2.2 Case Management and Infection Prevention & Control

- In the last 24 hours, 32 COVID-19 patients recovered and were discharged bringing the total number of recoveries and discharges for COVID-19 to 1253.

2.3 Surveillance, Laboratory and Points of Entry

- In the last 24 hours, 3167 samples were tested across various laboratories of which 137 samples turned positive for COVID-19. A total of 115336 cumulative tests have so far been conducted.

3.0 KEY CHALLENGES

- Sub – optimal operational support for the sub – county teams to investigate alerts, rapidly respond, list and follow up contacts.
- Inadequate bed capacity for isolation of cases, best captured in Busia County where facilities are overstretched.
- Commodity insecurity of personal protective equipment at the sub – national level

4.0 NEXT STEPS

- The MOH is rolling out the home and community-based isolation and quarantine protocols across the country to reduce excess loads on the current facilities.
- Roll out of NPHLS Laboratory Information System to all COVID-19 testing laboratories streamline submission of results.
- County Governments to increase isolation bed capacity in every county.
- Mobilization of support (operational and logistical) for the sub – national level response.

Emergency Operation Center:

Telephone: 0729 471 414, 0732 353 535, 0800 721316(Toll Free)

COVID-19 Call center: *719# (short message only), 719 (Audio)

Email: manager.eockenya@gmail.com