



COVID-19 OUTBREAK IN KENYA

DAILY SITUATION REPORT - 652

1. KEY HIGHLIGHTS

- 1. Three thousand two hundred and ninety-seven (3297)** new confirmed COVID-19 cases were reported in the last 24 hours bringing the total number of confirmed cases in Kenya to **288951 cases** as of 29 December 2021. Three thousand and sixty-four (3064) of the cases are Kenyans of which seven (7) have a travel history. Three thousand two hundred and eighty-nine (3289) of the cases are local transmissions. Two hundred and thirty-two (232) of the cases are non-Kenyans. Counties reporting new cases are **Nairobi (982), Makeni (233), Siaya (226), Kiambu (165), Nakuru (115), Kakamega (114), Migori (114), Machakos (110), Kisumu (99), Nyeri (97), Mombasa (92), Kericho (87), Nyamira (81), Kajiado (76), Nyandarua (69), Kilifi (63), West Pokot (62), Trans Nzoia (59), Murang'a (47), Busia (43), Laikipia (39), Baringo (38), Kitui (33), Uasin Gishu (31), Garissa (28), Homa Bay (27), Kisii (25), Kwale (20), Meru (20), Kirinyaga (18), Taita Taveta (17), Bomet (11), Embu (9), Lamu (9), Narok (9), Bungoma (8), Samburu (6), Vihiga (6), Turkana (5), Mandera (1), Nandi (1) and Tharaka Nithi (1).**
- 2. Eight (8) deaths have been reported over the last 24 hrs.** The total number of deaths reported since the beginning of the outbreak is **5372, case fatality rate (CFR) is 1.9%**
- 3. As of today, forty-seven (47) counties** have reported cases namely: Nairobi (117429), Kiambu (18922), Mombasa (16652), Nakuru (15305), Uasin Gishu (9446), Machakos (7266), Kisumu (7226), Kajiado (7182), Kilifi (6365), Busia (6283), Kericho (5274), Nyeri (4965), Siaya (4693), Murang'a (3960), Kitui (3850), Meru (3821), Kakamega (3467), Kisii (3150), Bungoma (2772), Makeni (2713), Laikipia (2700), Migori (2686), Nyandarua (2602), Garissa (2440), Embu (2328), Turkana (2327), Nandi (2215), Trans nzoia (2193), Kirinyaga (1978), Homa bay (1849), Taita taveta (1735), Baringo (1447), Nyamira (1390), Bomet (1319), Narok (1238), Kwale (1094), Tharaka Nithi (997), Marsabit (865), Vihiga (840), Lamu (726), Isiolo (725), West pokot (688), Elgeyo marakwet (439), Mandera (404), Tana river (383), Samburu (311), and Wajir (291).
- 4. Nairobi city and Mombasa** Counties have the highest attack rates of COVID-19 at **2670.6** and **1378.1** per **100,000** population respectively when compared to **607.5/100,000** for the whole country and need enhanced interventions. In addition, the COVID-19 outbreak has so far spread to **100%** of the counties in the country. **Risk communication, laboratory testing, and contact tracing** have been identified as the key challenges
- 5. Two hundred and seventy-three thousand nine hundred and fourteen - 273914 (95%) of the 288951 confirmed cases** are local transmissions.
- 6. In the last 24 hours, 9,637 samples were tested across various laboratories of which three thousand, two hundred, and ninety-seven (3,297) samples turned positive for COVID-19. A total of 3,009,185 cumulative tests have so far been conducted.**
- 7. In the last 24 hours, 236 COVID-19 patients (Health Facility: 63, HBIC: 173) recovered and were discharged bringing the total number of recoveries and discharges for COVID- 250,963 (Facility: 48,888, HBIC: 202,075).**

Total Cases
=288,951

Male = 165,176
Female = 123,775

Deaths
=5372

1.1 Epidemiology

Since 13 March 2020 when the first case was confirmed in Kenya, a total of **288,951** confirmed cases and **5372** deaths giving a case fatality rate of **1.9%** have been line-listed. Of these, 273914 cases (95%) were local transmissions and 15036 (5%) are imported cases. Figure 1 below shows the trends of cases.

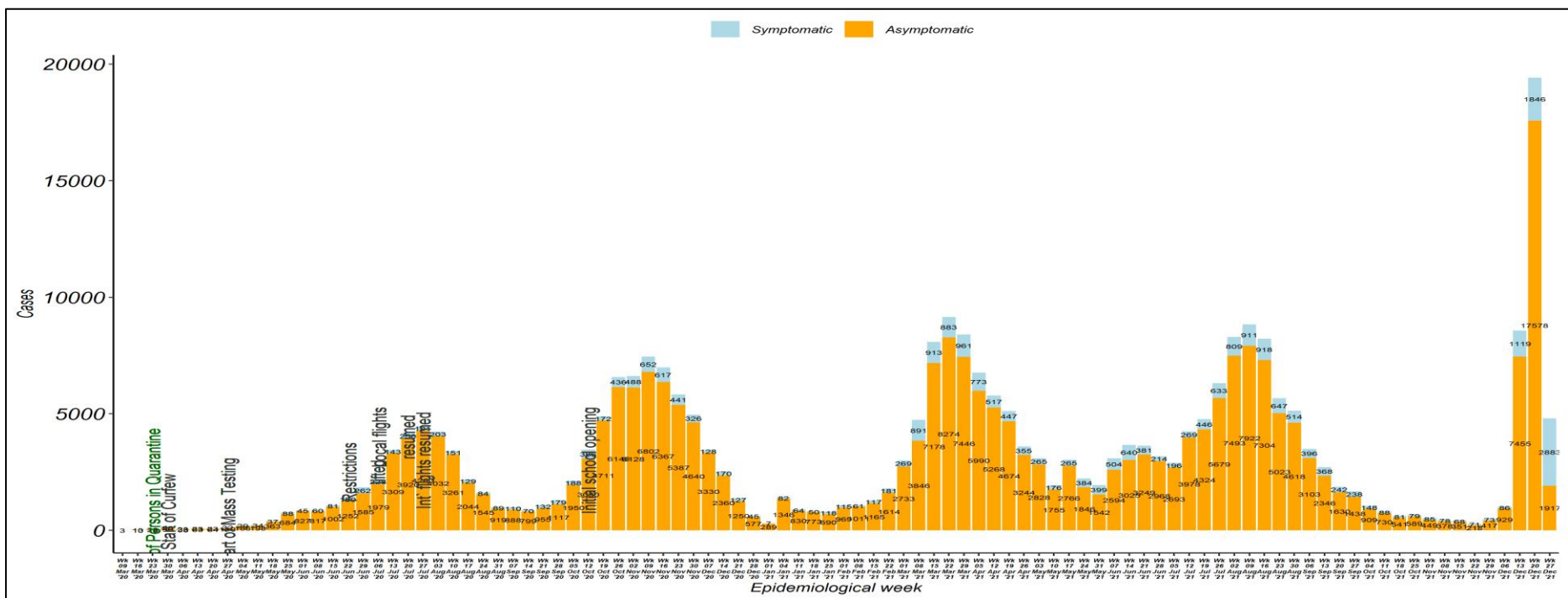


Figure 1: Trends of COVID-19 Outbreak Kenya



1.2 The trends of COVID-19 deaths

A total of **5372** cases died since the beginning of the outbreak giving a case fatality rate of **1.9%**. Figure 2 shows the trend of COVID-19 deaths by week.

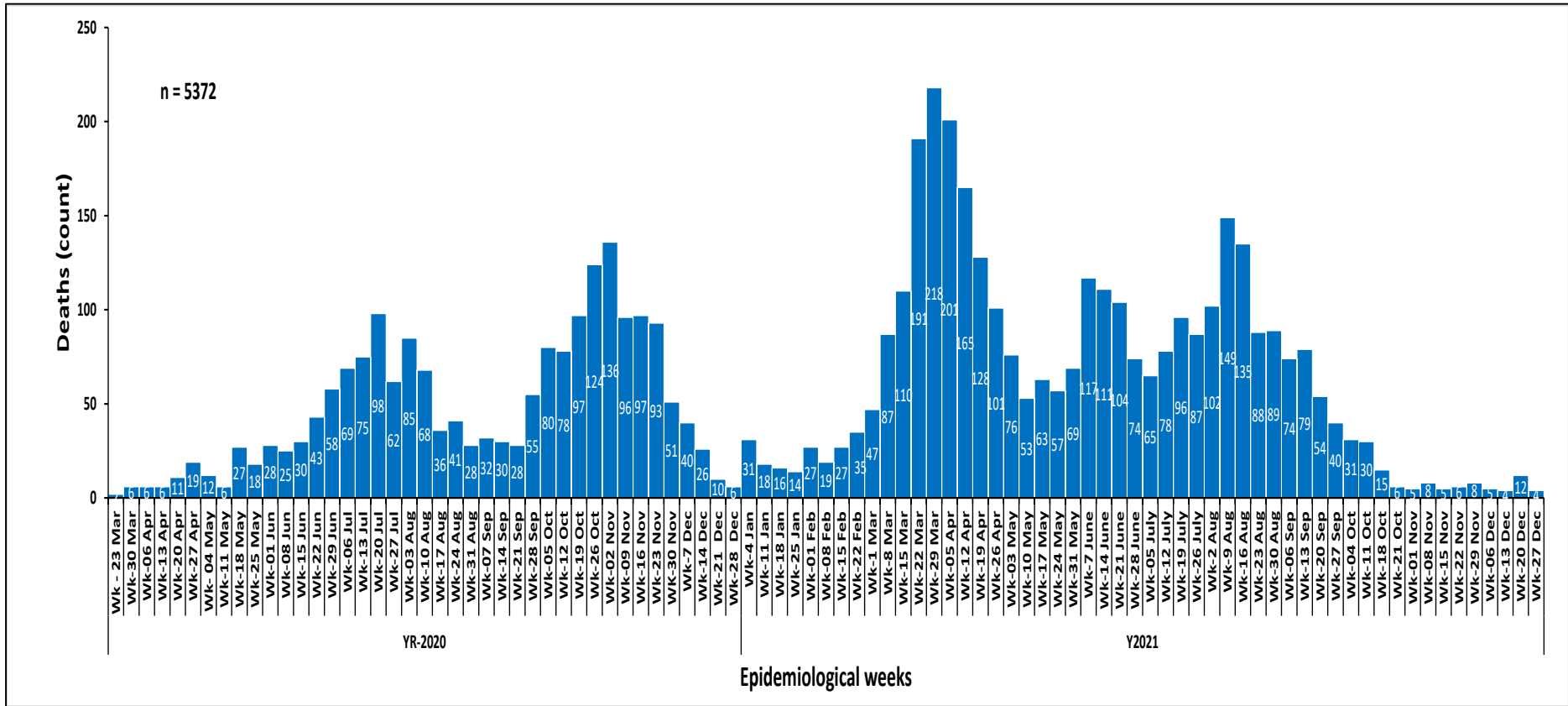


Figure 2: Fatalities by week



1.3 National caseload vs Nairobi County caseload

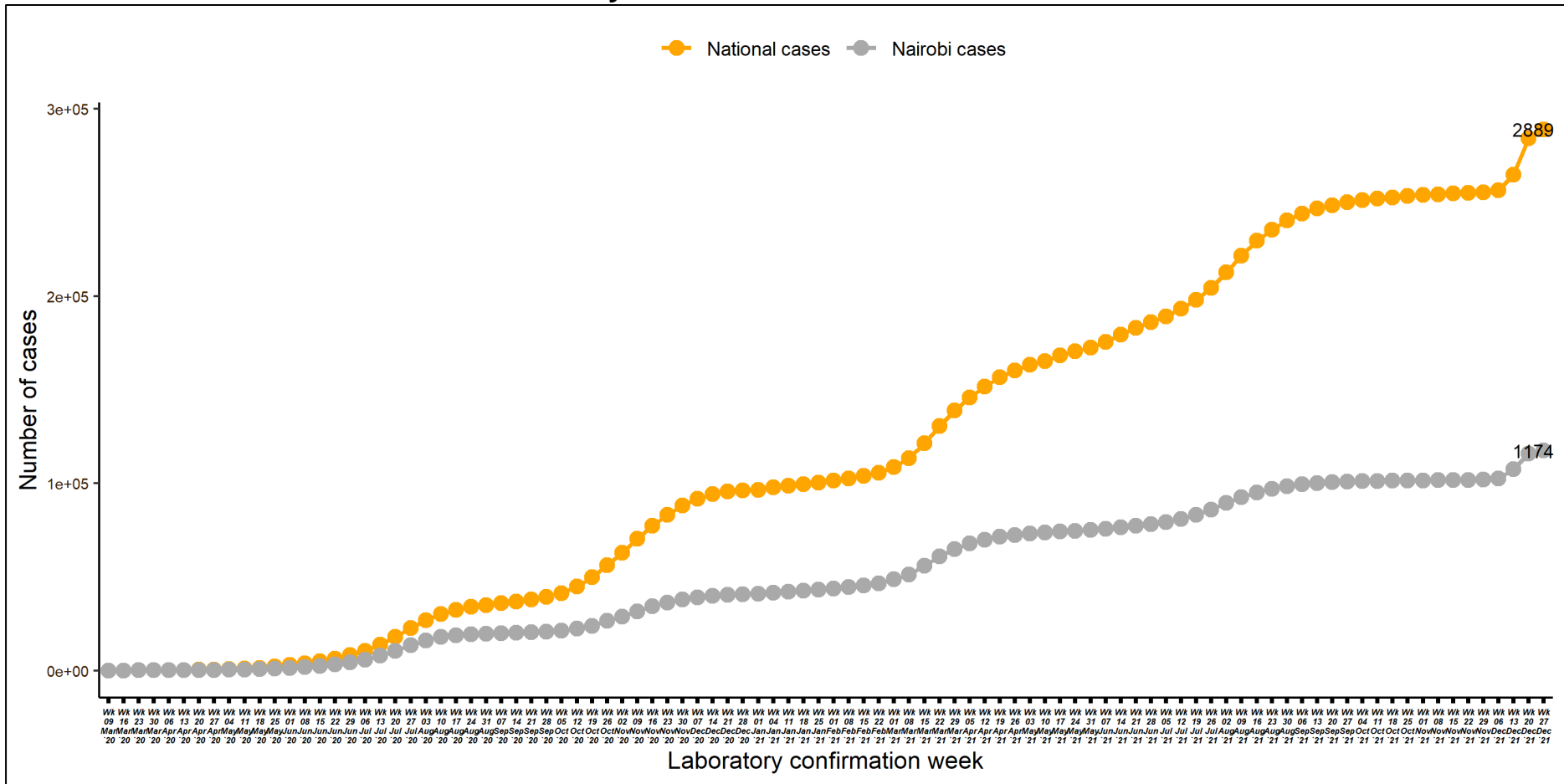


Figure 3: Cumulative cases by week of confirmation. Comparing National cases and Nairobi County cases



1.4 Laboratory testing

WHO recommends that one of the indicators that the pandemic is under control, is when < 5% of samples tested are positive for COVID-19 for the past 2 weeks, assuming that surveillance for suspected cases is comprehensive and testing rate of suspect cases, is optimum at least 1/1000 population/week. The laboratory test rate currently stands at **63,265.6** samples per 1,000,000 people. Figure 4 shows the weekly testing rate/1000 population/week.

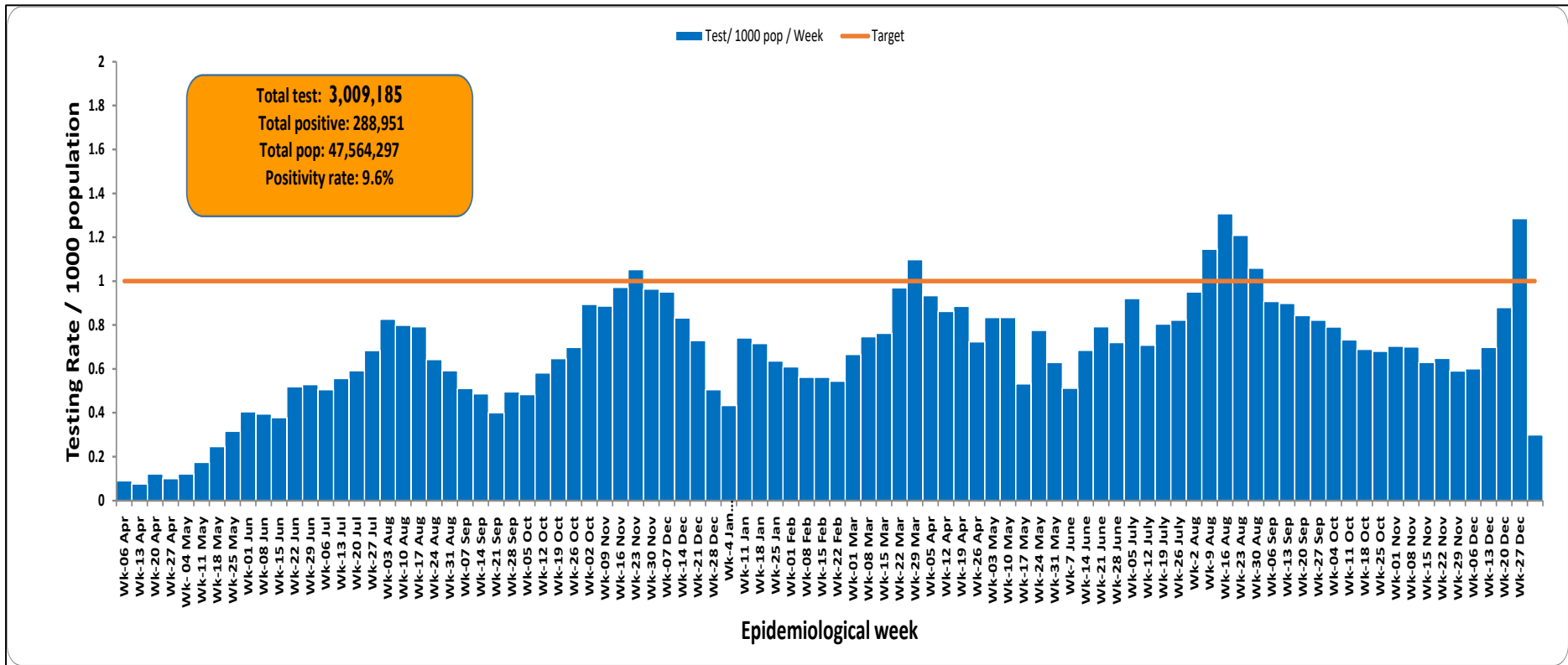


Figure 4: Laboratory Tests Conducted by Date Results were Shared



1.5 Distribution of Confirmed COVID-19 Cases by Presentation and Presentation of Symptoms among Symptomatic cases

Of the **288,951** confirmed cases, 29949(10%) presented with symptoms (Figure 5). Cough (52%) and Fever (33%) were predominant presenting symptoms.

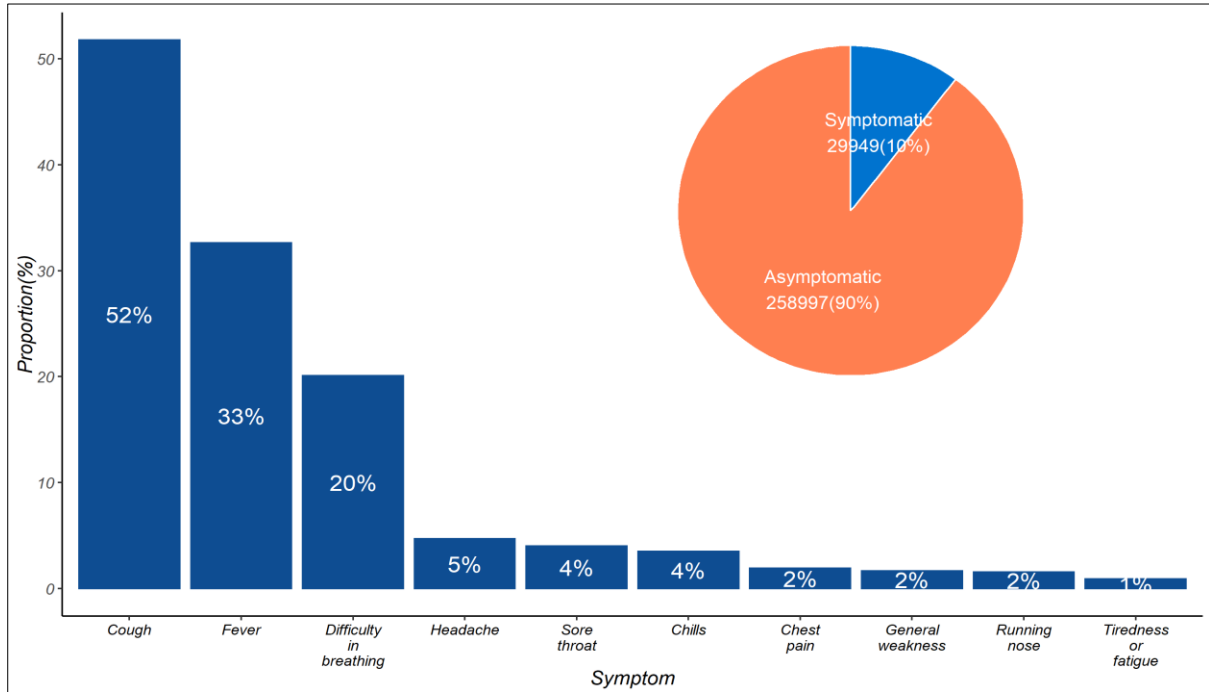


Figure 5: Distribution of Presenting Symptoms among Symptomatic COVID-19 Cases



1.6 Age and Sex Distribution of COVID Confirmed Cases and Deaths

One hundred and sixty-five thousand one hundred and seventy-six (57%) are males and 123,775 (43%) are females. Most of the cases; 76030 (26%), are in the age group of 30-39 years. Figure 6 below shows the age and sex distribution of COVID-19 cases.

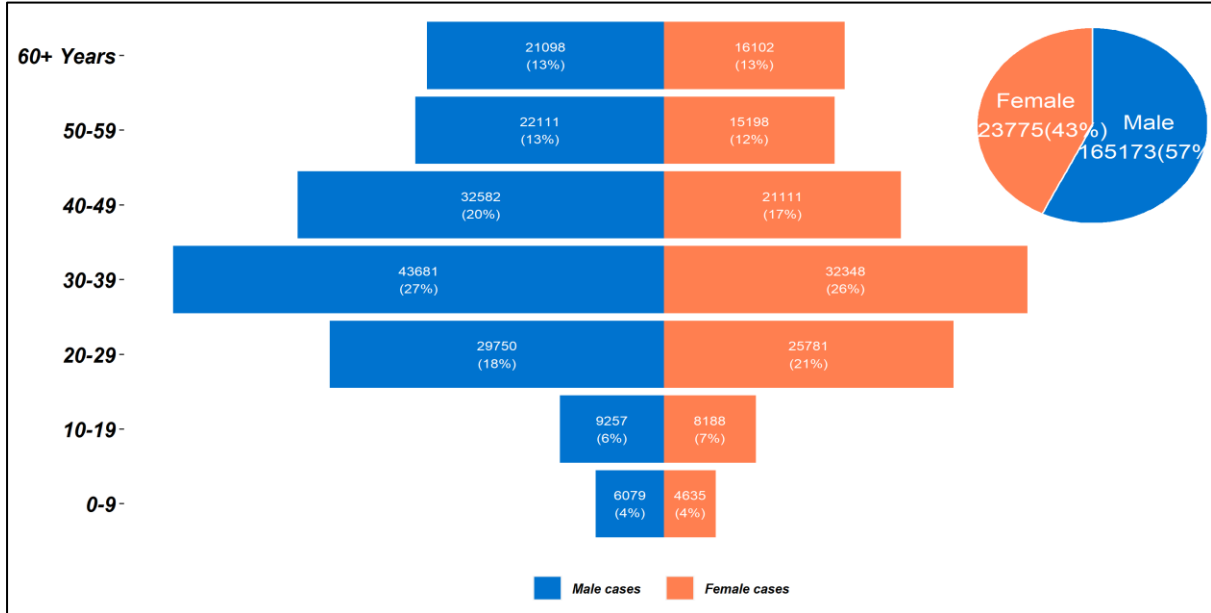


Figure 6: Age and Sex Distribution of COVID-19 Cases Kenya

A total of 5372 deaths have been reported so far, 3444 (64%) being males and 1928 (36%) being females (Figure 7).

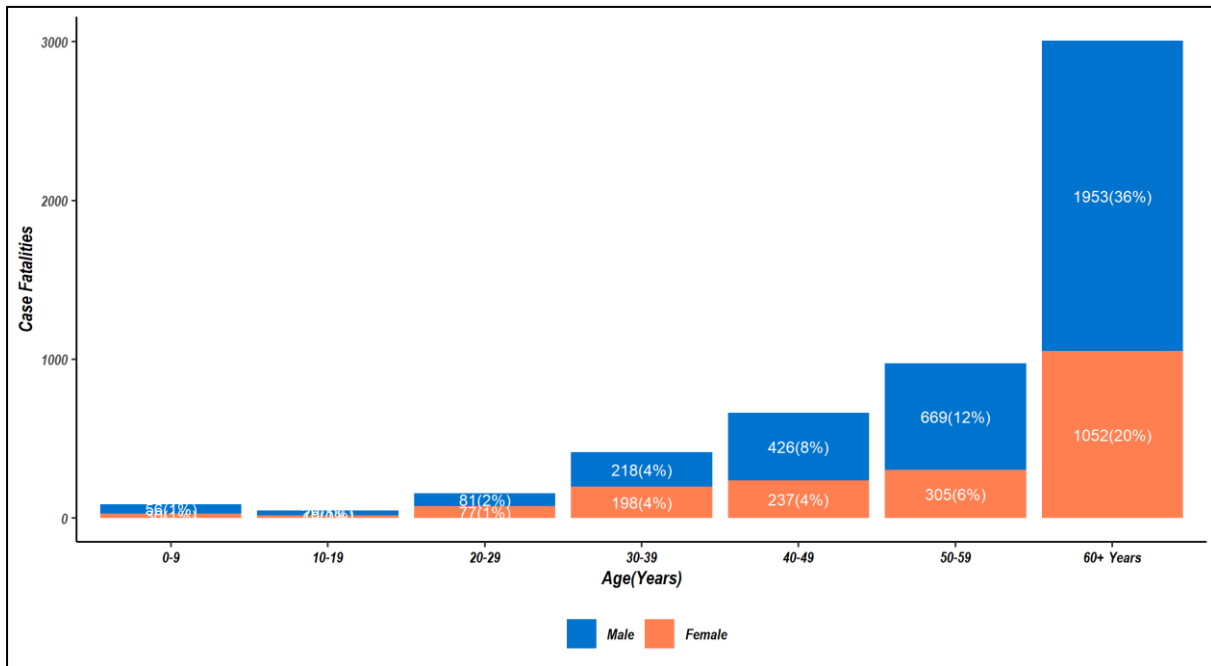


Figure 7: Distribution of Case Fatalities by Age and Sex



1.7 Trends of health care workers

Among the cases who had their occupation filled in, a cumulative of 10934 health professionals (336 new cases) and 53 mortalities (No new deaths) have been reported in all 47 counties.

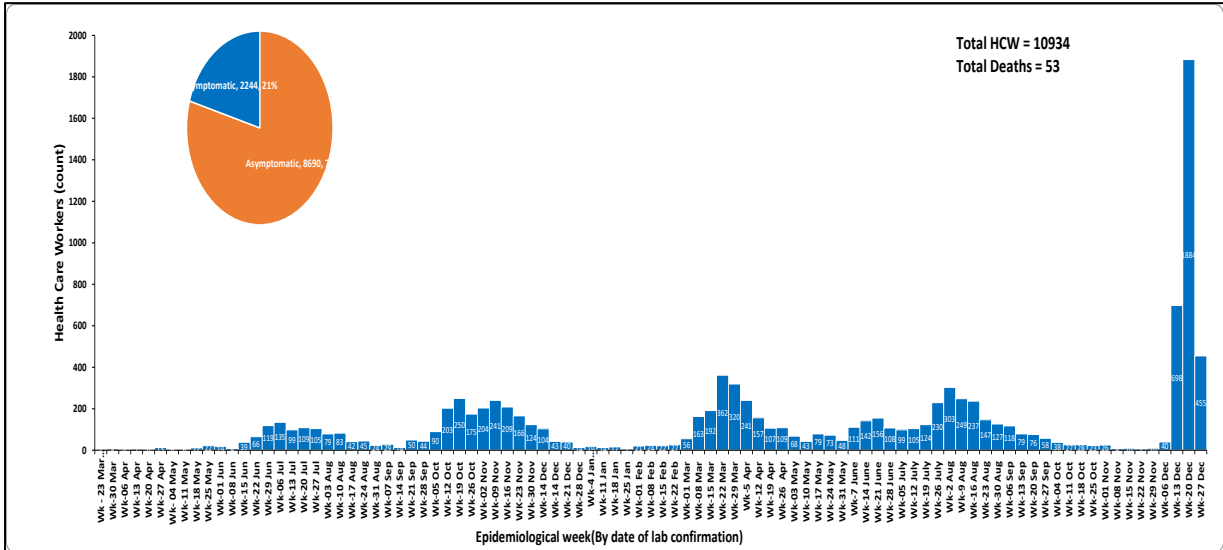


Figure 8: Covid-19 cases among health care workers

1.8 Figure 9 shows cases among health care workers by county

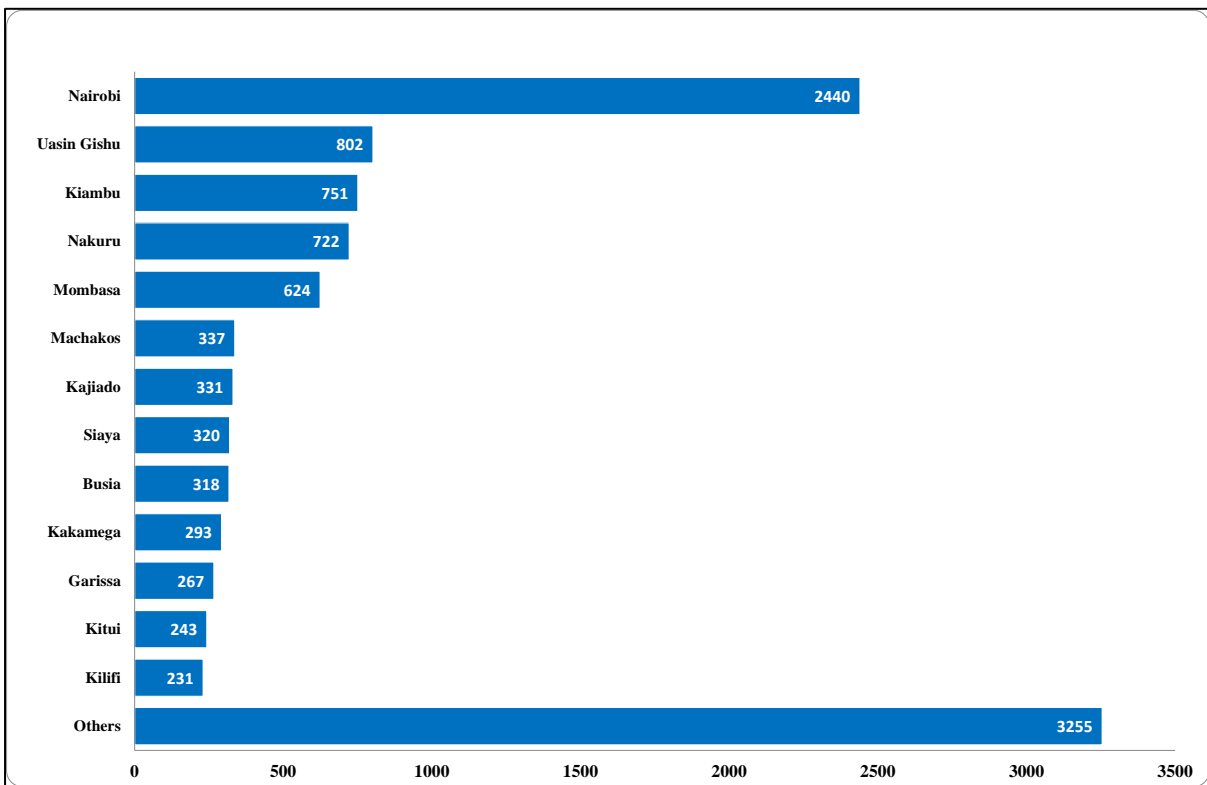


Figure 9: Health care workers cases by counties

Other counties reporting health care workers cases include – Nyeri (213), Kisumu(202), Turkana (188), Makueni(175), Meru (183), Kisii (164), Taita Taveta(149), Murang’a(144), Bungoma(143), Migori (141), Homa Bay(140), Nyandarua (129), Nandi(124), West Pokot(120), Laikipia (118), Tharaka Nithi(114), Kirinyaga(92), Kericho(92), Narok(84), Lamu(71), Isiolo(61), Embu(60), Marsabit (55), Tana River (35), Bomet(33), Baringo(33), Elgeyo Marakwet(30), Vihiga (29), Wajir(28), Kwale (25), Mandera(24), Trans Nzoia(22), Samburu (19), Nyamira (15).

1.9 Distribution of Confirmed COVID-19 Cases by County and Transmission Classification

Of the **288,951** cases, 117429 (41%) are from Nairobi County followed by Kiambu County with 18922 (7%) as shown in Table 1.

Table 1: Distribution of confirmed COVID-19 Cases by County and transmission classification

County	Imported	Local
Nairobi	580	111715
Kiambu	37	18018
Mombasa	450	15695
Nakuru	39	14357
Uasin gishu	31	8881
Machakos	12	6954
Kajiado	49	6858
Kisumu	12	6804
Kilifi	20	6056
Busia	176	6003
Kericho	2	4966
Nyeri	2	4745
Siaya	3	4316
Murang'a	1	3733
Kitui	2	3703
Meru	0	3587
Kakamega	8	3220
Kisii	2	3009

County	Imported	Local
Bungoma	5	2705
Makueni	3	2602
Laikipia	2	2538
Nyandarua	2	2479
Migori	22	2363
Garissa	5	2355
Embu	0	2217
Turkana	22	2203
Trans nzoia	1	2121
Nandi	0	2087
Kirinyaga	1	1865
Homabay	4	1768
Taita taveta	9	1569
Baringo	1	1400
Nyamira	0	1297
Bomet	0	1265
Narok	2	1173
Kwale	16	970
Tharaka nithi	0	953
Marsabit	0	824
Vihiga	1	790
Lamu	0	713
Isiolo	2	706
West pokot	0	595
Elgeyo marakwet	0	426
Mandera	5	370
Tana river	0	363
Samburu	0	308
Wajir	17	269



1.10 Map of Kenya showing COVID-19 attack rate by County per 100,000 population

Nairobi City County has the highest attack rate of 2670.6 per 100,000 population followed by Mombasa County at 1378.1 per 100,000 population (Figure 10).

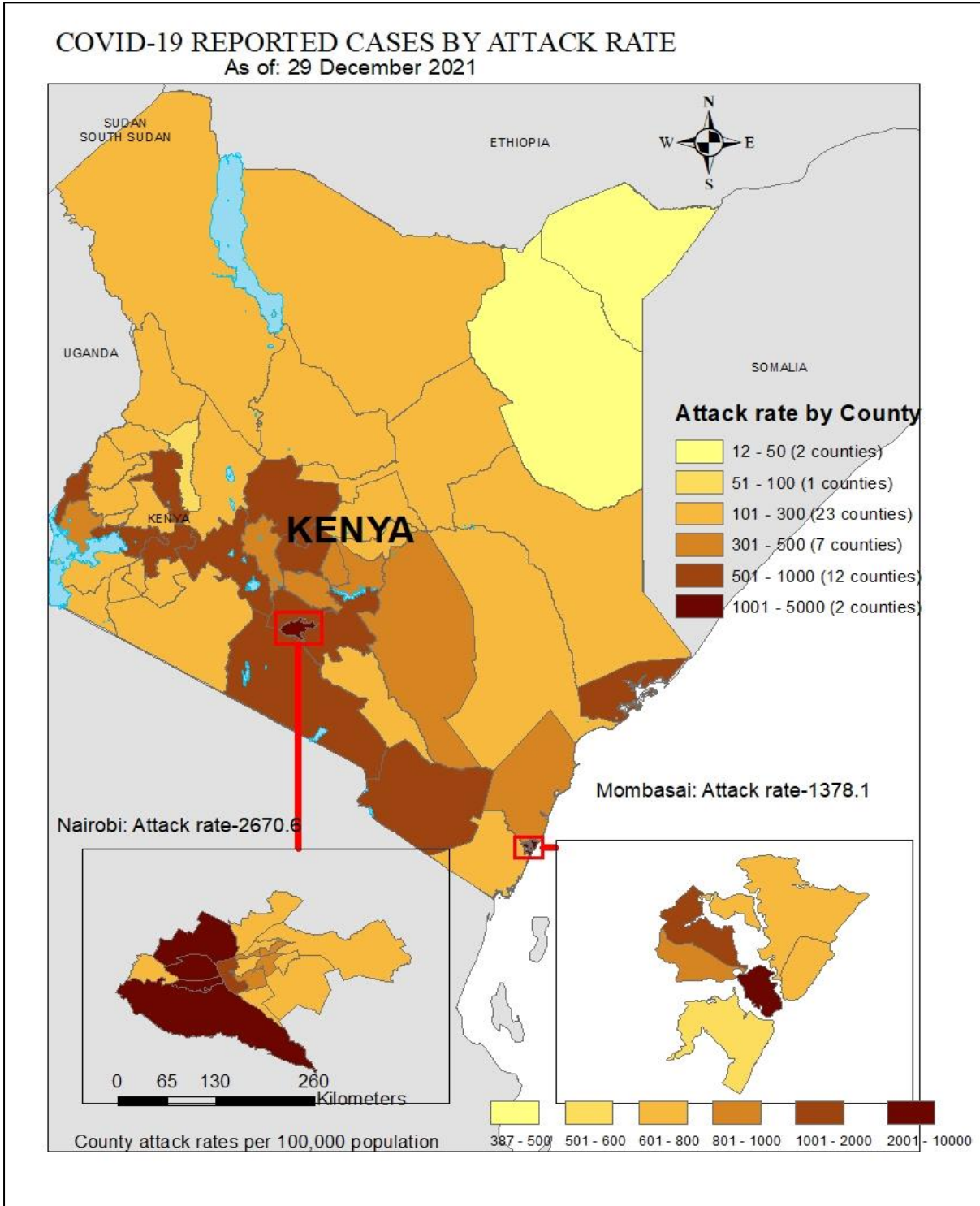


Figure 10: County Attack Rate per 100,000 Population



1.11 Map of Kenya showing COVID-19 caseload by County

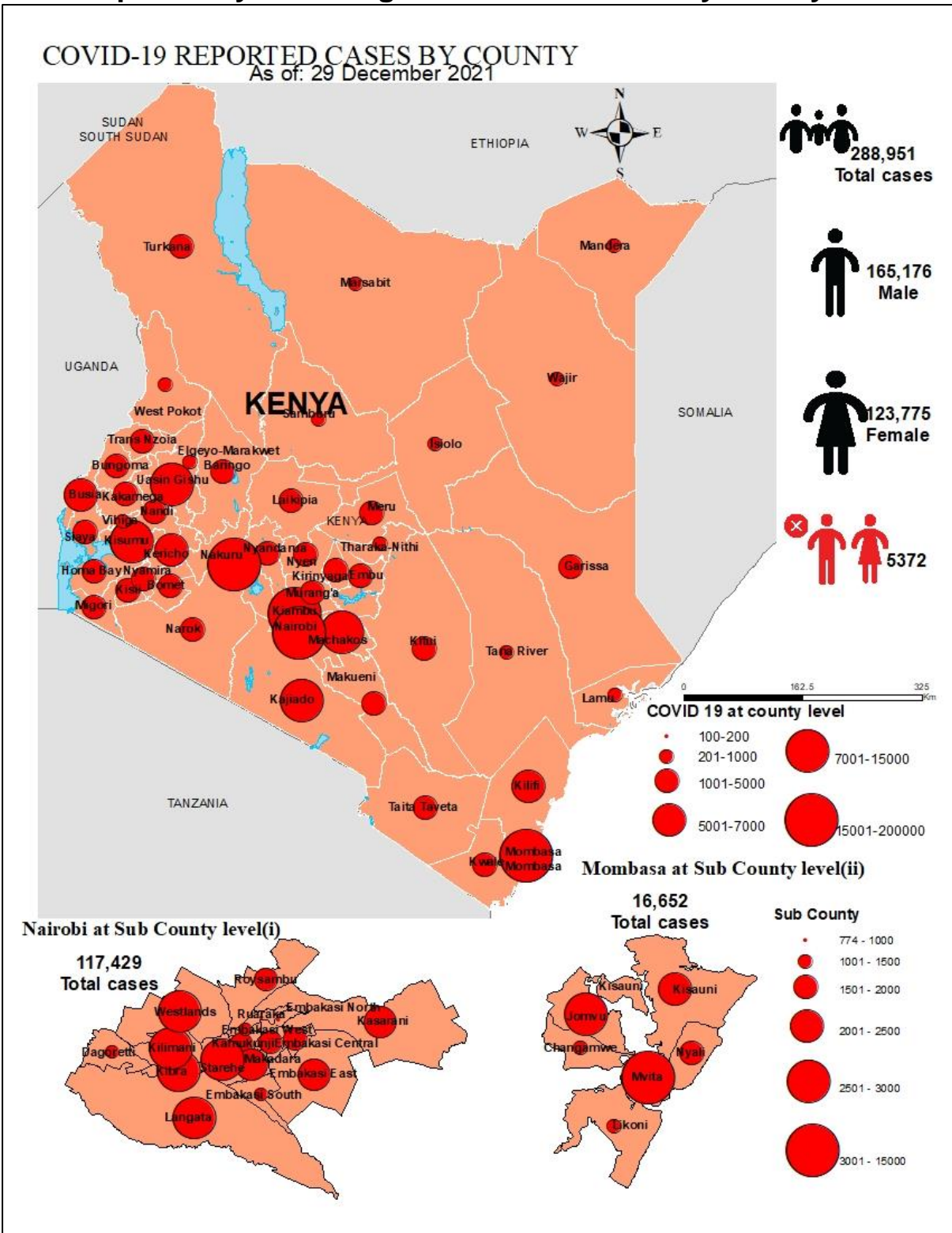


Figure 11: County Attack Rate per 100,000 Population

1.12 Kenya COVID-19 Vaccination Updates



Total Vaccinated dose1 5,704,996
Fully Vaccinated 4,018,791



Male 2,797,370 (49%)
2,050,440 (51.0%)



Female:2,920,954(51%)
1,966,734(49%)

The Kenya Ministry of Health launched the National COVID-19 vaccinations on the 5th March 2021 after receiving **1,120,000** doses of the AstraZeneca Vaccine through the COVID-19 Vaccines Global Access (COVAX) facility. As of 28th December 2021, a total of **5,704,996 persons** were vaccinated with the 1st dose and **4,018,791 persons** being fully vaccinated, targeting frontline workers, teachers, security officers, and those above 58 years of age. 51% of those vaccinated with the 1st dose were females and 49% were male. 51% of those fully vaccinated were males and 49% were female. Others (intersex/transgender) constituted 2,367 in the 1st dose and 1,617 were fully vaccinated. (Figure 12).

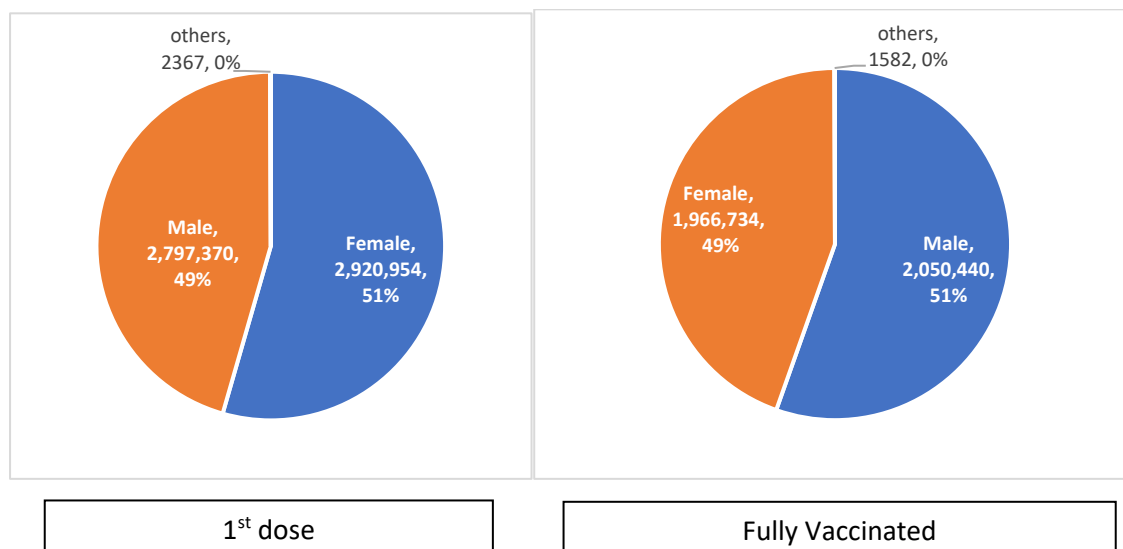


Figure 12: Sex Distribution of persons Vaccinated

The highest proportion of population fully vaccinated was in Nairobi County at 33.1% and the least was in Tana River County (3.5%) (Table 2).

Table 2: Distribution of 2nd doses and proportion of fully Vaccinated by County

County	Vaccinations dose 2	Target population above 18 years	Proportion of fully vaccinated population	County	Vaccinations dose 2	Target population above 18 years	Proportion of fully vaccinated population
Nairobi	1,010,958	3,052,494	33.10%	Nyamira	35,686	341,397	10.50%
Nyeri	155,397	510,028	30.50%	Meru	95,677	949,186	10.10%
Laikipia	73,352	306,448	23.90%	Siaya	53,453	536,031	10.00%
Kiambu	354,735	1,623,545	21.80%	Baringo	31,219	338,937	9.20%
Taita Taveta	38,134	213,335	17.90%	Nandi	41,824	492,652	8.50%
Muranga	117,697	675,364	17.40%	Busia	37,243	465,190	8.00%
Kakamega	171,150	982,838	17.40%	Samburu	11,199	145,608	7.70%
Uasin Gishu	118,780	693,570	17.10%	Kwale	33,224	451,261	7.40%
Machakos	150,127	905,172	16.60%	Migori	40,269	557,657	7.20%
Kirinyaga	67,561	413,708	16.30%	Kitui	42,753	624,506	6.80%
Nyandarua	59,993	376,776	15.90%	Isiolo	8,860	133,358	6.60%
Nakuru	197,393	1,273,265	15.50%	Kisii	46,315	697,445	6.60%
Mombasa	122,455	804,202	15.20%	Homa Bay	38,110	608,326	6.30%
Kisumu	99,401	656,147	15.10%	Marsabit	11,694	219,170	5.30%
Kajiado	99,400	663,201	15.00%	Kilifi	41,722	784,567	5.30%
Embu	58,106	395,980	14.70%	Bomet	23,730	465,963	5.10%
Bungoma	113,150	843,735	13.40%	Garissa	20,307	399,358	5.10%
Vihiga	42,787	329,317	13.00%	Narok	27,568	548,229	5.00%
Trans Nzoia	65,640	518,077	12.70%	Mandera	16,684	341,857	4.90%
Lamu	10,077	83,433	12.10%	West Pokot	13,545	283,727	4.80%
Kericho	61,081	508,980	12.00%	Wajir	14,798	337,296	4.40%
Tharaka Nithi	28,629	246,699	11.60%	Turkana	20,171	468,878	4.30%
Elgeyo Marakwet	27,905	243,690	11.50%	Tana River	5,307	151,051	3.50%
Makueni	63,525	584,379	10.90%	Total	4,018,791	27,246,033	14.80%

The proportion of health care workers who were fully vaccinated as of 28th December 2021 was highest at 81.8% as shown below.

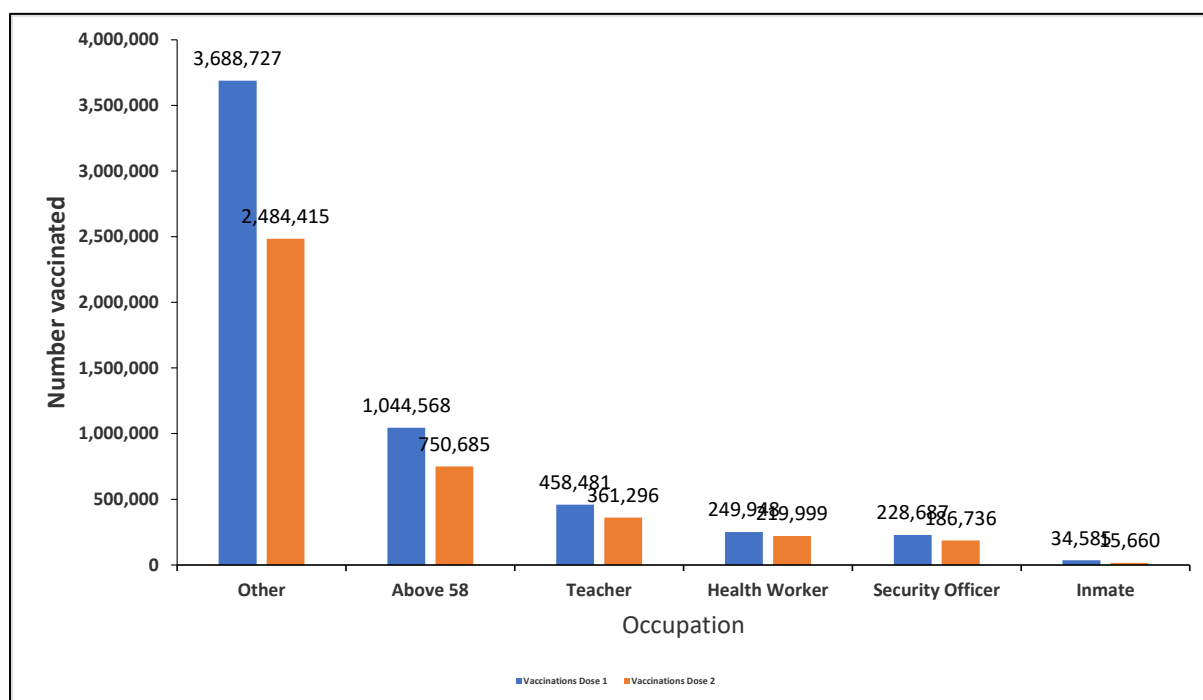


Figure 13: Distribution of persons Vaccinated with 1st and 2nd dose by Occupation

Table 3: Distribution of fully vaccinated persons by priority group

Priority group	Johnson and Johnson	Dose 2 uptake	Fully vaccinated (Dose 2 uptake+Johnson & Johnson)	Dose 1 uptake	% Fully vaccinated
Health Workers	15,538	204,461	219,999	249,948	81.80%
Security Officers	19,047	167,689	186,736	228,687	73.30%
Teachers	27,644	333,652	361,296	458,481	72.80%
Above 58 years old	116,697	633,988	750,685	1,044,568	60.70%
Others	656,835	1,827,580	2,484,415	3,688,727	49.50%
Inmates	2,928	12,732	15,660	34,585	36.80%
Total	838,689	3,180,102	4,018,791	5,704,996	55.70%

Fourteen (14.8) percent of the phase 1 targets have so far been fully vaccinated with 105.6% of the health care workers Vaccinated for dose 2 (Table 4).

Table 4: Progress towards meeting targets: Kenya, 28th December 2021

Occupation	Fully Vaccinated	Target	% Fully Vaccinated
Health Workers	219,999	208,418	105.6%
Security Officers	186,736		
Teachers	361,296	330,671	109.3%
Above 58 years old	750,685	2,594,585	28.9%
Others	2,484,415		
Inmates	15,660	49,000	32.0%
Total	4,018,791	27,246,033	14.8%

Vaccine LOGISTICS 28th December 2021

Table 5: Current Vaccines Stocks Status

Location	Quantities (Doses)
National (CVS Kitengela)	8,638,610
Total distributed to 9 regional depots	13,339,770
Total	23,279,820 Inclusive: AstraZeneca (GOK- 1,020,000, India-100,000, MOH South Sudan- 72,000, Denmark-2,769,100, UK-817,040, Greece-180,000, Canada, US-459,300, Latvia-55,200, Poland-211,200, Slovakia- 160,000, COVAX France- 401,900, Netherlands-2,292,000, COVAX Germany-2,592,000, Argentina- 400,000) J&J (GOK-1,804,800, Germany- 4,291,200, USA- 1,176,000) Moderna (USA-1,760,780, Spain-564,480) PFIZER (USA-2,822,040) Sinopharm (China-200,000).

Table 6: Vaccine Doses Dispensed as of 28th December 2021

Vaccine	Total doses Administered
Total 1st doses (All vaccines)	5,704,996
Fully vaccinated	4,018,791
Total doses (All Vaccines + Sputnik)	9,723,787
First Dose 15-18 years (Pfizer)	15,695
% of adults fully vaccinated	14.8%

2.0 KEY ACTIONS

2.1 Coordination

- Response efforts continue to be coordinated through a whole government and multi-agency approach following Executive Order No. 2 of 2021 issued by His Excellency the President on 26th March 2021.
- The National Emergency Response Committee that was constituted following the executive order meets regularly to provide policy directions on response efforts towards the COVID-19 outbreak.
- The Public Health Emergency Operations Centre is fully activated and continues to coordinate response measures as well as provide daily situation reports informing planning.

2.2 Case Management and Infection Prevention & Control

- In the last 24 hours, 236 COVID-19 patients (Health Facility: 63, HBIC: 173) recovered and were discharged bringing the total number of recoveries and discharges for COVID- 250,963 (Facility: 48,888, HBIC: 202,075).
- Currently, there are 39 COVID-19 cases admitted in the intensive care unit; 20 on supplemental oxygen; 19 on ventilatory support, and none is under observation.
- The total number of health workers infected is **10934 (336 new cases)** with 53 mortalities (**no new death**) reported in all 47 counties.

2.3 Surveillance and laboratory and Point of Entry

- All alerts were responded to and contact tracing continued in all affected counties.
- The Diagnostic capacity in the Country has been scaled up. A total of eighty-eight (88) public and private laboratories in thirteen (13) counties (Nairobi, Kisumu, Mombasa, Kilifi, Wajir, Kericho, Uasin Gishu, Machakos, Busia, Nakuru, Kajiado, Trans Nzoia, and Mandera) are currently conducting confirmatory tests for COVID-19.
- In the last 24 hours, 9,637 samples were tested across various laboratories of which three thousand, two hundred, and ninety-seven (3,297) samples turned positive for COVID-19. A total of 3,009,185 cumulative tests have so far been conducted.
- Mandatory screening of cargo vessel crew is ongoing at all points of entry to minimize the risk of importation of additional cases from other affected countries.
- Port Health Services at all points of entry and other stakeholders' measures have been put in place to ensure the safety of travelers and traders in line with Ministry of Health guidelines on social distancing, hand washing, sanitizing, and enhanced temperature screening, disinfection of facilities, and sensitization of staff.

3.0 KEY CHALLENGES

- Stigmatization and discrimination on COVID-19 suspects affecting willingness to seek testing and management of cases likely to lead to further spread of the disease.
- Commodity insecurity at the sub-national level of both personal protective equipment and laboratory reagents at COVID – 19 testing laboratories.
- There is a shortage of sampling kits across several counties affecting testing of suspected cases, contacts, and limiting overall access to testing.
- Inadequate resources to facilitate critical response pillars limiting response capacity in detecting, investigating, contact tracing, and follow-up of cases.

4.0 NEXT STEPS

- Strengthen enforcement of public health measures across the country as directed by the President.
- There is a need to streamline cross-country coordination to address issues around the borders especially those counties bordering neighboring countries.
- Strengthening the contact tracing in the sub-counties.
- Strengthen commodity security of personal protective equipment at the sub-national level.
- Strengthen diagnostic quality assurance system

Emergency Operation Center:

Telephone: 0729 471 414, 0732 353 535, 0800 721316(Toll Free)
COVID-19 Call center: *719# (short message only), 719 (Audio)
COVID-19 Dashboard: https://khro.health.go.ke/#/covid_19_tracker
Email: manager.eockenya@gmail.com