



COVID-19 OUTBREAK IN KENYA

DAILY SITUATION REPORT - 654

1. KEY HIGHLIGHTS

- Two thousand seven hundred and ninety-one (2791)** new confirmed COVID-19 cases were reported in the last 24 hours bringing the total number of confirmed cases in Kenya to **295028 cases** as of 31 December 2021. Two thousand five hundred and seventy-two (2572) of the cases are Kenyans of which four (4) have a travel history. Two thousand seven hundred and eighty-six (2786) of the cases are local transmissions. Two hundred and eighteen (218) of the cases are non-Kenyans. Counties reporting new cases are **Nairobi (932), Siaya (198), Kiambu (170), Nakuru (166), Mombasa (152), Migori (112), Nyamira (111), Murang'a (92), Kirinyaga (86), Kajiado (56), Kisumu (56), Uasin Gishu (48), Laikipia (47), Kilifi (44), Kakamega (43), Machakos (42), Kericho (39), Nyandarua (34), Embu (31), Nyeri (31), West Pokot (31), Busia (30), Meru (28), Garissa (23), Kwale (22), Kitui (21), Bungoma (20), Narok (19), Makueni (16), Vihiga (16), Taita Taveta (11), Bomet (9), Trans Nzoia (8), Baringo (7), Kisii (7), Turkana (7), Homa Bay (6), Marsabit (6), Lamu (5), Isiolo (2), Nandi (2), Tana River (2) and Tharaka Nithi (2).**
- Two (2) deaths have been reported over the last 24 hrs.** The total number of deaths reported since the beginning of the outbreak is **5378, case fatality rate (CFR) is 1.8%**
- As of today, **forty-seven (47) counties** have reported cases namely: Nairobi (119538), Kiambu (19225), Mombasa (16991), Nakuru (15708), Uasin Gishu (9608), Kisumu (7368), Machakos (7315), Kajiado (7270), Kilifi (6461), Busia (6346), Kericho (5331), Nyeri (5111), Siaya (5001), Murang'a (4096), Kitui (3898), Meru (3878), Kakamega (3586), Kisii (3188), Migori (2920), Bungoma (2879), Laikipia (2808), Makueni (2783), Nyandarua (2763), Garissa (2481), Embu (2379), Turkana (2338), Nandi (2224), Trans Nzoia (2212), Kirinyaga (2089), Homa Bay (1875), Taita Taveta (1762), Nyamira (1502), Baringo (1486), Bomet (1347), Narok (1280), Kwale (1136), Tharaka Nithi (1051), Marsabit (877), Vihiga (870), West Pokot (742), Lamu (731), Isiolo (727), Elgeyo Marakwet (448), Mandera (408), Tana River (385), Samburu (311), and Wajir (295).
- Nairobi city** and **Mombasa** Counties have the highest attack rates of COVID-19 at **2718.6** and **1406.2** per **100,000** population respectively when compared to **620.3/100,000** for the whole country and need enhanced interventions. In addition, the COVID-19 outbreak has so far spread to **100%** of the counties in the country. **Risk communication, laboratory testing, and contact tracing** have been identified as the key challenges
- Two hundred and seventy-nine thousand nine hundred and seventy-eight - 279978 (95%) of the 295028 confirmed cases** are local transmissions.
- In the last 24 hours, 9,384 samples were tested across various laboratories of which two thousand, seven hundred, and ninety-one (2,791) samples turned positive for COVID-19. A total of 3,030,272 cumulative tests have so far been conducted.**
- In the last 24 hours, 1,058 COVID-19 patients (Health Facility: 99, HBIC: 959) recovered and were discharged bringing the total number of recoveries and discharges for COVID- 252,281 (Facility: 49,095, HBIC: 203,186).**



Total Cases
=295,028

Male = 168,171
Female = 126,857

Deaths
=5378

1.1 Epidemiology

Since 13 March 2020 when the first case was confirmed in Kenya, a total of **295,028** confirmed cases and **5378** deaths giving a case fatality rate of **1.8%** have been line-listed. Of these, 279978 cases (95%) were local transmissions and 15049 (5%) are imported cases. Figure 1 below shows the trends of cases.

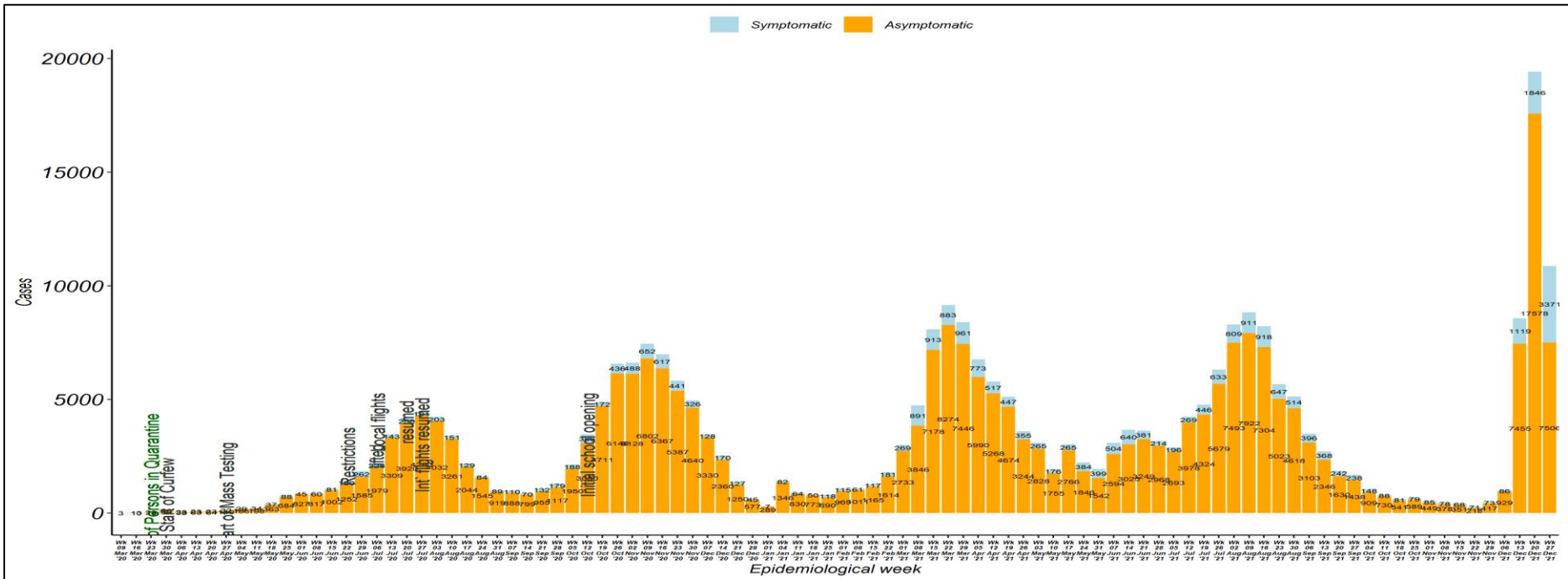


Figure 1: Trends of COVID-19 Outbreak Kenya



1.2 The trends of COVID-19 deaths

A total of **5378** cases died since the beginning of the outbreak giving a case fatality rate of **1.8%**. Figure 2 shows the trend of COVID-19 deaths by week.

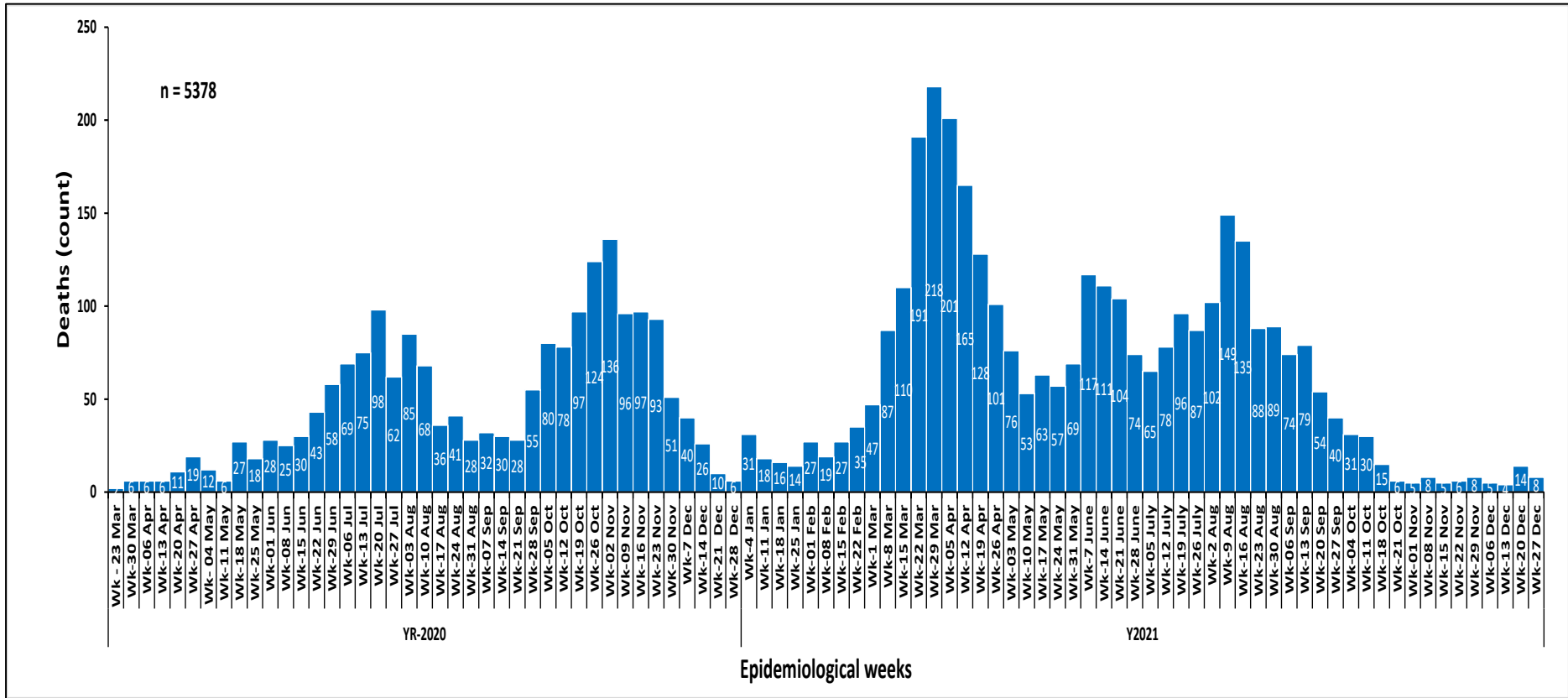


Figure 2: Fatalities by week



1.3 National caseload vs Nairobi County caseload

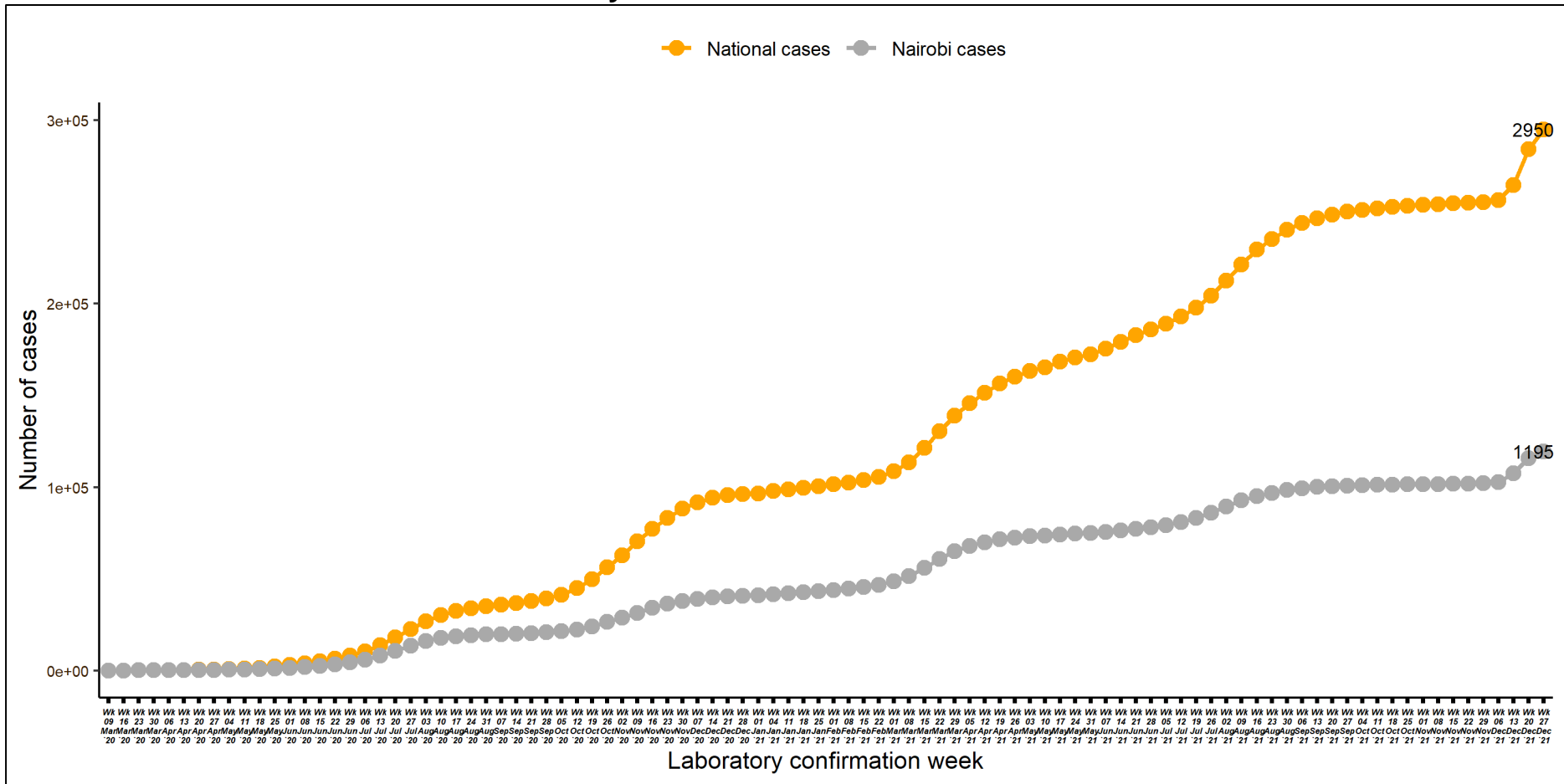


Figure 3: Cumulative cases by week of confirmation. Comparing National cases and Nairobi County cases



1.4 Laboratory testing

WHO recommends that one of the indicators that the pandemic is under control, is when < 5% of samples tested are positive for COVID-19 for the past 2 weeks, assuming that surveillance for suspected cases is comprehensive and testing rate of suspect cases, is optimum at least 1/1000 population/week. The laboratory test rate currently stands at **63,709** samples per 1,000,000 people. Figure 4 shows the weekly testing rate/1000 population/week.

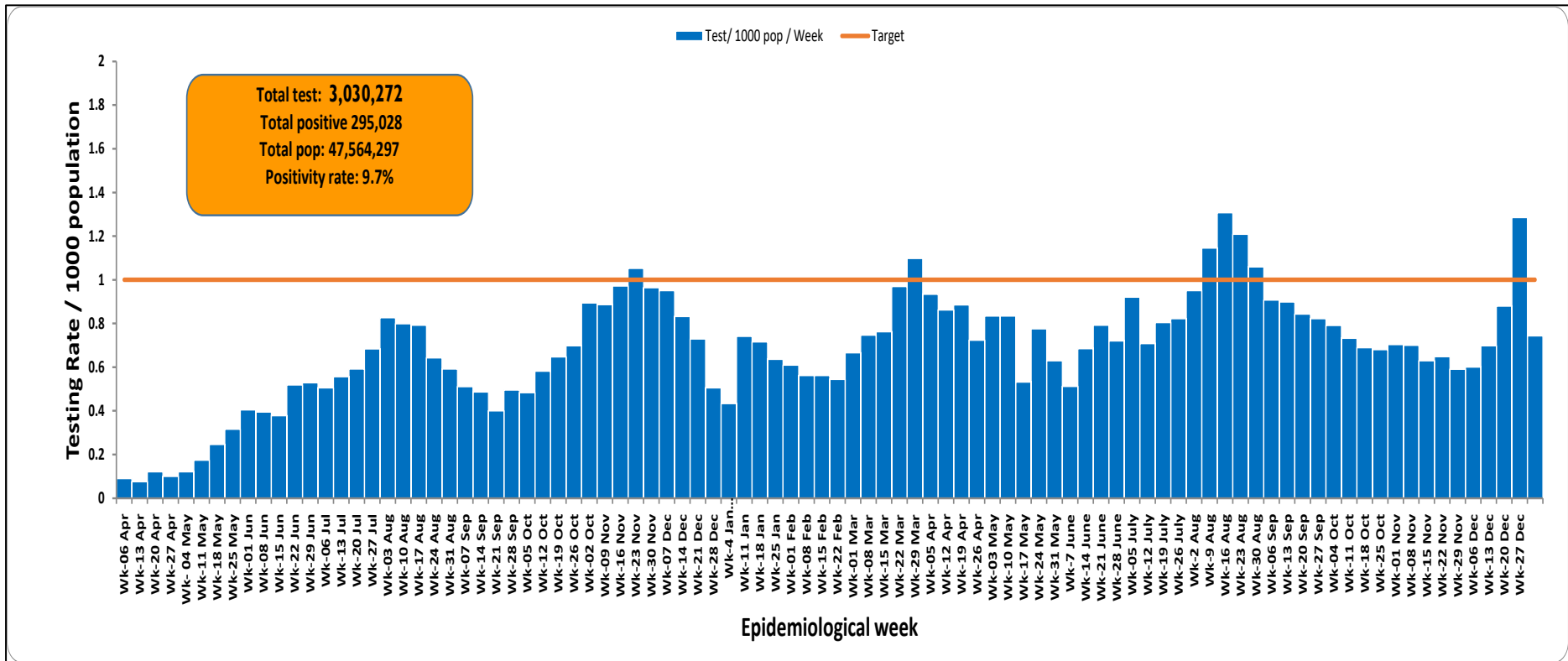


Figure 4: Laboratory Tests Conducted by Date Results were Shared



1.5 Distribution of Confirmed COVID-19 Cases by Presentation and Presentation of Symptoms among Symptomatic cases

Of the 295028 confirmed cases, 30437(10%) presented with symptoms (Figure 5). Cough (52%) and Fever (33%) were predominant presenting symptoms.

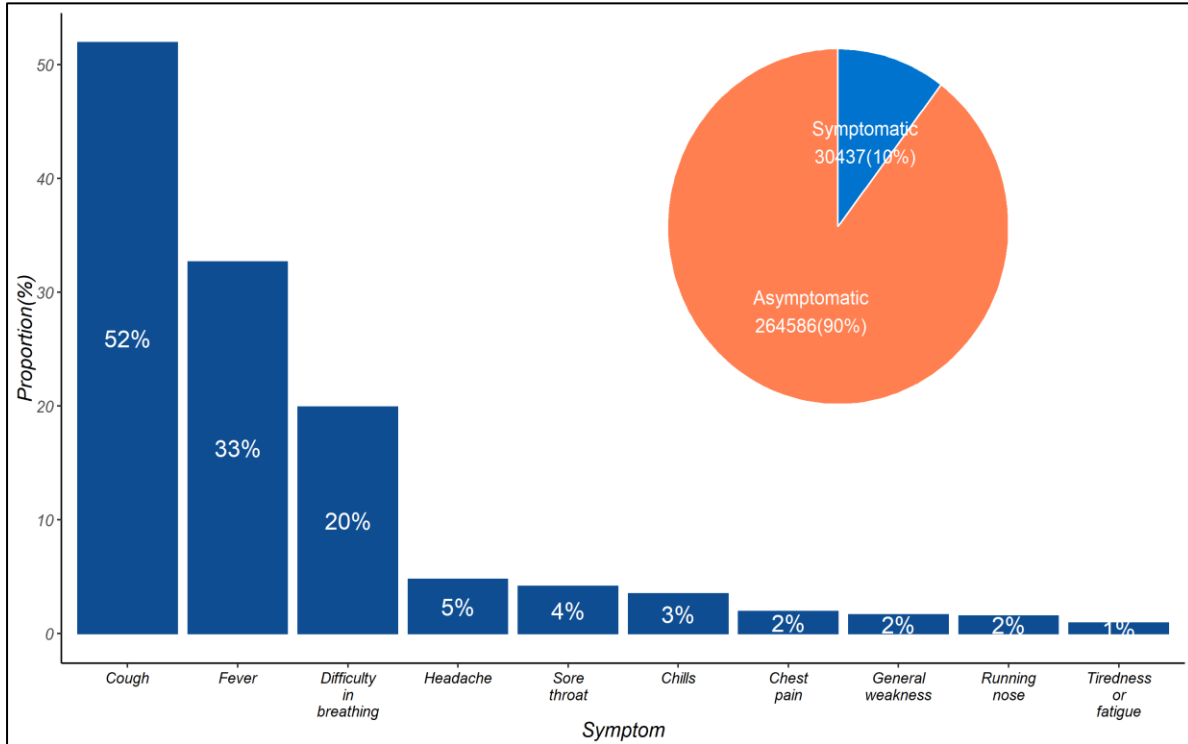


Figure 5: Distribution of Presenting Symptoms among Symptomatic COVID-19 Cases



1.6 Age and Sex Distribution of COVID Confirmed Cases and Deaths

One hundred and sixty-eight thousand one hundred and seventy-one (57%) are males and 126857 (43%) are females. Most of the cases; 77503 (26%), are in the age group of 30-39 years. Figure 6 below shows age and sex distribution of COVID-19 cases.

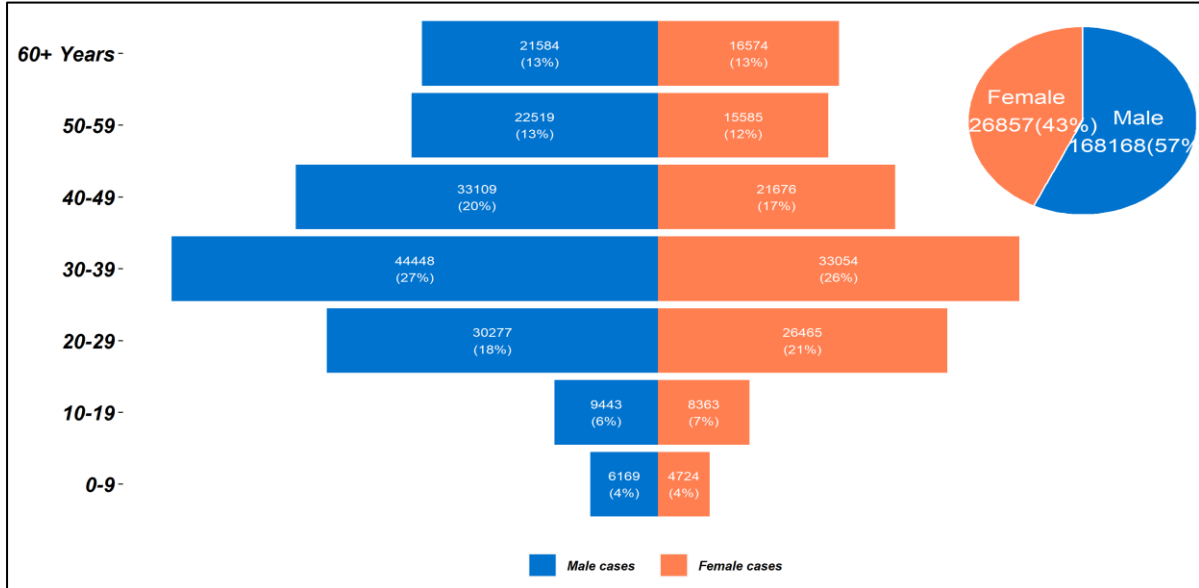


Figure 6: Age and Sex Distribution of COVID-19 Cases Kenya

A total of 5378 deaths have been reported so far, 3445 (64%) being males and 1933 (36%) were females (Figure 7).

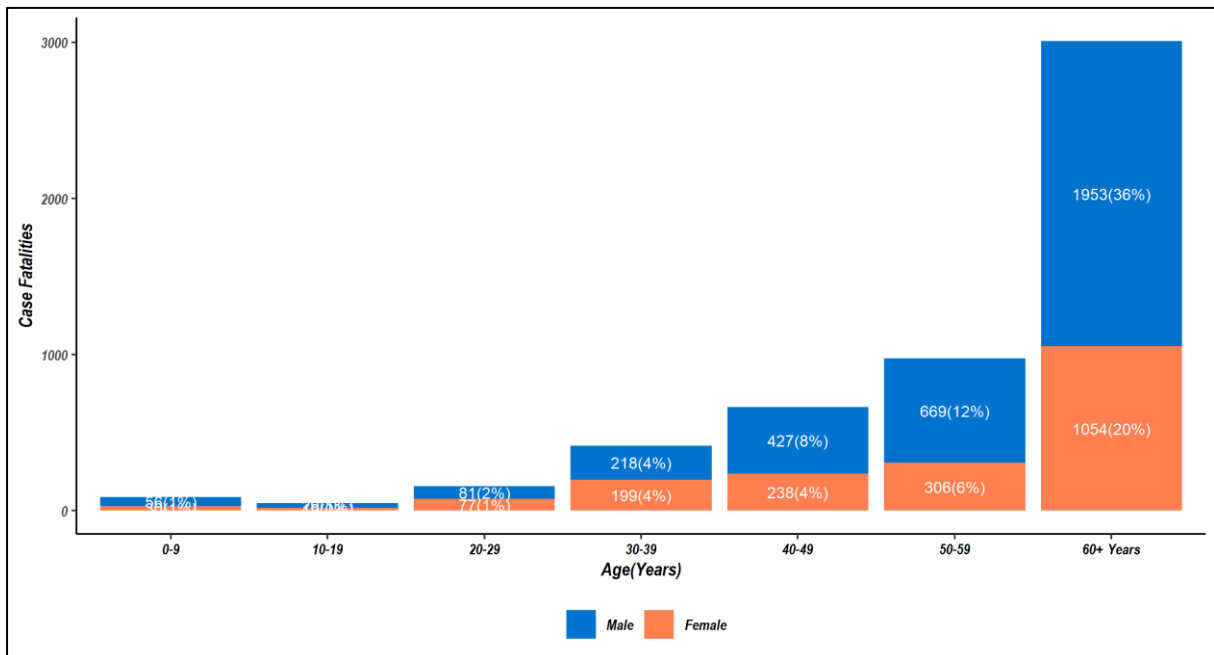


Figure 7: Distribution of Case Fatalities by Age and Sex



1.7 Trends of health care workers

Among the cases who had their occupation filled in, a cumulative of 11460 health professionals (225 new cases) and 53 mortalities (No new deaths) have been reported in all the 47 counties.

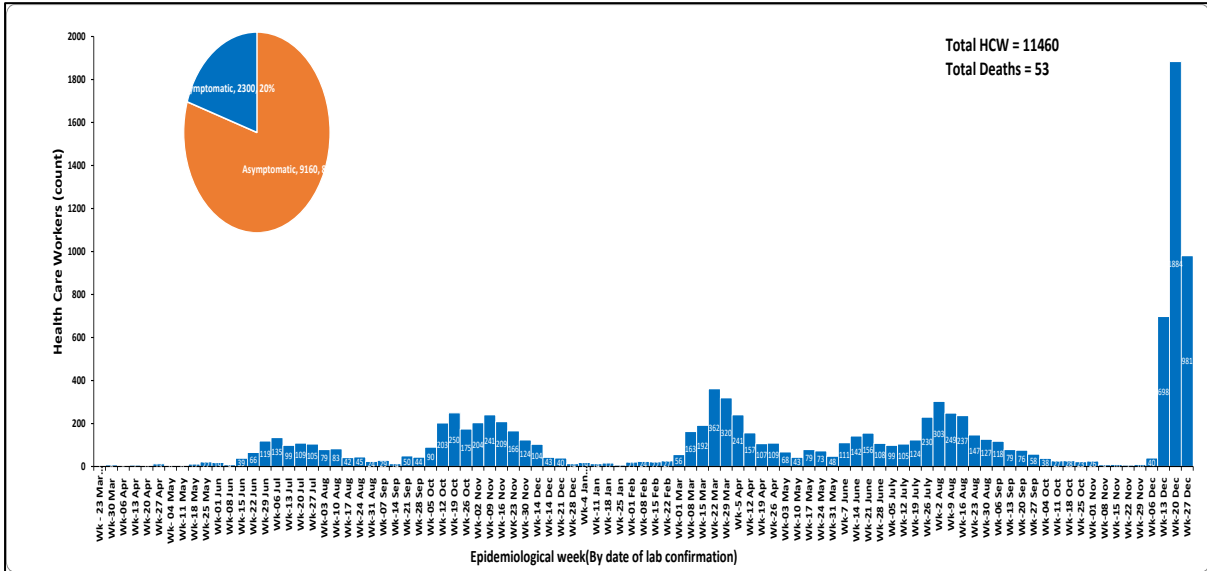


Figure 8: Covid-19 cases among health care workers

1.8 Figure 9 shows cases among health care workers by county

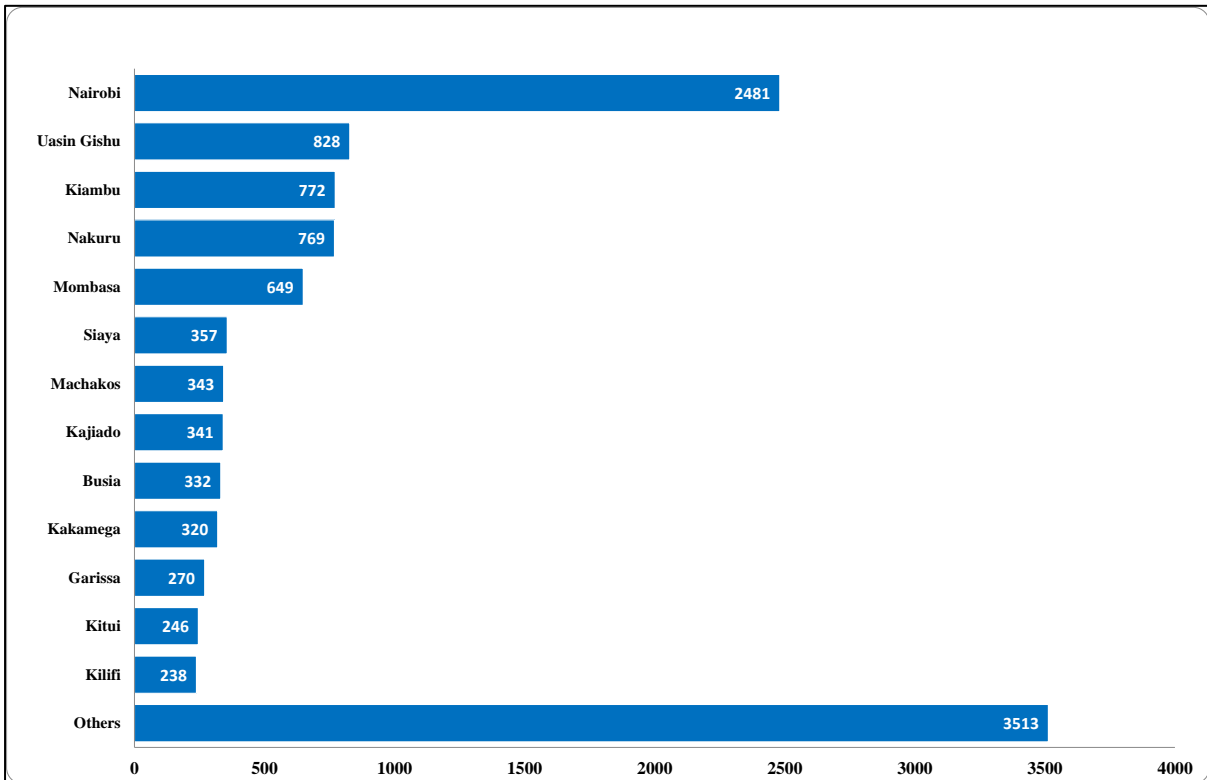


Figure 9: Health care workers cases by counties

Other counties reporting health care workers cases include – Nyeri (236), Kisumu(226), Turkana (190), Meru (190), Migori (186), Makueni(184), Kisii (173), Bungoma(163), Nyandarua (156), Taita Taveta(155), Murang'a(151), Homa Bay(141), Laikipia (136), Nandi(124), West Pokot(122), Tharaka Nithi(120), Kirinyaga(114), Kericho(92), Narok(88), Lamu(72), Embu(64), Isiolo(61), Marsabit (56), Baringo(39), Tana River (35), Bomet(35), Vihiga (35), Elgeyo Marakwet(31), Wajir(30), Kwale (25), Mandera(25), Trans Nzoia(23), Samburu (19), Nyamira (15).

1.9 Distribution of Confirmed COVID-19 Cases by County and Transmission Classification

Of the **295028** cases, 119538 (41%) are from Nairobi County followed by Kiambu County with 19225 (7%) as shown in Table 1.

Table 1: Distribution of confirmed COVID-19 Cases by County and transmission classification

County	Imported	Local
Nairobi	580	113824
Kiambu	37	18321
Mombasa	451	16033
Nakuru	39	14760
Uasin Gishu	31	9043
Machakos	12	7003
Kajiado	50	6945
Kisumu	17	6941
Kilifi	20	6152
Busia	177	6065
Kericho	2	5023
Nyeri	2	4891
Siaya	3	4624
Murang'a	1	3869
Kitui	2	3751
Meru	0	3644
Kakamega	8	3339
Kisii	6	3043
Bungoma	5	2812

County	Imported	Local
Makueni	3	2672
Laikipia	2	2646
Nyandarua	2	2640
Migori	22	2597
Garissa	5	2396
Embu	0	2268
Turkana	22	2214
Trans Nzoia	1	2140
Nandi	0	2096
Kirinyaga	1	1976
Homabay	4	1794
Taita Taveta	9	1596
Baringo	1	1439
Nyamira	0	1409
Bomet	0	1293
Narok	2	1215
Kwale	16	1012
Tharaka Nithi	0	1007
Marsabit	0	836
Vihiga	2	819
Lamu	0	718
Isiolo	2	708
West Pokot	0	649
Elgeyo Marakwet	0	435
Mandera	5	374
Tana River	0	365
Samburu	0	308
Wajir	17	273



1.10 Map of Kenya showing COVID-19 attack rate by County per 100,000 population

Nairobi City County has the highest attack rate of 2718.6 per 100,000 population followed by Mombasa County at 1406.2 per 100,000 population (Figure 10).

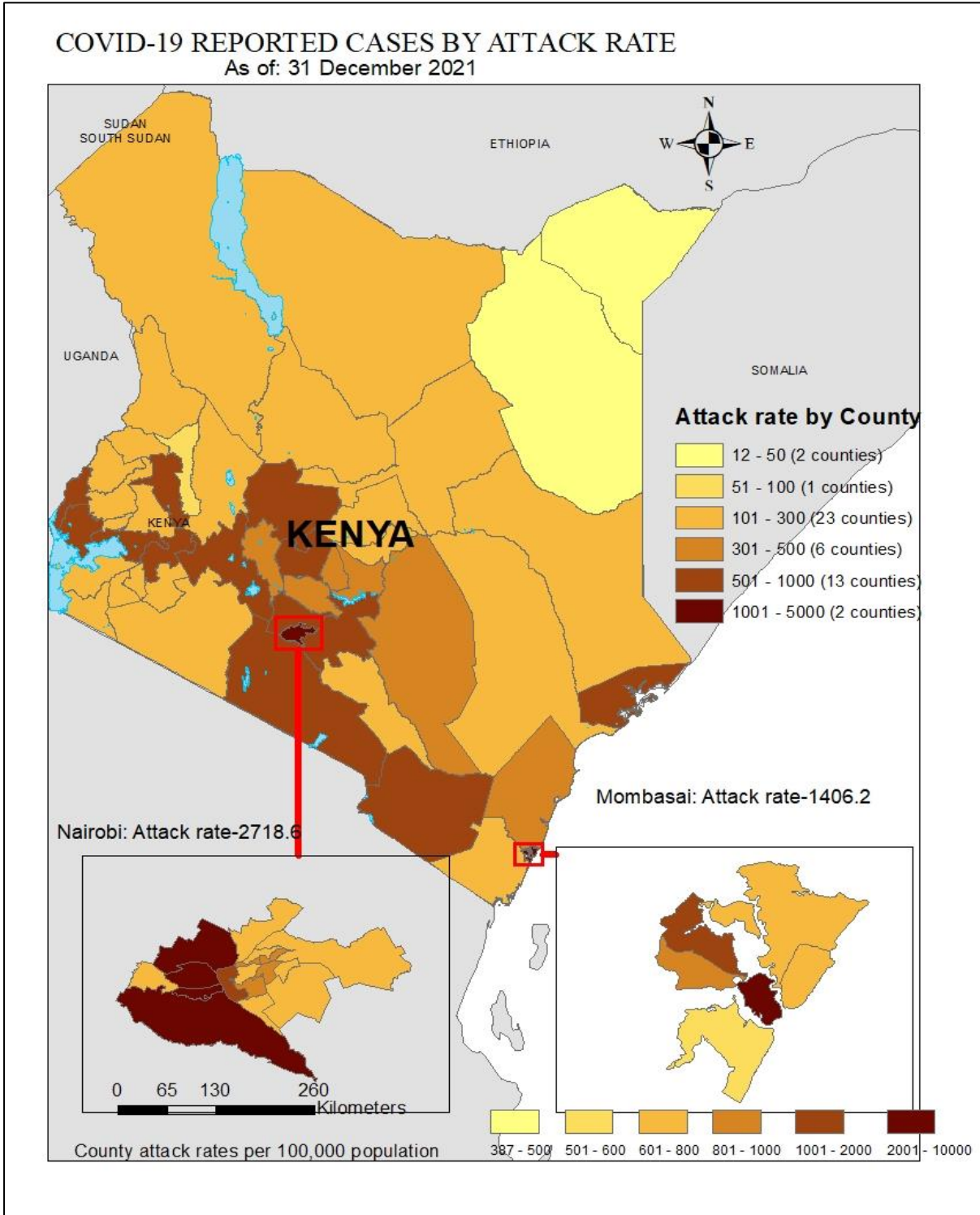


Figure 10: County Attack Rate per 100,000 Population



1.11 Map of Kenya showing COVID-19 caseload by County

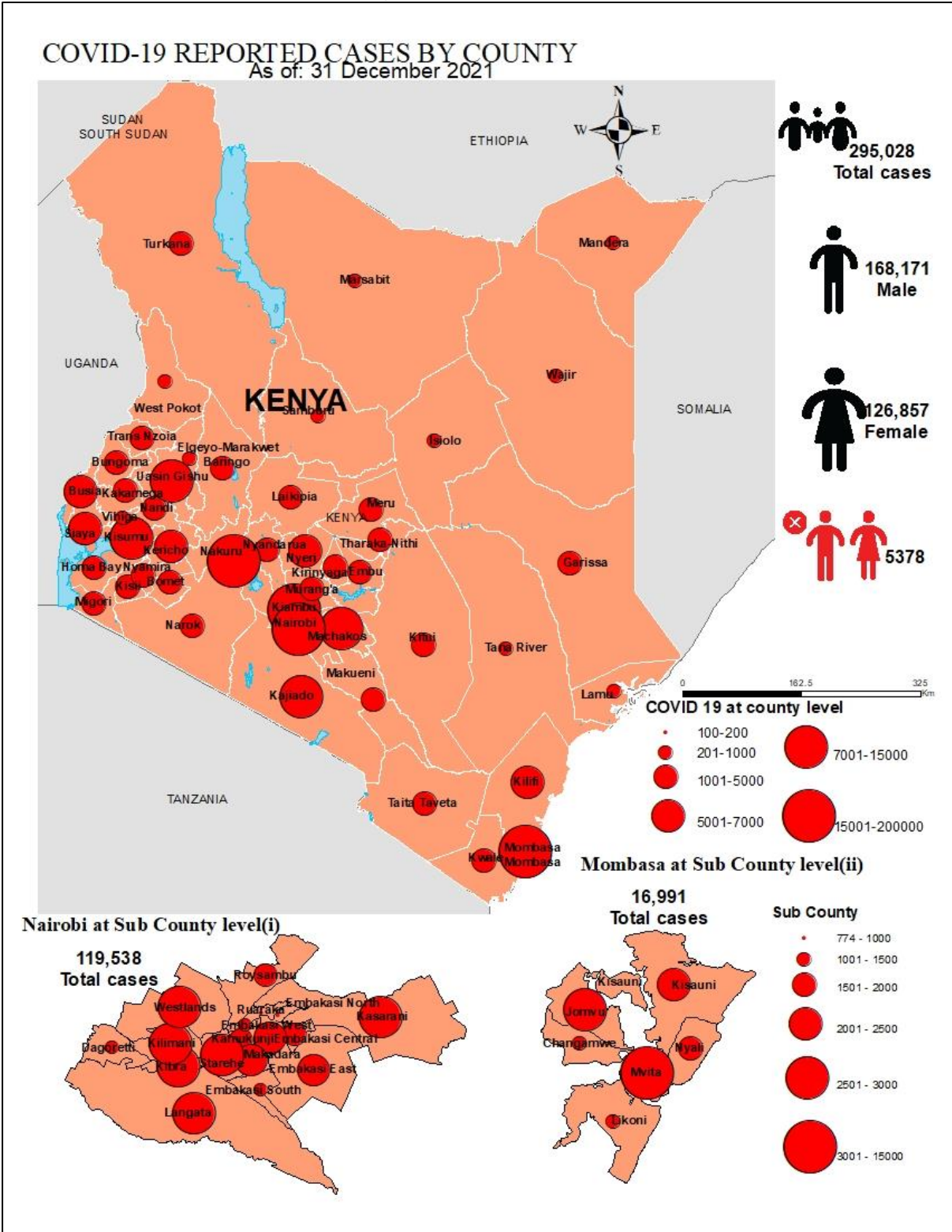


Figure 11: County Attack Rate per 100,000 Population

1.12 Kenya COVID-19 Vaccination Updates



				
Total Vaccinated dose1	5,820,951		Male 2,797,370 (49%)	Female:2,987,960(51%)
Fully Vaccinated	4,155,832		2,114,752 (51.0%)	2,038,292(49%)

The Kenya Ministry of Health launched the National COVID-19 vaccinations on the 5th March 2021 after receiving **1,120,000** doses of the AstraZeneca Vaccine through the COVID-19 Vaccines Global Access (COVAX) facility. As of 30th December 2021 a total of **5,820,951 persons** were vaccinated with the 1st dose and **4,155,832 persons** being fully vaccinated, targeting frontline workers, teachers, security officers and those above 58 years of age. 51% of those vaccinated with the 1st dose were females and 49% male. 51% of those fully vaccinated were males and 49% female. Others (intersex/transgender) constituted 2,394 in the 1st dose and 1,678 were fully vaccinated. (Figure 12).

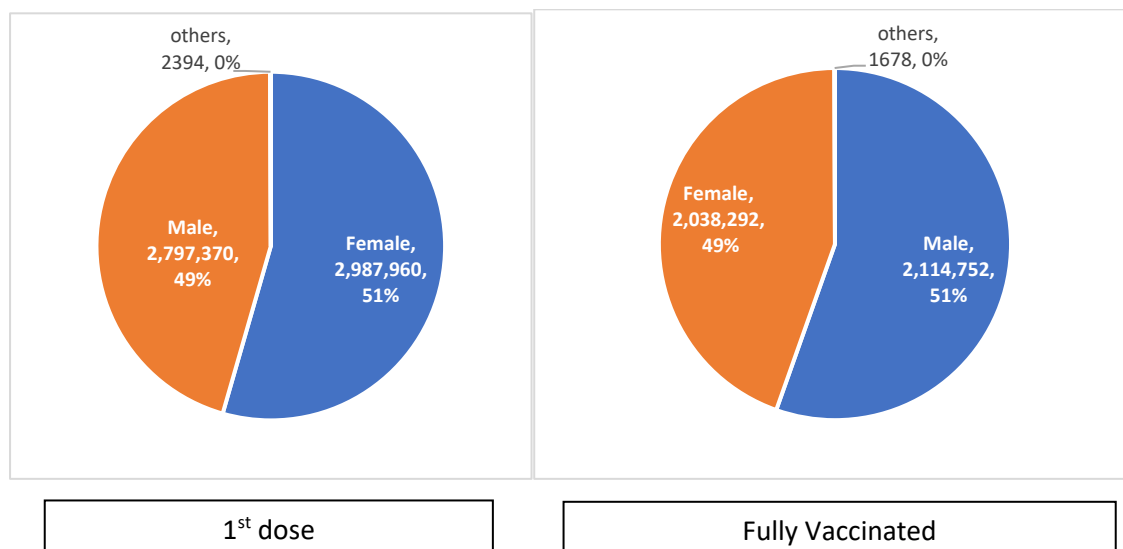


Figure 12: Sex Distribution of persons Vaccinated

The highest proportion of population fully vaccinated was in Nairobi County at 33.9% and the least was in Tana River County (3.6%) (Table 2).

Table 2: Distribution of 2nd doses and proportion of fully Vaccinated by County

County	Vaccinations dose 2	Target population above 18 years	Proportion of fully vaccinated population	County	Vaccinations dose 2	Target population above 18 years	Proportion of fully vaccinated population
Nairobi	1,035,199	3,052,494	33.90%	Makueni	64,383	584,379	11.00%
Nyeri	159,277	510,028	31.20%	Meru	101,101	949,186	10.70%
Laikipia	75,715	306,448	24.70%	Siaya	56,803	536,031	10.60%
Kiambu	362,496	1,623,545	22.30%	Baringo	32,874	338,937	9.70%
Kakamega	183,276	982,838	18.60%	Nandi	42,924	492,652	8.70%
Taita Taveta	39,183	213,335	18.40%	Samburu	12,137	145,608	8.30%
Muranga	120,572	675,364	17.90%	Busia	38,622	465,190	8.30%
Uasin Gishu	122,031	693,570	17.60%	Kwale	34,390	451,261	7.60%
Machakos	153,774	905,172	17.00%	Migori	42,240	557,657	7.60%
Kirinyaga	69,759	413,708	16.90%	Kisii	51,100	697,445	7.30%
Nyandarua	62,701	376,776	16.60%	Kitui	44,064	624,506	7.10%
Nakuru	205,061	1,273,265	16.10%	Isiolo	9,282	133,358	7.00%
Mombasa	126,602	804,202	15.70%	Homa Bay	40,068	608,326	6.60%
Kisumu	102,375	656,147	15.60%	Marsabit	12,110	219,170	5.50%
Kajiado	101,867	663,201	15.40%	Kilifi	43,296	784,567	5.50%
Embu	60,406	395,980	15.30%	Bomet	24,515	465,963	5.30%
Bungoma	118,482	843,735	14.00%	Garissa	20,950	399,358	5.20%
Vihiga	45,134	329,317	13.70%	Mandera	17,902	341,857	5.20%
Trans Nzoia	68,665	518,077	13.30%	Narok	28,340	548,229	5.20%
Lamu	10,620	83,433	12.70%	West Pokot	14,665	283,727	5.20%
Kericho	62,587	508,980	12.30%	Wajir	15,358	337,296	4.60%
Tharaka Nithi	29,936	246,699	12.10%	Turkana	20,668	468,878	4.40%
Elgeyo Marakwet	28,598	243,690	11.70%	Tana River	5,437	151,051	3.60%
Nyamira	38,287	341,397	11.20%	Total	4,155,832	27,246,033	15.30%

The proportion of health care workers who were fully vaccinated as of 30th December 2021 was highest at 82.1% as shown below.

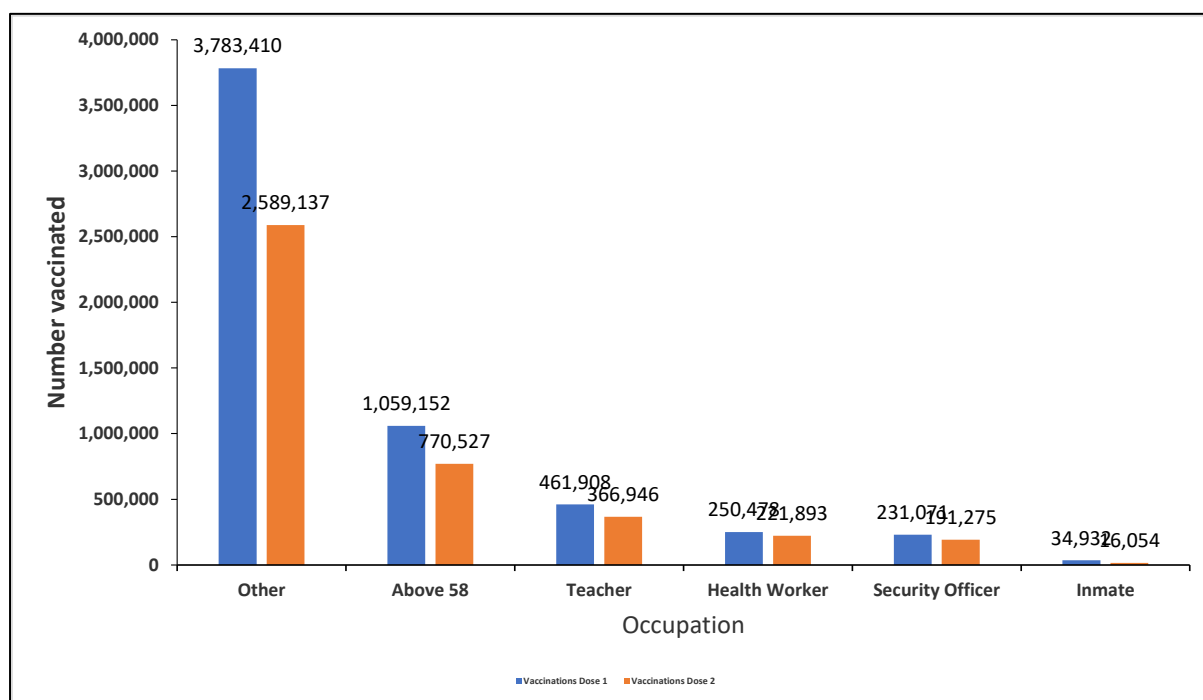


Figure 13: Distribution of persons Vaccinated with 1st and 2nd dose by Occupation

Table 3: Distribution of fully vaccinated persons by priority group

Priority group	Johnson and Johnson	Dose 2 uptake	Fully vaccinated (Dose 2 uptake+Johnson & Johnson)	Dose 1 uptake	% Fully vaccinated
Health Workers	16,196	205,697	221,893	250,478	82.10%
Security Officers	21,407	169,868	191,275	231,071	73.50%
Teachers	30,149	336,797	366,946	461,908	72.90%
Above 58 years old	125,919	644,608	770,527	1,059,152	60.90%
Others	710,884	1,878,253	2,589,137	3,783,410	49.60%
Inmates	3,128	12,926	16,054	34,932	37.00%
Total	907,683	3,248,149	4,155,832	5,820,951	55.80%

Fifteen (15.3) percent of the phase 1 Target have so far been fully vaccinated with 106.5% of the health care workers Vaccinated for dose 2 (Table 4).

Table 4: Progress towards meeting targets: Kenya, 30th December 2021

Occupation	Fully Vaccinated	Target	% Fully Vaccinated
Health Workers	221,893	208,418	106.5%
Security Officers	191,275		
Teachers	366,946	330,671	111.0%
Above 58 years old	770,527	2,594,585	29.7%
Others	2,589,137		
Inmates	16,054	49,000	32.8%
Total	4,155,832	27,246,033	15.3%

Vaccine LOGISTICS 30th December 2021

Table 5: Current Vaccines Stocks Status

Location	Quantities (Doses)
National (CVS Kitengela)	8,638,610
Total distributed to 9 regional depots	13,339,770
Total	23,279,820 Inclusive: AstraZeneca (GOK- 1,020,000, India-100,000, MOH South Sudan- 72,000, Denmark-2,769,100, UK-817,040, Greece-180,000, Canada, US-459,300, Latvia-55,200, Poland-211,200, Slovakia- 160,000, COVAX France- 401,900, Netherlands-2,292,000, COVAX Germany- 2,592,000, Argentina- 400,000) J&J (GOK-1,804,800, Germany-4,291,200, USA- 1,176,000) Moderna (USA-1,760,780, Spain-564,480) PFIZER (USA-2,822,040) Sinopharm (China-200,000).

Table 6: Vaccine Doses Dispensed as of 30th December 2021

Vaccine	Total doses Administered
Total 1st doses (All vaccines)	5,820,951
Fully vaccinated	4,155,832
Total doses (All Vaccines + Sputnik)	9,976,783
First Dose 15-18 years (Pfizer)	18,319
% of adults fully vaccinated	14.3%

2.0 KEY ACTIONS

2.1 Coordination

- Response efforts continue to be coordinated through a whole government and multi-agency approach following Executive Order No. 2 of 2021 issued by His Excellency the President on 26th March 2021.
- The National Emergency Response Committee that was constituted following the executive order meets regularly to provide policy directions on response efforts towards the COVID-19 outbreak.
- The Public Health Emergency Operations Centre is fully activated and continues to coordinate response measures as well as provide daily situation reports informing planning.

2.2 Case Management and Infection Prevention & Control

- In the last 24 hours, 1,058 COVID-19 patients (Health Facility: 99, HBIC: 959) recovered and were discharged bringing the total number of recoveries and discharges for COVID- 252,281 (Facility: 49,095, HBIC: 203,186).
- Currently, there are 38 COVID-19 cases admitted in the intensive care unit; 21 on supplemental oxygen; 17 on ventilatory support, and none is under observation.
- The total number of health workers infected is **11460 (225 new cases)** with 53 mortalities (**no new death**) reported in all 47 counties.

2.3 Surveillance and laboratory and Point of Entry

- All alerts were responded to and contact tracing continued in all affected counties.
- The Diagnostic capacity in the Country has been scaled up. A total of eighty-eight (88) public and private laboratories in thirteen (13) counties (Nairobi, Kisumu, Mombasa, Kilifi, Wajir, Kericho, Uasin Gishu, Machakos, Busia, Nakuru, Kajiado, Trans Nzoia, and Mandera) are currently conducting confirmatory tests for COVID-19.
- In the last 24 hours, 9,384 samples were tested across various laboratories of which two thousand, seven hundred, and ninety-one (2,791) samples turned positive for COVID-19. A total of 3,030,272 cumulative tests have so far been conducted.
- Mandatory screening of cargo vessel crew is ongoing at all points of entry to minimize the risk of importation of additional cases from other affected countries.
- Port Health Services at all points of entry and other stakeholders' measures have been put in place to ensure the safety of travelers and traders in line with Ministry of Health guidelines on social distancing, hand washing, sanitizing, and enhanced temperature screening, disinfection of facilities, and sensitization of staff.

3.0 KEY CHALLENGES

- Stigmatization and discrimination on COVID-19 suspects affecting willingness to seek testing and management of cases likely to lead to further spread of the disease.
- Commodity insecurity at the sub-national level of both personal protective equipment and laboratory reagents at COVID – 19 testing laboratories.
- There is a shortage of sampling kits across several counties affecting testing of suspected cases, contacts, and limiting overall access to testing.
- Inadequate resources to facilitate critical response pillars limiting response capacity in detecting, investigating, contact tracing, and follow-up of cases.

4.0 NEXT STEPS

- Strengthen enforcement of public health measures across the country as directed by the President.
- There is a need to streamline cross-country coordination to address issues around the borders especially those counties bordering neighboring countries.
- Strengthening the contact tracing in the sub-counties.
- Strengthen commodity security of personal protective equipment at the sub-national level.
- Strengthen diagnostic quality assurance system

Emergency Operation Center:

Telephone: 0729 471 414, 0732 353 535, 0800 721316(Toll Free)
COVID-19 Call center: *719# (short message only), 719 (Audio)
COVID-19 Dashboard: https://khro.health.go.ke/#/covid_19_tracker
Email: manager.eockenya@gmail.com