



# COVID-19 OUTBREAK IN KENYA

## DAILY SITUATION REPORT - 664

### 1. KEY HIGHLIGHTS

- One thousand and thirty-three (1034)** new confirmed COVID-19 cases were reported in the last 24 hours bringing the total number of confirmed cases in Kenya to **312572 cases** as of 10 January 2022. Counties reporting new cases are **Nairobi (615), Nyeri (47), Kiambu (38), Kilifi (34), Uasin Gishu (34), Siaya (31), Kericho (29), Busia (25), Turkana (16), Laikipia (15), Kajiado (14), Kakamega (14), Embu (13), Makueni (11), Nakuru (11), Garissa (10), Meru (10), Machakos (9), Nandi (9), Kwale (6), Kisumu (5), Kitui (5), Migori (5), Murang'a (5), Elgeyo Marakwet (4), Baringo (3), Mombasa (3), Bungoma (2), Kisii (2), Nyamira (2), Trans Nzoia (2), Bomet (1), Homa Bay (1), Narok (1) and West Pokot (1).**
- Eight (8) deaths have been reported over the last 24 hrs.** The total number of deaths reported since the beginning of the outbreak is **5454, case fatality rate (CFR) is 1.7%**
- As of today, **forty-seven (47) counties** have reported cases namely: Nairobi (126730), Kiambu (19839), Mombasa (17487), Nakuru (16421), Uasin Gishu (10184), Kisumu (7608), Machakos (7547), Kajiado (7531), Kilifi (6814), Busia (6445), Siaya (5970), Kericho (5666), Nyeri (5659), Kitui (4749), Murang'a (4318), Meru (4013), Kakamega (4011), Migori (3261), Kisii (3255), Laikipia (3058), Bungoma (3037), Makueni (2968), Nyandarua (2884), Garissa (2599), Turkana (2550), Embu (2548), Nandi (2288), Trans Nzoia (2274), Kirinyaga (2206), Homa Bay (2002), Taita Taveta (1978), Nyamira (1607), Baringo (1605), Bomet (1431), Narok (1344), Kwale (1281), Tharaka Nithi (1202), Vihiga (1032), Marsabit (926), West Pokot (805), Lamu (756), Isiolo (753), Elgeyo Marakwet (503), Mandera (409), Tana River (405), Samburu (311), Wajir (300).
- Nairobi city** and **Mombasa** Counties have the highest attack rates of COVID-19 at **2882.1** and **1447.2** per **100,000** population respectively when compared to **657.2/100,000** for the whole country and need enhanced interventions. In addition, the COVID-19 outbreak has so far spread to **100%** of the counties in the country. **Risk communication, laboratory testing, and contact tracing** have been identified as the key challenges
- Two hundred and ninety-six thousand one hundred and fifty-five - 296155 (95%) of the 312572 confirmed cases** are local transmissions.
- In the last 24 hours, 4,975 samples were tested across various laboratories of which one thousand and thirty-four (1,034) samples turned positive for COVID-19. A total of 3,104,457 cumulative tests have so far been conducted.**
- In the last 24 hours, 3,611 COVID-19 patients (Health Facility: 118, HBIC: 3,493) recovered and were discharged bringing the total number of recoveries and discharges for COVID- 268,573 (Facility: 50,083, HBIC: 218,490).**



**Total Cases**  
**=312,572**

**Male = 176768**  
**Female = 135804**

**Deaths**  
**=5454**

### 1.1 Epidemiology

Since 13 March 2020 when the first case was confirmed in Kenya, a total of **312572** confirmed cases and **5454** deaths giving a case fatality rate of **1.7%** have been line-listed. Of these, 296155 cases (95%) were local transmissions and 16415 (5%) are imported cases. Figure 1 below shows the trends of cases.

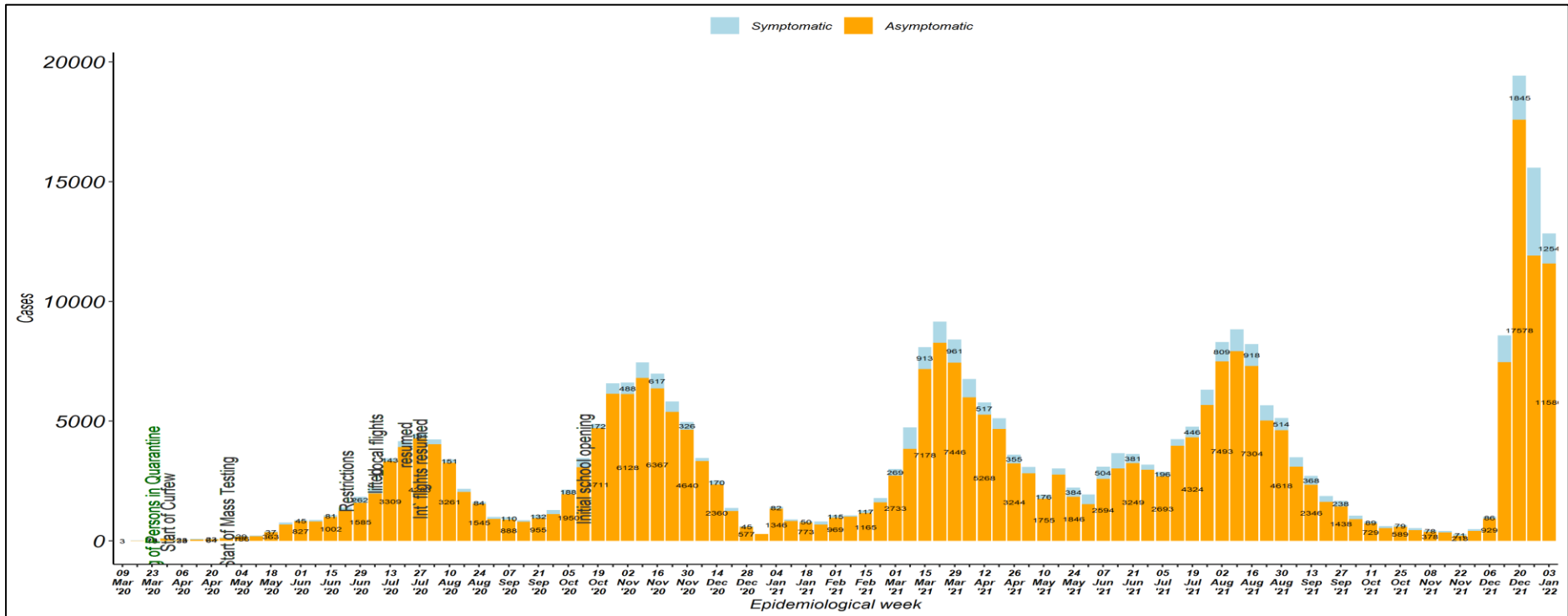


Figure 1: Trends of COVID-19 Outbreak Kenya



### 1.2 The trends of COVID-19 deaths

A total of **5454** cases died since the beginning of the outbreak giving a case fatality rate of **1.7%**. Figure 2 shows the trend of COVID-19 deaths by week.

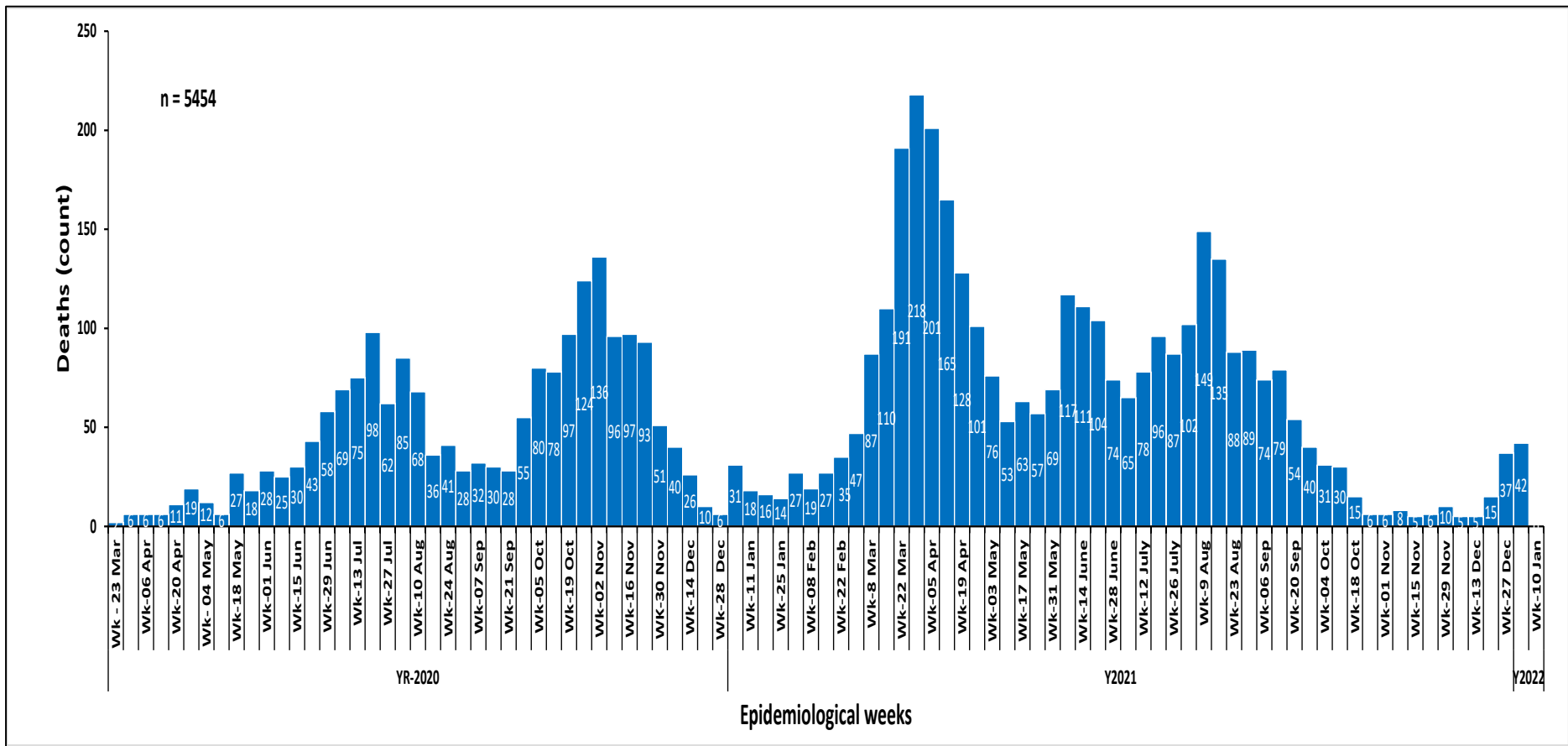


Figure 2: Fatalities by week



### 1.3 National caseload vs Nairobi County caseload

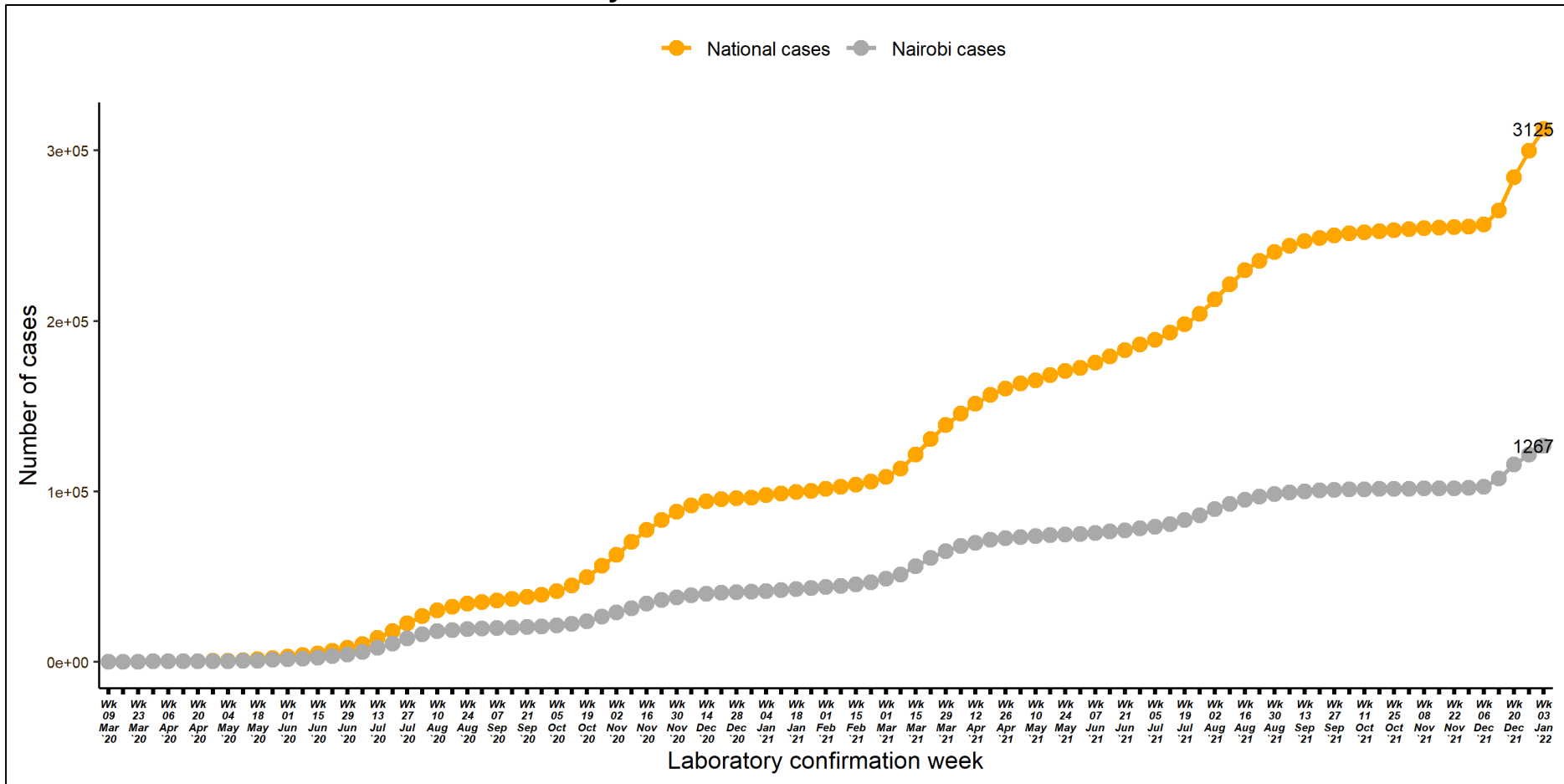


Figure 3: Cumulative cases by week of confirmation. Comparing National cases and Nairobi County cases



### 1.4 Laboratory testing

WHO recommends that one of the indicators that the pandemic is under control, is when < 5% of samples tested are positive for COVID-19 for the past 2 weeks, assuming that surveillance for suspected cases is comprehensive and testing rate of suspect cases, is optimum at least 1/1000 population/week. The laboratory test rate currently stands at 65,268.6 samples per 1,000,000 people. Figure 4 shows the weekly testing rate/1000 population/week.

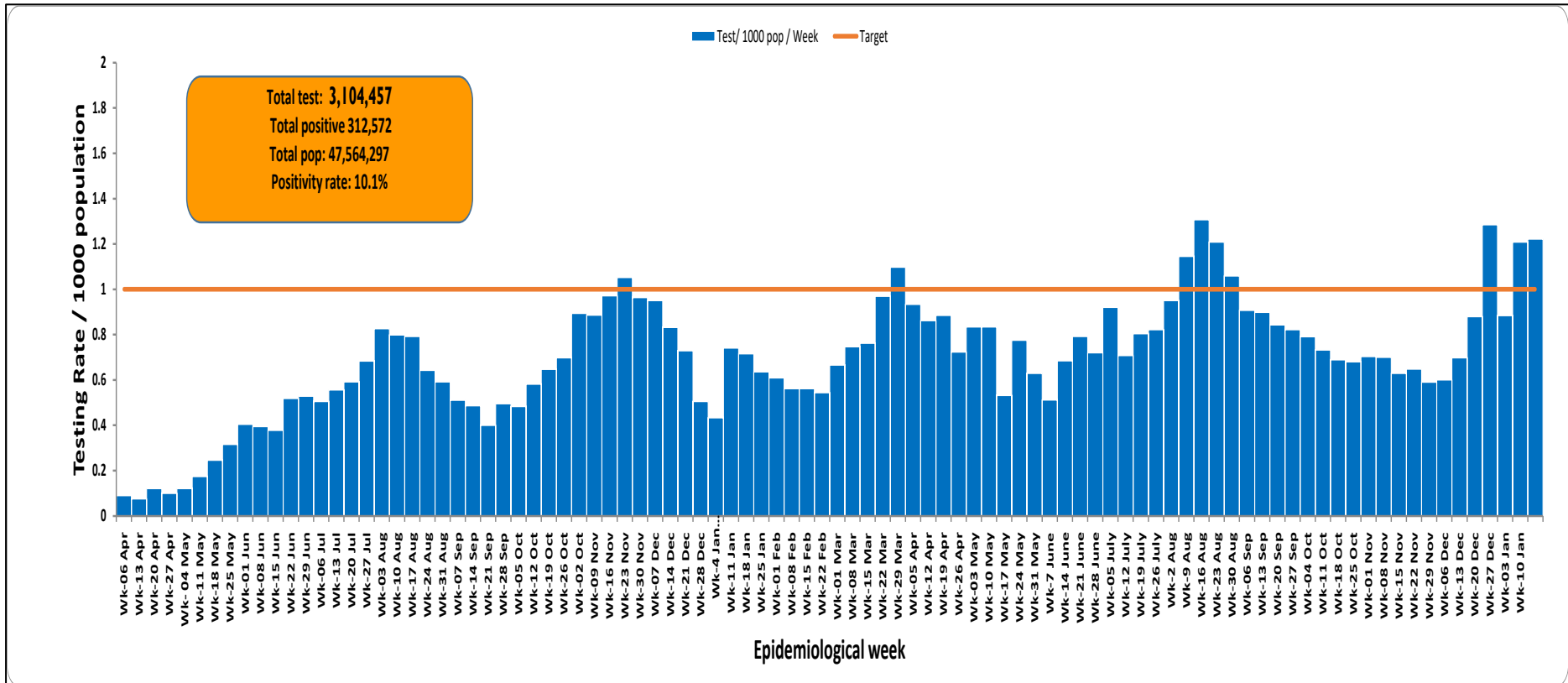


Figure 4: Laboratory Tests Conducted by Date Results were Shared



### 1.5 Distribution of Confirmed COVID-19 Cases by Presentation and Presentation of Symptoms among Symptomatic cases

Of the 312572 confirmed cases, 31989(10%) presented with symptoms (Figure 5). Cough (52%) and Fever (33%) were predominant presenting symptoms.

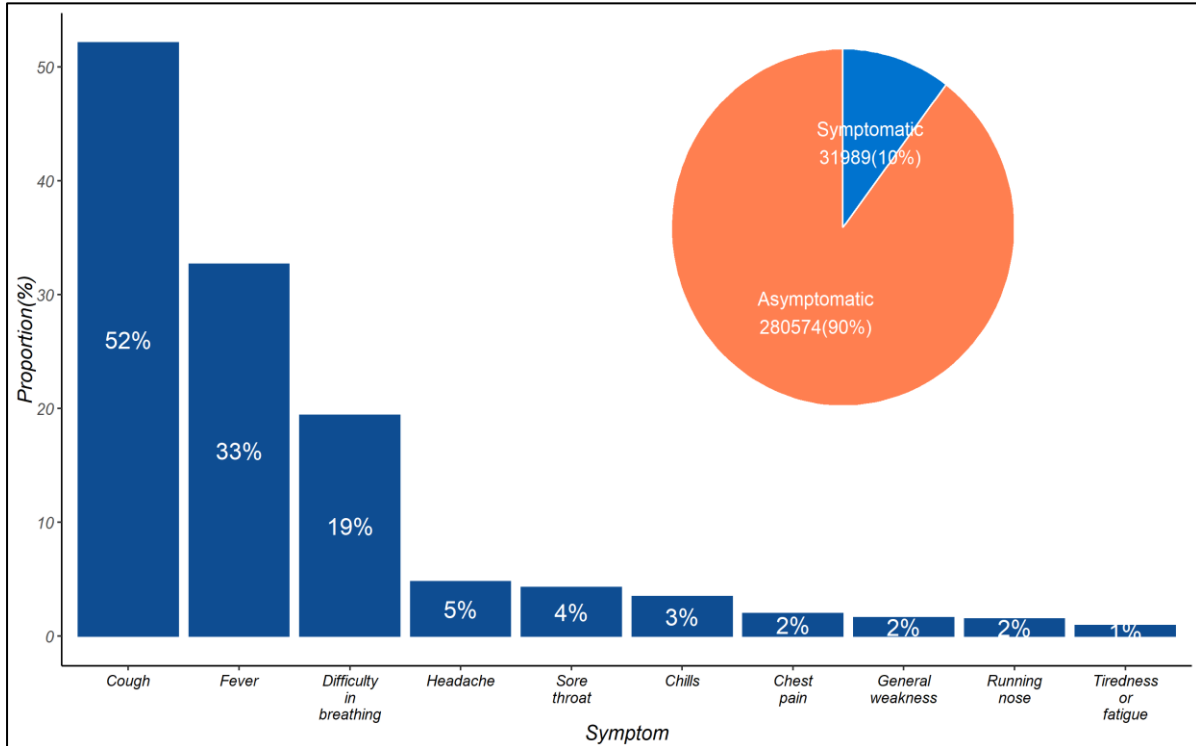


Figure 5: Distribution of Presenting Symptoms among Symptomatic COVID-19 Cases



### 1.6 Age and Sex Distribution of COVID Confirmed Cases and Deaths

One hundred and seventy-six thousand seven hundred and sixty-eight (57%) are males and 135804 (43%) are females. Most of the cases; 81389 (26%), are in the age group of 30-39 years. Figure 6 below shows the age and sex distribution of COVID-19 cases.

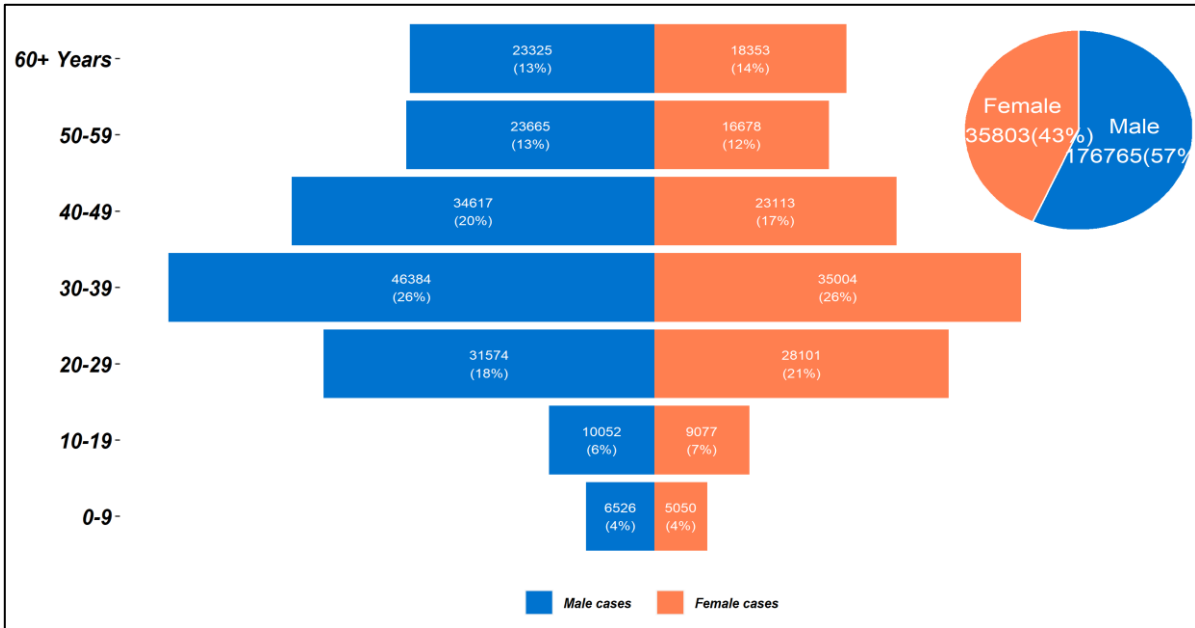


Figure 6: Age and Sex Distribution of COVID-19 Cases Kenya

A total of 5454 deaths have been reported so far, 3482 (64%) being males and 1972 (36%) were females (Figure 7).

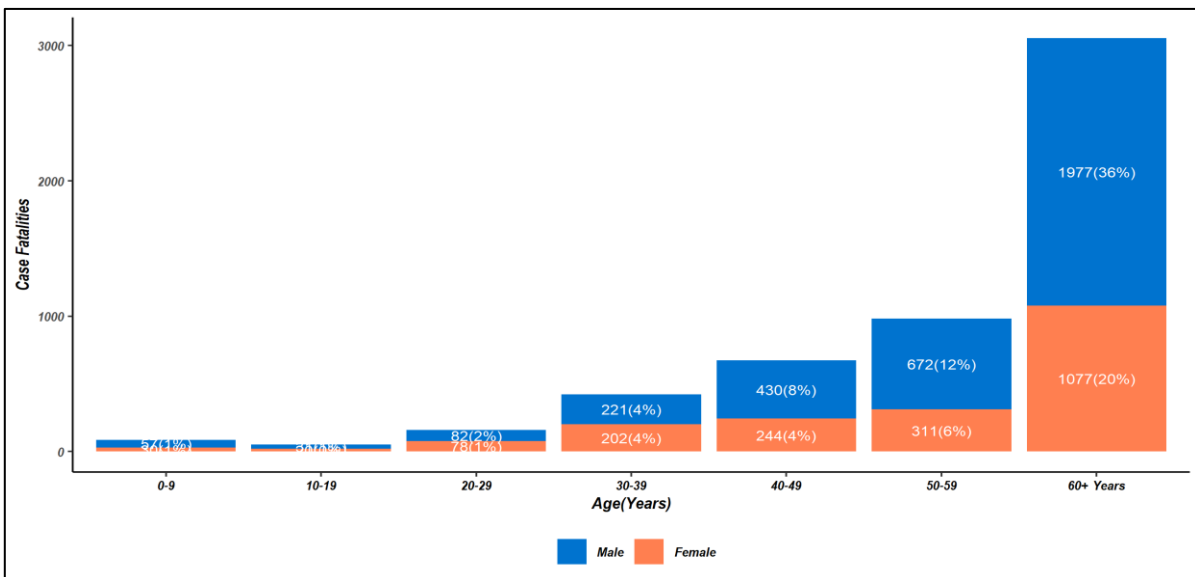


Figure 7: Distribution of Case Fatalities by Age and Sex



### 1.7 Trends of health care workers

Among the cases who had their occupation filled in, a cumulative of 12,334 health professionals (1 new case) and 53 mortalities (No new deaths) have been reported in all the 47 counties.

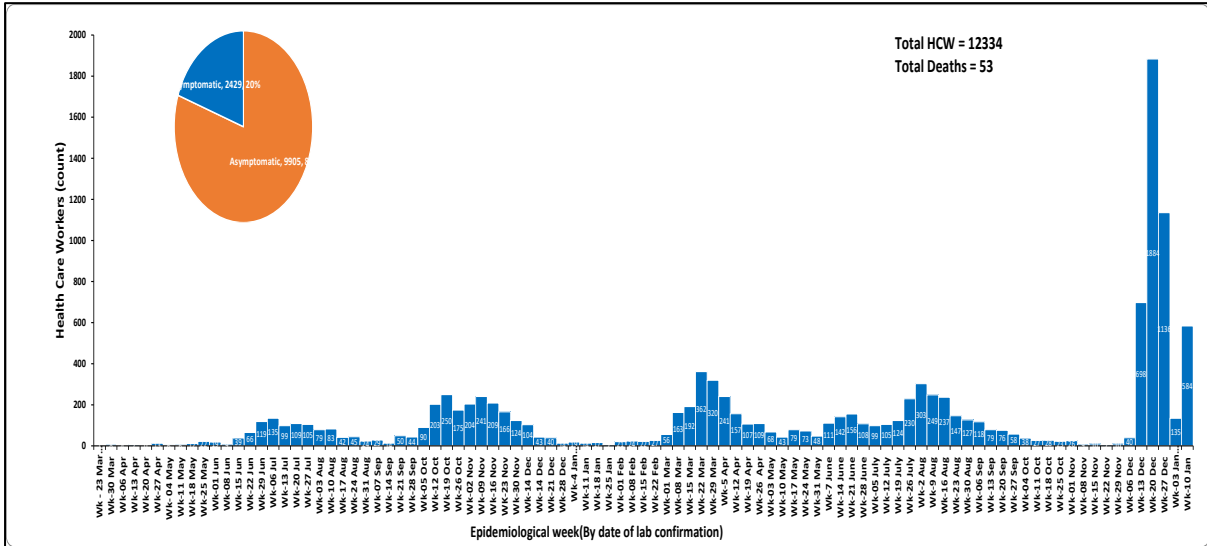


Figure 8: Covid-19 cases among health care workers

### 1.8 Figure 9 shows cases among health care workers by county

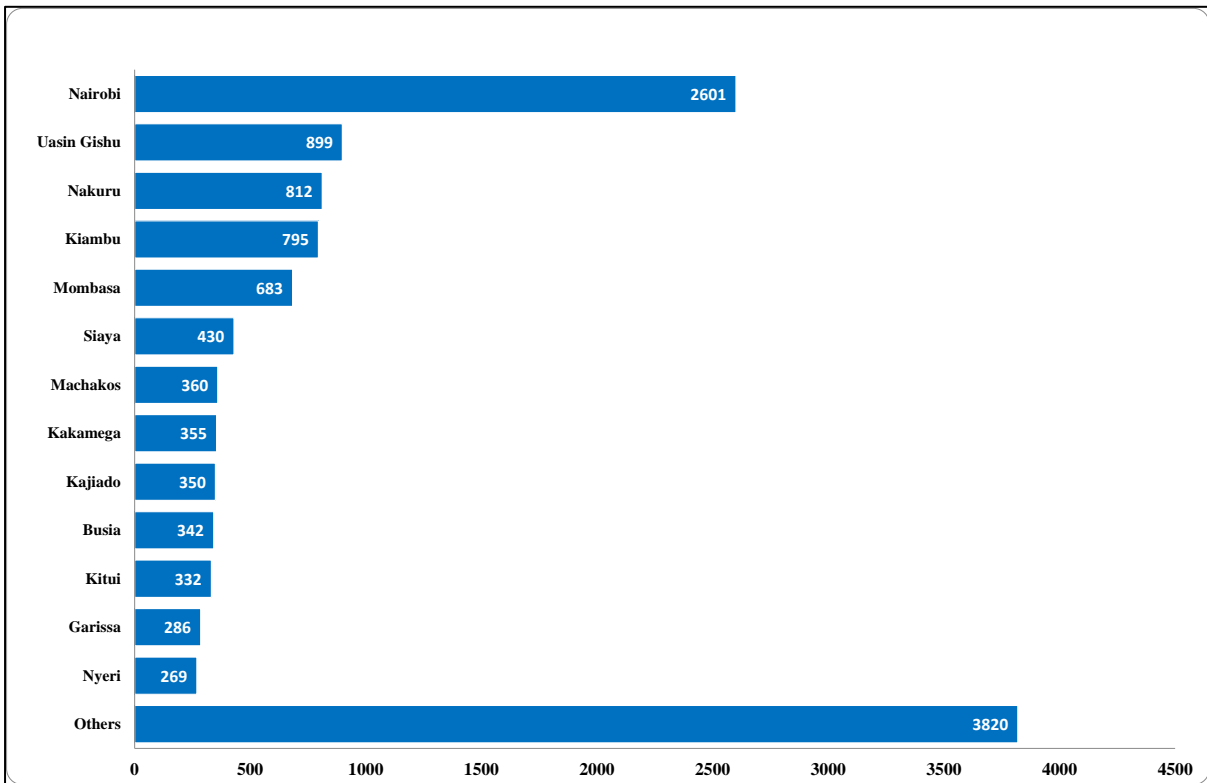


Figure 9: Health care workers cases by counties



Other counties reporting health care workers cases include – Kilifi (260), Kisumu(250), Migori (210), Turkana (208), Meru (206), Makeni(197), Taita Taveta(195), Kisii (179), Bungoma(168), Homa Bay(162), Murang’a(162), Nyandarua (160), Laikipia (145), Tharaka Nithi(133), Kirinyaga(131), West Pokot(128), Nandi(126), Kericho(108), Narok(93), Lamu(72), Embu(70), Isiolo(62), Marsabit (56), Tana River (49), Baringo(42), Bomet(40), Vihiga (37), Elgeyo Marakwet(34), Wajir(30), Kwale (25), Mandera(25), Trans Nzoia(23), Samburu (19), Nyamira (15).

## 1.9 Distribution of Confirmed COVID-19 Cases by County and Transmission Classification

Of the **312572** cases, 126729 (41%) are from Nairobi County followed by Kiambu County with 19839 (6%) as shown in Table 1.

**Table 1: Distribution of confirmed COVID-19 Cases by County and transmission classification**

County	Imported	Local
Nairobi	585	120460
Kiambu	37	18889
Mombasa	452	16492
Nakuru	39	15427
Uasin Gishu	32	9584
Machakos	12	7207
Kajiado	50	7199
Kisumu	19	7162
Kilifi	20	6446
Busia	177	6160
Siaya	3	5537
Nyeri	2	5364
Kericho	2	5355
Kitui	2	4587
Murang'a	1	4069
Meru	0	3769
Kakamega	9	3723
Kisii	6	3110
Bungoma	5	2970

<b>County</b>	<b>Imported</b>	<b>Local</b>
Laikipia	2	2886
Makueni	3	2850
Migori	22	2798
Nyandarua	2	2761
Garissa	5	2502
Embu	0	2430
Turkana	22	2346
Trans Nzoia	1	2201
Nandi	0	2159
Kirinyaga	1	2093
Homabay	6	1911
Taita Taveta	9	1808
Baringo	1	1558
Nyamira	0	1514
Bomet	0	1374
Narok	2	1279
Tharaka Nithi	0	1158
Kwale	16	1140
Vihiga	2	980
Marsabit	0	885
Lamu	0	739
Isiolo	2	734
West Pokot	0	702
Elgeyo Marakwet	0	490
Tana River	0	385
Mandera	5	375
Samburu	0	308
Wajir	17	278



### 1.10 Map of Kenya showing COVID-19 attack rate by County per 100,000 population

Nairobi City County has the highest attack rate of 2882.1 per 100,000 population followed by Mombasa County at 1447.2 per 100,000 population (Figure 10).

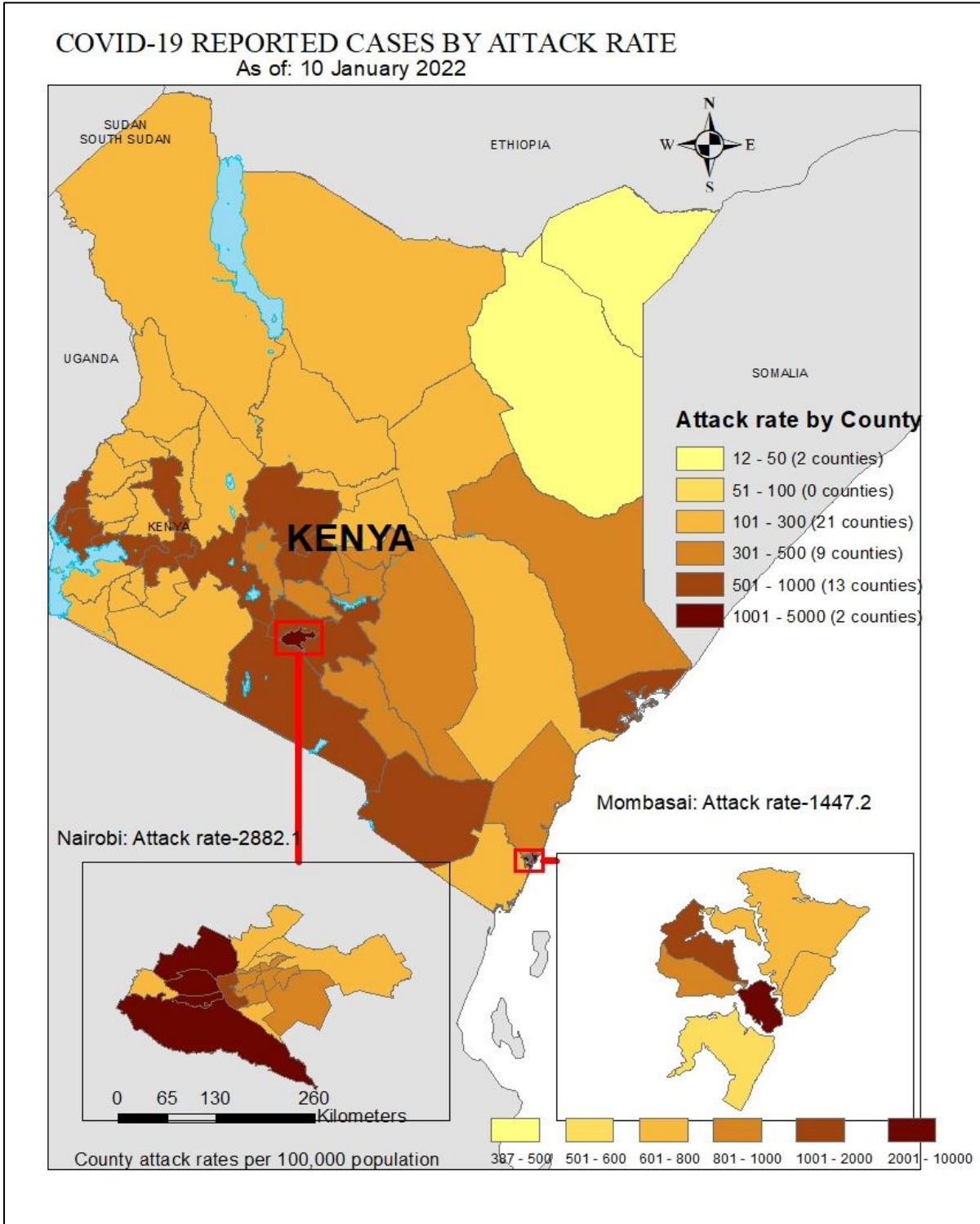


Figure 10: County Attack Rate per 100,000 Population



# 1.11 Map of Kenya showing COVID-19 caseload by County

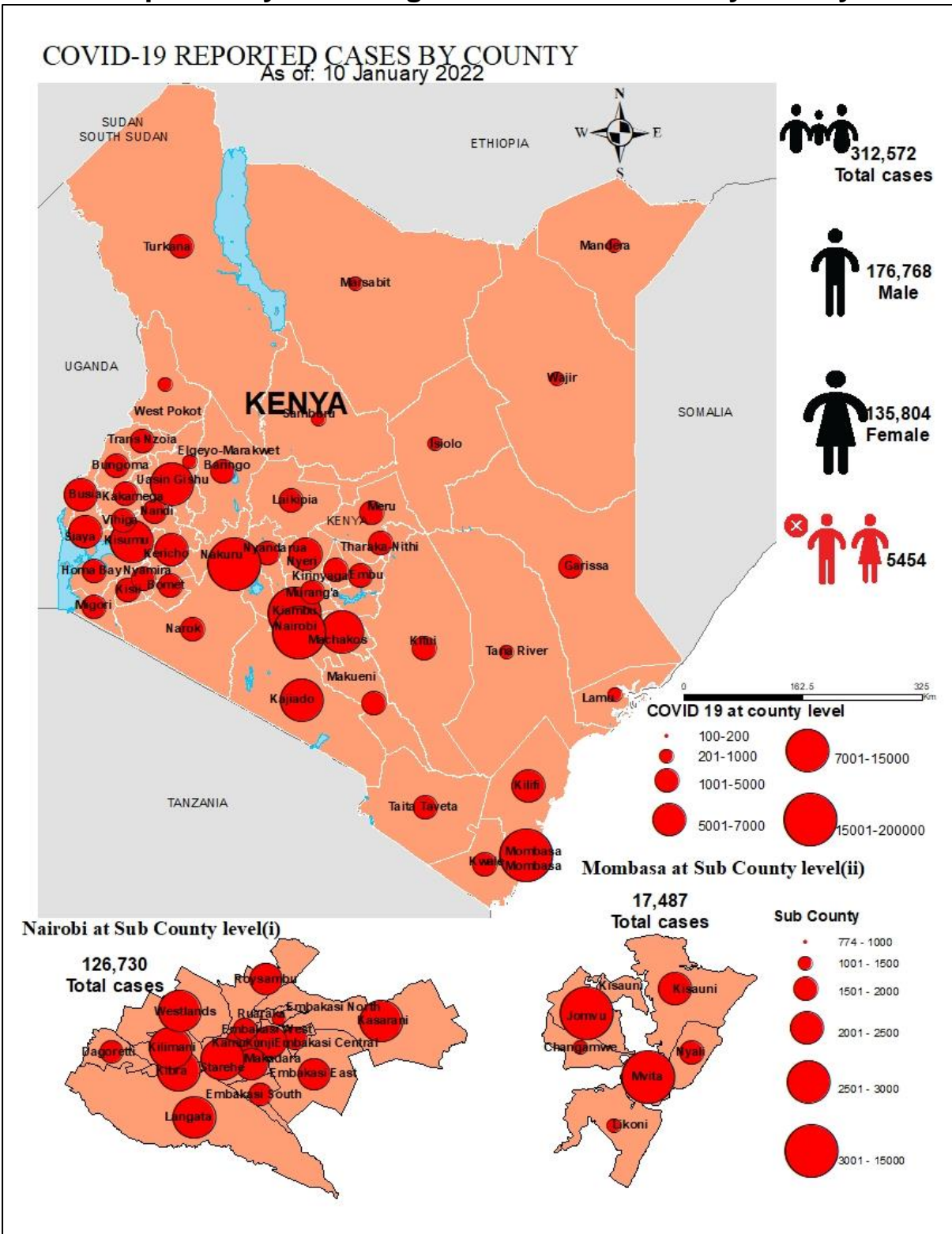


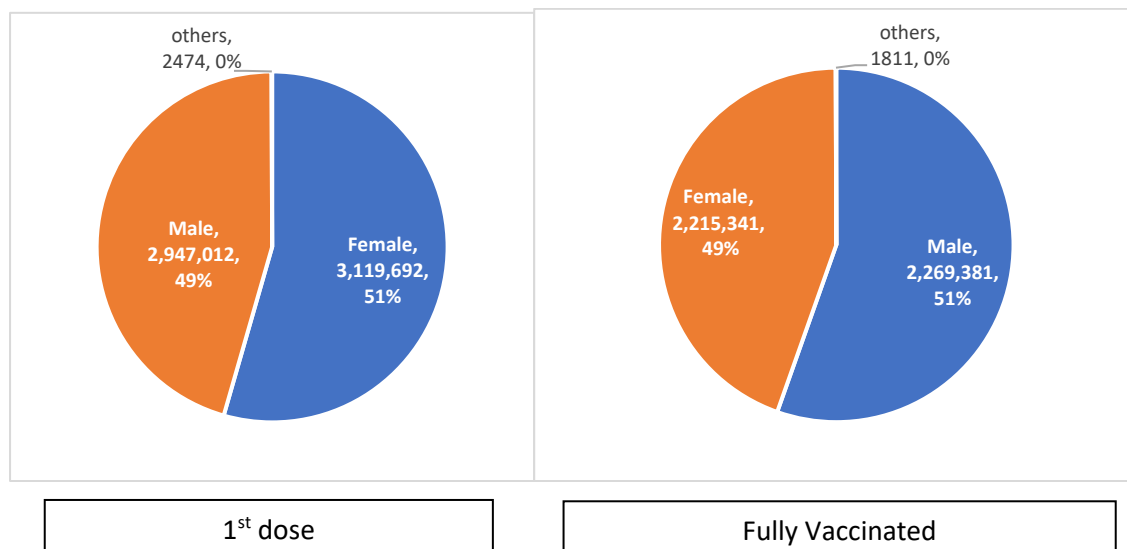
Figure 11: County Attack Rate per 100,000 Population

## 1.12 Kenya COVID-19 Vaccination Updates



				
<b>Total Vaccinated dose1</b>	<b>6,047,125</b>		<b>Male 2,947,012 (49%)</b>	<b>Female:3,119,692(51%)</b>
<b>Fully Vaccinated</b>	<b>4,486,533</b>		<b>2,269,381 (51.0%)</b>	<b>2,215,341(49%)</b>

The Kenya Ministry of Health launched the National COVID-19 vaccinations on the 5<sup>th</sup> March 2021 after receiving **1,120,000** doses of the AstraZeneca Vaccine through the COVID-19 Vaccines Global Access (COVAX) facility. As of 9<sup>th</sup> January 2022, a total of **6,047,125 persons** were vaccinated with the 1<sup>st</sup> dose and **4,486,533 persons** were fully vaccinated, targeting frontline workers, teachers, security officers, and those above 58 years of age. 51% of those vaccinated with the 1<sup>st</sup> dose were females and 49% were male. 51% of those fully vaccinated were males and 49% were female. Others (intersex/transgender) constituted 2,474 in the 1<sup>st</sup> dose and 1,811 were fully vaccinated. (Figure 12).



**Figure 12: Sex Distribution of persons Vaccinated**

The highest proportion of the population fully vaccinated was in Nairobi County at 35.4% and the least was in Tana River County (3.9%) (Table 2).

**Table 2: Distribution of 2<sup>nd</sup> doses and proportion of fully Vaccinated by County**

County	Vaccinations dose 2	Target population above 18 years	Proportion of fully vaccinated population		County	Vaccinations dose 2	Target population above 18 years	Proportion of fully vaccinated population
Nairobi	1,082,005	3,052,494	<b>35.40%</b>		Elgeyo Marakwet	30,572	243,690	<b>12.50%</b>
Nyeri	167,633	510,028	<b>32.90%</b>		Meru	115,922	949,186	<b>12.20%</b>
Laikipia	81,285	306,448	<b>26.50%</b>		Makueni	69,134	584,379	<b>11.80%</b>
Kiambu	380,767	1,623,545	<b>23.50%</b>		Baringo	35,819	338,937	<b>10.60%</b>
Kakamega	213,114	982,838	<b>21.70%</b>		Nandi	47,391	492,652	<b>9.60%</b>
Taita Taveta	41,345	213,335	<b>19.40%</b>		Busia	44,176	465,190	<b>9.50%</b>
Uasin Gishu	131,065	693,570	<b>18.90%</b>		Samburu	13,527	145,608	<b>9.30%</b>
Muranga	126,570	675,364	<b>18.70%</b>		Migori	49,030	557,657	<b>8.80%</b>
Nyandarua	69,162	376,776	<b>18.40%</b>		Kisii	61,079	697,445	<b>8.80%</b>
Machakos	162,422	905,172	<b>17.90%</b>		Kwale	36,528	451,261	<b>8.10%</b>
Kirinyaga	73,561	413,708	<b>17.80%</b>		Isiolo	10,342	133,358	<b>7.80%</b>
Nakuru	223,992	1,273,265	<b>17.60%</b>		Homa Bay	46,077	608,326	<b>7.60%</b>
Kisumu	110,745	656,147	<b>16.90%</b>		Kitui	47,019	624,506	<b>7.50%</b>
Mombasa	134,846	804,202	<b>16.80%</b>		Marsabit	13,095	219,170	<b>6.00%</b>
Vihiga	54,189	329,317	<b>16.50%</b>		Garissa	23,722	399,358	<b>5.90%</b>
Embu	64,757	395,980	<b>16.40%</b>		Kilifi	46,584	784,567	<b>5.90%</b>
Kajiado	107,629	663,201	<b>16.20%</b>		West Pokot	16,732	283,727	<b>5.90%</b>
Bungoma	133,404	843,735	<b>15.80%</b>		Mandera	19,939	341,857	<b>5.80%</b>
Trans Nzoia	74,762	518,077	<b>14.40%</b>		Bomet	26,839	465,963	<b>5.80%</b>
Lamu	11,173	83,433	<b>13.40%</b>		Narok	30,371	548,229	<b>5.50%</b>
Tharaka Nithi	32,913	246,699	<b>13.30%</b>		Wajir	16,441	337,296	<b>4.90%</b>
Kericho	67,588	508,980	<b>13.30%</b>		Turkana	21,770	468,878	<b>4.60%</b>
Nyamira	44,232	341,397	<b>13.00%</b>		Tana River	5,855	151,051	<b>3.90%</b>
Siaya	69,410	536,031	<b>12.90%</b>		Total	4,486,533	27,246,033	16.50%

The proportion of health care workers who were fully vaccinated as of 9<sup>th</sup> January 2022 was highest at 83.0% as shown below.

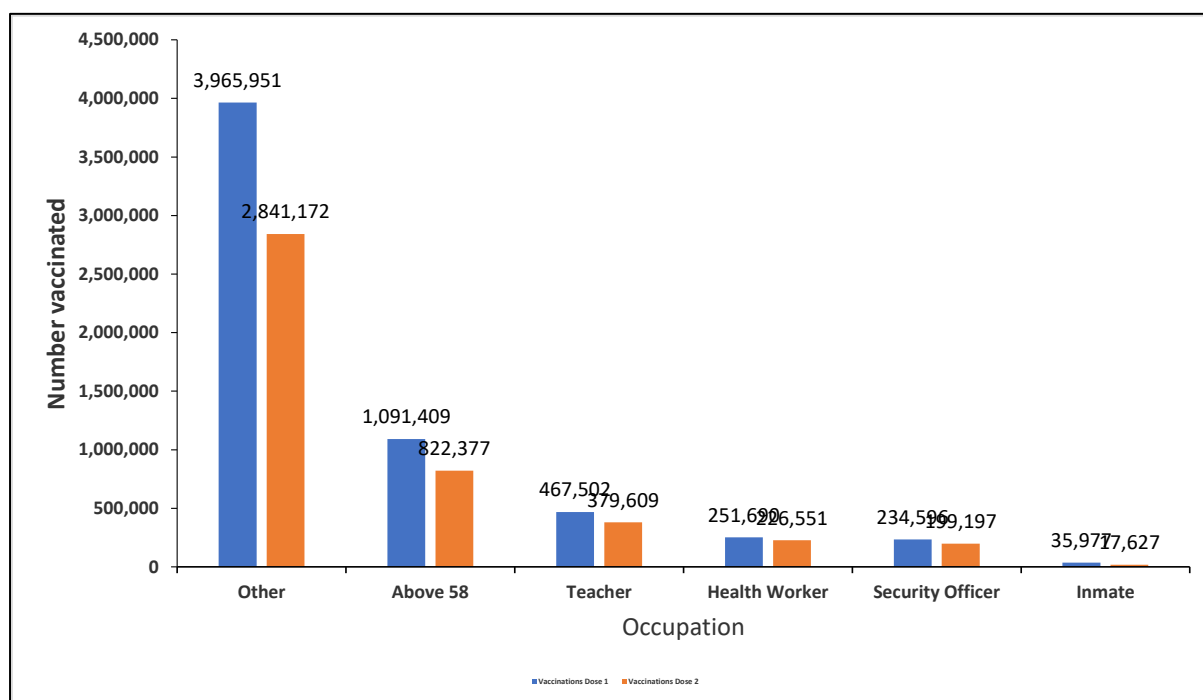


Figure 13: Distribution of persons Vaccinated with 1<sup>st</sup> and 2<sup>nd</sup> dose by Occupation

Table 3: Distribution of fully vaccinated persons by priority group

Priority group	Johnson and Johnson	Dose 2 uptake	Fully vaccinated (Dose 2 uptake+Johnson & Johnson)	Dose 1 uptake	% Fully vaccinated
Health Workers	17,763	208,788	226,551	251,690	83.00%
Security Officers	24,830	174,367	199,197	234,596	74.30%
Teachers	35,082	344,527	379,609	467,502	73.70%
Above 58 years old	147,819	674,558	822,377	1,091,409	61.80%
Others	829,732	2,011,440	2,841,172	3,965,951	50.70%
Inmates	3,834	13,793	17,627	35,977	38.30%
<b>Total</b>	<b>1,059,060</b>	<b>3,427,473</b>	<b>4,486,533</b>	<b>6,047,125</b>	<b>56.70%</b>

Sixteen (16.5) percent of the phase 1 targets have so far been fully vaccinated with 108.7% of the health care workers Vaccinated for dose 2 (Table 4).

**Table 4: Progress towards meeting targets: Kenya, 9<sup>th</sup> January 2022**

Occupation	Fully Vaccinated	Target	% Fully Vaccinated
Health Workers	226,551	208,418	108.7%
Security Officers	199,197		
Teachers	379,609	330,671	114.8%
Above 58 years old	822,377	2,594,585	31.7%
Others	2,841,172		
Inmates	17,627	49,000	36.0%
<b>Total</b>	<b>4,486,533</b>	<b>27,246,033</b>	<b>16.5%</b>

### Vaccine LOGISTICS 9<sup>th</sup> January 2022

**Table 5: Current Vaccines Stocks Status**

Location	Quantities (Doses)
National (CVS Kitengela)	7,338,710
Total distributed to 9 regional depots	<b>15,941,110</b>
<b>Total</b>	<b>23,279,820</b> Inclusive: <b>AstraZeneca</b> (GOK- 1,020,000, India-100,000, MOH South Sudan- 72,000, Denmark-2,769,100, UK-817,040, Greece-180,000, Canada, US-459,300, Latvia-55,200, Poland-211,200, Slovakia- 160,000, COVAX France- 401,900, Netherlands-2,292,000, COVAX Germany-2,592,000, Argentina- 400,000) <b>J&amp;J</b> (GOK-1,804,800, Germany- 4,291,200, USA- 1,176,000) <b>Moderna</b> (USA-1,760,780, Spain-564,480) <b>PFIZER</b> (USA-2,822,040) <b>Sinopharm</b> (China-200,000).

**Table 6: Vaccine Doses Dispensed as of 9<sup>th</sup> January 2022**

Vaccine	Total doses Administered
Total 1st doses (All vaccines)	<b>6,047,125</b>
Fully vaccinated	<b>4,486,533</b>
Total doses (All Vaccines + Sputnik)	<b>10,609,955</b>
First Dose 15-18 years (Pfizer)	<b>24,326</b>
% of adults fully vaccinated	<b>16.5%</b>



## 2.0 KEY ACTIONS

### 2.1 Coordination

- Response efforts continue to be coordinated through a whole government and multi-agency approach following Executive Order No. 2 of 2021 issued by His Excellency the President on 26<sup>th</sup> March 2021.
- The National Emergency Response Committee that was constituted following the executive order meets regularly to provide policy directions on response efforts towards the COVID-19 outbreak.
- The Public Health Emergency Operations Centre is fully activated and continues to coordinate response measures as well as provide daily situation reports informing planning.

### 2.2 Case Management and Infection Prevention & Control

- In the last 24 hours, 3,611 COVID-19 patients (Health Facility: 118, HBIC: 3,493) recovered and were discharged bringing the total number of recoveries and discharges for COVID- 268,573 (Facility: 50,083, HBIC: 218,490).
- Currently, there are 45 COVID-19 cases admitted in the intensive care unit; 1 on supplemental oxygen; 44 on ventilatory support, and 0 under observation.
- The total number of health workers infected is **12,334 (1 new case)** with 53 mortalities (**no new death**) reported in all 47 counties.

### 2.3 Surveillance and laboratory and Point of Entry

- All alerts were responded to and contact tracing continued in all affected counties.
- The Diagnostic capacity in the Country has been scaled up. A total of eighty-eight (88) public and private laboratories in thirteen (13) counties (Nairobi, Kisumu, Mombasa, Kilifi, Wajir, Kericho, Uasin Gishu, Machakos, Busia, Nakuru, Kajiado, Trans Nzoia, and Mandera) are currently conducting confirmatory tests for COVID-19.
- In the last 24 hours, 4,975 samples were tested across various laboratories of which one thousand and thirty-four (1,034) samples turned positive for COVID-19. A total of 3,104,457 cumulative tests have so far been conducted.
- Mandatory screening of cargo vessel crew is ongoing at all points of entry to minimize the risk of importation of additional cases from other affected countries.
- Port Health Services at all points of entry and other stakeholders' measures have been put in place to ensure the safety of travelers and traders in line with Ministry of Health guidelines on social distancing, hand washing, sanitizing, and enhanced temperature screening, disinfection of facilities, and sensitization of staff.

### 3.0 KEY CHALLENGES

- Stigmatization and discrimination on COVID-19 suspects affecting willingness to seek testing and management of cases likely to lead to further spread of the disease.
- Commodity insecurity at the sub-national level of both personal protective equipment and laboratory reagents at COVID – 19 testing laboratories.
- There is a shortage of sampling kits across several counties affecting testing of suspected cases, contacts, and limiting overall access to testing.
- Inadequate resources to facilitate critical response pillars limiting response capacity in detecting, investigating, contact tracing, and follow-up of cases.

### 4.0 NEXT STEPS

- Strengthen enforcement of public health measures across the country as directed by the President.
- There is a need to streamline cross-country coordination to address issues around the borders especially those counties bordering neighboring countries.
- Strengthening the contact tracing in the sub-counties.
- Strengthen commodity security of personal protective equipment at the sub-national level.
- Strengthen diagnostic quality assurance system

#### Emergency Operation Center:

Telephone: 0729 471 414, 0732 353 535, 0800 721316(Toll Free)  
COVID-19 Call center: \*719# (short message only), 719 (Audio)  
COVID-19 Dashboard: [https://khro.health.go.ke/#/covid\\_19\\_tracker](https://khro.health.go.ke/#/covid_19_tracker)  
Email: [manager.eockenya@gmail.com](mailto:manager.eockenya@gmail.com)