



COVID-19 OUTBREAK IN KENYA

DAILY SITUATION REPORT - 665

1. KEY HIGHLIGHTS

- One thousand one hundred and five (1105)** new confirmed COVID-19 cases were reported in the last 24 hours bringing the total number of confirmed cases in Kenya to **313677 cases** as of 11 January 2022. Counties reporting new cases are **Nairobi (262), Mombasa (75), Siaya (75), Bomet (74), Kisumu (67), Uasin Gishu (62), Laikipia (61), Nakuru (48), Kilifi (33), Kakamega (28), Kisii (28), Taita Taveta (27), Vihiga (27), Makueni (22), Bungoma (19), Busia (19), Kiambu (18), Embu (15), Nyamira (15), Marsabit (13), Nyandarua (11), Meru (9), Tharaka Nithi (9), Garissa (7), Homa Bay (7), Machakos (7), Murang'a (7), Nyeri (7), Kericho (6), Narok (6), Kwale (5), Nandi (5), West Pokot (5), Baringo (4), Manderu (4), Migori (4), Turkana (4), Kajiado (3), Lamu (3), Elgeyo Marakwet (2) and Kirinyaga (2).**
- Eight (8) deaths have been reported over the last 24 hrs.** The total number of deaths reported since the beginning of the outbreak is **5462, case fatality rate (CFR) is 1.7%**
- As of today, **forty-seven (47) counties** have reported cases namely: Nairobi (126992), Kiambu (19857), Mombasa (17562), Nakuru (16470), Uasin Gishu (10246), Kisumu (7675), Machakos (7554), Kajiado (7534), Kilifi (6847), Busia (6464), Siaya (6045), Kericho (5672), Nyeri (5666), Kitui (4749), Murang'a (4325), Kakamega (4039), Meru (4022), Kisii (3283), Migori (3265), Laikipia (3119), Bungoma (3056), Makueni (2990), Nyandarua (2895), Garissa (2606), Embu (2563), Turkana (2554), Nandi (2293), Trans Nzoia (2273), Kirinyaga (2208), Homa bay (2009), Taita Taveta (2005), Nyamira (1622), Baringo (1609), Bomet (1505), Narok (1350), Kwale (1286), Tharaka Nithi (1211), Vihiga (1059), Marsabit (939), West Pokot (810), Lamu (759), Isiolo (753), Elgeyo Marakwet (505), Manderu (413), Tana River (405), Samburu (311), Wajir (300).
- Nairobi city** and **Mombasa** Counties have the highest attack rates of COVID-19 at **2888.1** and **1453.4** per **100,000** population respectively when compared to **659.5/100,000** for the whole country and need enhanced interventions. In addition, the COVID-19 outbreak has so far spread to **100%** of the counties in the country. **Risk communication, laboratory testing, and contact tracing** have been identified as the key challenges
- Two hundred and ninety-seven thousand two hundred and sixty - 297260 (95%) of the 313677 confirmed cases** are local transmissions.
- In the last 24 hours, 6,945 samples were tested across various laboratories of which one thousand one hundred and five (1,105) samples turned positive for COVID-19. A total of 3,111,402 cumulative tests have so far been conducted.**
- In the last 24 hours, 3,320 COVID-19 patients (Health Facility: 329, HBIC: 2,991) recovered and were discharged bringing the total number of recoveries and discharges for COVID- 271,893 (Facility: 50,412, HBIC: 221,481).**

**Total Cases
=313,677**

**Male = 177302
Female = 136375**

**Deaths
=5462**

1.1 Epidemiology

Since 13 March 2020 when the first case was confirmed in Kenya, a total of **313,677** confirmed cases and **5462** deaths giving a case fatality rate of **1.7%** have been line-listed. Of these, 297260 cases (95%) were local transmissions and 16415 (5%) are imported cases. Figure 1 below shows the trends of cases.

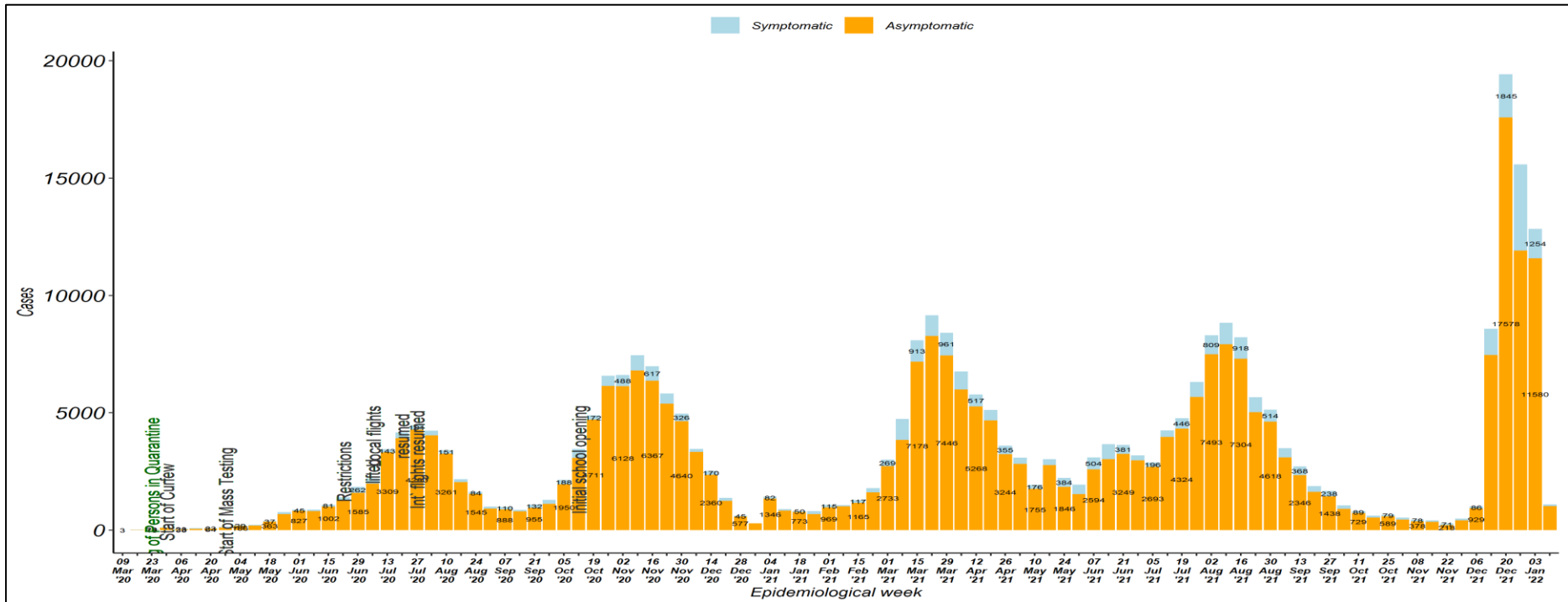


Figure 1: Trends of COVID-19 Outbreak Kenya



1.2 The trends of COVID-19 deaths

A total of **5462** cases died since the beginning of the outbreak giving a case fatality rate of **1.7%**. Figure 2 shows the trend of COVID-19 deaths by week.

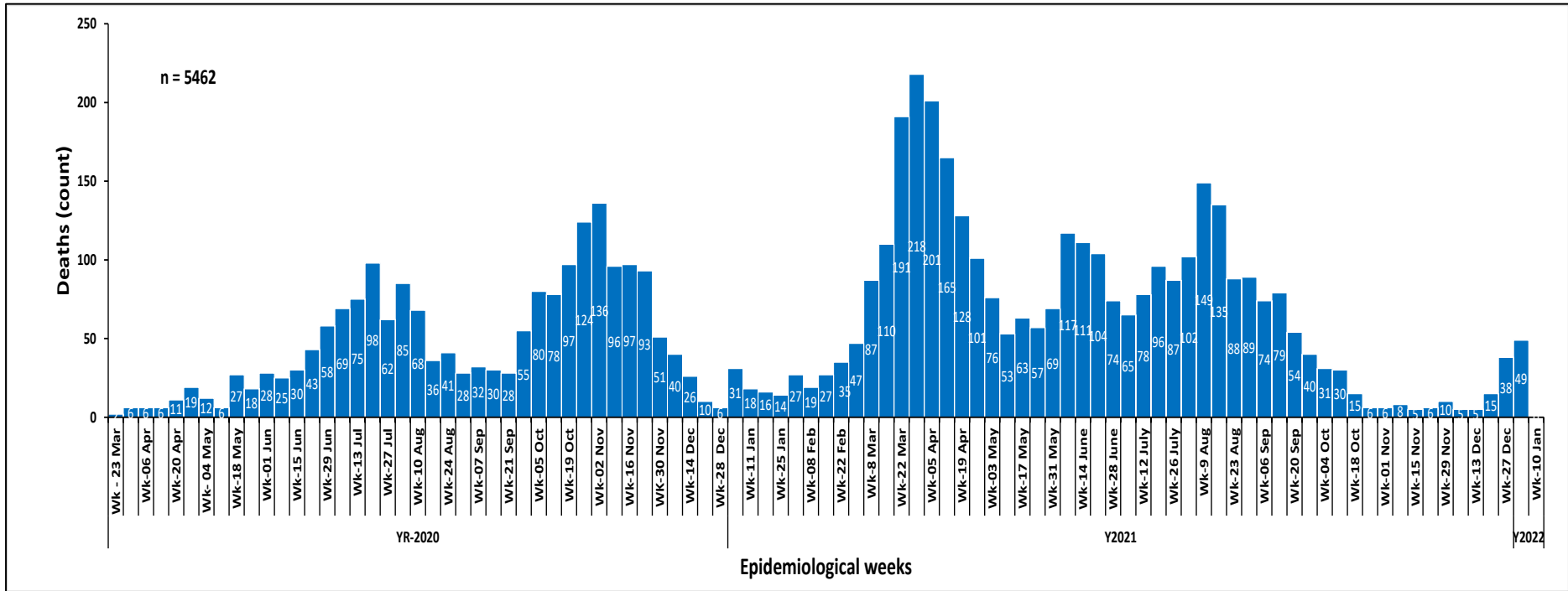


Figure 2: Fatalities by week



1.3 National caseload vs Nairobi County caseload

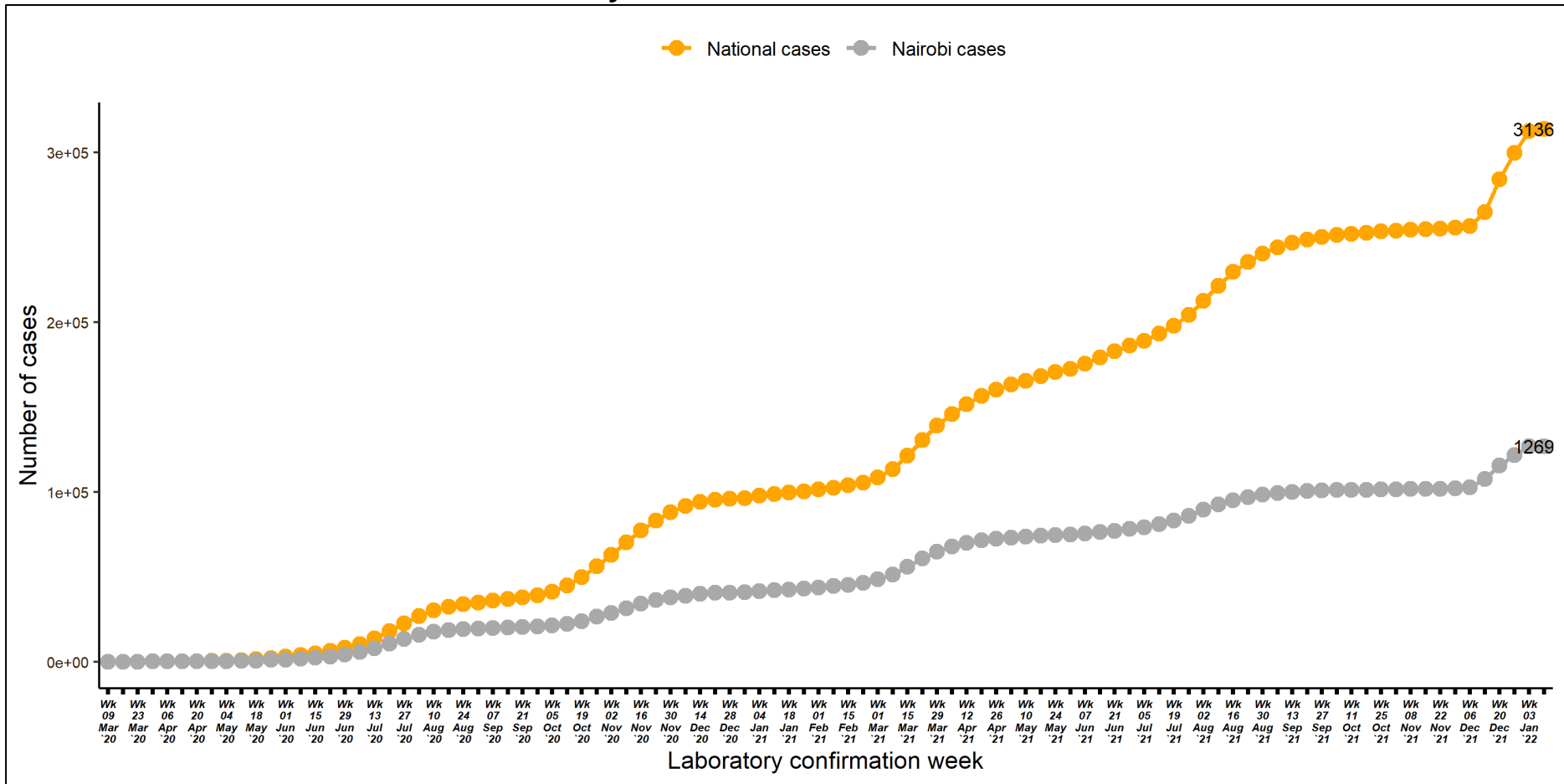


Figure 3: Cumulative cases by week of confirmation. Comparing National cases and Nairobi County cases



1.4 Laboratory testing

WHO recommends that one of the indicators that the pandemic is under control, is when < 5% of samples tested are positive for COVID-19 for the past 2 weeks, assuming that surveillance for suspected cases is comprehensive and testing rate of suspect cases, is optimum at least 1/1000 population/week. The laboratory test rate currently stands at **65,414.7** samples per 1,000,000 people. Figure 4 shows the weekly testing rate/1000 population/week.

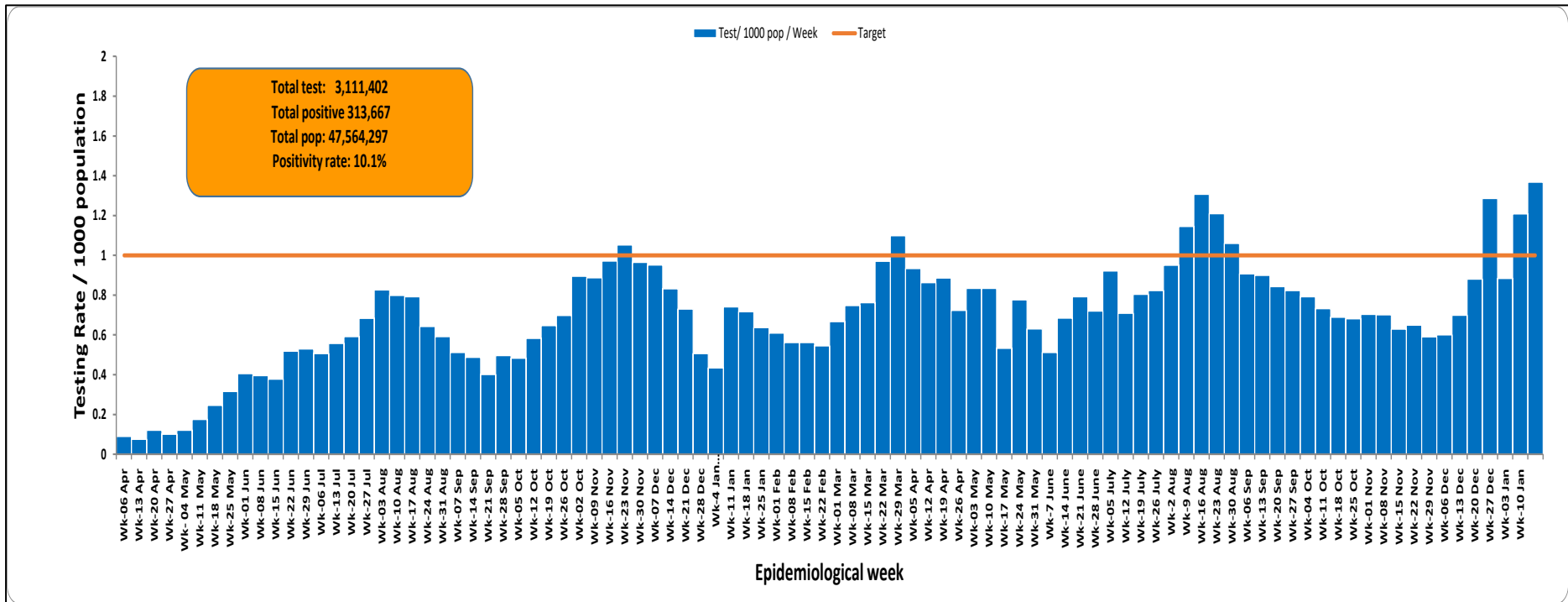


Figure 4: Laboratory Tests Conducted by Date Results were Shared



1.5 Distribution of Confirmed COVID-19 Cases by Presentation and Presentation of Symptoms among Symptomatic cases

Of the 313677 confirmed cases, 32068(10%) presented with symptoms (Figure 5). Cough (52%) and Fever (33%) were predominant presenting symptoms.

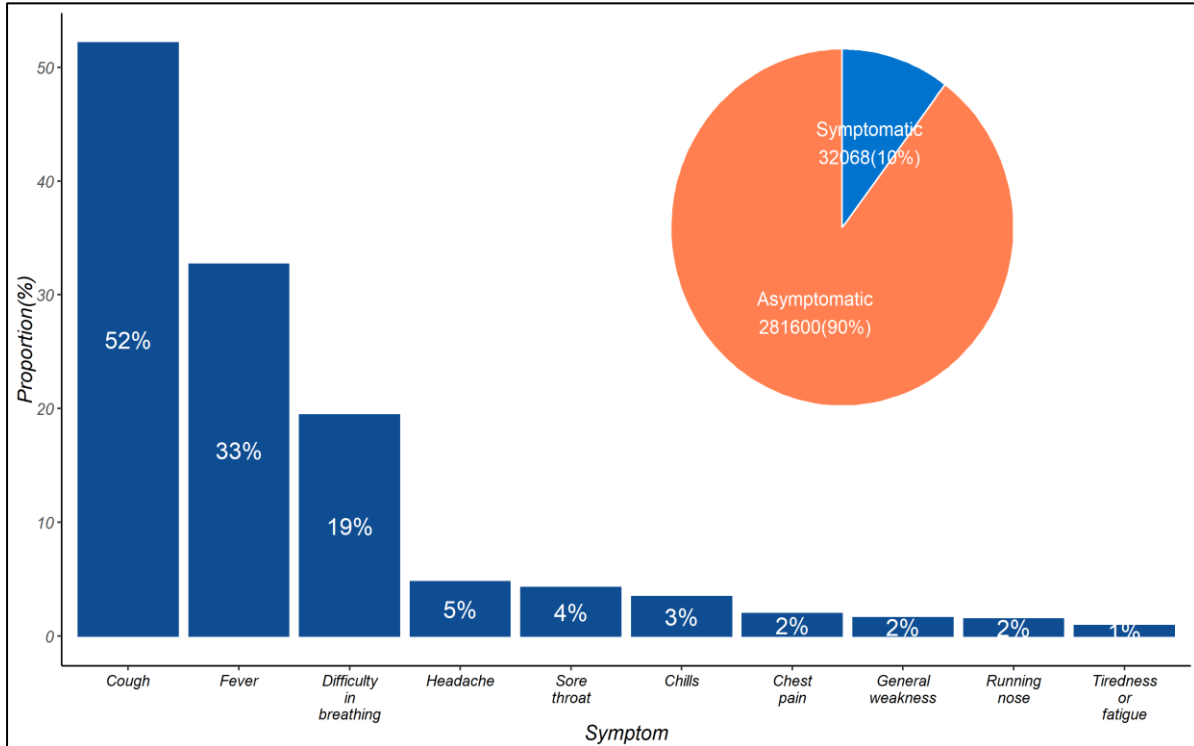


Figure 5: Distribution of Presenting Symptoms among Symptomatic COVID-19 Cases



1.6 Age and Sex Distribution of COVID Confirmed Cases and Deaths

One hundred and seventy-seven thousand three hundred and two (57%) are males and 136375 (43%) are females. Most of the cases; 81604 (26%), are in the age group of 30-39 years. Figure 6 below shows the age and sex distribution of COVID-19 cases.

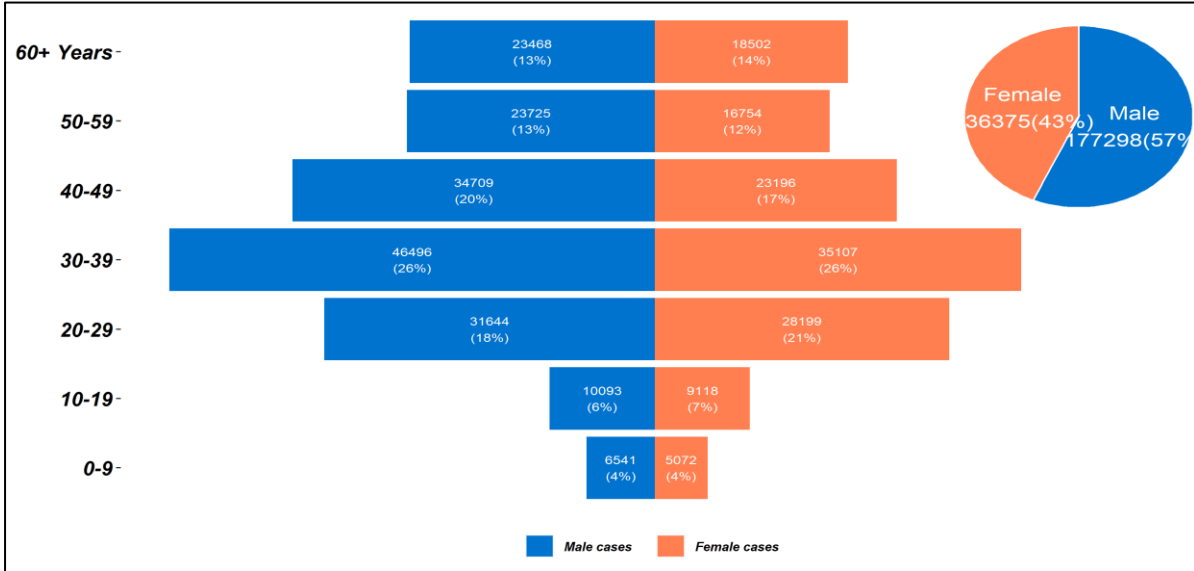


Figure 6: Age and Sex Distribution of COVID-19 Cases Kenya

A total of 5462 deaths have been reported so far, 3489 (64%) being males and 1973 (36%) were females (Figure 7).

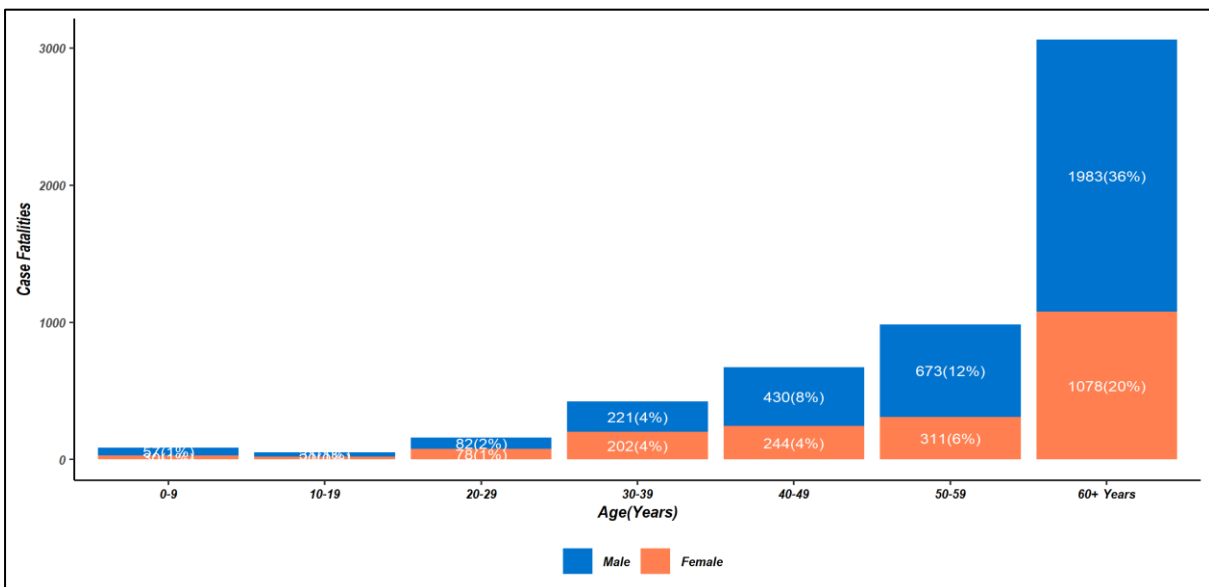


Figure 7: Distribution of Case Fatalities by Age and Sex



1.7 Trends of health care workers

Among the cases who had their occupation filled in, a cumulative of 12,401 health professionals (67 new cases) and 53 mortalities (No new deaths) have been reported in all the 47 counties.

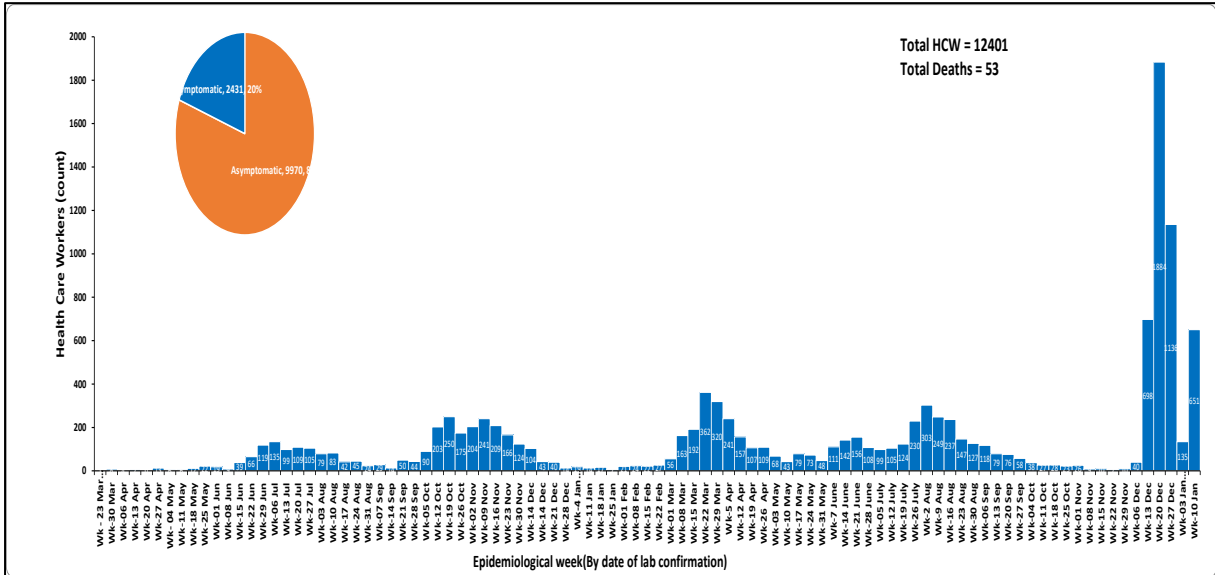


Figure 8: Covid-19 cases among health care workers

1.8 Figure 9 shows cases among health care workers by county

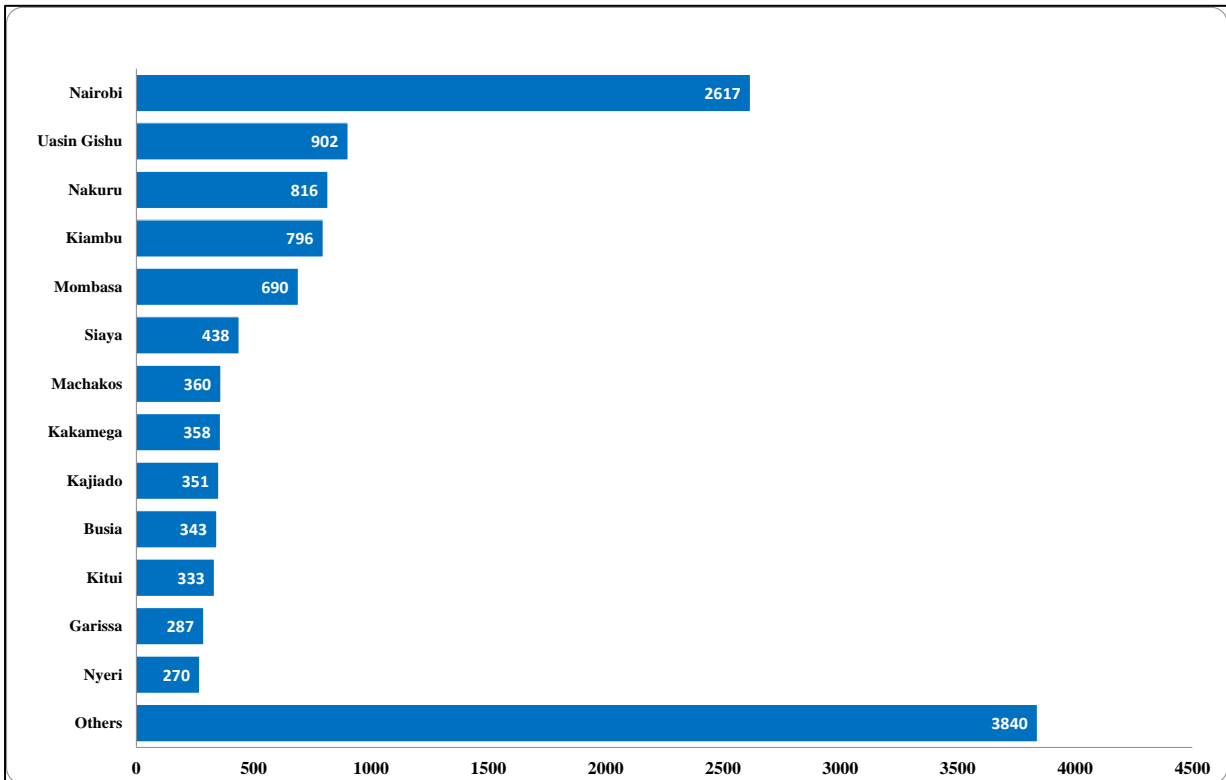


Figure 9: Health care workers cases by counties

Other counties reporting health care workers cases include – Kilifi (262), Kisumu(254), Migori (210), Turkana (208), Meru (207), Taita Taveta(198), Makueni(197), Kisii (179), Bungoma(169), Homa Bay(163), Murang’a(162), Nyandarua (161), Laikipia (147), Tharaka Nithi(133), Kirinyaga(132), West Pokot(128), Nandi(126), Kericho(110), Narok(93), Lamu(72), Embu(71), Isiolo(62), Marsabit (56), Tana River (49), Baringo(42), Bomet(41), Vihiga (37), Elgeyo Marakwet(34), Wajir(30), Kwale (25), Mandera(25), Trans Nzoia(23), Samburu (19), Nyamira (15).

1.9 Distribution of Confirmed COVID-19 Cases by County and Transmission Classification

Of the **313677** cases, 126992 (40%) are from Nairobi County followed by Kiambu County with 19857 (6%) as shown in Table 1.

Table 1: Distribution of confirmed COVID-19 Cases by County and transmission classification

County	Imported	Local
Nairobi	585	120722
Kiambu	37	18907
Mombasa	452	16567
Nakuru	39	15476
Uasin Gishu	32	9646
Kisumu	19	7229
Machakos	12	7214
Kajiado	50	7202
Kilifi	20	6479
Busia	177	6179
Siaya	3	5612
Nyeri	2	5371
Kericho	2	5361
Kitui	2	4587
Murang'a	1	4076
Meru	0	3778
Kakamega	9	3751
Kisii	6	3138
Bungoma	5	2989

County	Imported	Local
Laikipia	2	2947
Makueni	3	2872
Migori	22	2802
Nyandarua	2	2772
Garissa	5	2509
Embu	0	2445
Turkana	22	2350
Trans Nzoia	1	2200
Nandi	0	2164
Kirinyaga	1	2095
Homabay	6	1918
Taita Taveta	9	1835
Baringo	1	1562
Nyamira	0	1529
Bomet	0	1448
Narok	2	1285
Tharaka Nithi	0	1167
Kwale	16	1145
Vihiga	2	1007
Marsabit	0	898
Lamu	0	742
Isiolo	2	734
West Pokot	0	707
Elgeyo Marakwet	0	492
Tana River	0	385
Mandera	5	379
Samburu	0	308
Wajir	17	278



1.10 Map of Kenya showing COVID-19 attack rate by County per 100,000 population

Nairobi City County has the highest attack rate of 2888.1 per 100,000 population followed by Mombasa County at 1453.4 per 100,000 population (Figure 10).

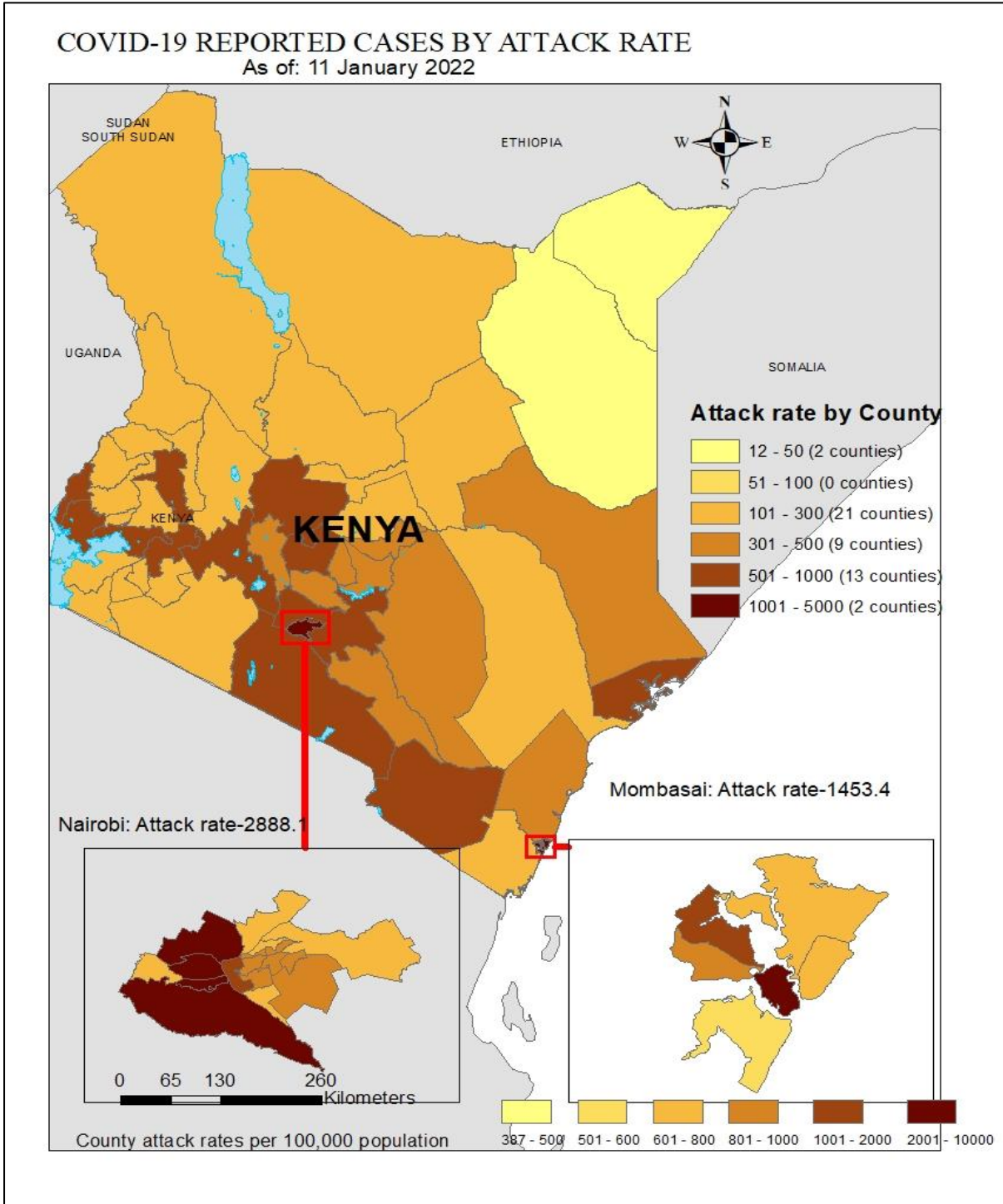


Figure 10: County Attack Rate per 100,000 Population



1.11 Map of Kenya showing COVID-19 caseload by County

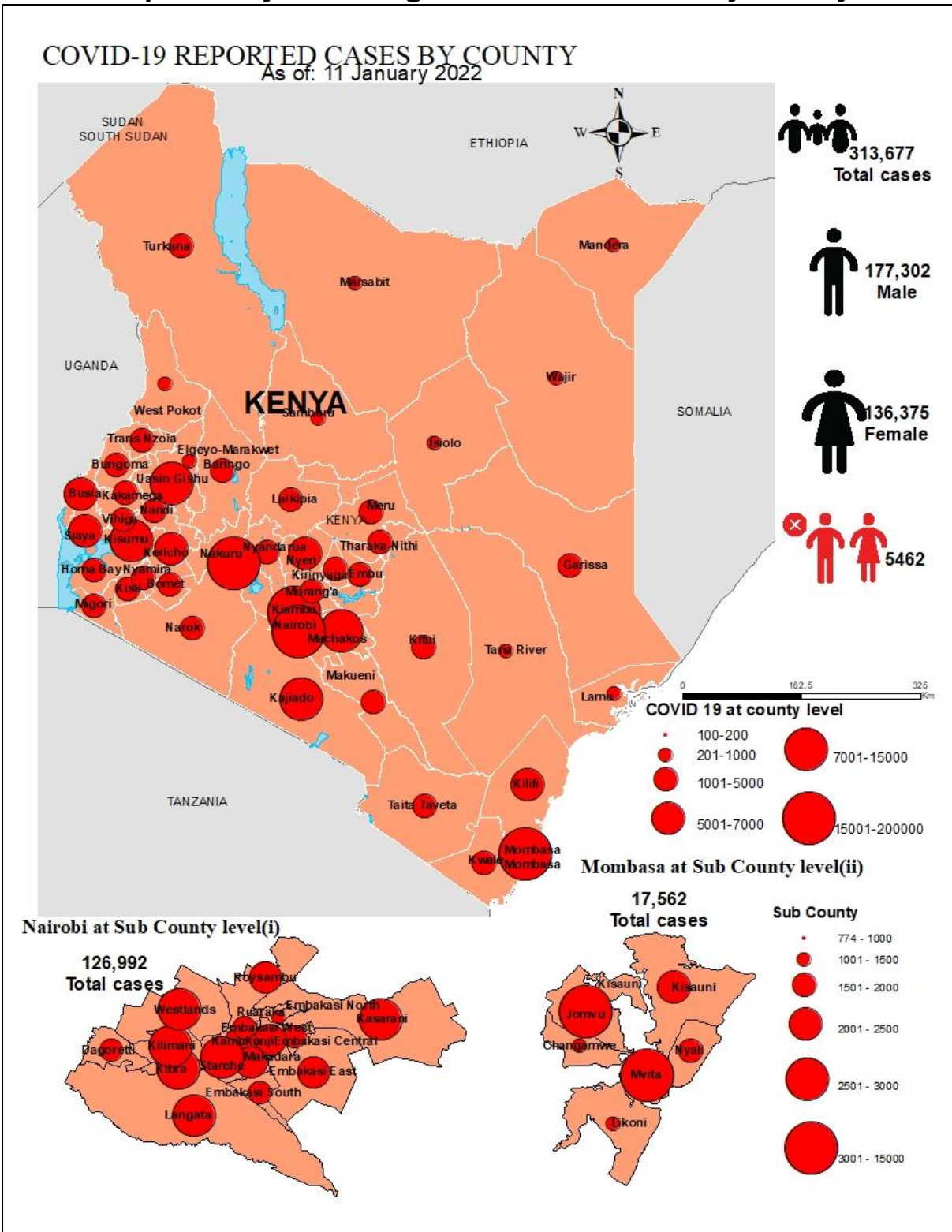


Figure 11: County Attack Rate per 100,000 Population

1.12 Kenya COVID-19 Vaccination Updates



				
Total Vaccinated dose1	6,047,125		Male 2,947,012 (49%)	Female:3,119,692(51%)
Fully Vaccinated	4,486,533		2,269,381 (51.0%)	2,215,341(49%)

The Kenya Ministry of Health launched the National COVID-19 vaccinations on the 5th March 2021 after receiving **1,120,000** doses of the AstraZeneca Vaccine through the COVID-19 Vaccines Global Access (COVAX) facility. As of 9th January 2022, a total of **6,047,125 persons** were vaccinated with the 1st dose and **4,486,533 persons** were fully vaccinated, targeting frontline workers, teachers, security officers, and those above 58 years of age. 51% of those vaccinated with the 1st dose were females and 49% were male. 51% of those fully vaccinated were males and 49% were female. Others (intersex/transgender) constituted 2,474 in the 1st dose and 1,811 were fully vaccinated. (Figure 12).

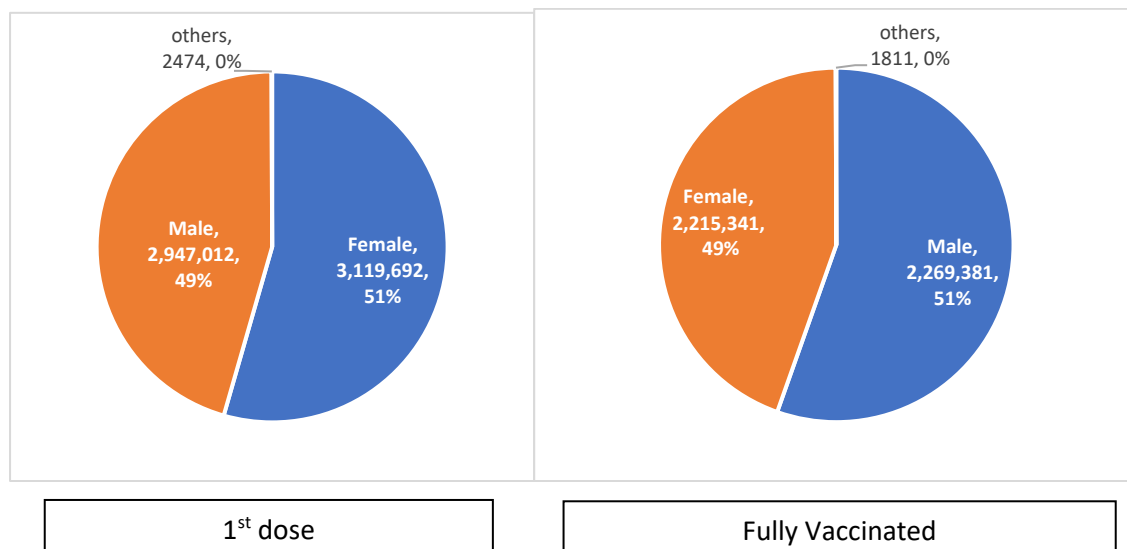


Figure 12: Sex Distribution of persons Vaccinated

The highest proportion of the population fully vaccinated was in Nairobi County at 35.4% and the least was in Tana River County (3.9%) (Table 2).

Table 2: Distribution of 2nd doses and proportion of fully Vaccinated by County

County	Vaccinations dose 2	Target population above 18 years	Proportion of fully vaccinated population	County	Vaccinations dose 2	Target population above 18 years	Proportion of fully vaccinated population
Nairobi	1,082,005	3,052,494	35.40%	Elgeyo Marakwet	30,572	243,690	12.50%
Nyeri	167,633	510,028	32.90%	Meru	115,922	949,186	12.20%
Laikipia	81,285	306,448	26.50%	Makueni	69,134	584,379	11.80%
Kiambu	380,767	1,623,545	23.50%	Baringo	35,819	338,937	10.60%
Kakamega	213,114	982,838	21.70%	Nandi	47,391	492,652	9.60%
Taita Taveta	41,345	213,335	19.40%	Busia	44,176	465,190	9.50%
Uasin Gishu	131,065	693,570	18.90%	Samburu	13,527	145,608	9.30%
Muranga	126,570	675,364	18.70%	Migori	49,030	557,657	8.80%
Nyandarua	69,162	376,776	18.40%	Kisii	61,079	697,445	8.80%
Machakos	162,422	905,172	17.90%	Kwale	36,528	451,261	8.10%
Kirinyaga	73,561	413,708	17.80%	Isiolo	10,342	133,358	7.80%
Nakuru	223,992	1,273,265	17.60%	Homa Bay	46,077	608,326	7.60%
Kisumu	110,745	656,147	16.90%	Kitui	47,019	624,506	7.50%
Mombasa	134,846	804,202	16.80%	Marsabit	13,095	219,170	6.00%
Vihiga	54,189	329,317	16.50%	Garissa	23,722	399,358	5.90%
Embu	64,757	395,980	16.40%	Kilifi	46,584	784,567	5.90%
Kajiado	107,629	663,201	16.20%	West Pokot	16,732	283,727	5.90%
Bungoma	133,404	843,735	15.80%	Mandera	19,939	341,857	5.80%
Trans Nzoia	74,762	518,077	14.40%	Bomet	26,839	465,963	5.80%
Lamu	11,173	83,433	13.40%	Narok	30,371	548,229	5.50%
Tharaka Nithi	32,913	246,699	13.30%	Wajir	16,441	337,296	4.90%
Kericho	67,588	508,980	13.30%	Turkana	21,770	468,878	4.60%
Nyamira	44,232	341,397	13.00%	Tana River	5,855	151,051	3.90%
Siaya	69,410	536,031	12.90%	Total	4,486,533	27,246,033	16.50%

The proportion of health care workers who were fully vaccinated as of 9th January 2022 was highest at 83.0% as shown below.

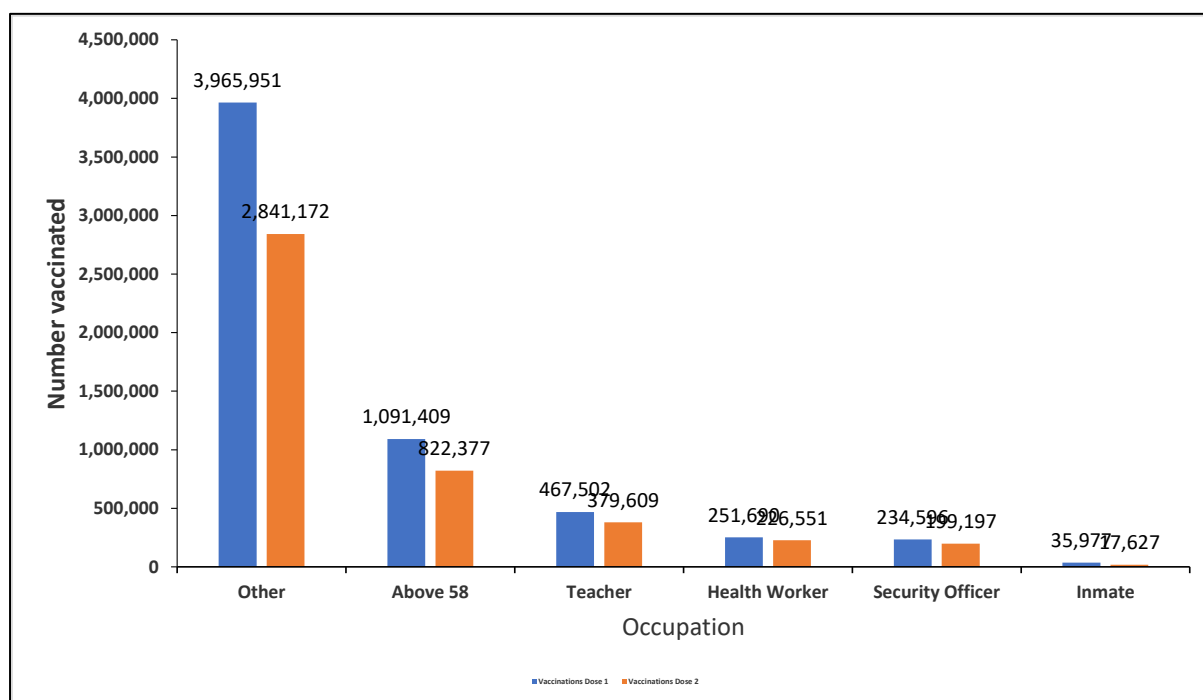


Figure 13: Distribution of persons Vaccinated with 1st and 2nd dose by Occupation

Table 3: Distribution of fully vaccinated persons by priority group

Priority group	Johnson and Johnson	Dose 2 uptake	Fully vaccinated (Dose 2 uptake+Johnson & Johnson)	Dose 1 uptake	% Fully vaccinated
Health Workers	17,763	208,788	226,551	251,690	83.00%
Security Officers	24,830	174,367	199,197	234,596	74.30%
Teachers	35,082	344,527	379,609	467,502	73.70%
Above 58 years old	147,819	674,558	822,377	1,091,409	61.80%
Others	829,732	2,011,440	2,841,172	3,965,951	50.70%
Inmates	3,834	13,793	17,627	35,977	38.30%
Total	1,059,060	3,427,473	4,486,533	6,047,125	56.70%

Sixteen (16.5) percent of the phase 1 targets have so far been fully vaccinated with 108.7% of the health care workers Vaccinated for dose 2 (Table 4).

Table 4: Progress towards meeting targets: Kenya, 9th January 2022

Occupation	Fully Vaccinated	Target	% Fully Vaccinated
Health Workers	226,551	208,418	108.7%
Security Officers	199,197		
Teachers	379,609	330,671	114.8%
Above 58 years old	822,377	2,594,585	31.7%
Others	2,841,172		
Inmates	17,627	49,000	36.0%
Total	4,486,533	27,246,033	16.5%

Vaccine LOGISTICS 9th January 2022

Table 5: Current Vaccines Stocks Status

Location	Quantities (Doses)
National (CVS Kitengela)	7,338,710
Total distributed to 9 regional depots	15,941,110
Total	23,279,820 Inclusive: AstraZeneca (GOK- 1,020,000, India-100,000, MOH South Sudan- 72,000, Denmark-2,769,100, UK-817,040, Greece-180,000, Canada, US-459,300, Latvia-55,200, Poland-211,200, Slovakia- 160,000, COVAX France- 401,900, Netherlands-2,292,000, COVAX Germany-2,592,000, Argentina- 400,000) J&J (GOK-1,804,800, Germany- 4,291,200, USA- 1,176,000) Moderna (USA-1,760,780, Spain-564,480) PFIZER (USA-2,822,040) Sinopharm (China-200,000).

Table 6: Vaccine Doses Dispensed as of 9th January 2022

Vaccine	Total doses Administered
Total 1st doses (All vaccines)	6,047,125
Fully vaccinated	4,486,533
Total doses (All Vaccines + Sputnik)	10,609,955
First Dose 15-18 years (Pfizer)	24,326
% of adults fully vaccinated	16.5%

2.0 KEY ACTIONS

2.1 Coordination

- Response efforts continue to be coordinated through a whole government and multi-agency approach following Executive Order No. 2 of 2021 issued by His Excellency the President on 26th March 2021.
- The National Emergency Response Committee that was constituted following the executive order meets regularly to provide policy directions on response efforts towards the COVID-19 outbreak.
- The Public Health Emergency Operations Centre is fully activated and continues to coordinate response measures as well as provide daily situation reports informing planning.

2.2 Case Management and Infection Prevention & Control

- In the last 24 hours, 3,320 COVID-19 patients (Health Facility: 329, HBIC: 2,991) recovered and were discharged bringing the total number of recoveries and discharges for COVID- 271,893 (Facility: 50,412, HBIC: 221,481).
- Currently, there are 42 COVID-19 cases admitted in the intensive care unit; 1 on supplemental oxygen; 41 on ventilatory support, and 0 under observation.
- The total number of health workers infected is **12,401 (67 new cases)** with 53 mortalities (**no new death**) reported in all 47 counties.

2.3 Surveillance and laboratory and Point of Entry

- All alerts were responded to and contact tracing continued in all affected counties.
- The Diagnostic capacity in the Country has been scaled up. A total of eighty-eight (88) public and private laboratories in thirteen (13) counties (Nairobi, Kisumu, Mombasa, Kilifi, Wajir, Kericho, Uasin Gishu, Machakos, Busia, Nakuru, Kajiado, Trans Nzoia, and Mandera) are currently conducting confirmatory tests for COVID-19.
- In the last 24 hours, 6,945 samples were tested across various laboratories of which one thousand one hundred and five (1,105) samples turned positive for COVID-19. A total of 3,111,402 cumulative tests have so far been conducted.
- Mandatory screening of cargo vessel crew is ongoing at all points of entry to minimize the risk of importation of additional cases from other affected countries.
- Port Health Services at all points of entry and other stakeholders' measures have been put in place to ensure the safety of travelers and traders in line with Ministry of Health guidelines on social distancing, hand washing, sanitizing, and enhanced temperature screening, disinfection of facilities, and sensitization of staff.

3.0 KEY CHALLENGES

- Stigmatization and discrimination on COVID-19 suspects affecting willingness to seek testing and management of cases likely to lead to further spread of the disease.
- Commodity insecurity at the sub-national level of both personal protective equipment and laboratory reagents at COVID – 19 testing laboratories.
- There is a shortage of sampling kits across several counties affecting testing of suspected cases, contacts, and limiting overall access to testing.
- Inadequate resources to facilitate critical response pillars limiting response capacity in detecting, investigating, contact tracing, and follow-up of cases.

4.0 NEXT STEPS

- Strengthen enforcement of public health measures across the country as directed by the President.
- There is a need to streamline cross-country coordination to address issues around the borders especially those counties bordering neighboring countries.
- Strengthening the contact tracing in the sub-counties.
- Strengthen commodity security of personal protective equipment at the sub-national level.
- Strengthen diagnostic quality assurance system

Emergency Operation Center:

Telephone: 0729 471 414, 0732 353 535, 0800 721316(Toll Free)

COVID-19 Call center: *719# (short message only), 719 (Audio)

COVID-19 Dashboard: https://khro.health.go.ke/#/covid_19_tracker

Email: manager.eockenya@gmail.com