



COVID-19 OUTBREAK IN KENYA

DAILY SITUATION REPORT - 667

1. KEY HIGHLIGHTS

- One thousand one hundred and seventy-five (1175)** new confirmed COVID-19 cases were reported in the last 24 hours bringing the total number of confirmed cases in Kenya to **315665 cases** as of 13 January 2022. Counties reporting new cases are **Nairobi (459), Kisii (92), Mombasa (71), Nyeri (49), Turkana (49), Siaya (48), Kiambu (40), Murang'a (37), Uasin Gishu (37), Kakamega (36), Nakuru (32), Nyandarua (25), Kisumu (20), Makueni (14), Nandi (13), Baringo (12), Kilifi (12), Kericho (11), Kirinyaga (10), Migori (10), Meru (9), Homa Bay (8), Elgeyo Marakwet (7), Embu (7), Kajiado (7), Tharaka Nithi (7), Bungoma (6), Busia (5), Garissa (5), Machakos (5), Laikipia (4), Marsabit (4), Isiolo (3), Kwale (3), Nyamira (3), Vihiga (3), West Pokot (3), Bomet (2), Narok (2), Tana River (2), Trans Nzoia (2) and Taita Taveta (1).**
- Three (3) deaths have been reported over the last 24 hrs.** The total number of deaths reported since the beginning of the outbreak is **5472, case fatality rate (CFR) is 1.7%**
- As of today, **forty-seven (47) counties** have reported cases namely: Nairobi (127809), Kiambu (19912), Mombasa (17651), Nakuru (16531), Uasin Gishu (10300), Kisumu (7715), Machakos (7564), Kajiado (7544), Kilifi (6879), Busia (6475), Siaya (6166), Nyeri (5717), Kericho (5687), Kitui (4762), Murang'a (4371), Kakamega (4086), Meru (4036), Kisii (3378), Migori (3285), Laikipia (3147), Bungoma (3064), Makueni (3011), Nyandarua (2939), Garissa (2617), Turkana (2605), Embu (2583), Nandi (2312), Trans Nzoia (2279), Kirinyaga (2218), Homa bay (2021), Taita Taveta (2007), Baringo (1625), Nyamira (1625), Bomet (1574), Narok (1355), Kwale (1291), Tharaka Nithi (1218), Vihiga (1064), Marsabit (961), West Pokot (814), Lamu (766), Isiolo (756), Elgeyo Marakwet (511), Mandera (413), Tana River (407), Samburu (312), Wajir (300).
- Nairobi city** and **Mombasa** Counties have the highest attack rates of COVID-19 at **2906.7** and **1460.8** per **100,000** population respectively when compared to **663.7/100,000** for the whole country and need enhanced interventions. In addition, the COVID-19 outbreak has so far spread to **100%** of the counties in the country. **Risk communication, laboratory testing, and contact tracing** have been identified as the key challenges
- Two hundred and ninety-nine thousand two hundred and forty-seven - 299247 (95%) of the 315665 confirmed cases** are local transmissions.
- In the last 24 hours, 10,073 samples were tested across various laboratories of which one thousand, one hundred and seventy-five (1175) samples turned positive for COVID-19. A total of 3,127,480 cumulative tests have so far been conducted.**
- In the last 24 hours, 3,025 COVID-19 patients (Health Facility: 188, HBIC: 2,837) recovered and were discharged bringing the total number of recoveries and discharges for COVID- 279,044 (Facility: 50,758, HBIC: 228,286).**

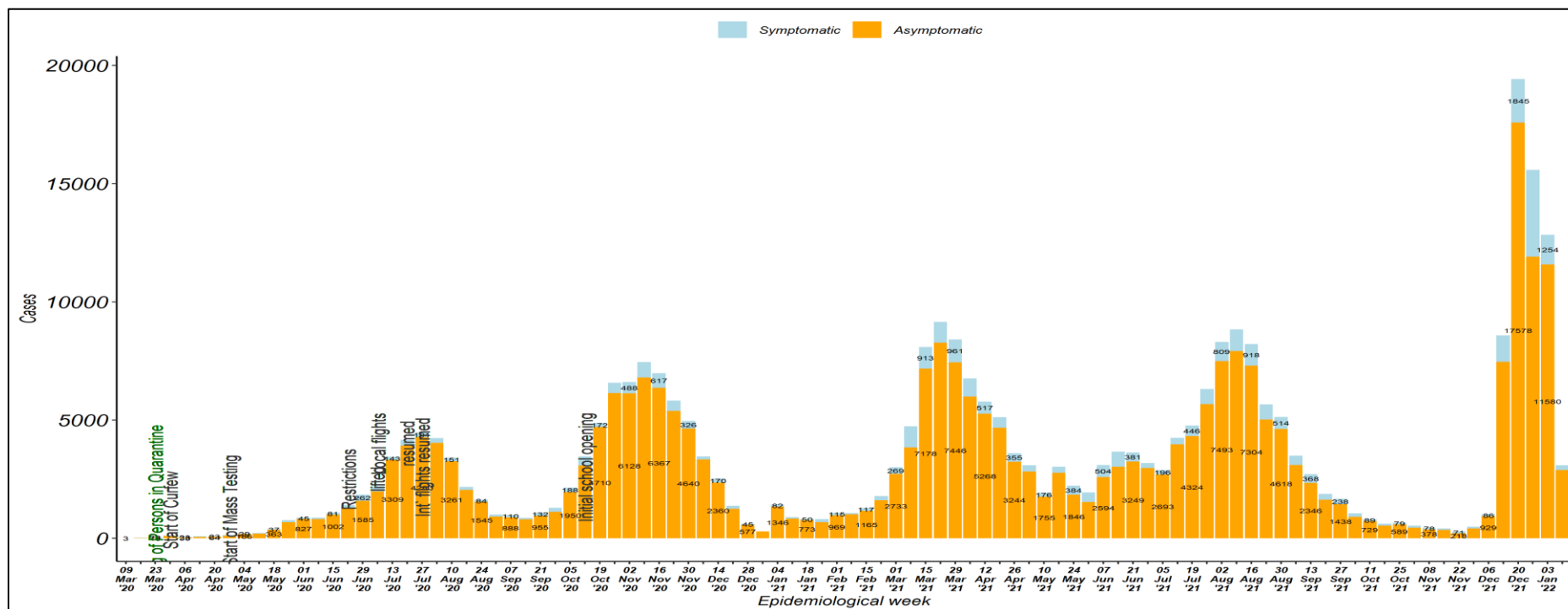
Total Cases
=315665

Male = 178297
Female = 137368

Deaths
=5472

1.1 Epidemiology

Since 13 March 2020 when the first case was confirmed in Kenya, a total of **315665** confirmed cases and **5472** deaths giving a case fatality rate of **1.7%** have been line-listed. Of these, 299247 cases (95%) were local transmissions and 16416 (5%) are imported cases. Figure 1 below shows the trends of cases.





1.2 The trends of COVID-19 deaths

A total of **5472** cases died since the beginning of the outbreak giving a case fatality rate of **1.7%**. Figure 2 shows the trend of COVID-19 deaths by week.

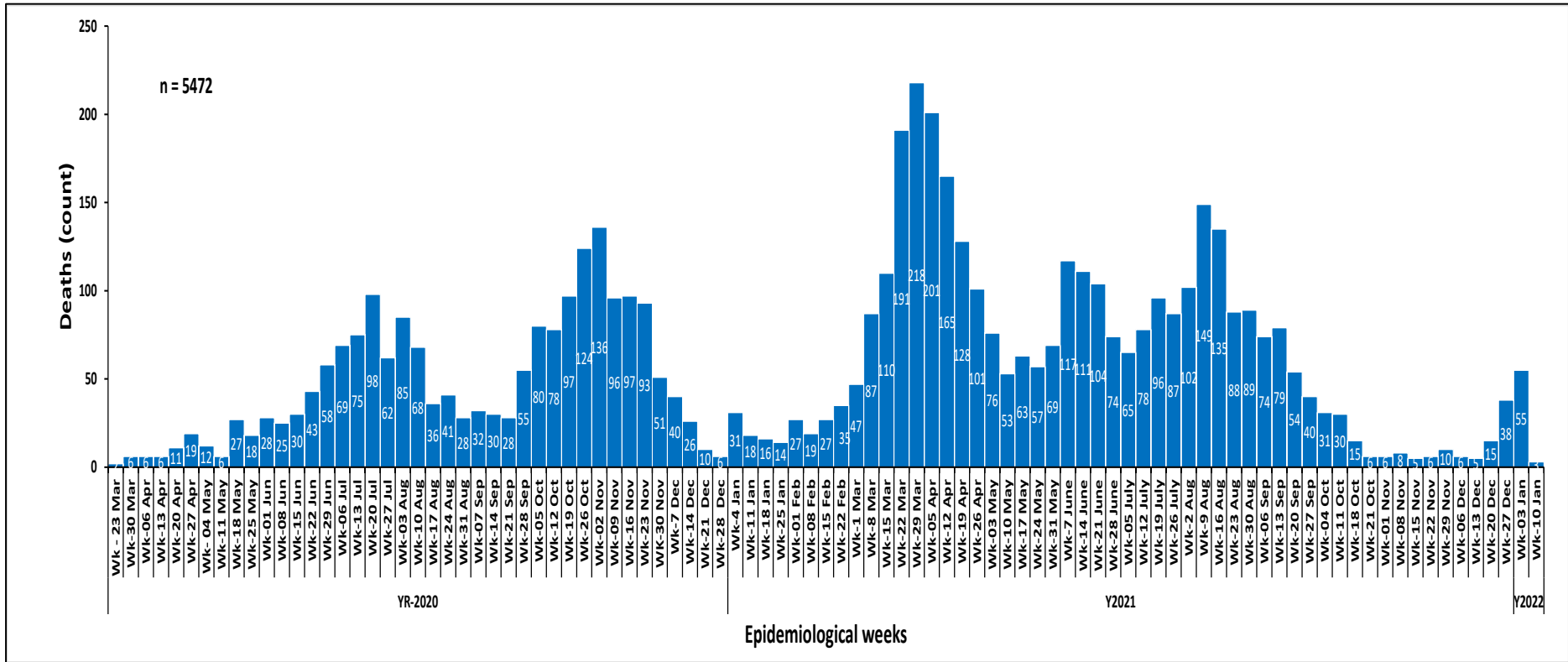


Figure 2: Fatalities by week



1.3 National caseload vs Nairobi County caseload

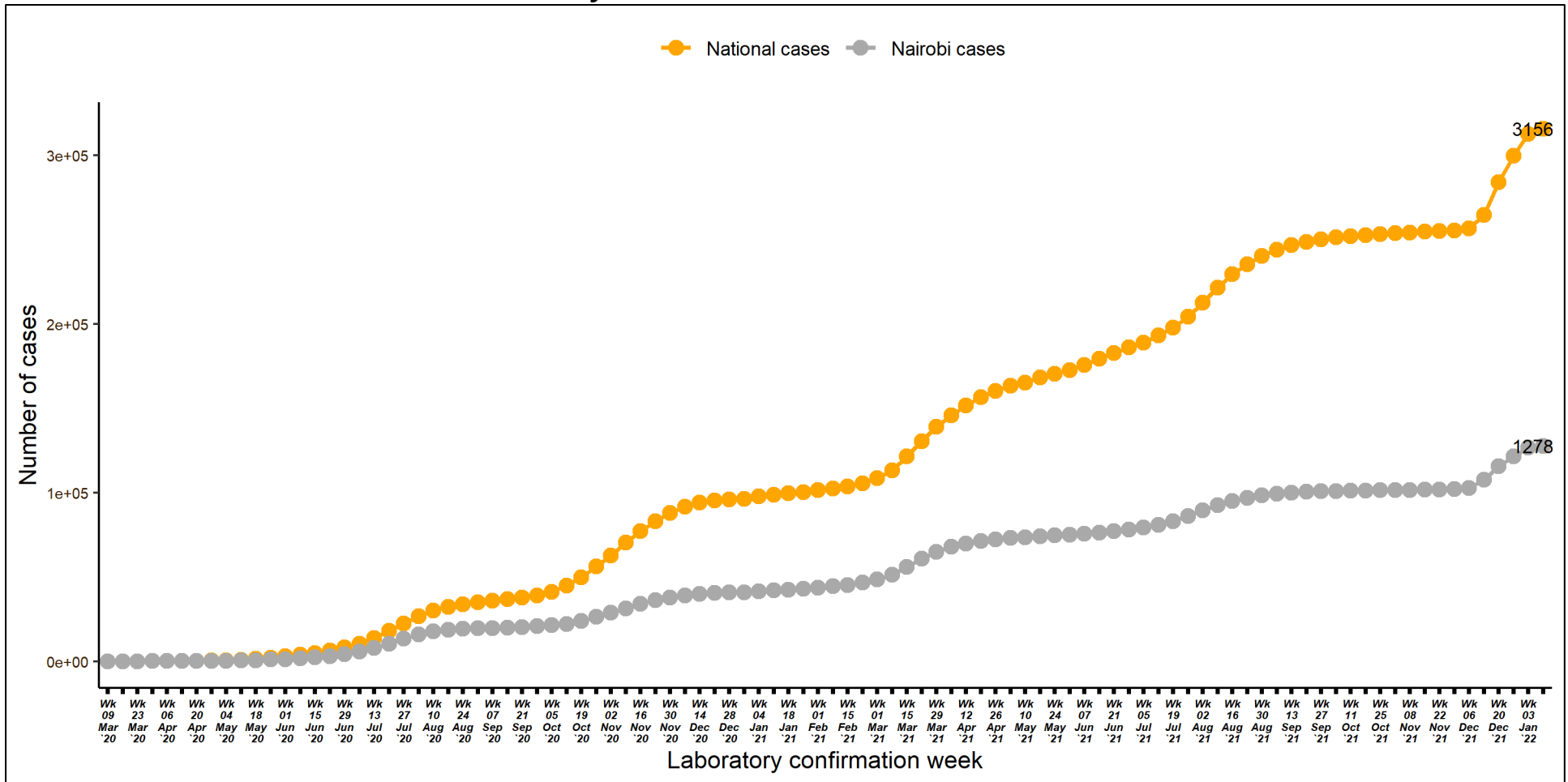


Figure 3: Cumulative cases by week of confirmation. Comparing National cases and Nairobi County cases



1.4 Laboratory testing

WHO recommends that one of the indicators that the pandemic is under control, is when < 5% of samples tested are positive for COVID-19 for the past 2 weeks, assuming that surveillance for suspected cases is comprehensive and testing rate of suspect cases, is optimum at least 1/1000 population/week. The laboratory test rate currently stands at **65,752.7** samples per 1,000,000 people. Figure 4 shows the weekly testing rate/1000 population/week.

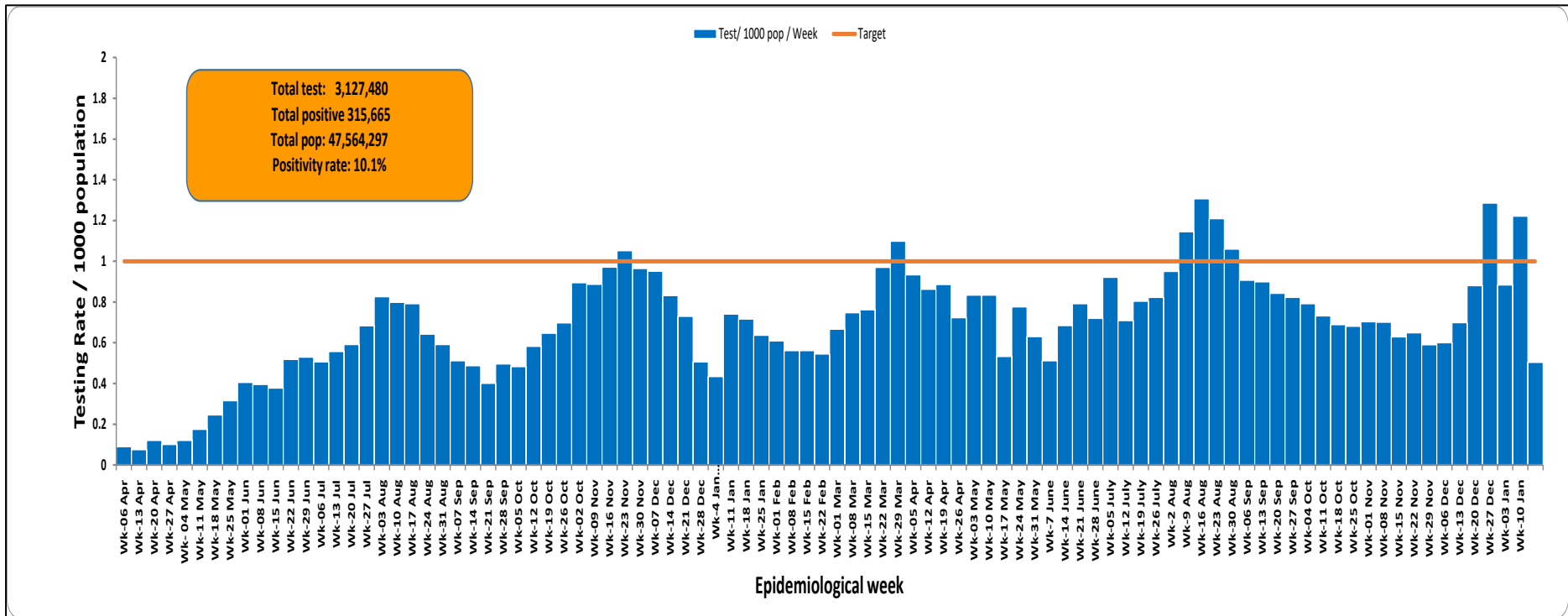


Figure 4: Laboratory Tests Conducted by Date Results were Shared



1.5 Distribution of Confirmed COVID-19 Cases by Presentation and Presentation of Symptoms among Symptomatic cases

Of the **315665** confirmed cases, 32195(10%) presented with symptoms (Figure 5). Cough (52%) and Fever (33%) were predominant presenting symptoms.

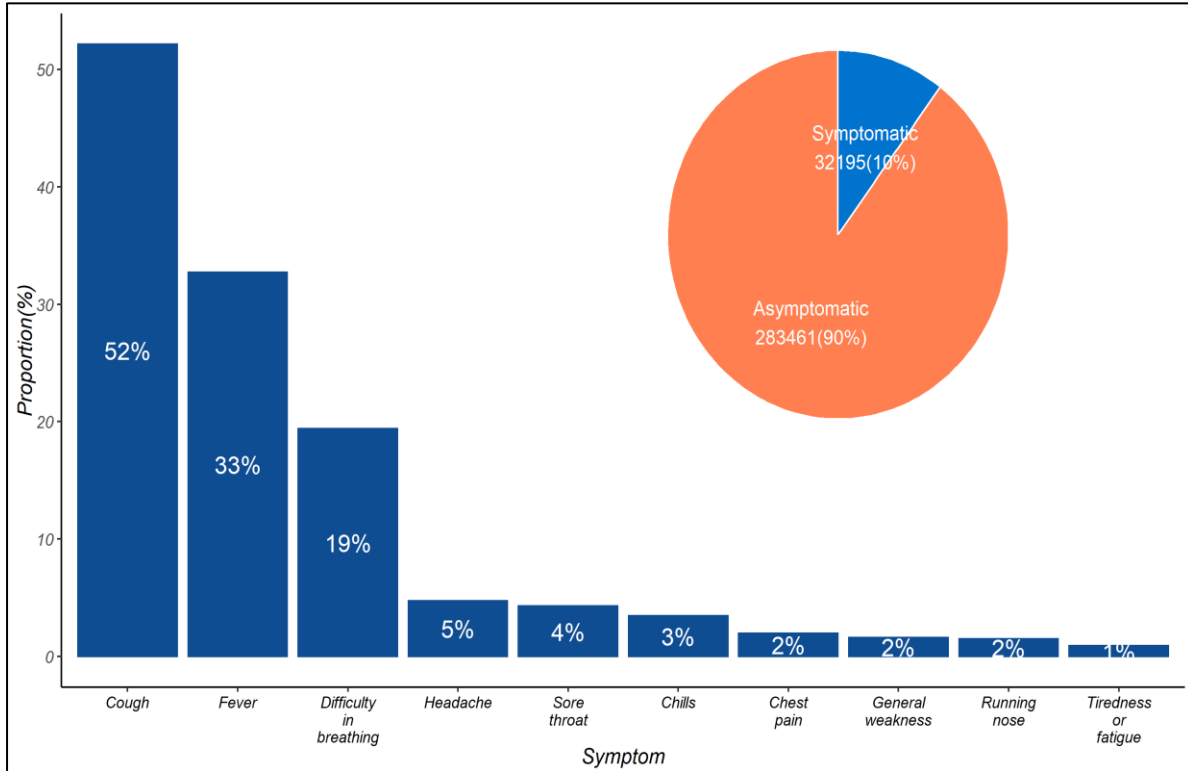


Figure 5: Distribution of Presenting Symptoms among Symptomatic COVID-19 Cases



1.6 Age and Sex Distribution of COVID Confirmed Cases and Deaths

One hundred and seventy-eight thousand two hundred and ninety-seven (56%) are males and 137368 (44%) are females. Most of the cases; 82004 (26%), are in the age group of 30-39 years. Figure 6 below shows the age and sex distribution of COVID-19 cases.

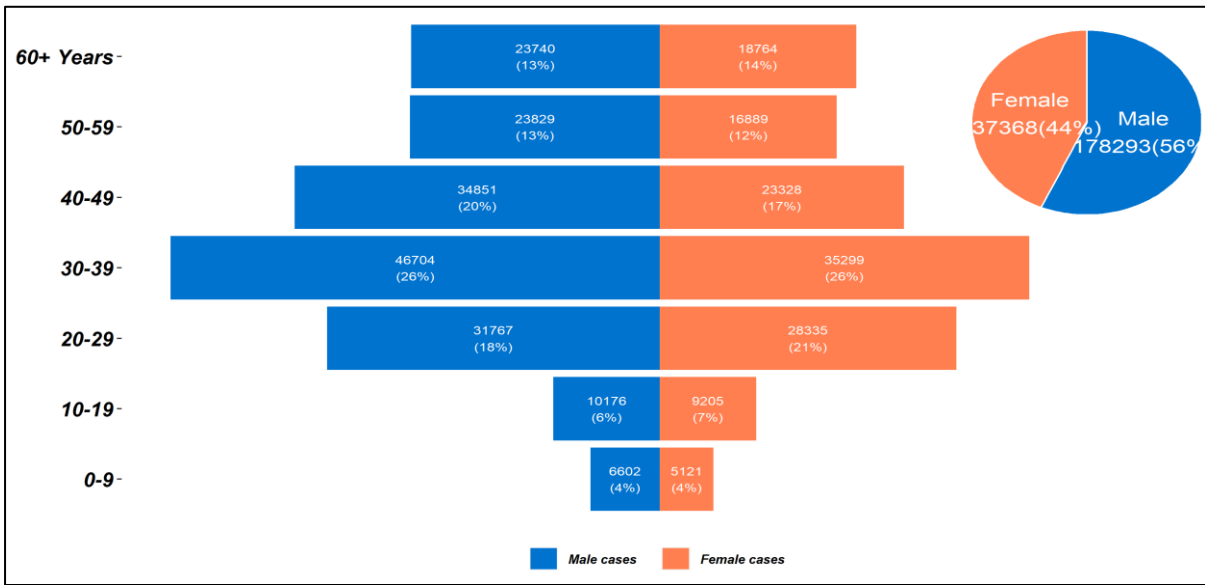


Figure 6: Age and Sex Distribution of COVID-19 Cases Kenya

A total of 5471 deaths have been reported so far, 3495 (64%) being males and 1976 (36%) being females (Figure 7).

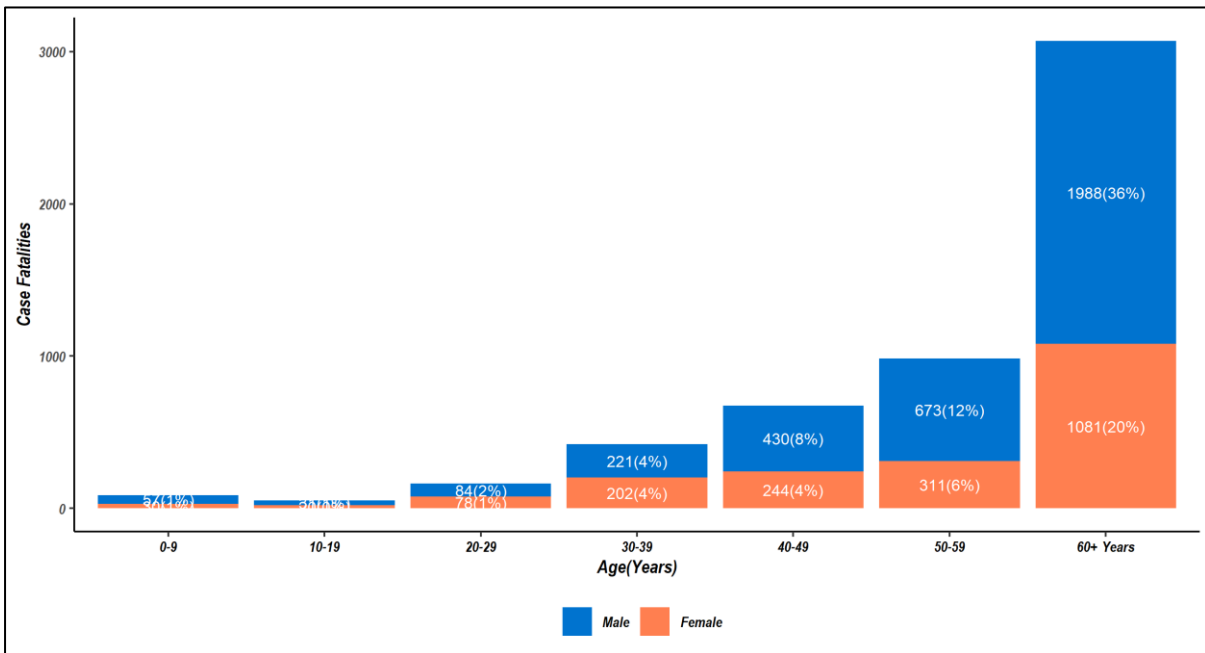


Figure 7: Distribution of Case Fatalities by Age and Sex

1.7 Trends of health care workers

Among the cases who had their occupation filled in, a cumulative of 12458 health professionals (38 new cases) and 53 mortalities (No new deaths) have been reported in all the 47 counties.

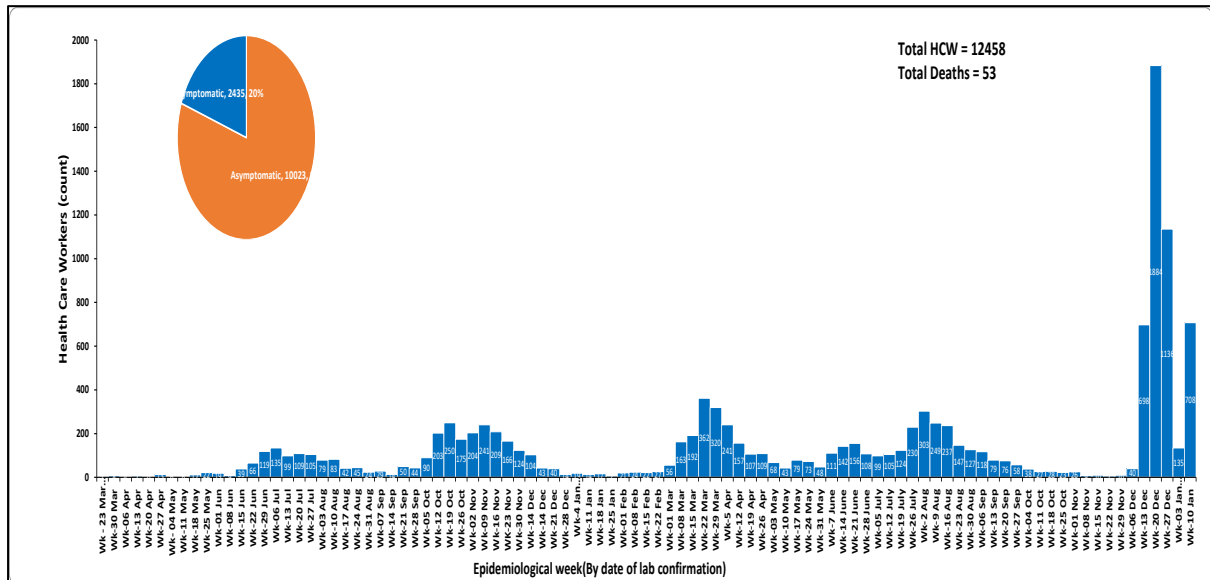


Figure 8: Covid-19 cases among health care workers

1.8 Figure 9 shows cases among health care workers by county

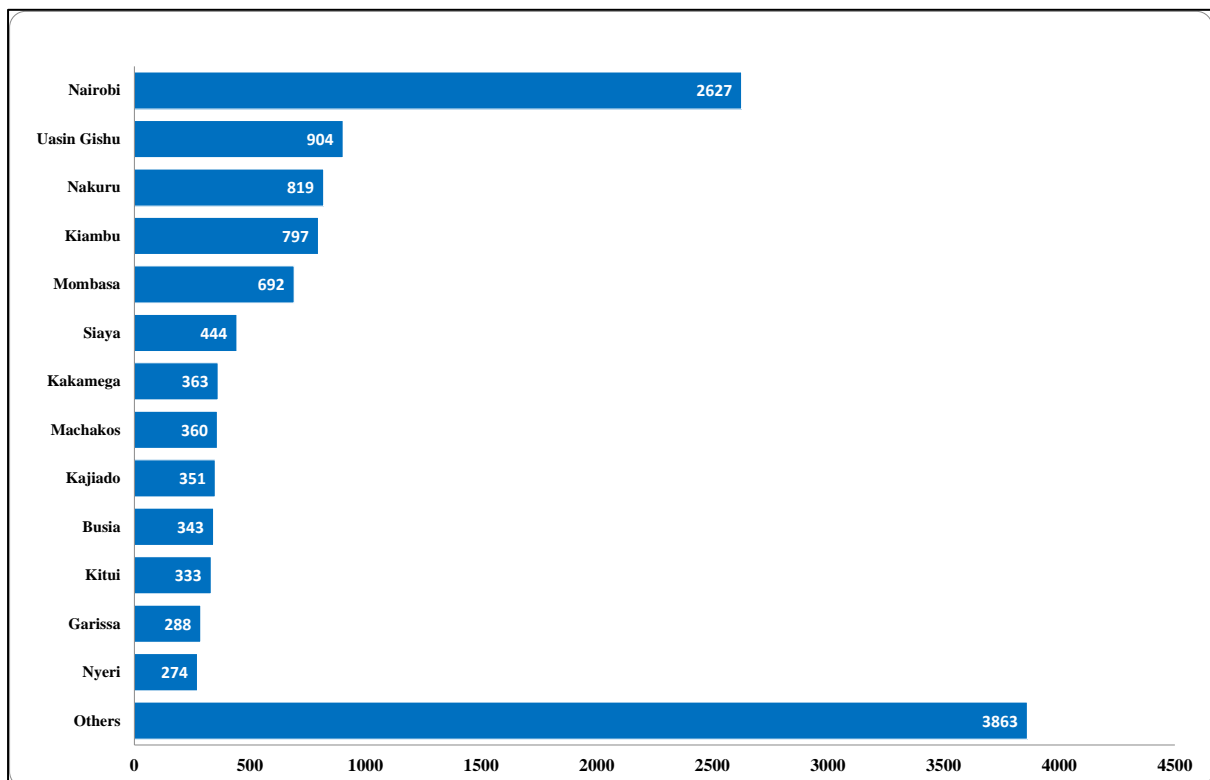


Figure 9: Health care workers cases by counties

Other counties reporting health care workers cases include – Kilifi (264), Kisumu(255), Migori (211), Turkana (211), Meru (209), Taita Taveta(198), Makueni(198), Kisii (182), Bungoma(169), Murang’a(165), Homa Bay(163), Nyandarua (161), Laikipia (148), Tharaka Nithi(134), Kirinyaga(132), West Pokot(128), Nandi(128), Kericho(110), Narok(93), Lamu(72), Embu(71), Isiolo(63), Marsabit (56), Tana River (50), Baringo(43), Bomet(41), Vihiga (37), Elgeyo Marakwet(34), Wajir(30), Kwale (25), Mandera(25), Trans Nzoia(23), Samburu (19), Nyamira (15).

1.9 Distribution of Confirmed COVID-19 Cases by County and Transmission Classification

Of the **315665** cases, 127809 (40%) are from Nairobi County followed by Kiambu County with 19912 (6%) as shown in Table 1.

Table 1: Distribution of confirmed COVID-19 Cases by County and transmission classification

County	Imported	Local
Nairobi	586	121538
Kiambu	37	18962
Mombasa	452	16656
Nakuru	39	15537
Uasin gishu	32	9700
Kisumu	19	7269
Machakos	12	7224
Kajiado	50	7212
Kilifi	20	6511
Busia	177	6190
Siaya	3	5733
Nyeri	2	5422
Kericho	2	5376
Kitui	2	4600
Murang'a	1	4122
Kakamega	9	3798
Meru	0	3792
Kisii	6	3233
Bungoma	5	2997

County	Imported	Local
Laikipia	2	2975
Makueni	3	2893
Migori	22	2822
Nyandarua	2	2816
Garissa	5	2520
Embu	0	2465
Turkana	22	2401
Trans nzoia	1	2206
Nandi	0	2183
Kirinyaga	1	2105
Homabay	6	1930
Taita taveta	9	1837
Baringo	1	1578
Nyamira	0	1532
Bomet	0	1517
Narok	2	1290
Tharaka nithi	0	1174
Kwale	16	1150
Vihiga	2	1012
Marsabit	0	920
Lamu	0	749
Isiolo	2	737
West pokot	0	711
Elgeyo marakwet	0	498
Tana river	0	387
Mandera	5	379
Samburu	0	309
Wajir	17	278



1.10 Map of Kenya showing COVID-19 attack rate by County per 100,000 population

Nairobi City County has the highest attack rate of 2906.7 per 100,000 population followed by Mombasa County at 1460.8 per 100,000 population (Figure 10).

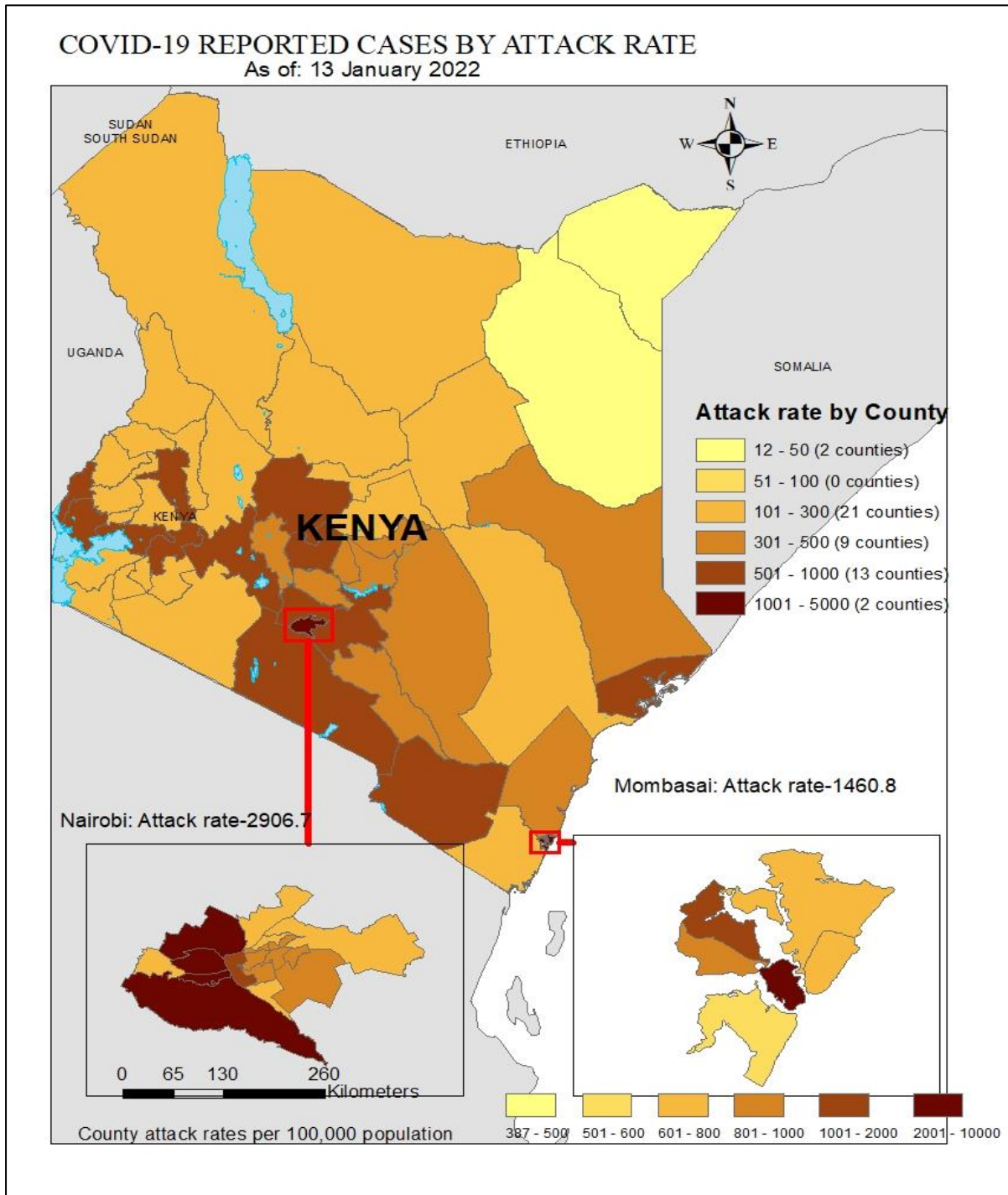


Figure 10: County Attack Rate per 100,000 Population



1.11 Map of Kenya showing COVID-19 caseload by County

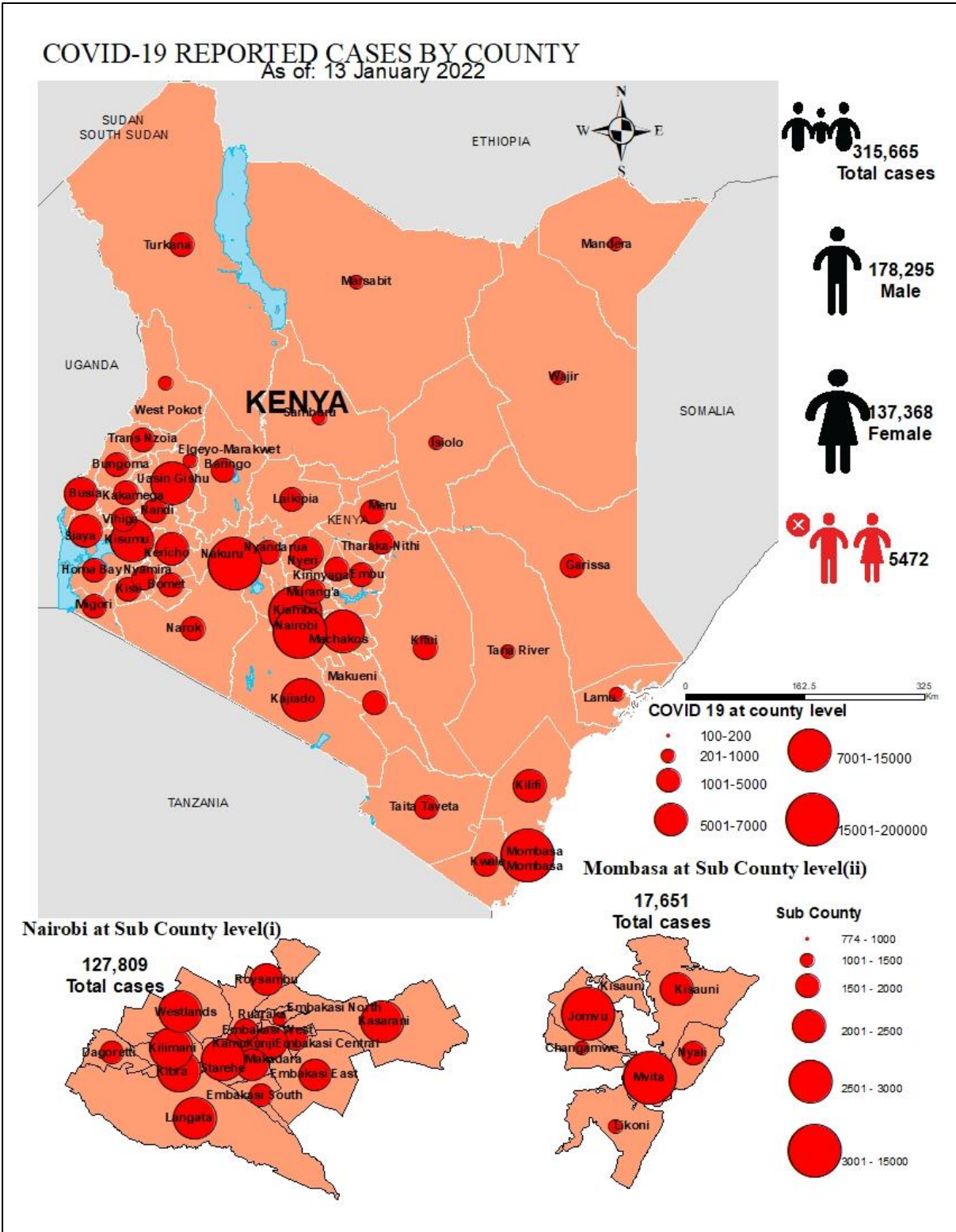
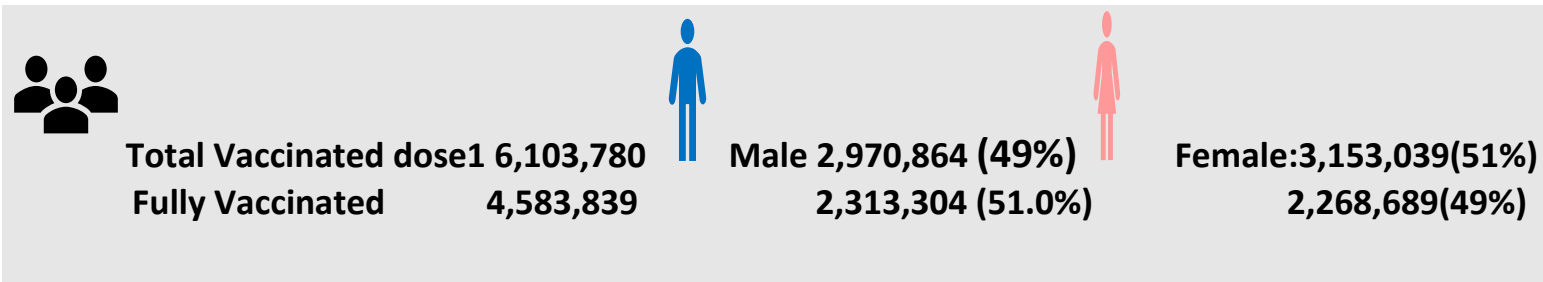


Figure 11: County Attack Rate per 100,000 Population

1.12 Kenya COVID-19 Vaccination Updates



The Kenya Ministry of Health launched the National COVID-19 vaccinations on the 5th March 2021 after receiving **1,120,000** doses of the AstraZeneca Vaccine through the COVID-19 Vaccines Global Access (COVAX) facility. As of 11th January 2022, a total of **6,103,780 persons** were vaccinated with the 1st dose and **4,583,839 persons** being fully vaccinated, targeting frontline workers, teachers, security officers, and those above 58 years of age. 51% of those vaccinated with the 1st dose were females and 49% were male. 51% of those fully vaccinated were males and 49% were female. Others (intersex/transgender) constituted 2,501 in the 1st dose and 1,846 were fully vaccinated. (Figure 12).

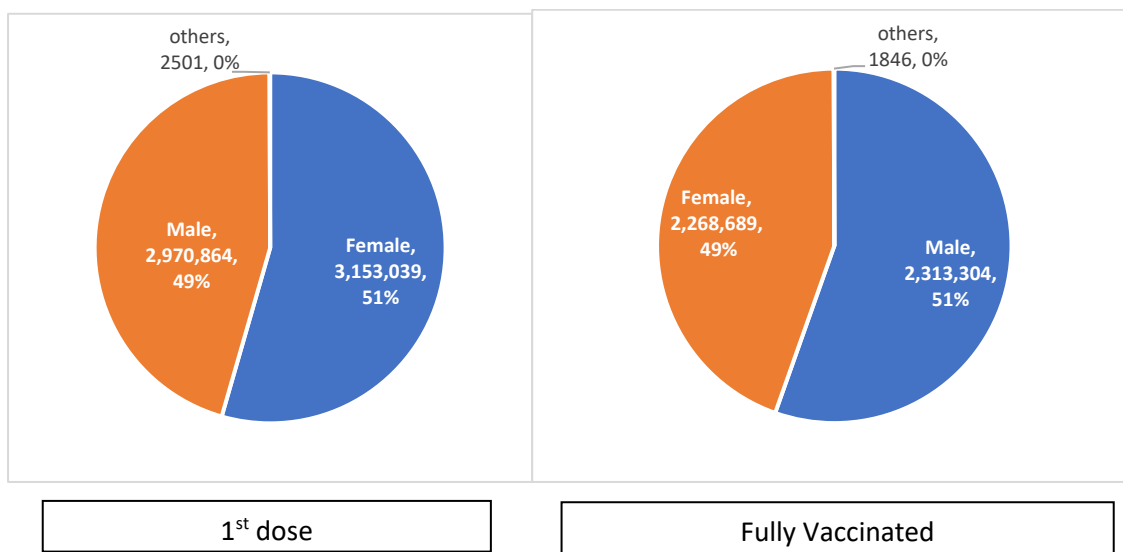


Figure 12: Sex Distribution of persons Vaccinated

The highest proportion of the population fully vaccinated was in Nairobi County at 35.9% and the least was in Tana River County (3.9%) (Table 2).

Table 2: Distribution of 2nd doses and proportion of fully Vaccinated by County

County	Vaccinations dose 2	Target population above 18 years	Proportion of fully vaccinated population	County	Vaccinations dose 2	Target population above 18 years	Proportion of fully vaccinated population
Nairobi	1,094,907	3,052,494	35.90%	Elgeyo Marakwet	31,243	243,690	12.80%
Nyeri	169,612	510,028	33.30%	Meru	120,355	949,186	12.70%
Laikipia	82,781	306,448	27.00%	Makueni	70,963	584,379	12.10%
Kiambu	386,909	1,623,545	23.80%	Baringo	36,527	338,937	10.80%
Kakamega	220,313	982,838	22.40%	Nandi	49,831	492,652	10.10%
Taita Taveta	42,544	213,335	19.90%	Busia	46,567	465,190	10.00%
Uasin Gishu	134,158	693,570	19.30%	Samburu	13,672	145,608	9.40%
Muranga	128,738	675,364	19.10%	Migori	51,125	557,657	9.20%
Nyandarua	70,662	376,776	18.80%	Kisii	62,977	697,445	9.00%
Machakos	165,813	905,172	18.30%	Kwale	37,165	451,261	8.20%
Kirinyaga	74,884	413,708	18.10%	Homa Bay	48,036	608,326	7.90%
Nakuru	230,321	1,273,265	18.10%	Isiolo	10,527	133,358	7.90%
Kisumu	112,660	656,147	17.20%	Kitui	47,929	624,506	7.70%
Vihiga	56,344	329,317	17.10%	West Pokot	17,242	283,727	6.10%
Mombasa	136,879	804,202	17.00%	Marsabit	13,286	219,170	6.10%
Embu	66,103	395,980	16.70%	Garissa	24,208	399,358	6.10%
Kajiado	109,352	663,201	16.50%	Kilifi	47,398	784,567	6.00%
Bungoma	138,984	843,735	16.50%	Bomet	27,862	465,963	6.00%
Trans Nzoia	77,021	518,077	14.90%	Mandera	20,159	341,857	5.90%
Tharaka Nithi	33,976	246,699	13.80%	Narok	31,224	548,229	5.70%
Kericho	69,381	508,980	13.60%	Wajir	16,600	337,296	4.90%
Lamu	11,246	83,433	13.50%	Turkana	22,282	468,878	4.80%
Nyamira	45,636	341,397	13.40%	Tana River	5,952	151,051	3.90%
Siaya	71,485	536,031	13.30%	Total	4,583,539	27,246,033	16.80%

The proportion of health care workers who were fully vaccinated as of 11th January 2022 was highest at 83.0% as shown below.

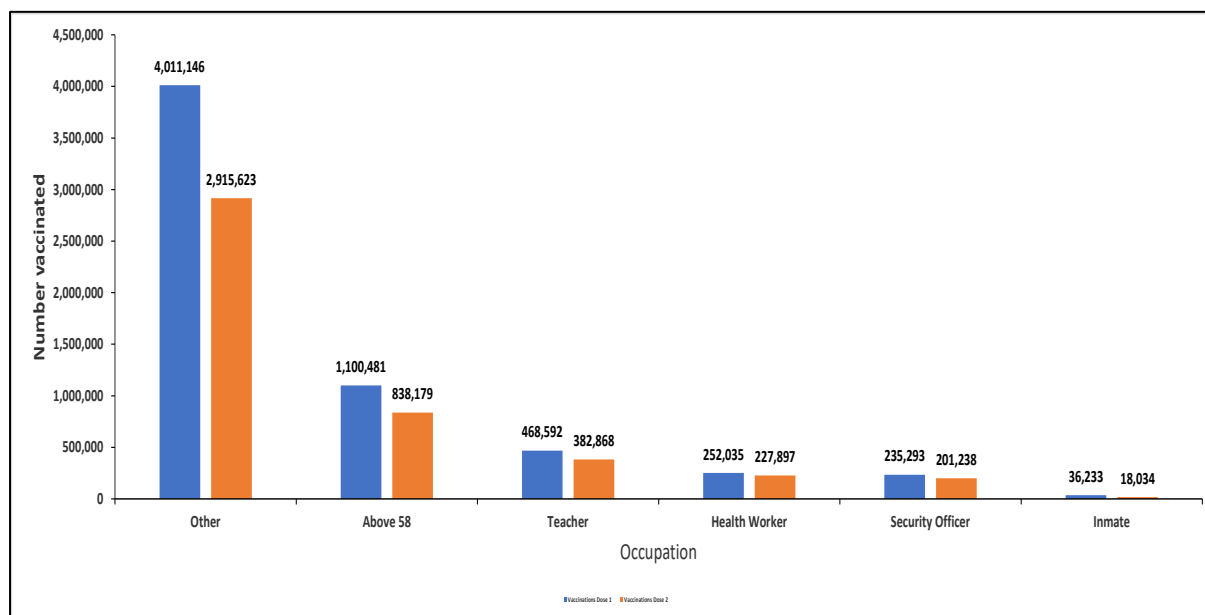


Figure 13: Distribution of persons Vaccinated with 1st and 2nd dose by Occupation

Table 3: Distribution of fully vaccinated persons by priority group

Priority group	Johnson and Johnson	Dose 2 uptake	Fully vaccinated (Dose 2 uptake+Johnson & Johnson)	Dose 1 uptake	% Fully vaccinated
Health Workers	18,176	209,721	227,897	252,035	83.20%
Security Officers	25,613	175,625	201,238	235,293	74.60%
Teachers	36,126	346,742	382,868	468,592	74.00%
Above 58 years old	153,399	684,780	838,179	1,100,481	62.20%
Others	860,263	2,055,360	2,915,623	4,011,146	51.20%
Inmates	4,078	13,956	18,034	36,233	38.50%
Total	1,097,655	3,486,184	4,583,839	6,103,780	57.10%

Sixteen (16.8) percent of the phase 1 targets have so far been fully vaccinated with 109.3% of the health care workers Vaccinated for dose 2 (Table 4).

Table 4: Progress towards meeting targets: Kenya, 11th January 2022

Occupation	Fully Vaccinated	Target	% Fully Vaccinated
Health Workers	227,897	208,418	109.3%
Security Officers	201,238		
Teachers	382,868	330,671	115.8%
Above 58 years old	838,179	2,594,585	32.3%
Others	2,915,623		
Inmates	18,034	49,000	36.8%
Total	4,583,839	27,246,033	16.8%

Vaccine LOGISTICS 11th January 2022

Table 5: Current Vaccines Stocks Status

Location	Quantities (Doses)
National (CVS Kitengela)	7,338,710
Total distributed to 9 regional depots	15,941,110
Total	23,279,820 Inclusive: AstraZeneca (GOK- 1,020,000, India-100,000, MOH South Sudan- 72,000, Denmark-2,769,100, UK-817,040, Greece-180,000, Canada, US-459,300, Latvia-55,200, Poland-211,200, Slovakia- 160,000, COVAX France- 401,900, Netherlands-2,292,000, COVAX Germany-2,592,000, Argentina- 400,000) J&J (GOK-1,804,800, Germany- 4,291,200, USA- 1,176,000) Moderna (USA-1,760,780, Spain-564,480) PFIZER (USA-2,822,040) Sinopharm (China-200,000).

Table 6: Vaccine Doses Dispensed as of 11th January 2022

Vaccine	Total doses Administered
Total 1st doses (All vaccines)	6,103,780
Fully vaccinated	4,583,839
Total doses (All Vaccines + Sputnik)	10,687,619
First Dose 15-18 years (Pfizer)	24,910
% of adults fully vaccinated	16.8%

2.0 KEY ACTIONS

2.1 Coordination

- Response efforts continue to be coordinated through a whole government and multi-agency approach following Executive Order No. 2 of 2021 issued by His Excellency the President on 26th March 2021.
- The National Emergency Response Committee that was constituted following the executive order meets regularly to provide policy directions on response efforts towards the COVID-19 outbreak.
- The Public Health Emergency Operations Centre is fully activated and continues to coordinate response measures as well as provide daily situation reports informing planning.

2.2 Case Management and Infection Prevention & Control

- In the last 24 hours, 3,025 COVID-19 patients (Health Facility: 188, HBIC: 2,837) recovered and were discharged bringing the total number of recoveries and discharges for COVID- 279,044 (Facility: 50,758, HBIC: 228,286).
- Currently, there are 49 COVID-19 cases admitted in the intensive care unit; 4 on supplemental oxygen; 45 on ventilatory support, and 0 under observation.
- The total number of health workers infected is **12,458 (38 new cases)** with 53 mortalities (**no new death**) reported in all 47 counties.

2.3 Surveillance and laboratory and Point of Entry

- The Diagnostic capacity in the Country has been scaled up. A total of eighty-eight (88) public and private laboratories in thirteen (13) counties (Nairobi, Kisumu, Mombasa, Kilifi, Wajir, Kericho, Uasin Gishu, Machakos, Busia, Nakuru, Kajiado, Trans Nzoia, and Mandera) are currently conducting confirmatory tests for COVID-19.
- In the last 24 hours, 10,073 samples were tested across various laboratories of which one thousand, one hundred and seventy-five (1175) samples turned positive for COVID-19. A total of 3,127,480 cumulative tests have so far been conducted.
- Mandatory screening of cargo vessel crew is ongoing at all points of entry to minimize the risk of importation of additional cases from other affected countries.
- Port Health Services at all points of entry and other stakeholders' measures have been put in place to ensure the safety of travelers and traders in line with Ministry of Health guidelines on social distancing, hand washing, sanitizing, and enhanced temperature screening, disinfection of facilities, and sensitization of staff.

3.0 KEY CHALLENGES

- Stigmatization and discrimination on COVID-19 suspects affecting willingness to seek testing and management of cases likely to lead to further spread of the disease.
- Commodity insecurity at the sub-national level of both personal protective equipment and laboratory reagents at COVID – 19 testing laboratories.
- There is a shortage of sampling kits across several counties affecting testing of suspected cases, contacts, and limiting overall access to testing.
- Inadequate resources to facilitate critical response pillars limiting response capacity in detecting, investigating, contact tracing, and follow-up of cases.

4.0 NEXT STEPS

- Strengthen enforcement of public health measures across the country as directed by the President.
- There is a need to streamline cross-country coordination to address issues around the borders especially those counties bordering neighboring countries.
- Strengthening the contact tracing in the sub-counties.
- Strengthen commodity security of personal protective equipment at the sub-national level.
- Strengthen diagnostic quality assurance system

Emergency Operation Center:

Telephone: 0729 471 414, 0732 353 535, 0800 721316(Toll Free)

COVID-19 Call center: *719# (short message only), 719 (Audio)

COVID-19 Dashboard: https://khro.health.go.ke/#/covid_19_tracker

Email: manager.eockenya@gmail.com