



COVID-19 OUTBREAK IN KENYA

DAILY SITUATION REPORT - 668

1. KEY HIGHLIGHTS

- One thousand and thirty-five (1035)** new confirmed COVID-19 cases were reported in the last 24 hours bringing the total number of confirmed cases in Kenya to **316700 cases** as of 14 January 2022. Eight hundred and eleven (811) of the cases are Kenyans of which one (1) has a travel history. One thousand and thirty-four (1034) of the cases are local transmissions. Two hundred and twenty-four (224) of the cases are non-Kenyans. Counties reporting new cases are **Nairobi (369), Nakuru (89), Mombasa (82), Nyamira (47), Bungoma (42), Baringo (36), Kilifi (29), Siaya (29), Kitui (26), Kiambu (25), Nyeri (24), Kericho (23), Kakamega (21), Makueni (18), Trans Nzoia (18), Murang'a (16), Kajiado (14), Kisumu (13), Uasin Gishu (13), Embu (10), Laikipia (10), Homa Bay (8), Meru (8), Marsabit (7), Vihiga (7), Busia (6), Kisii (6), Kwale (6), Narok (6), Garissa (5), Machakos (4), West Pokot (4), Bomet (3), Elgeyo Marakwet (2), Migori (2), Nandi (2), Nyandarua (2), Isiolo (1), Samburu (1) and Taita Taveta (1).**
- Ten (10) deaths have been reported over the last 24 hrs.** The total number of deaths reported since the beginning of the outbreak is **5482, case fatality rate (CFR) is 1.7%**
- As of today, **forty-seven (47) counties** have reported cases namely: Nairobi (128178), Kiambu (19937), Mombasa (17733), Nakuru (16620), Uasin Gishu (10313), Kisumu (7728), Machakos (7568), Kajiado (7558), Kilifi (6908), Busia (6481), Siaya (6195), Nyeri (5741), Kericho (5710), Kitui (4788), Murang'a (4387), Kakamega (4107), Meru (4044), Kisii (3384), Migori (3287), Laikipia (3157), Bungoma (3106), Makueni (3029), Nyandarua (2941), Garissa (2622), Turkana (2605), Embu (2593), Nandi (2314), Trans Nzoia (2297), Kirinyaga (2218), Homa Bay (2029), Taita Taveta (2008), Nyamira (1672), Baringo (1661), Bomet (1577), Narok (1361), Kwale (1297), Tharaka Nithi (1218), Vihiga (1071), Marsabit (968), West Pokot (818), Lamu (766), Isiolo (757), Elgeyo Marakwet (514), Mandera (413), Tana River (407), Samburu (313), Wajir (300).
- Nairobi city** and **Mombasa** Counties have the highest attack rates of COVID-19 at **2915.1** and **1467.6** per **100,000** population respectively when compared to **665.8/100,000** for the whole country and need enhanced interventions. In addition, the COVID-19 outbreak has so far spread to **100%** of the counties in the country. **Risk communication, laboratory testing, and contact tracing** have been identified as the key challenges
- Two hundred and fifty-six thousand five hundred and twelve - 256512 (81%)** of the **316700 confirmed cases** are local transmissions.
- In the last 24 hours, 9337 samples were tested across various laboratories of which one thousand and thirty-five (1035) samples turned positive for COVID-19. A total of 3,136,817 cumulative tests have so far been conducted.**
- In the last 24 hours, 1,155 COVID-19 patients (Health Facility: 113, HBIC: 1,042) recovered and were discharged bringing the total number of recoveries and discharges for COVID- 280,199 (Facility: 50,871, HBIC: 229,328).**

Total Cases
=316700

Male = 178863
Female = 137837

Deaths
=5482

1.1 Epidemiology

Since 13 March 2020 when the first case was confirmed in Kenya, a total of **316700** confirmed cases and **5482** deaths giving a case fatality rate of **1.7%** have been line-listed. Of these, 256512 cases (81%) were local transmissions and 60187 (19%) are imported cases. Figure 1 below shows the trends of cases.

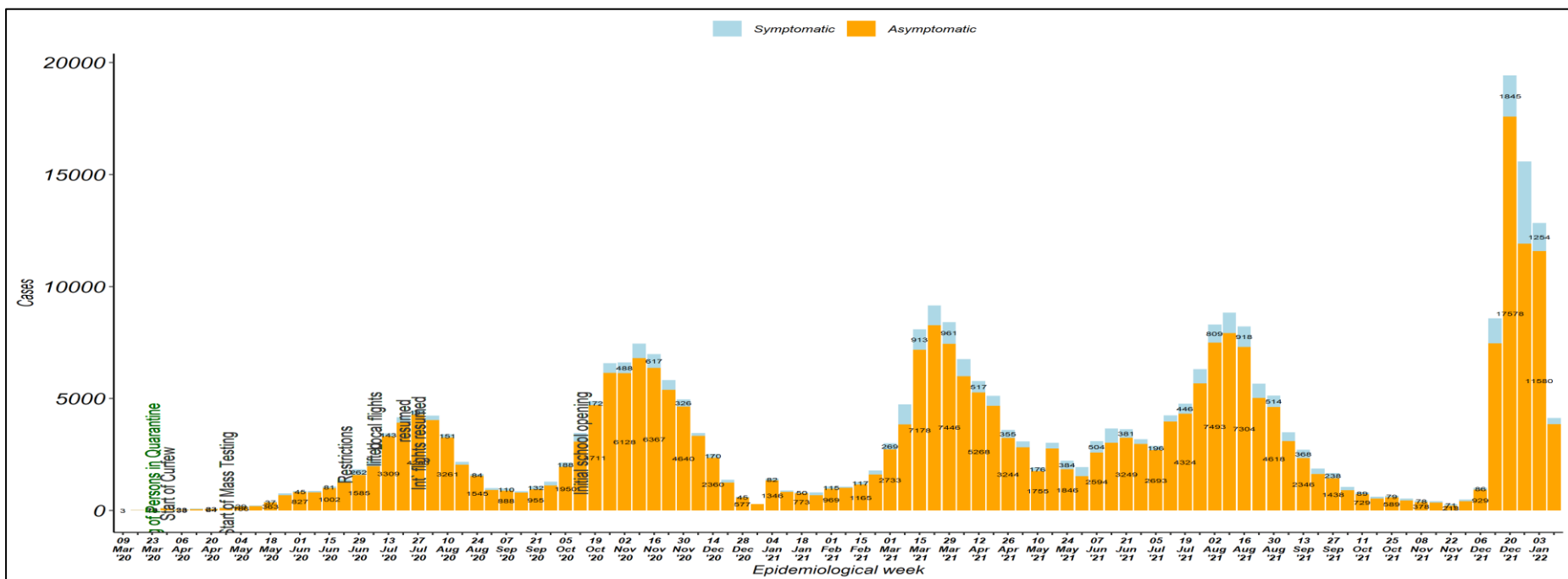


Figure 1: Trends of COVID-19 Outbreak Kenya



1.2 The trends of COVID-19 deaths

A total of **5482** cases died since the beginning of the outbreak giving a case fatality rate of **1.7%**. Figure 2 shows the trend of COVID-19 deaths by week.

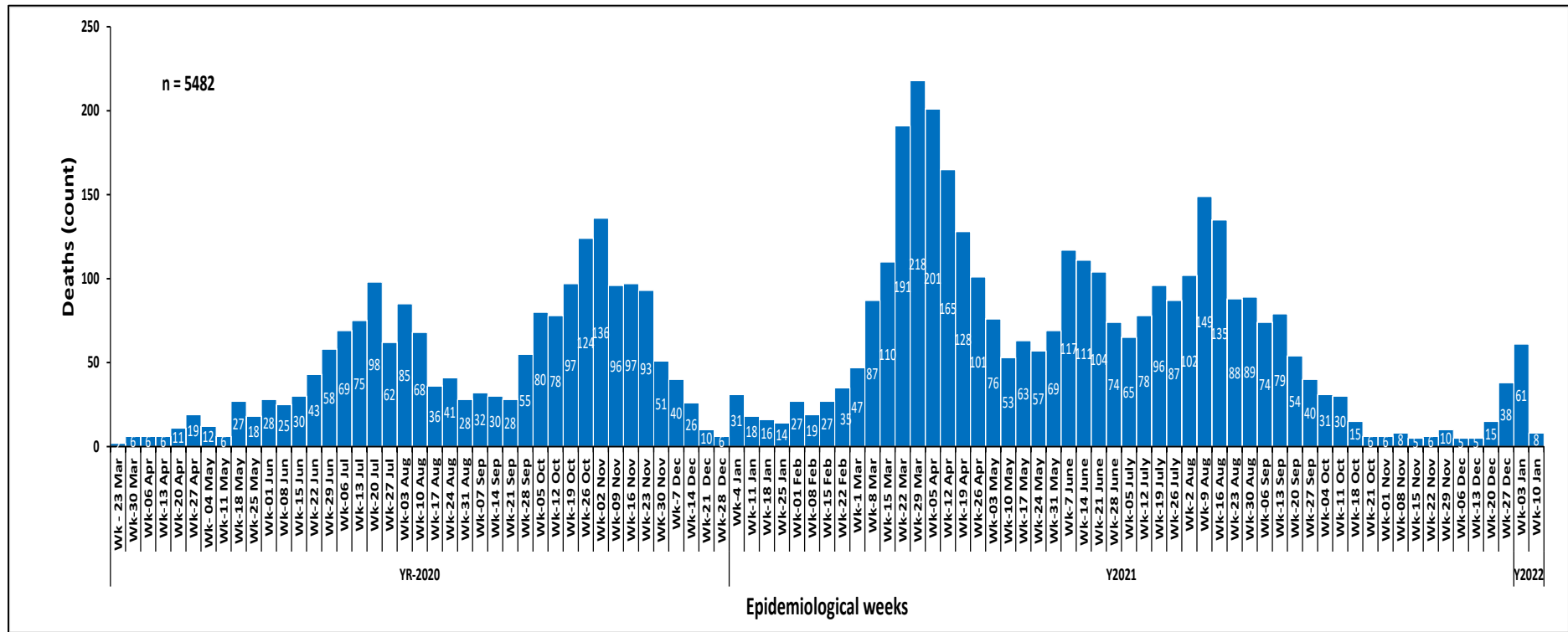


Figure 2: Fatalities by week



1.3 National caseload vs Nairobi county caseload

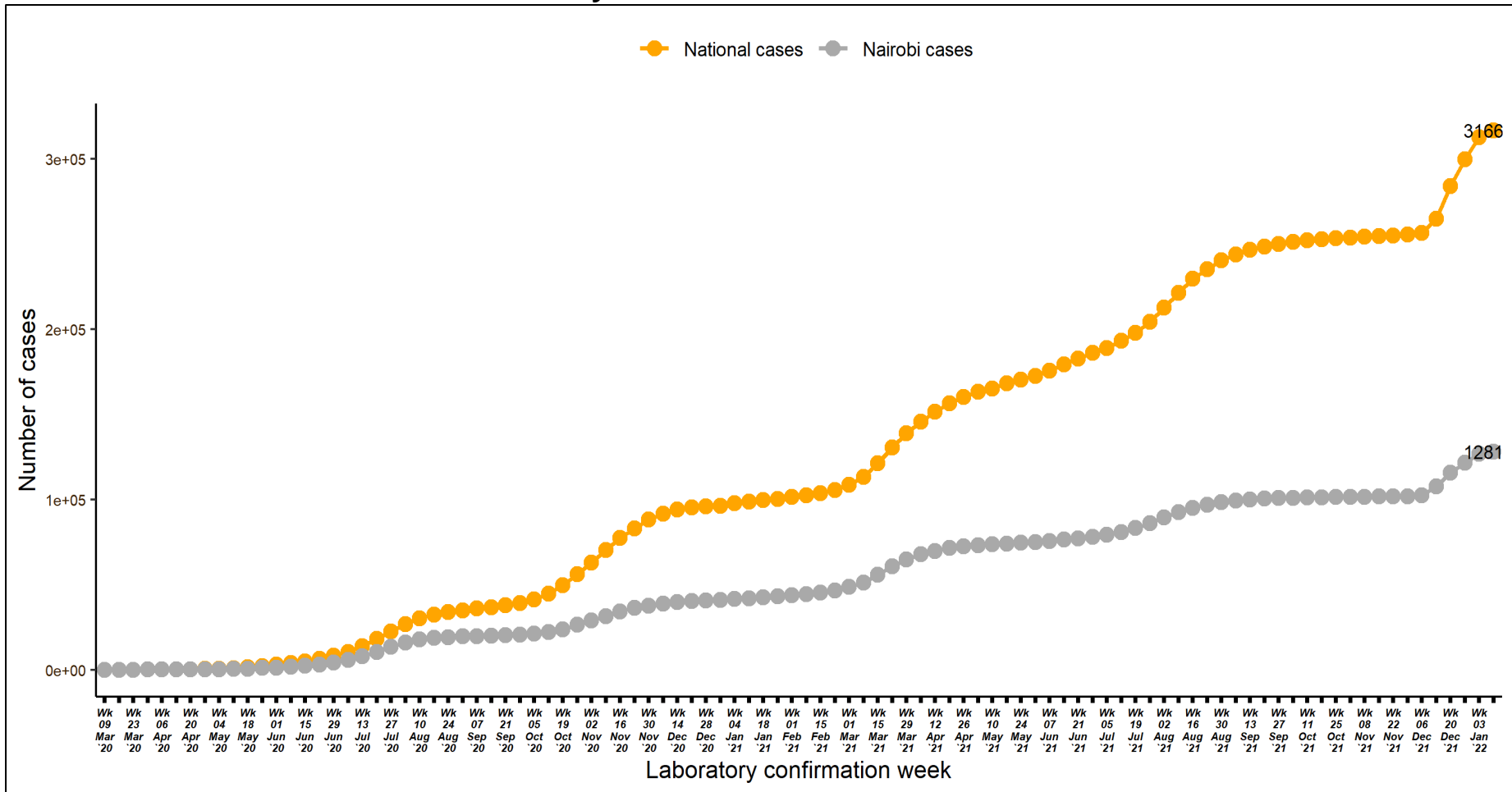


Figure 3: Cumulative cases by week of confirmation. Comparing National cases and Nairobi county cases



1.4 Laboratory testing

WHO recommends that one of the indicators that the pandemic is under control, is when < 5% of samples tested are positive for COVID-19 for the past 2 weeks, assuming that surveillance for suspected cases is comprehensive and testing rate of suspect cases, is optimum at least 1/1000 population/week. The laboratory test rate currently stands at 65949 samples per 1,000,000 people. Figure 4 shows the weekly testing rate/1000 population/week.

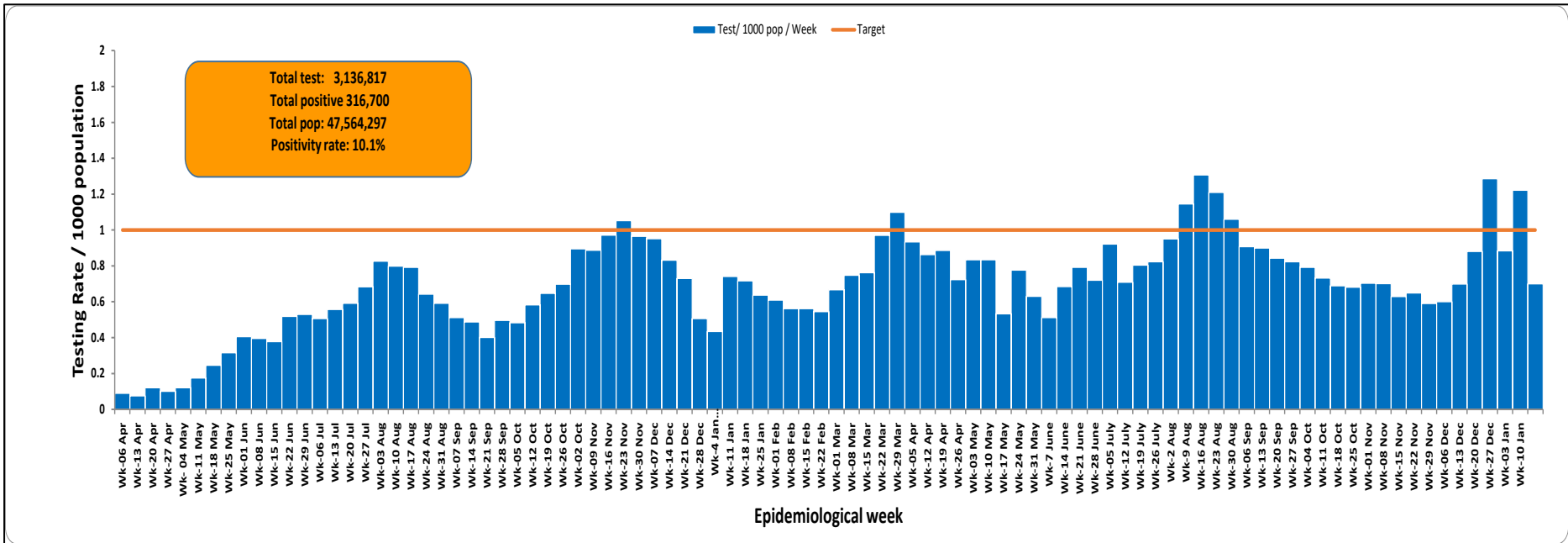


Figure 4: Laboratory Tests Conducted by Date Results were Shared



1.5 Distribution of Confirmed COVID-19 Cases by Presentation and Presentation of Symptoms among Symptomatic cases

Of the **316700** confirmed cases, 32261(10%) presented with symptoms (Figure 5). Cough (52%) and Fever (33%) were predominant presenting symptoms.

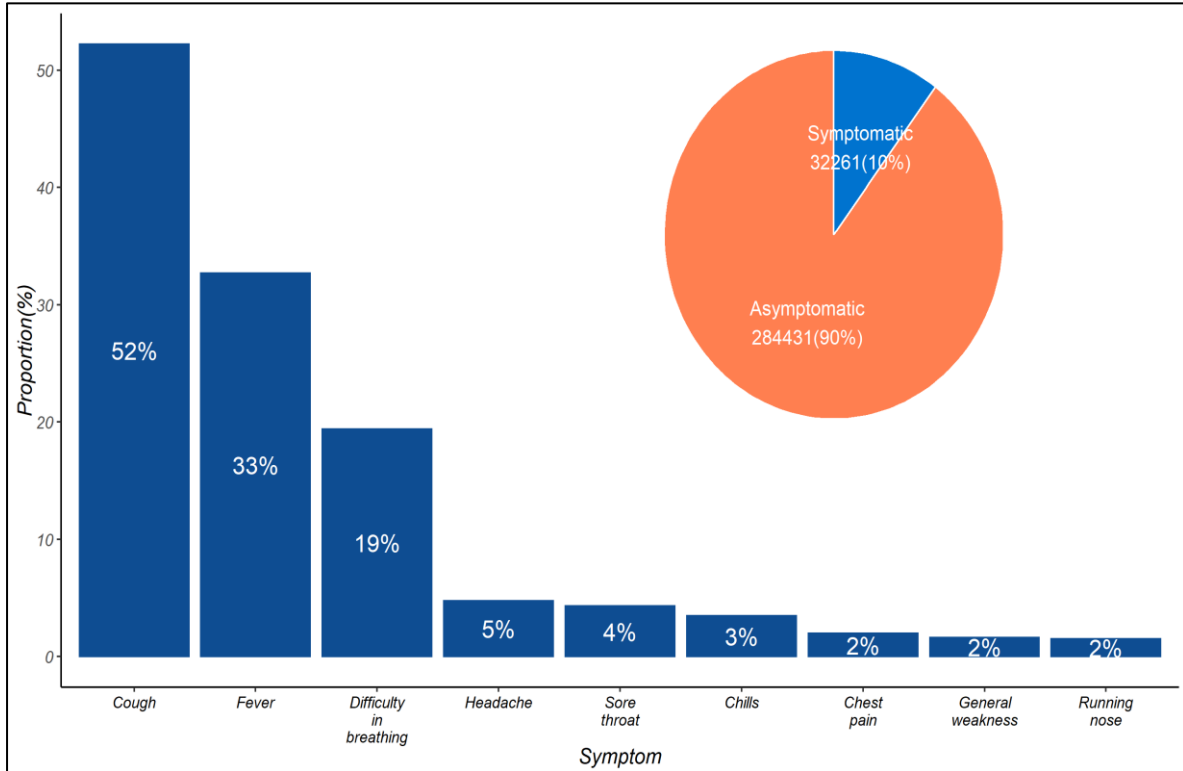


Figure 5: Distribution of Presenting Symptoms among Symptomatic COVID-19 Cases



1.6 Age and Sex Distribution of COVID Confirmed Cases and Deaths

One hundred and seventy-eight thousand eight hundred and sixty-three (56%) are males and 137837 (44%) are females. Most of the cases; 82212 (26%), are in the age group of 30-39 years. Figure 6 below shows the age and sex distribution of COVID-19 cases.

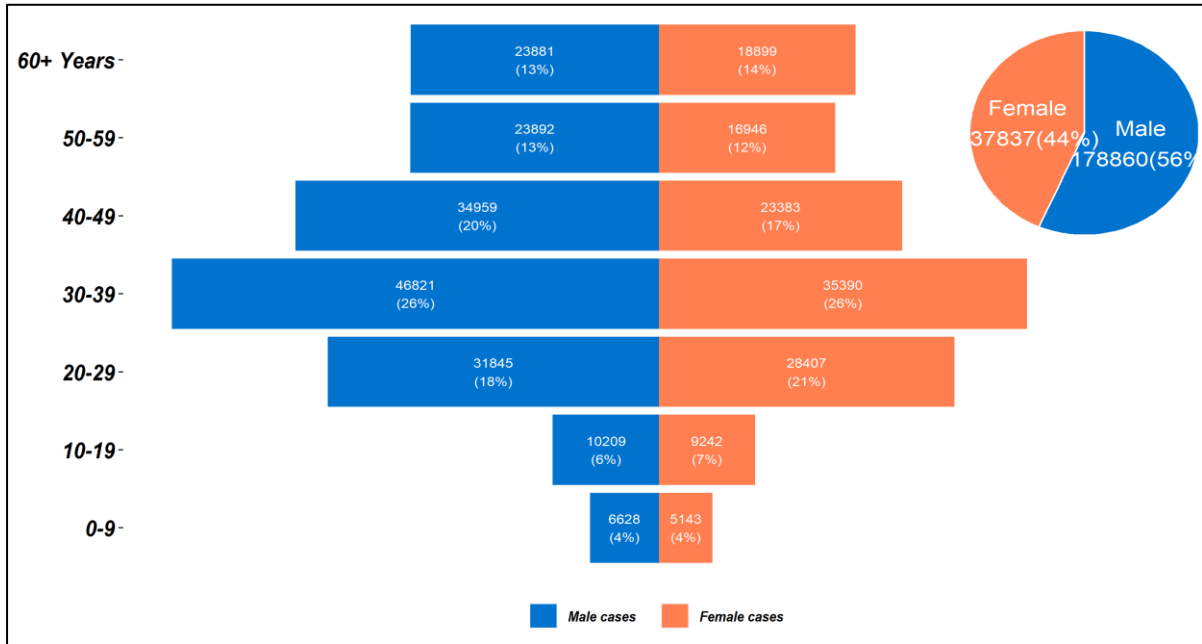


Figure 6: Age and Sex Distribution of COVID-19 Cases Kenya

A total of 5482 deaths have been reported so far, 3500 (64%) being males and 1982 (36%) were females (Figure 7).

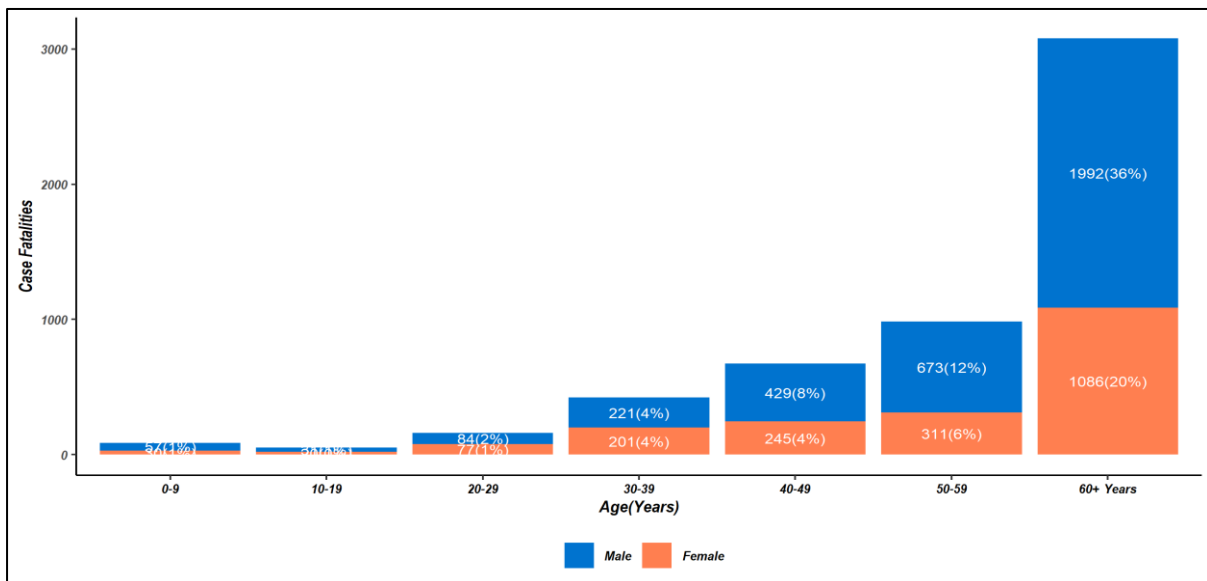


Figure 7: Distribution of Case Fatalities by Age and Sex

1.7 Trends of health care workers

Among the cases who had their occupation filled in, a cumulative of 12497 health professionals (39 new cases) and 53 mortalities (No new deaths) have been reported in all the 47 counties.

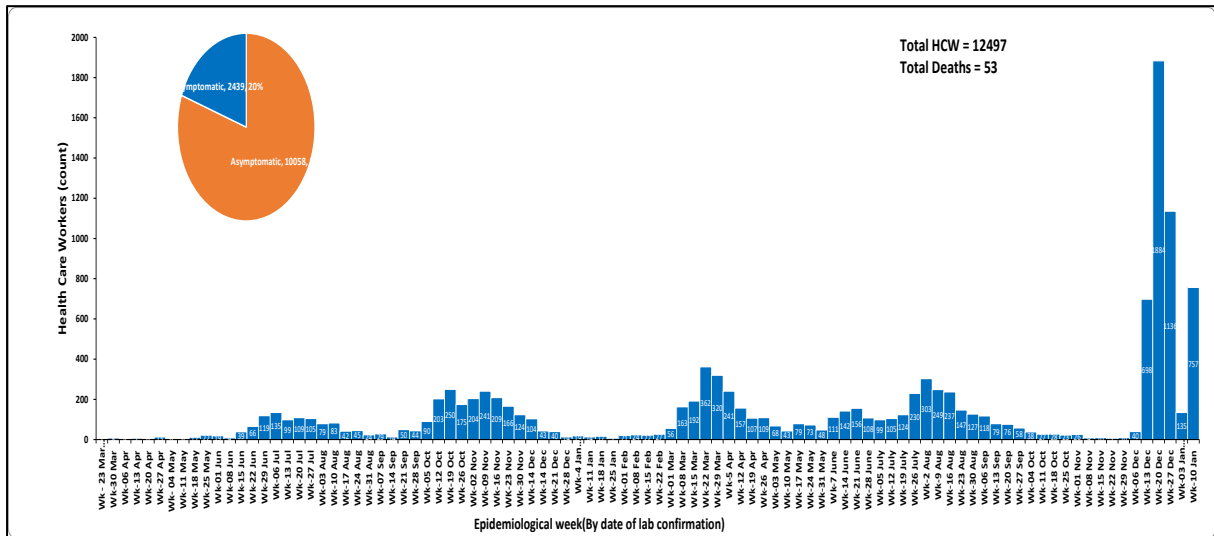


Figure 8: Covid-19 cases among health care workers

1.8 Figure 9 shows cases among health care workers by county

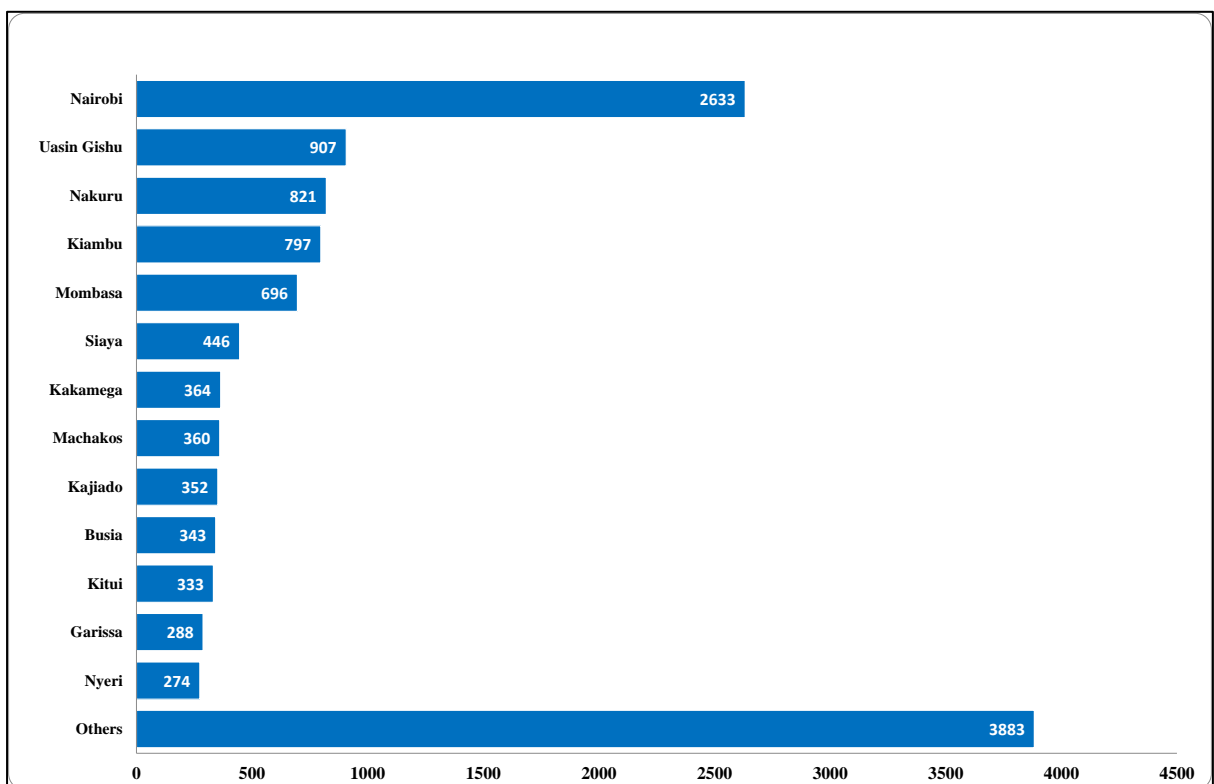


Figure 9: Health care workers cases by counties

Other counties reporting health care workers cases include – Kilifi (265), Kisumu(255), Migori (211), Turkana (211), Meru (209), Makueni(200), Taita Taveta(198), Kisii (182), Bungoma(178), Murang’a(165), Homa Bay(164), Nyandarua (161), Laikipia (148), Tharaka Nithi(134), Kirinyaga(132), West Pokot(128), Nandi(128), Kericho(111), Narok(93), Lamu(72), Embu(71), Isiolo(63), Marsabit (56), Tana River (50), Baringo(44), Bomet(41), Vihiga (37), Elgeyo Marakwet(34), Wajir(30), Kwale (25), Mandera(25), Trans Nzoia(23), Samburu (20), Nyamira (15).

1.9 Distribution of Confirmed COVID-19 Cases by County and Transmission Classification

Of the **316700** cases, 128178 (40%) are from Nairobi County followed by Kiambu County with 19937 (6%) as shown in Table 1.

Table 1: Distribution of confirmed COVID-19 Cases by County and transmission classification

| County | Imported | Local |
|-------------|----------|--------|
| Nairobi | 507 | 106278 |
| Kiambu | 30 | 15955 |
| Nakuru | 35 | 13427 |
| Mombasa | 168 | 12414 |
| Uasin Gishu | 32 | 7906 |
| Kajiado | 46 | 6308 |
| Machakos | 11 | 6289 |
| Kisumu | 18 | 6191 |
| Siaya | 3 | 5395 |
| Busia | 162 | 5002 |
| Kilifi | 20 | 4856 |
| Nyeri | 1 | 4820 |
| Kericho | 2 | 4473 |
| Kitui | 2 | 4311 |
| Murang'a | 0 | 3672 |
| Kakamega | 9 | 3119 |
| Meru | 0 | 3081 |
| Kisii | 6 | 2789 |
| Makueni | 3 | 2721 |
| Nyandarua | 1 | 2542 |

| County | Imported | Local |
|-----------------|-----------------|--------------|
| Migori | 22 | 2504 |
| Bungoma | 4 | 2401 |
| Laikipia | 2 | 2374 |
| Garissa | 5 | 2324 |
| Embu | 0 | 2163 |
| Turkana | 22 | 1950 |
| Nandi | 0 | 1932 |
| Trans nzoia | 0 | 1915 |
| Kirinyaga | 1 | 1774 |
| Homabay | 6 | 1746 |
| Taita taveta | 9 | 1556 |
| Baringo | 1 | 1417 |
| Nyamira | 0 | 1348 |
| Bomet | 0 | 1305 |
| Narok | 2 | 1173 |
| Tharaka nithi | 0 | 1054 |
| Kwale | 15 | 924 |
| Vihiga | 2 | 907 |
| Marsabit | 0 | 830 |
| Lamu | 0 | 632 |
| Isiolo | 0 | 614 |
| West pokot | 0 | 599 |
| Elgeyo marakwet | 0 | 415 |
| Tana river | 0 | 316 |
| Mandera | 5 | 308 |
| Wajir | 17 | 251 |
| Samburu | 0 | 230 |



1.10 Map of Kenya showing COVID-19 attack rate by County per 100,000 population

Nairobi City County has the highest attack rate of 2915.1 per 100,000 population followed by Mombasa County at 1467.6 per 100,000 population (Figure 10).

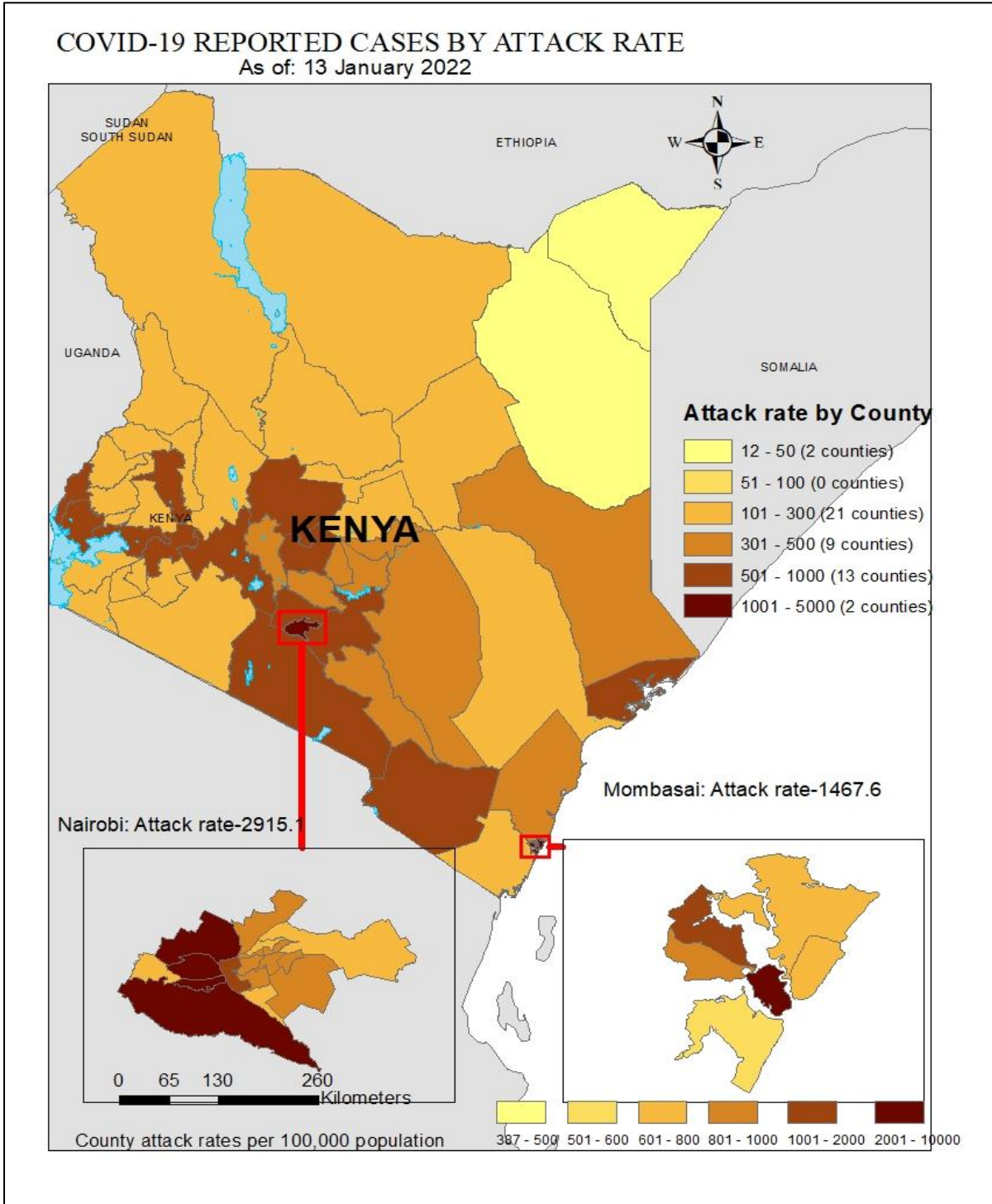


Figure 10: County Attack Rate per 100,000 Population



1.11 Map of Kenya showing COVID-19 caseload by County

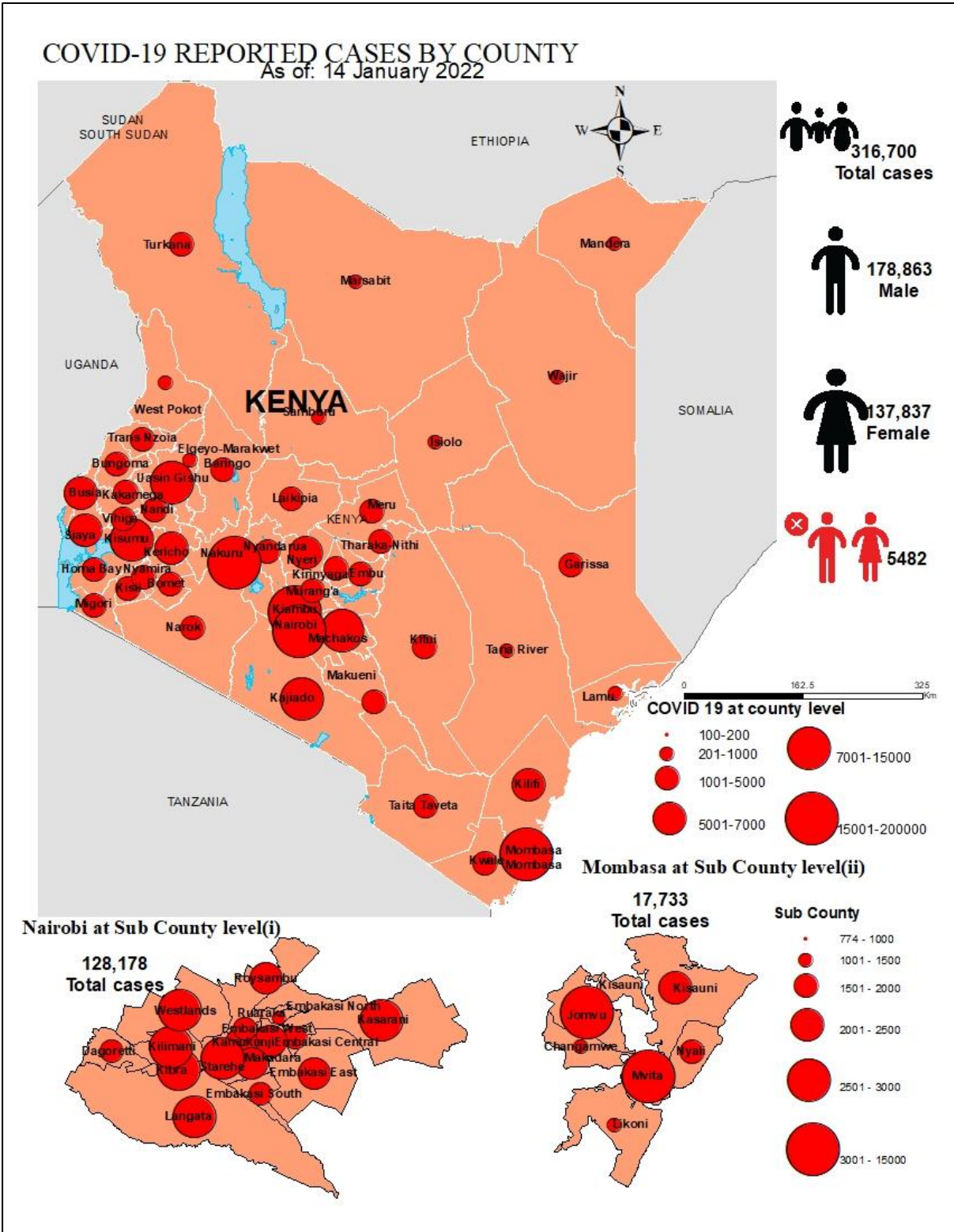
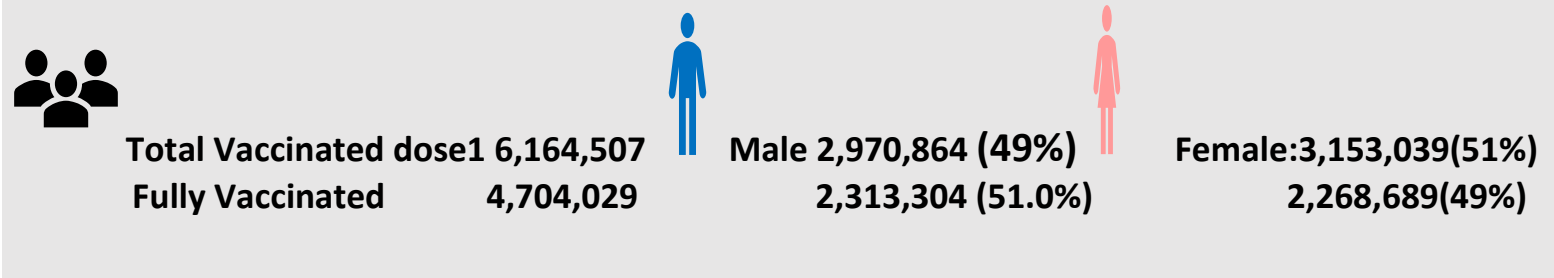


Figure 11: County Attack Rate per 100,000 Population

1.12 Kenya COVID-19 Vaccination Updates



The Kenya Ministry of Health launched the National COVID-19 vaccinations on the 5th March 2021 after receiving **1,120,000** doses of the AstraZeneca Vaccine through the COVID-19 Vaccines Global Access (COVAX) facility. As of 13th January 2022, a total of **6,164,507 persons** were vaccinated with the 1st dose and **4,704,029 persons** being fully vaccinated, targeting frontline workers, teachers, security officers, and those above 58 years of age. 51% of those vaccinated with the 1st dose were females and 49% were male. 51% of those fully vaccinated were males and 49% were female. Others (intersex/transgender) constituted 2,501 in the 1st dose and 1,846 were fully vaccinated. (Figure 12).

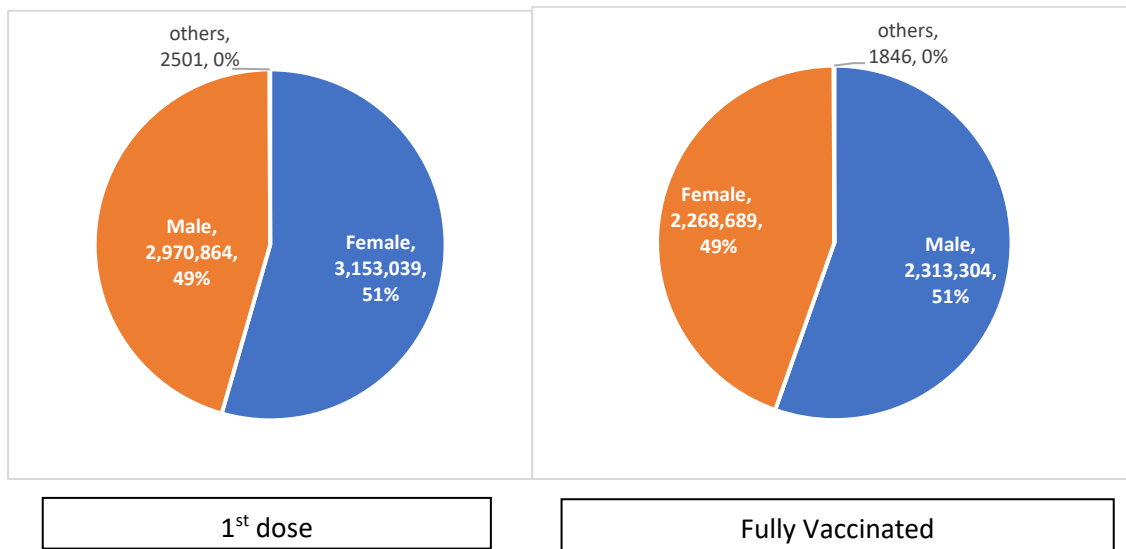


Figure 12: Sex Distribution of persons Vaccinated

The highest proportion of the population fully vaccinated was in Nairobi County at 36.3% and the least was in Tana River County (4.10%) (Table 2).

Table 2: Distribution of 2nd doses and proportion of fully Vaccinated by County

| County | Vaccinations dose 2 | Target population above 18 years | Proportion of fully vaccinated population | County | Vaccinations dose 2 | Target population above 18 years | Proportion of fully vaccinated population |
|---------------|---------------------|----------------------------------|-------------------------------------------|-----------------|---------------------|----------------------------------|-------------------------------------------|
| Nairobi | 1,109,334 | 3,052,494 | 36.30% | Elgeyo Marakwet | 32,250 | 243,690 | 13.20% |
| Nyeri | 172,064 | 510,028 | 33.70% | Meru | 124,612 | 949,186 | 13.10% |
| Laikipia | 84,200 | 306,448 | 27.50% | Makueni | 72,760 | 584,379 | 12.50% |
| Kiambu | 394,575 | 1,623,545 | 24.30% | Baringo | 37,584 | 338,937 | 11.10% |
| Kakamega | 229,023 | 982,838 | 23.30% | Nandi | 52,248 | 492,652 | 10.60% |
| Taita Taveta | 44,351 | 213,335 | 20.80% | Busia | 49,325 | 465,190 | 10.60% |
| Uasin Gishu | 137,422 | 693,570 | 19.80% | Migori | 54,845 | 557,657 | 9.80% |
| Muranga | 131,656 | 675,364 | 19.50% | Kisii | 66,623 | 697,445 | 9.60% |
| Nyandarua | 73,378 | 376,776 | 19.50% | Samburu | 13,762 | 145,608 | 9.50% |
| Machakos | 169,261 | 905,172 | 18.70% | Kwale | 38,350 | 451,261 | 8.50% |
| Nakuru | 237,878 | 1,273,265 | 18.70% | Homa Bay | 50,815 | 608,326 | 8.40% |
| Kirinyaga | 76,583 | 413,708 | 18.50% | Isiolo | 10,665 | 133,358 | 8.00% |
| Vihiga | 59,295 | 329,317 | 18.00% | Kitui | 48,983 | 624,506 | 7.80% |
| Kisumu | 116,010 | 656,147 | 17.70% | West Pokot | 17,949 | 283,727 | 6.30% |
| Mombasa | 139,910 | 804,202 | 17.40% | Garissa | 25,070 | 399,358 | 6.30% |
| Bungoma | 144,911 | 843,735 | 17.20% | Bomet | 29,111 | 465,963 | 6.20% |
| Embu | 67,696 | 395,980 | 17.10% | Kilifi | 48,978 | 784,567 | 6.20% |
| Kajiado | 111,159 | 663,201 | 16.80% | Marsabit | 13,529 | 219,170 | 6.20% |
| Trans Nzoia | 78,965 | 518,077 | 15.20% | Mandera | 20,262 | 341,857 | 5.90% |
| Tharaka Nithi | 34,885 | 246,699 | 14.10% | Narok | 32,150 | 548,229 | 5.90% |
| Kericho | 71,479 | 508,980 | 14.00% | Wajir | 16,774 | 337,296 | 5.00% |
| Siaya | 75,202 | 536,031 | 14.00% | Turkana | 22,940 | 468,878 | 4.90% |
| Nyamira | 47,446 | 341,397 | 13.90% | Tana River | 6,176 | 151,051 | 4.10% |
| Lamu | 11,466 | 83,433 | 13.70% | Total | 4,703,910 | 27,246,033 | 17.30% |

The proportion of health care workers who were fully vaccinated as of 13th January 2022 was highest at 83.7% as shown below.

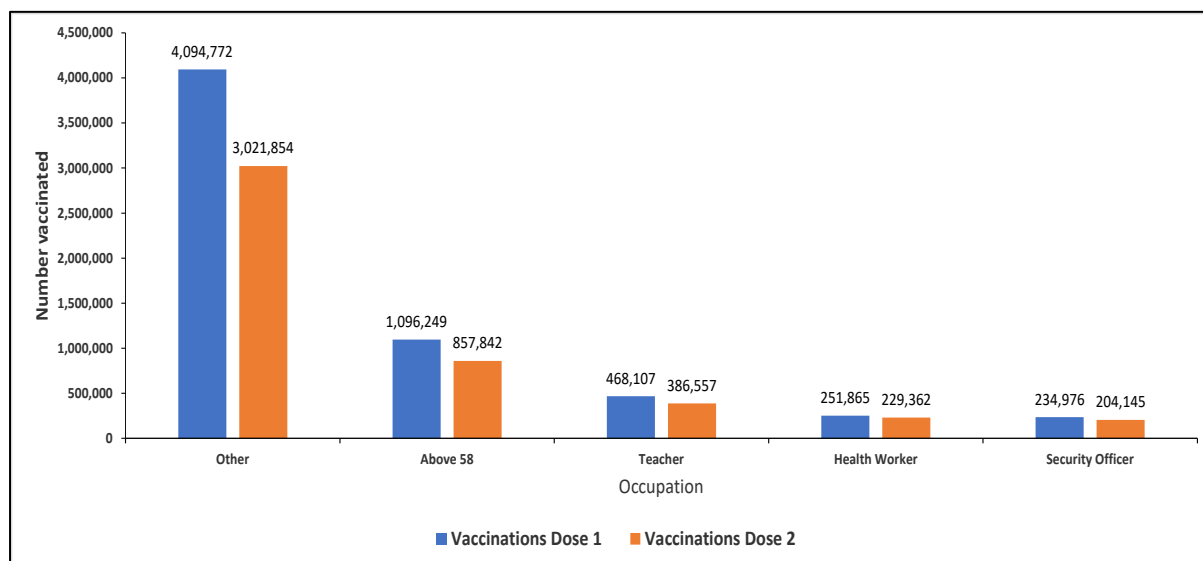


Figure 13: Distribution of persons Vaccinated with 1st and 2nd dose by Occupation

Table 3: Distribution of fully vaccinated persons by priority group

| Priority group | Johnson and Johnson | Dose 2 uptake | Fully vaccinated (Dose 2 uptake+Johnson & Johnson) | Dose 1 uptake | % Fully vaccinated |
|--------------------|---------------------|------------------|----------------------------------------------------|------------------|--------------------|
| Health Workers | 18,576 | 210,786 | 229,362 | 251,865 | 83.70% |
| Security Officers | 26,360 | 177,785 | 204,145 | 234,976 | 75.70% |
| Teachers | 37,253 | 349,304 | 386,557 | 468,107 | 74.60% |
| Above 58 years old | 159,438 | 698,404 | 857,842 | 1,096,249 | 63.70% |
| Others | 892,730 | 2,129,124 | 3,021,854 | 4,094,772 | 52.00% |
| Total | 1,138,626 | 3,565,403 | 4,704,029 | 6,164,507 | 57.80% |

Seventeen (17.3) percent of the phase 1 targets have so far been fully vaccinated with 110.0% of the health care workers Vaccinated for dose 2 (Table 3).

Table 4: Progress towards meeting targets: Kenya, 13th January 2022

| Occupation | Fully Vaccinated | Target | % Fully Vaccinated |
|--------------------|------------------|-------------------|--------------------|
| Health Workers | 229,362 | 208,418 | 110.0% |
| Security Officers | 204,145 | | |
| Teachers | 386,557 | 330,671 | 80.4% |
| Above 58 years old | 857,842 | 2,594,585 | 33.1% |
| Others | 3,021,854 | | |
| Total | 4,704,029 | 27,246,033 | 17.3% |

Vaccine LOGISTICS 13th January 2022

Table 5: Current Vaccines Stocks Status

| Location | Quantities (Doses) |
|----------------------------------------|--------------------------------------------------------------------------------------------------------------------------------------------------------------------------------------------------------------------------------------------------------------------------------------------------------------------------------------------------------------------------------------------------------------------------------------------------------------------------------------------------------------|
| National (CVS Kitengela) | 7,222,520 |
| Total distributed to 9 regional depots | 16,057,300 |
| Total | 23,279,820 Inclusive: AstraZeneca (GOK- 1,020,000, India-100,000, MOH South Sudan- 72,000, Denmark-2,769,100, UK-817,040, Greece-180,000, Canada, US-459,300, Latvia-55,200, Poland-211,200, Slovakia- 160,000, COVAX France- 401,900, Netherlands-2,292,000, COVAX Germany-2,592,000, Argentina- 400,000) J&J (GOK-1,804,800, Germany- 4,291,200, USA- 1,176,000) Moderna (USA-1,760,780, Spain-564,480) PFIZER (USA-2,822,040) Sinopharm (China-200,000). |

Table 6: Vaccine Doses Dispensed as of 13th January 2022

| Vaccine | Total doses Administered |
|--------------------------------------|--------------------------|
| Total 1st doses (All vaccines) | 6,164,507 |
| Fully vaccinated | 4,704,029 |
| Booster doses | 80,607 |
| Total doses (All Vaccines + Sputnik) | 10,974,305 |
| First Dose 15-18 years (Pfizer) | 25,754 |
| % of adults fully vaccinated | 17.3% |

2.0 KEY ACTIONS

2.1 Coordination

- Response efforts continue to be coordinated through a whole government and multi-agency approach following Executive Order No. 2 of 2021 issued by His Excellency the President on 26th March 2021.
- The National Emergency Response Committee that was constituted following the executive order meets regularly to provide policy directions on response efforts towards the COVID-19 outbreak.
- The Public Health Emergency Operations Centre is fully activated and continues to coordinate response measures as well as provide daily situation reports informing planning.

2.2 Case Management and Infection Prevention & Control

- In the last 24 hours, 1,155 COVID-19 patients (Health Facility: 113, HBIC: 1042) recovered and were discharged bringing the total number of recoveries and discharges for COVID- 280,199 (Facility: 50871, HBIC: 229,328).
- Currently, there are 48 COVID-19 cases admitted in the intensive care unit; 4 on supplemental oxygen; 44 on ventilatory support, and 0 under observation.
- The total number of health workers infected is **12,497 (39 new cases)** with 53 mortalities (**no new death**) reported in all 47 counties.

2.3 Surveillance and laboratory and Point of Entry

- The Diagnostic capacity in the Country has been scaled up. A total of eighty-eight (88) public and private laboratories in thirteen (13) counties (Nairobi, Kisumu, Mombasa, Kilifi, Wajir, Kericho, Uasin Gishu, Machakos, Busia, Nakuru, Kajiado, Trans Nzoia, and Mandera) are currently conducting confirmatory tests for COVID-19.
- In the last 24 hours, 9337 samples were tested across various laboratories of which one thousand and thirty-five (1035) samples turned positive for COVID-19. A total of 3,136,817 cumulative tests have so far been conducted.
- Mandatory screening of cargo vessel crew is ongoing at all points of entry to minimize the risk of importation of additional cases from other affected countries.
- Port Health Services at all points of entry and other stakeholders' measures have been put in place to ensure the safety of travelers and traders in line with Ministry of Health guidelines on social distancing, hand washing, sanitizing, and enhanced temperature screening, disinfection of facilities, and sensitization of staff.

3.0 KEY CHALLENGES

- Stigmatization and discrimination on COVID-19 suspects affecting willingness to seek testing and management of cases likely to lead to further spread of the disease.
- Commodity insecurity at the sub-national level of both personal protective equipment and laboratory reagents at COVID – 19 testing laboratories.
- There is a shortage of sampling kits across several counties affecting testing of suspected cases, contacts, and limiting overall access to testing.
- Inadequate resources to facilitate critical response pillars limiting response capacity in detecting, investigating, contact tracing, and follow-up of cases.

4.0 NEXT STEPS

- Strengthen enforcement of public health measures across the country as directed by the President.
- There is a need to streamline cross-country coordination to address issues around the borders especially those counties bordering neighboring countries.
- Strengthening the contact tracing in the sub-counties.
- Strengthen commodity security of personal protective equipment at the sub-national level.
- Strengthen diagnostic quality assurance system

Emergency Operation Center:

Telephone: 0729 471 414, 0732 353 535, 0800 721316(Toll Free)
COVID-19 Call center: *719# (short message only), 719 (Audio)
COVID-19 Dashboard: https://khro.health.go.ke/#/covid_19_tracker
Email: manager.eockenya@gmail.com