



COVID-19 OUTBREAK IN KENYA

DAILY SITUATION REPORT - 669

1. KEY HIGHLIGHTS

- Six hundred and twenty-four (624)** new confirmed COVID-19 cases were reported in the last 24 hours bringing the total number of confirmed cases in Kenya to **317324 cases** as of 15 January 2022. Counties reporting new cases are **Nairobi (216), Siaya (64), Nakuru (48), Kiambu (34), Mombasa (29), Nyeri (27), Bungoma (18), Meru (18), Uasin Gishu (13), Busia (12), Kilifi (12), Nyamira (10), Kajiado (9), Murang'a (9), Nyandarua (9), Isiolo (7), Kakamega (7), Makueni (7), Marsabit (7), Kericho (6), Kirinyaga (6), Kisumu (6), Turkana (6), Laikipia (4), West Pokot (4), Baringo (3), Kitui (3), Machakos (3), Nandi (3), Tharaka Nithi (3), Trans Nzoia (3), Elgeyo Marakwet (2), Garissa (2), Homa Bay (2), Kisii (2), Kwale (2), Samburu (2), Bomet (1), Embu (1), Lamu (1), Migori (1), Narok (1) and Vihiga (1).**
- Six (6) deaths have been reported over the last 24 hrs.** The total number of deaths reported since the beginning of the outbreak is **5488, case fatality rate (CFR) is 1.7%**
- As of today, **forty-seven (47) counties** have reported cases namely: Nairobi (128394), Kiambu (19971), Mombasa (17762), Nakuru (16668), Uasin Gishu (10326), Kisumu (7734), Machakos (7571), Kajiado (7567), Kilifi (6920), Busia (6493), Siaya (6259), Nyeri (5768), Kericho (5716), Kitui (4791), Murang'a (4396), Kakamega (4114), Meru (4062), Kisii (3386), Migori (3288), Laikipia (3162), Bungoma (3124), Makueni (3036), Nyandarua (2950), Garissa (2624), Turkana (2611), Embu (2594), Nandi (2317), Trans nzoia (2300), Kirinyaga (2224), Homa bay (2031), Taita taveta (2008), Nyamira (1682), Baringo (1664), Bomet (1578), Narok (1362), Kwale (1299), Tharaka Nithi (1221), Vihiga (1072), Marsabit (975), West pokot (822), Lamu (767), Isiolo (764), Elgeyo marakwet (516), Mandera (413), Tana river (407), Samburu (315), and Wajir (300).
- Nairobi city** and **Mombasa** Counties have the highest attack rates of COVID-19 at **2920** and **1470** per **100,000** population respectively when compared to **667.1/100,000** for the whole country and need enhanced interventions. In addition, the COVID-19 outbreak has so far spread to **100%** of the counties in the country. **Risk communication, laboratory testing, and contact tracing** have been identified as the key challenges.
- Three hundred thousand nine hundred and five - 300905 (95%) of the 317324 confirmed cases** are local transmissions.
- In the last 24 hours, 7,045 samples were tested across various laboratories of which six hundred and twenty-four (624) samples turned positive for COVID-19. A total of 3,143,862 cumulative tests have so far been conducted.**
- In the last 24 hours, 1,144 COVID-19 patients (Health Facility: 215, HBIC: 929) recovered and were discharged bringing the total number of recoveries and discharges for COVID- 281,343 (Facility: 51086, HBIC: 230,257).**



Total Cases
=317324

Male = 179193
Female = 138131

Deaths
=5488

1.1 Epidemiology

Since 13 March 2020 when the first case was confirmed in Kenya, a total of **317324** confirmed cases and **5488** deaths giving a case fatality rate of **1.7%** have been line-listed. Of these, 300905 cases (95%) were local transmissions and 16418 (5%) are imported cases. Figure 1 below shows the trends of cases.

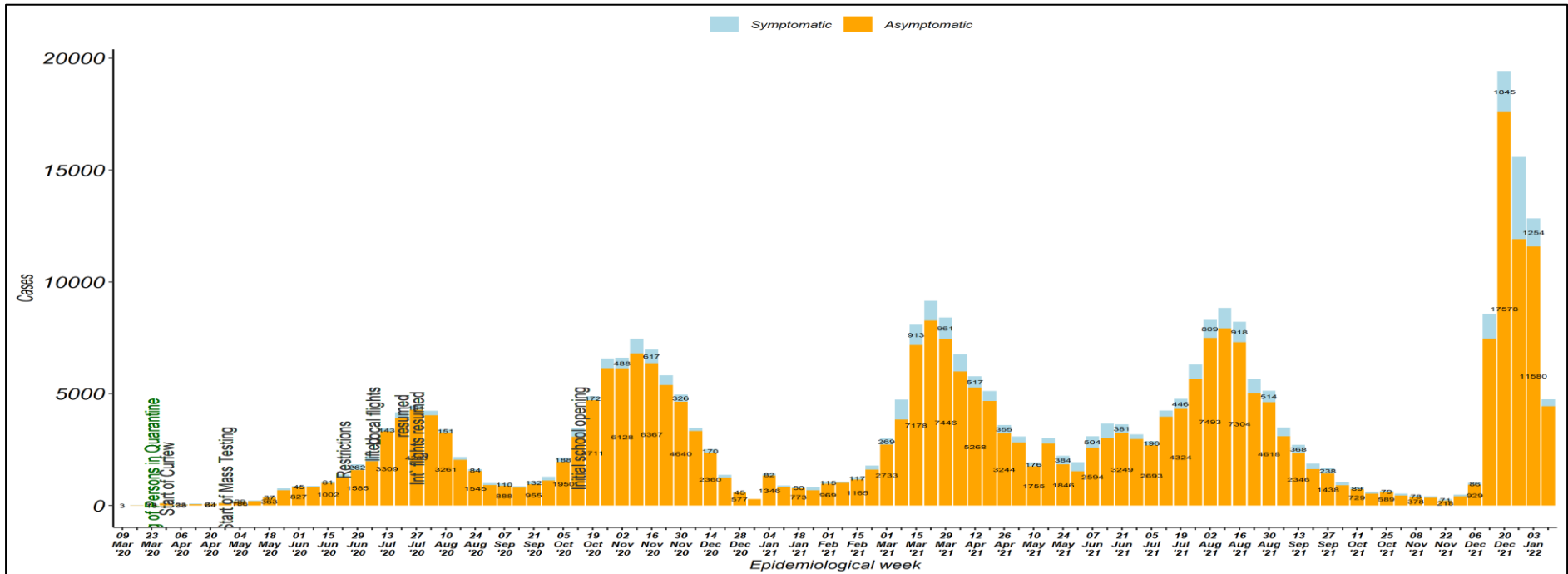


Figure 1: Trends of COVID-19 Outbreak Kenya



1.2 The trends of COVID-19 deaths

A total of **5488** cases died since the beginning of the outbreak giving a case fatality rate of **1.7%**. Figure 2 shows the trend of COVID-19 deaths by week.

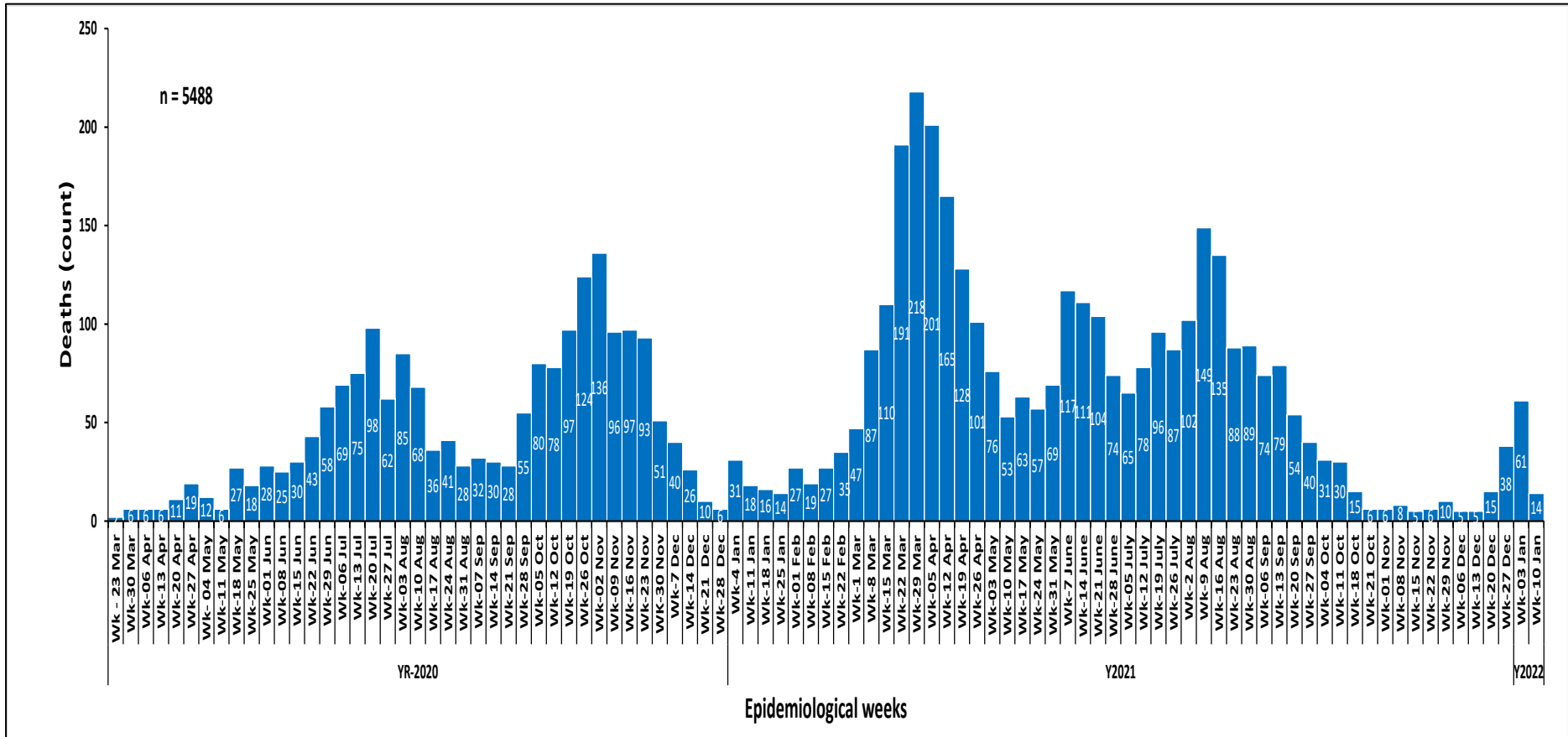


Figure 2: Fatalities by week



1.3 National caseload vs Nairobi county caseload

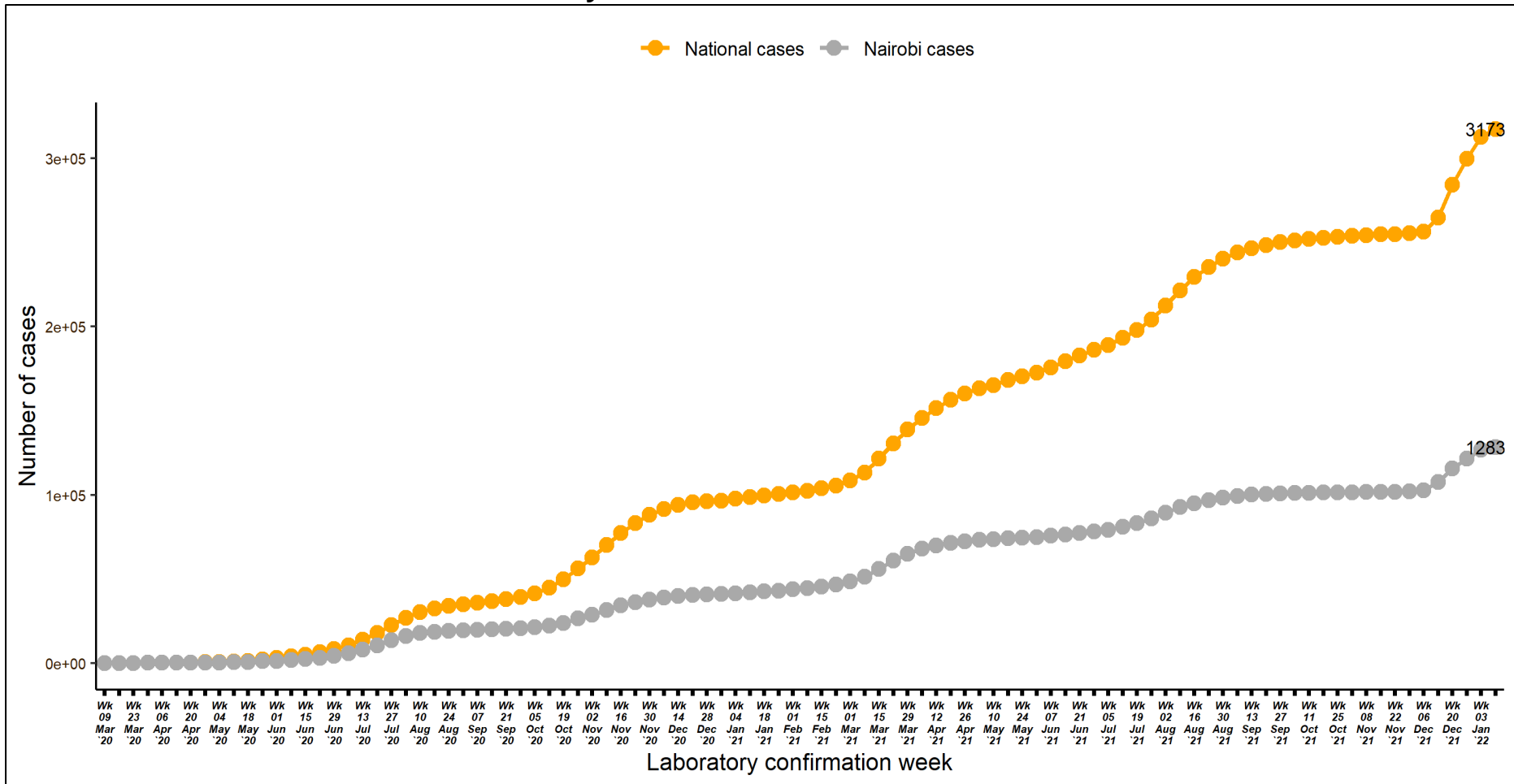


Figure 3: Cumulative cases by week of confirmation. Comparing National cases and Nairobi county cases



1.4 Laboratory testing

WHO recommends that one of the indicators that the pandemic is under control, is when < 5% of samples tested are positive for COVID-19 for the past 2 weeks, assuming that surveillance for suspected cases is comprehensive and testing rate of suspect cases, is optimum at least 1/1000 population/week. The laboratory test rate currently stands at **66097.1** samples per 1,000,000 people. Figure 4 shows the weekly testing rate/1000 population/week.

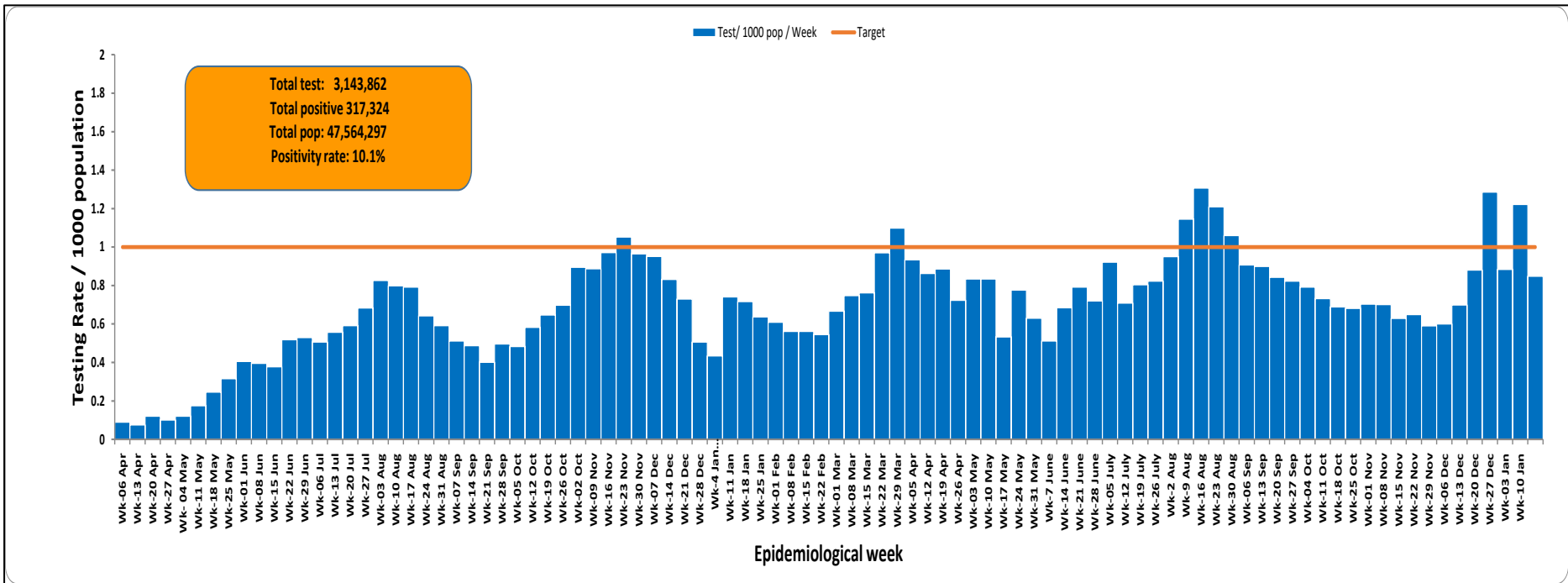


Figure 4: Laboratory Tests Conducted by Date Results were Shared



1.5 Distribution of Confirmed COVID-19 Cases by Presentation and Presentation of Symptoms among Symptomatic cases

Of the **317324** confirmed cases, 32296(10%) presented with symptoms (Figure 5). Cough (52%) and Fever (33%) were predominant presenting symptoms.

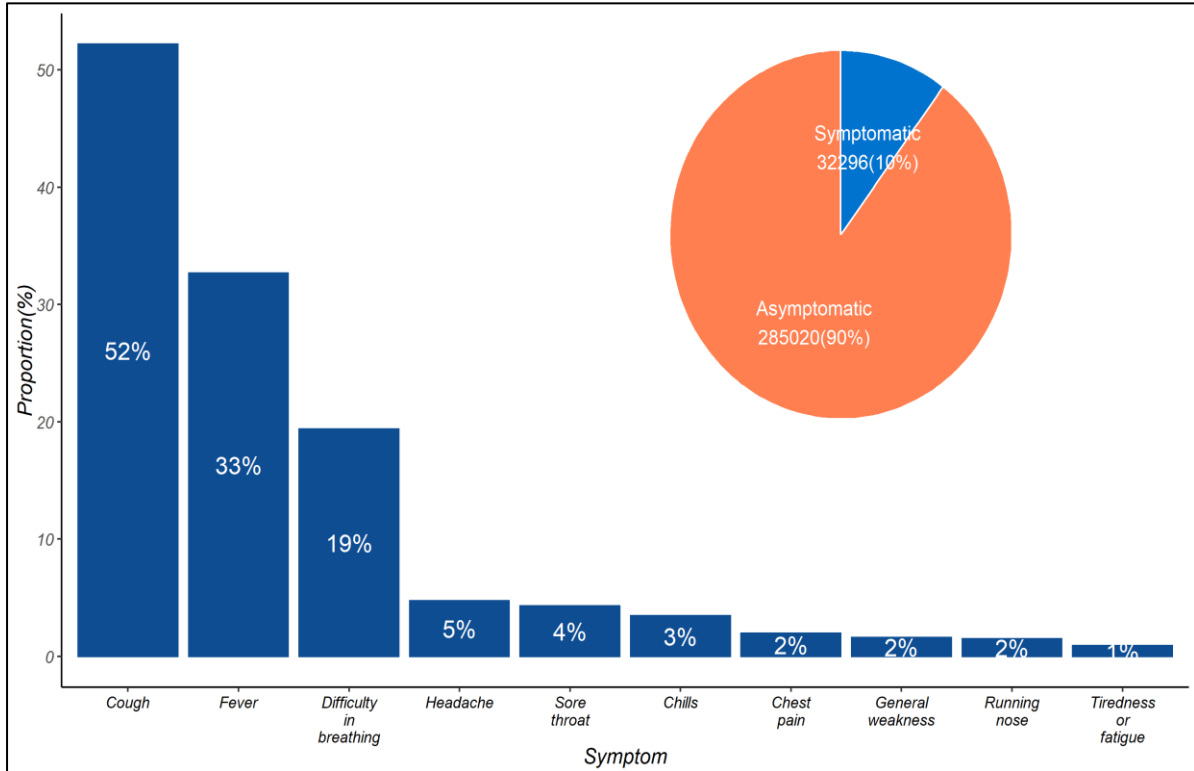


Figure 5: Distribution of Presenting Symptoms among Symptomatic COVID-19 Cases



1.6 Age and Sex Distribution of COVID Confirmed Cases and Deaths

One hundred and seventy-nine thousand one hundred and ninety-three (56%) are males and 138131 (44%) are females. Most of the cases; 82322 (26%), are in the age group of 30-39 years. Figure 6 below shows the age and sex distribution of COVID-19 cases.

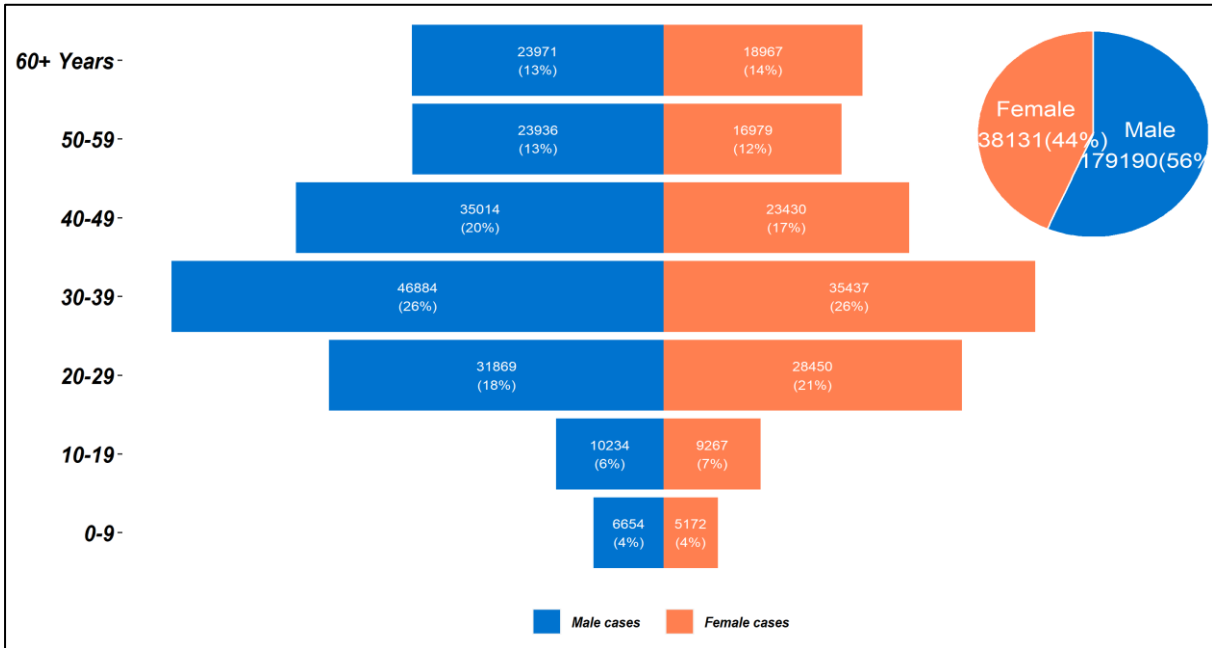


Figure 6: Age and Sex Distribution of COVID-19 Cases Kenya

A total of 5488 deaths have been reported so far, 3504 (64%) being males and 1984 (36%) being females (Figure 7).

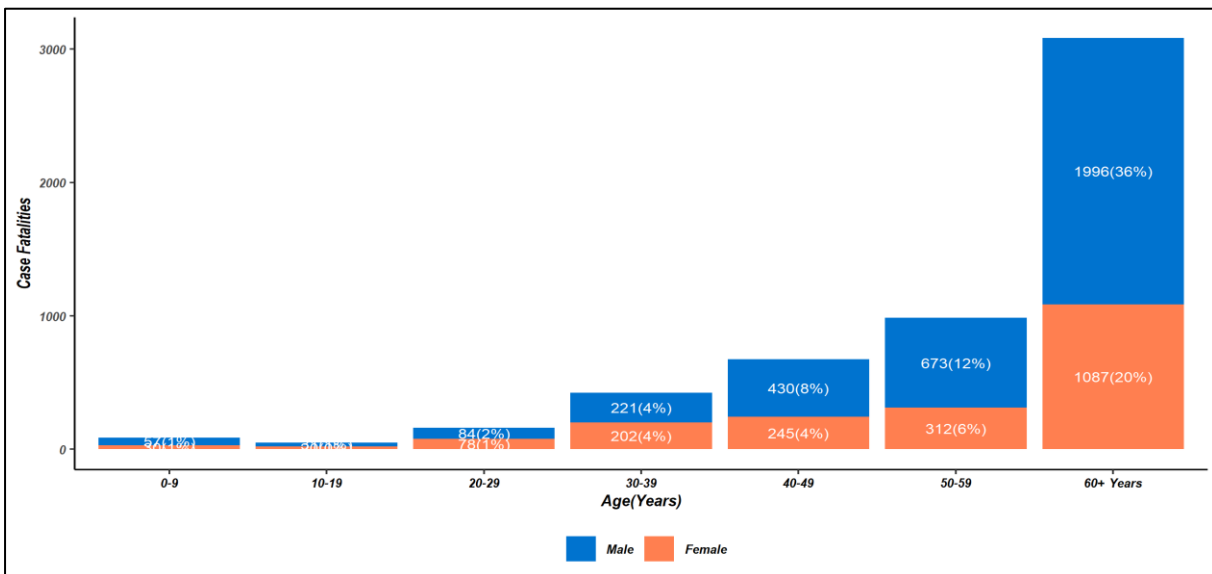


Figure 7: Distribution of Case Fatalities by Age and Sex



1.7 Trends of health care workers

Among the cases who had their occupation filled in, a cumulative of 12526 health professionals (29 new cases) and 53 mortalities (No new deaths) have been reported in all the 47 counties.

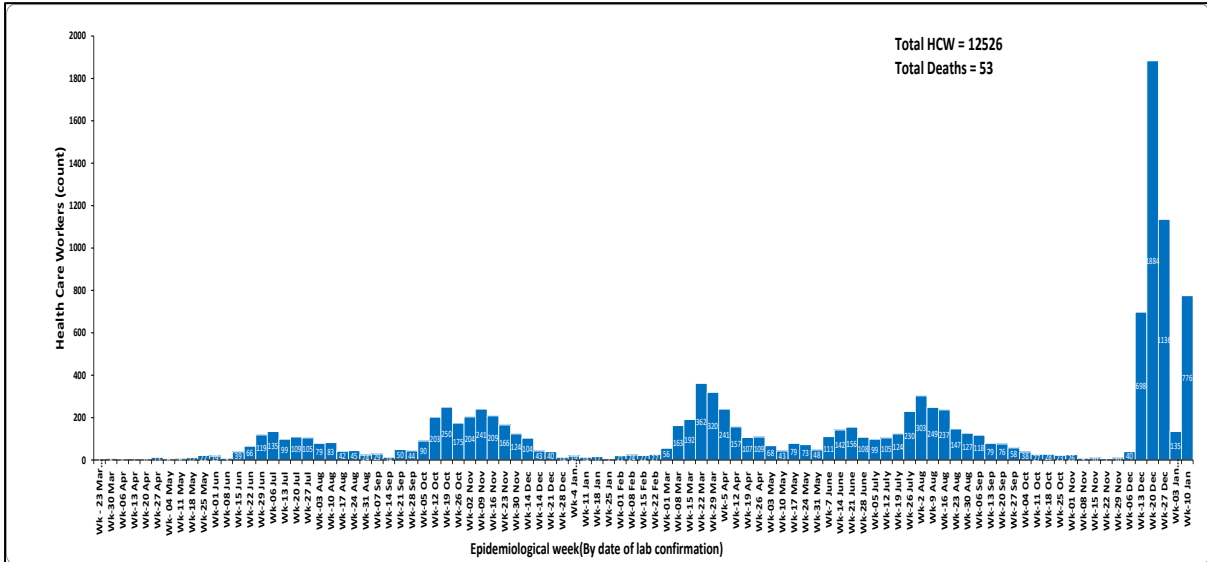


Figure 8: Covid-19 cases among health care workers

1.8 Figure 9 shows cases among health care workers by county

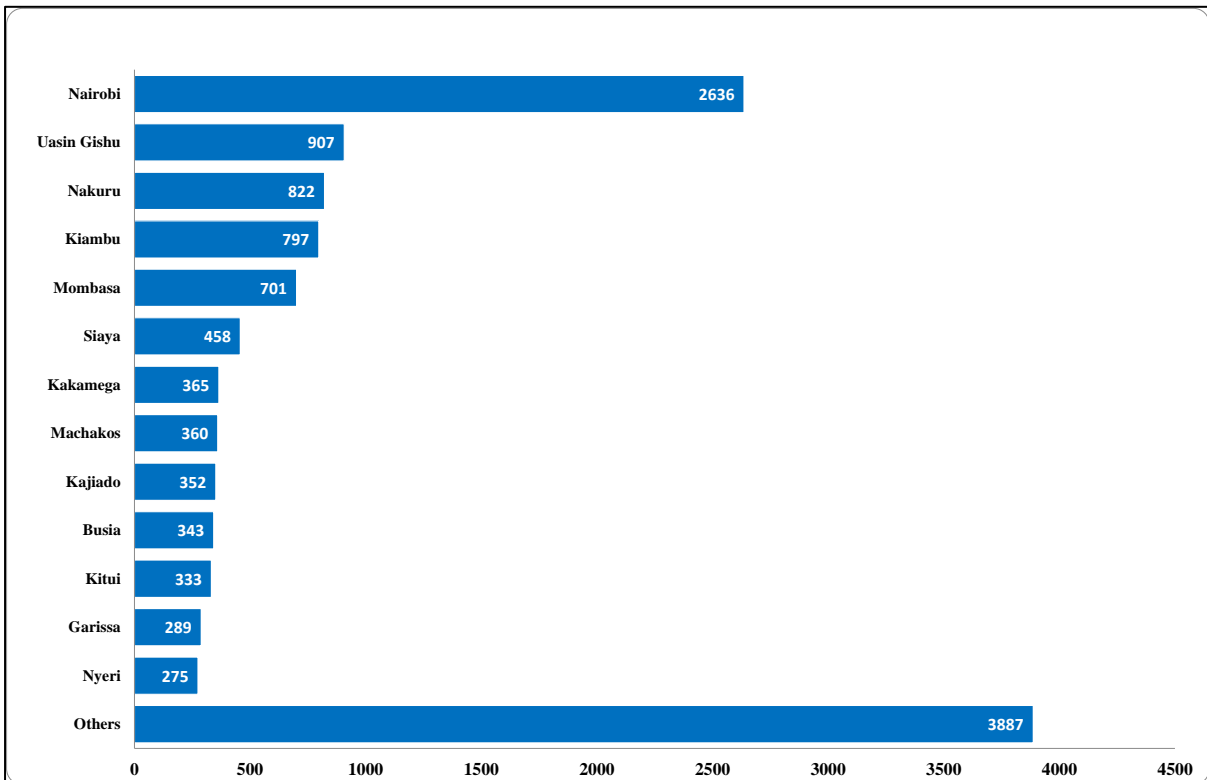


Figure 9: Health care workers cases by counties

Other counties reporting health care workers cases include – Kilifi (265), Kisumu(256), Migori (211), Turkana (211), Meru (209), Makueni(200), Taita Taveta(198), Kisii (182), Bungoma(178), Murang'a(165), Homa Bay(164), Nyandarua (161), Laikipia (148), Tharaka Nithi(134), Kirinyaga(134), West Pokot(128), Nandi(128), Kericho(111), Narok(93), Lamu(72), Embu(71), Isiolo(63), Marsabit (56), Tana River (50), Baringo(44), Bomet(41), Vihiga (37), Elgeyo Marakwet(34), Wajir(30), Kwale (25), Mandera(25), Trans Nzoia(23), Nyamira (21), Samburu (20),

1.9 Distribution of Confirmed COVID-19 Cases by County and Transmission Classification

Of the **317324** cases, 128394 (40%) are from Nairobi County followed by Kiambu County with 19971 (6%) as shown in Table 1.

Table 1: Distribution of confirmed COVID-19 Cases by County and transmission classification

County	Imported	Local
Nairobi	588	122121
Kiambu	37	19021
Mombasa	452	16767
Nakuru	39	15674
Uasin Gishu	32	9726
Kisumu	19	7288
Kajiado	50	7235
Machakos	12	7231
Kilifi	20	6552
Busia	177	6208
Siaya	3	5826
Nyeri	2	5473
Kericho	2	5405
Kitui	2	4629
Murang'a	1	4147
Kakamega	9	3826
Meru	0	3818
Kisii	6	3241
Bungoma	5	3057
Laikipia	2	2990

County	Imported	Local
Makueni	3	2918
Nyandarua	2	2827
Migori	22	2825
Garissa	5	2527
Embu	0	2476
Turkana	22	2407
Trans nzoia	1	2227
Nandi	0	2188
Kirinyaga	1	2111
Homabay	6	1940
Taita taveta	9	1838
Baringo	1	1617
Nyamira	0	1589
Bomet	0	1521
Narok	2	1297
Tharaka nithi	0	1177
Kwale	16	1158
Vihiga	2	1020
Marsabit	0	934
Lamu	0	750
Isiolo	2	745
West pokot	0	719
Elgeyo marakwet	0	503
Tana river	0	387
Mandera	5	379
Samburu	0	312
Wajir	17	278



1.10 Map of Kenya showing COVID-19 attack rate by County per 100,000 population

Nairobi City County has the highest attack rate of 2920 per 100,000 population followed by Mombasa County at 1470 per 100,000 population (Figure 10).

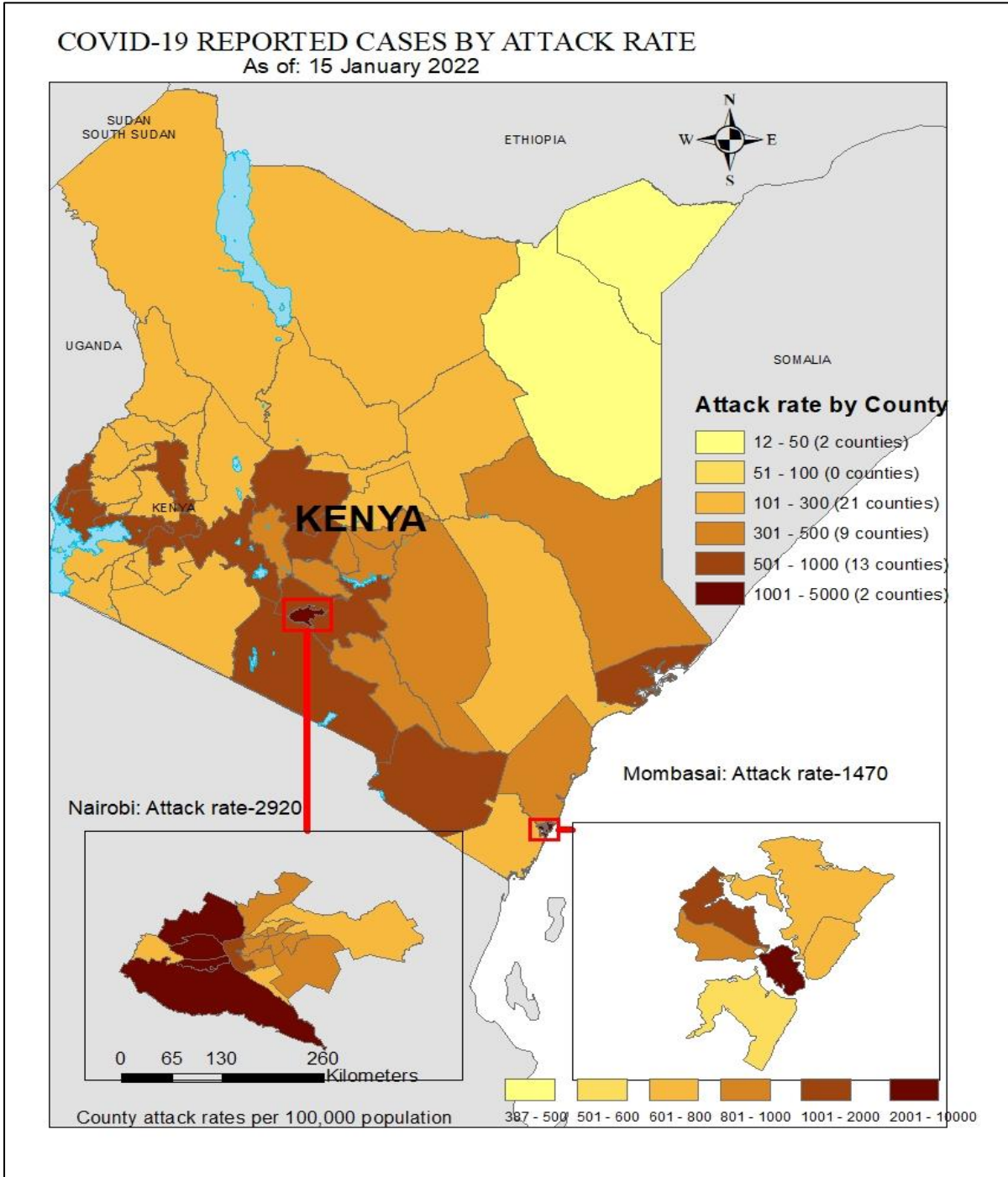


Figure 10: County Attack Rate per 100,000 Population



1.11 Map of Kenya showing COVID-19 caseload by County

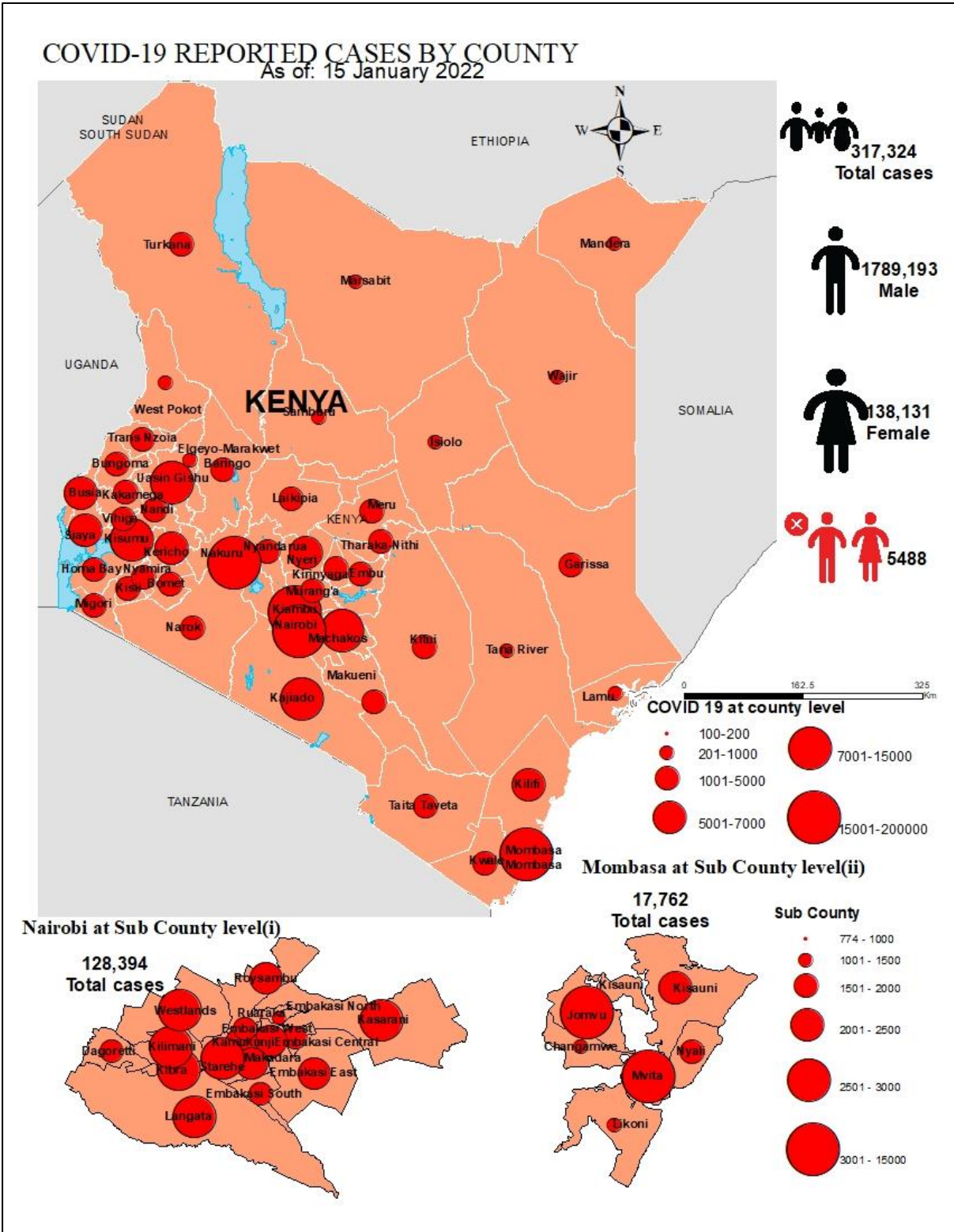
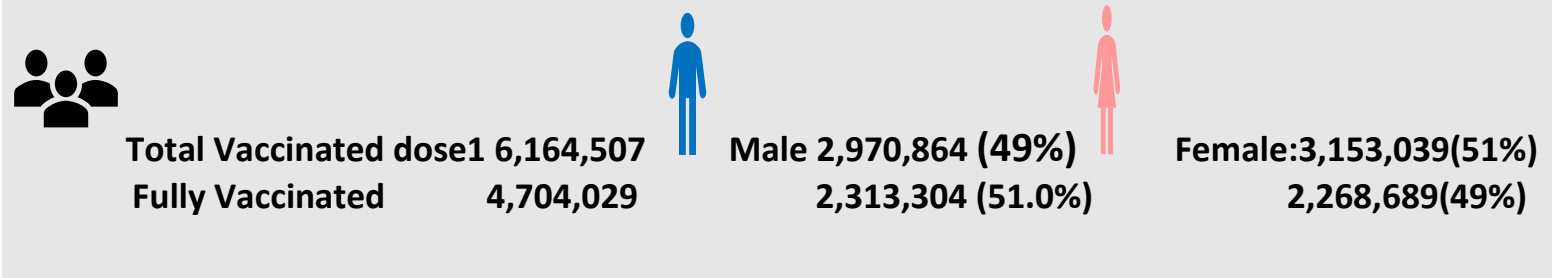


Figure 11: County Attack Rate per 100,000 Population

1.12 Kenya COVID-19 Vaccination Updates



The Kenya Ministry of Health launched the National COVID-19 vaccinations on the 5th March 2021 after receiving **1,120,000** doses of the AstraZeneca Vaccine through the COVID-19 Vaccines Global Access (COVAX) facility. As of 13th January 2022, a total of **6,164,507 persons** were vaccinated with the 1st dose and **4,704,029 persons** being fully vaccinated, targeting frontline workers, teachers, security officers, and those above 58 years of age. 51% of those vaccinated with the 1st dose were females and 49% were male. 51% of those fully vaccinated were males and 49% were female. Others (intersex/transgender) constituted 2,501 in the 1st dose and 1,846 were fully vaccinated. (Figure 12).

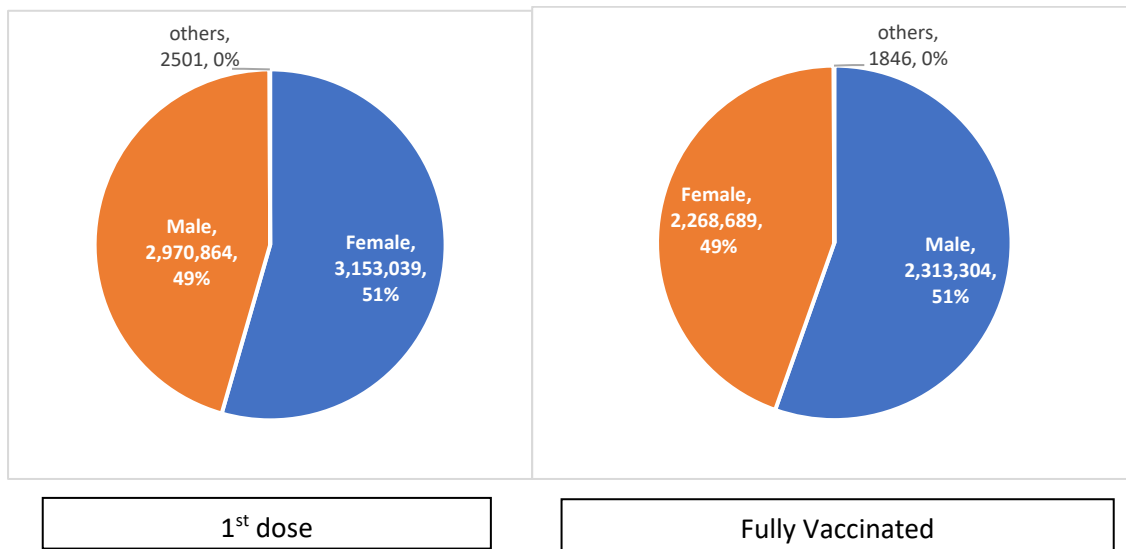


Figure 12: Sex Distribution of persons Vaccinated

The highest proportion of the population fully vaccinated was in Nairobi County at 36.3% and the least was in Tana River County (4.10%) (Table 2).

Table 2: Distribution of 2nd doses and proportion of fully Vaccinated by County

County	Vaccinations dose 2	Target population above 18 years	Proportion of fully vaccinated population	County	Vaccinations dose 2	Target population above 18 years	Proportion of fully vaccinated population
Nairobi	1,109,334	3,052,494	36.30%	Elgeyo Marakwet	32,250	243,690	13.20%
Nyeri	172,064	510,028	33.70%	Meru	124,612	949,186	13.10%
Laikipia	84,200	306,448	27.50%	Makueni	72,760	584,379	12.50%
Kiambu	394,575	1,623,545	24.30%	Baringo	37,584	338,937	11.10%
Kakamega	229,023	982,838	23.30%	Nandi	52,248	492,652	10.60%
Taita Taveta	44,351	213,335	20.80%	Busia	49,325	465,190	10.60%
Uasin Gishu	137,422	693,570	19.80%	Migori	54,845	557,657	9.80%
Muranga	131,656	675,364	19.50%	Kisii	66,623	697,445	9.60%
Nyandarua	73,378	376,776	19.50%	Samburu	13,762	145,608	9.50%
Machakos	169,261	905,172	18.70%	Kwale	38,350	451,261	8.50%
Nakuru	237,878	1,273,265	18.70%	Homa Bay	50,815	608,326	8.40%
Kirinyaga	76,583	413,708	18.50%	Isiolo	10,665	133,358	8.00%
Vihiga	59,295	329,317	18.00%	Kitui	48,983	624,506	7.80%
Kisumu	116,010	656,147	17.70%	West Pokot	17,949	283,727	6.30%
Mombasa	139,910	804,202	17.40%	Garissa	25,070	399,358	6.30%
Bungoma	144,911	843,735	17.20%	Bomet	29,111	465,963	6.20%
Embu	67,696	395,980	17.10%	Kilifi	48,978	784,567	6.20%
Kajiado	111,159	663,201	16.80%	Marsabit	13,529	219,170	6.20%
Trans Nzoia	78,965	518,077	15.20%	Mandera	20,262	341,857	5.90%
Tharaka Nithi	34,885	246,699	14.10%	Narok	32,150	548,229	5.90%
Kericho	71,479	508,980	14.00%	Wajir	16,774	337,296	5.00%
Siaya	75,202	536,031	14.00%	Turkana	22,940	468,878	4.90%
Nyamira	47,446	341,397	13.90%	Tana River	6,176	151,051	4.10%
Lamu	11,466	83,433	13.70%	Total	4,703,910	27,246,033	17.30%

The proportion of health care workers who were fully vaccinated as of 13th January 2022 was highest at 83.7% as shown below.

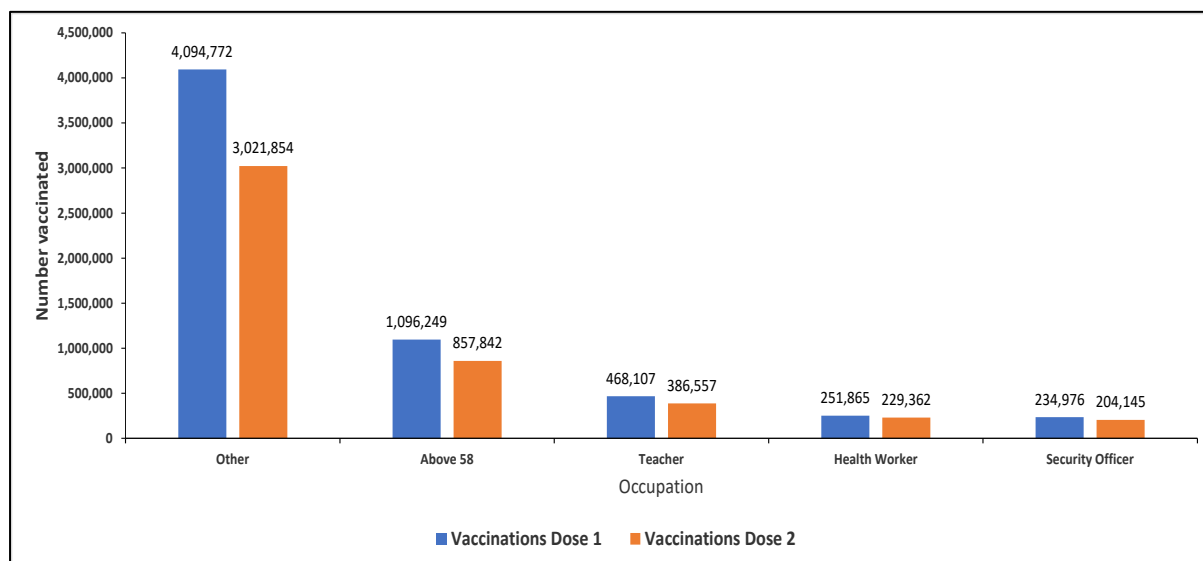


Figure 13: Distribution of persons Vaccinated with 1st and 2nd dose by Occupation

Table 3: Distribution of fully vaccinated persons by priority group

Priority group	Johnson and Johnson	Dose 2 uptake	Fully vaccinated (Dose 2 uptake+Johnson & Johnson)	Dose 1 uptake	% Fully vaccinated
Health Workers	18,576	210,786	229,362	251,865	83.70%
Security Officers	26,360	177,785	204,145	234,976	75.70%
Teachers	37,253	349,304	386,557	468,107	74.60%
Above 58 years old	159,438	698,404	857,842	1,096,249	63.70%
Others	892,730	2,129,124	3,021,854	4,094,772	52.00%
Total	1,138,626	3,565,403	4,704,029	6,164,507	57.80%

Seventeen (17.3) percent of the phase 1 targets have so far been fully vaccinated with 110.0% of the health care workers Vaccinated for dose 2 (Table 3).

Table 4: Progress towards meeting targets: Kenya, 13th January 2022

Occupation	Fully Vaccinated	Target	% Fully Vaccinated
Health Workers	229,362	208,418	110.0%
Security Officers	204,145		
Teachers	386,557	330,671	80.4%
Above 58 years old	857,842	2,594,585	33.1%
Others	3,021,854		
Total	4,704,029	27,246,033	17.3%

Vaccine LOGISTICS 13th January 2022

Table 5: Current Vaccines Stocks Status

Location	Quantities (Doses)
National (CVS Kitengela)	7,222,520
Total distributed to 9 regional depots	16,057,300
Total	23,279,820 Inclusive: AstraZeneca (GOK- 1,020,000, India-100,000, MOH South Sudan- 72,000, Denmark-2,769,100, UK-817,040, Greece-180,000, Canada, US-459,300, Latvia-55,200, Poland-211,200, Slovakia- 160,000, COVAX France- 401,900, Netherlands-2,292,000, COVAX Germany-2,592,000, Argentina- 400,000) J&J (GOK-1,804,800, Germany- 4,291,200, USA- 1,176,000) Moderna (USA-1,760,780, Spain-564,480) PFIZER (USA-2,822,040) Sinopharm (China-200,000).

Table 6: Vaccine Doses Dispensed as of 13th January 2022

Vaccine	Total doses Administered
Total 1st doses (All vaccines)	6,164,507
Fully vaccinated	4,704,029
Booster doses	80,607
Total doses (All Vaccines + Sputnik)	10,974,305
First Dose 15-18 years (Pfizer)	25,754
% of adults fully vaccinated	17.3%

2.0 KEY ACTIONS

2.1 Coordination

- Response efforts continue to be coordinated through a whole government and multi-agency approach following Executive Order No. 2 of 2021 issued by His Excellency the President on 26th March 2021.
- The National Emergency Response Committee that was constituted following the executive order meets regularly to provide policy directions on response efforts towards the COVID-19 outbreak.
- The Public Health Emergency Operations Centre is fully activated and continues to coordinate response measures as well as provide daily situation reports informing planning.

2.2 Case Management and Infection Prevention & Control

- In the last 24 hours, 1,144 COVID-19 patients (Health Facility: 215, HBIC: 929) recovered and were discharged bringing the total number of recoveries and discharges for COVID- 281,343 (Facility: 51,086, HBIC: 230,257).
- Currently, there are 43 COVID-19 cases admitted in the intensive care unit; 2 on supplemental oxygen; 41 on ventilatory support, and 0 under observation.
- The total number of health workers infected is **12,526 (29 new cases)** with 53 mortalities (**no new death**) reported in all 47 counties.

2.3 Surveillance and laboratory and Point of Entry

- The Diagnostic capacity in the Country has been scaled up. A total of eighty-eight (88) public and private laboratories in thirteen (13) counties (Nairobi, Kisumu, Mombasa, Kilifi, Wajir, Kericho, Uasin Gishu, Machakos, Busia, Nakuru, Kajiado, Trans Nzoia, and Mandera) are currently conducting confirmatory tests for COVID-19.
- In the last 24 hours, 7,045 samples were tested across various laboratories of who six hundred and twenty-four (624) samples turned positive for COVID-19. A total of 3,143,862 cumulative tests have so far been conducted.
- Mandatory screening of cargo vessel crew is ongoing at all points of entry to minimize the risk of importation of additional cases from other affected countries.
- Port Health Services at all points of entry and other stakeholders' measures have been put in place to ensure the safety of travelers and traders in line with Ministry of Health guidelines on social distancing, hand washing, sanitizing, and enhanced temperature screening, disinfection of facilities, and sensitization of staff.

3.0 KEY CHALLENGES

- Stigmatization and discrimination on COVID-19 suspects affecting willingness to seek testing and management of cases likely to lead to further spread of the disease.
- Commodity insecurity at the sub-national level of both personal protective equipment and laboratory reagents at COVID – 19 testing laboratories.
- There is a shortage of sampling kits across several counties affecting testing of suspected cases, contacts, and limiting overall access to testing.
- Inadequate resources to facilitate critical response pillars limiting response capacity in detecting, investigating, contact tracing, and follow-up of cases.

4.0 NEXT STEPS

- Strengthen enforcement of public health measures across the country as directed by the President.
- There is a need to streamline cross-country coordination to address issues around the borders especially those counties bordering neighboring countries.
- Strengthening the contact tracing in the sub-counties.
- Strengthen commodity security of personal protective equipment at the sub-national level.
- Strengthen diagnostic quality assurance system

Emergency Operation Center:

Telephone: 0729 471 414, 0732 353 535, 0800 721316(Toll Free)
COVID-19 Call center: *719# (short message only), 719 (Audio)
COVID-19 Dashboard: https://khro.health.go.ke/#/covid_19_tracker
Email: manager.eockenya@gmail.com



5.0 KEY ACTIONS

5.1 Coordination

2.2 Case Management and Infection Prevention & Control

3.0 Surveillance and laboratory and point of Entry

4.0 Risk Communication

5.0 KEY CHALLENGES

6.0 NEXT STEPS

Emergency Operation Center:

Telephone: 0729 471 414, 0732 353 535, 0800 721316(Toll Free)

COVID-19 Call center: *719# (short message only), 719 (Audio)

Email: manager.eockenya@gmail.com