



COVID-19 OUTBREAK IN KENYA

DAILY SITUATION REPORT - 691

1. KEY HIGHLIGHTS

- Fifty-three (53)** new confirmed COVID-19 cases were reported in the last 24 hours bringing the total number of confirmed cases in Kenya to **322096 cases** as of 06 February 2022. Counties reporting new cases are **Nairobi (22), Nakuru (10), Machakos (6), Kiambu (5), Kakamega (3), Siaya (2), Uasin Gishu (2), Migori (1), Mombasa (1) and Tharaka Nithi (1).**
- Fourteen (14) deaths have been reported over the last 24 hrs.** The total number of deaths reported since the beginning of the outbreak is **5621, case fatality rate (CFR) is 1.7%**
- As of today, **forty-seven (47) counties** have reported cases namely: Nairobi (130228), Kiambu (20127), Mombasa (17887), Nakuru (16947), Uasin Gishu (10507), Kisumu (7782), Machakos (7601), Kajiado (7589), Kilifi (6983), Busia (6531), Siaya (6402), Nyeri (5844), Kericho (5761), Kitui (4889), Murang'a (4438), Kakamega (4189), Meru (4080), Kisii (3710), Migori (3345), Laikipia (3213), Bungoma (3138), Makueni (3071), Nyandarua (2982), Garissa (2657), Turkana (2651), Embu (2626), Trans Nzoia (2346), Nandi (2345), Kirinyaga (2257), Homa bay (2106), Nyamira (2073), Taita Taveta (2037), Baringo (1681), Bomet (1678), Narok (1370), Kwale (1333), Tharaka Nithi (1237), Vihiga (1089), Marsabit (997), West pokot (854), Lamu (770), Isiolo (768), Elgeyo Marakwet (529), Mandera (424), Tana river (409), Samburu (315), and Wajir (300).
- Nairobi city** and **Mombasa** Counties have the highest attack rates of COVID-19 at **2961.7** and **1480.3** per **100,000** population respectively when compared to **677.2/100,000** for the whole country and need enhanced interventions. In addition, the COVID-19 outbreak has so far spread to **100%** of the counties in the country.
- Three hundred and five thousand six hundred and fifty-five - 305655 (95%) of the 322096 confirmed cases** are local transmissions.
- In the last 24 hours, 4,054 samples were tested across various laboratories of which fifty-three (53) samples turned positive for COVID-19. A total of 3,258,097 cumulative tests have so far been conducted.**
- In the last 24 hours, 274 COVID-19 patients (Health Facility: 13, HBIC: 261) recovered and were discharged bringing the total number of recoveries and discharges for COVID- 295,971 (Facility: 52,599, HBIC: 243,372).**

Total Cases =322096	Male = 181643 Female = 140453	Deaths =5621
--------------------------------------	--	-------------------------------

1.1 Epidemiology

Since 13 March 2020 when the first case was confirmed in Kenya, a total of **322096** confirmed cases and **5621** have deaths giving a case fatality rate of **1.7%** have been line-listed. Of these, 305655 cases (95%) were local transmissions and 16439 (5%) are imported cases. Figure 1 below shows the trends of cases.

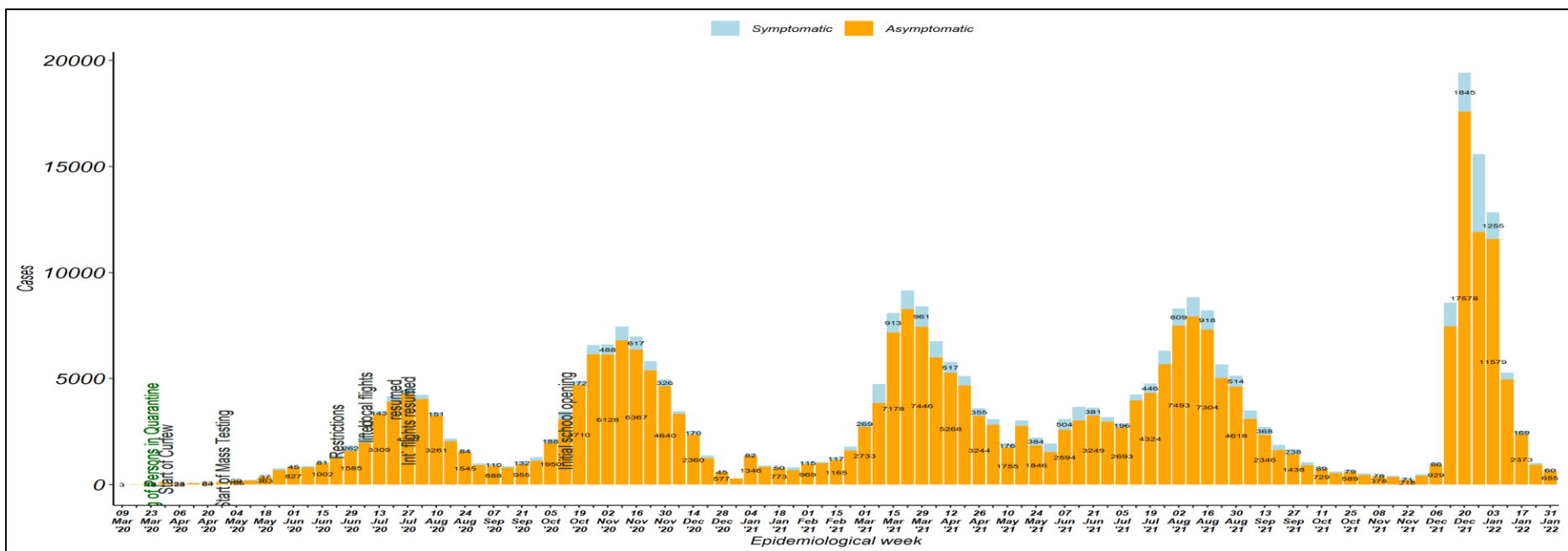


Figure 1: Trends of COVID-19 Outbreak Kenya



1.2 The trends of COVID-19 deaths

A total of **5621** cases died since the beginning of the outbreak giving a case fatality rate of **1.7%**. Figure 2 shows the trend of COVID-19 deaths by week.

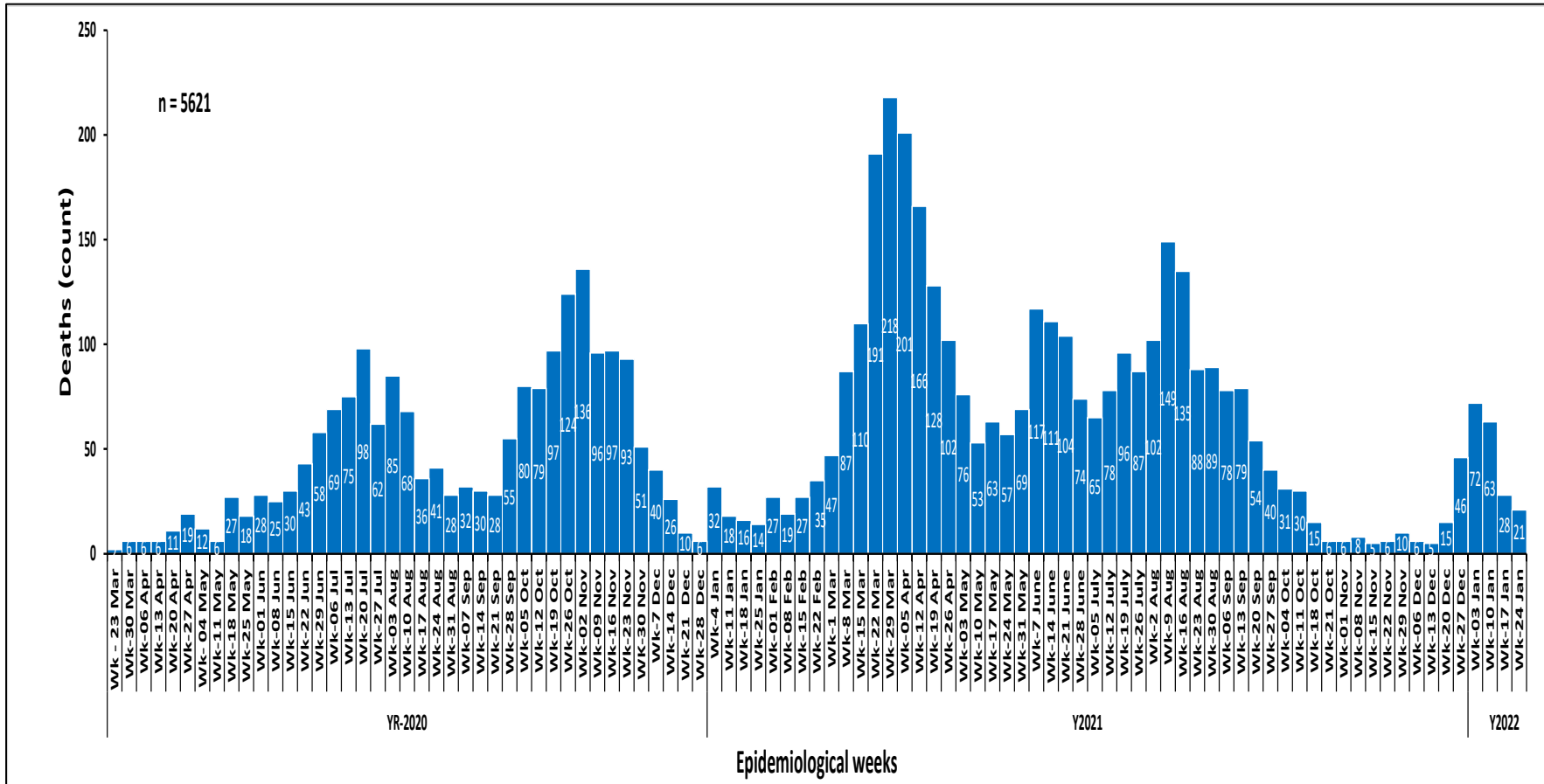


Figure 2: Fatalities by week



1.3 National caseload vs Nairobi county caseload

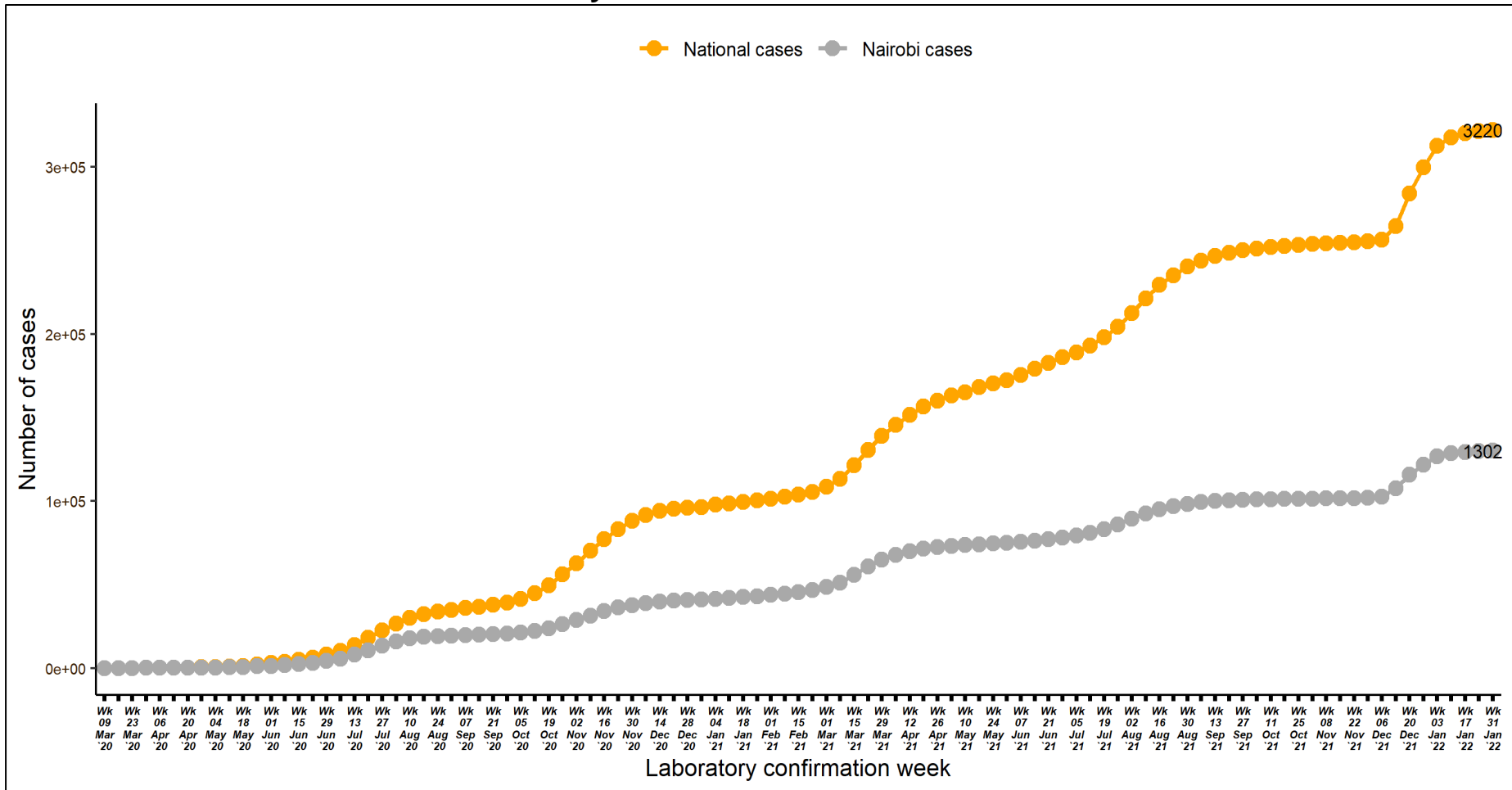


Figure 3: Cumulative cases by week of confirmation. Comparing National cases and Nairobi county cases



1.4 Laboratory testing

WHO recommends that one of the indicators that the pandemic is under control, is when < 5% of samples tested are positive for COVID-19 for the past 2 weeks, assuming that surveillance for suspected cases is comprehensive and testing rate of suspect cases, is optimum at least 1/1000 population/week. The laboratory test rate currently stands at **47259.3** samples per 1,000,000 people. Figure 4 shows the weekly testing rate/1000 population/week.

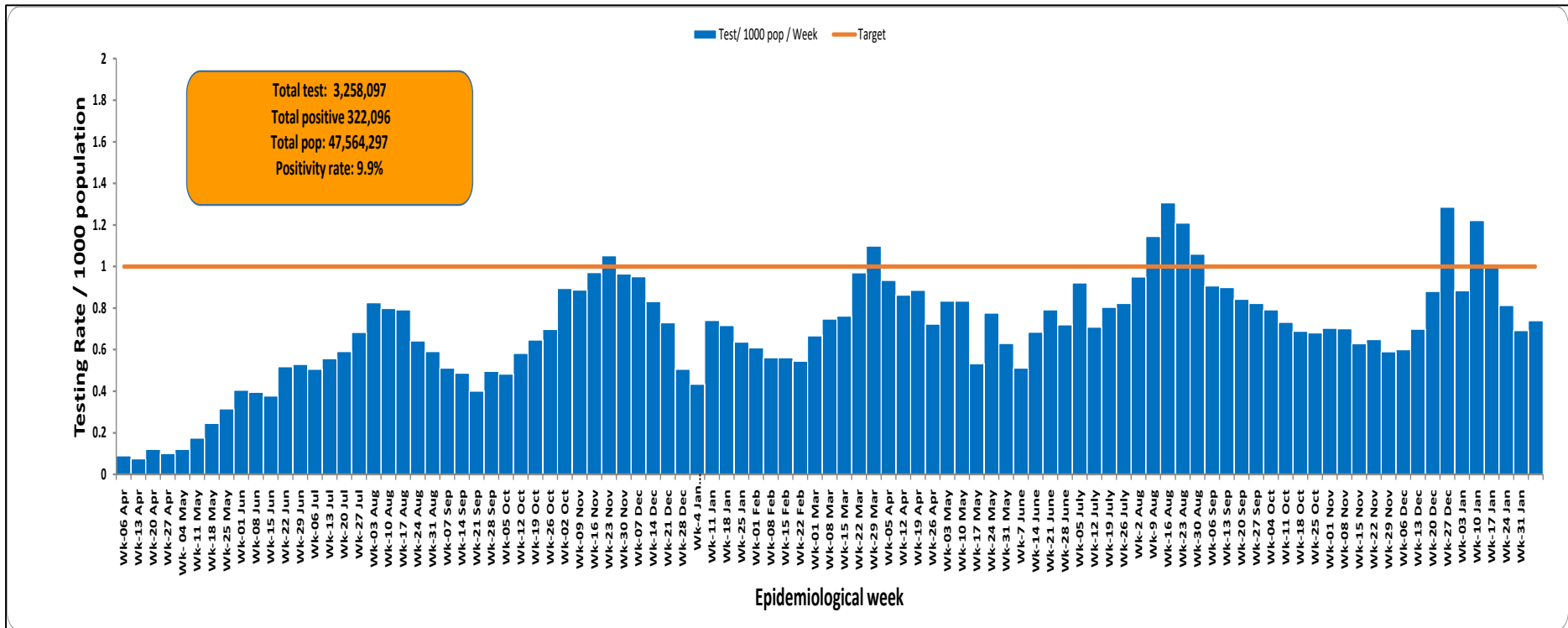


Figure 4: Laboratory Tests Conducted by Date Results were Shared



1.5 Distribution of Confirmed COVID-19 Cases by Presentation and Presentation of Symptoms among Symptomatic cases

Of the **322096** confirmed cases, 32590(10%) presented with symptoms (Figure 5). Cough (52%) and Fever (33%) were predominant presenting symptoms.

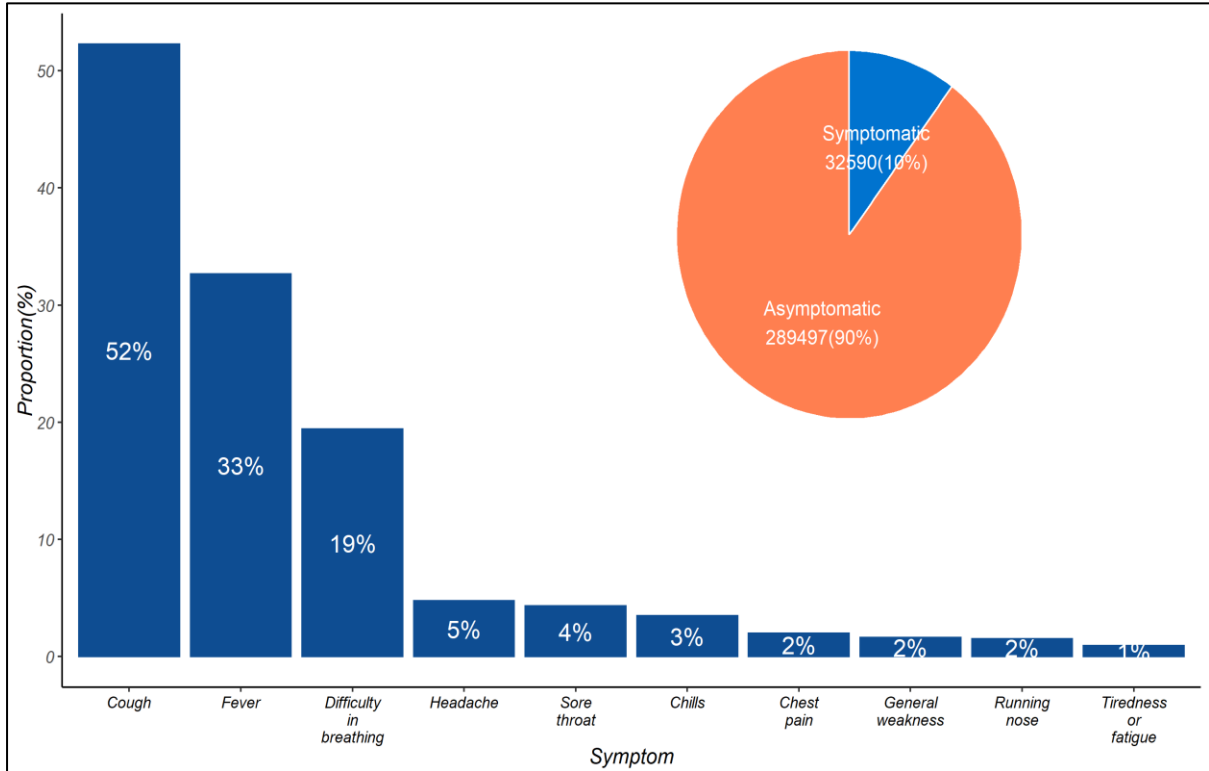


Figure 5: Distribution of Presenting Symptoms among Symptomatic COVID-19 Cases



1.6 Age and Sex Distribution of COVID Confirmed Cases and Deaths

One hundred and eighty-one thousand six hundred and forty-three (56%) are males and 140453 (44%) are females. Most of the cases; 83229 (26%), are in the age group of 30-39 years. Figure 6 below shows the age and sex distribution of COVID-19 cases.

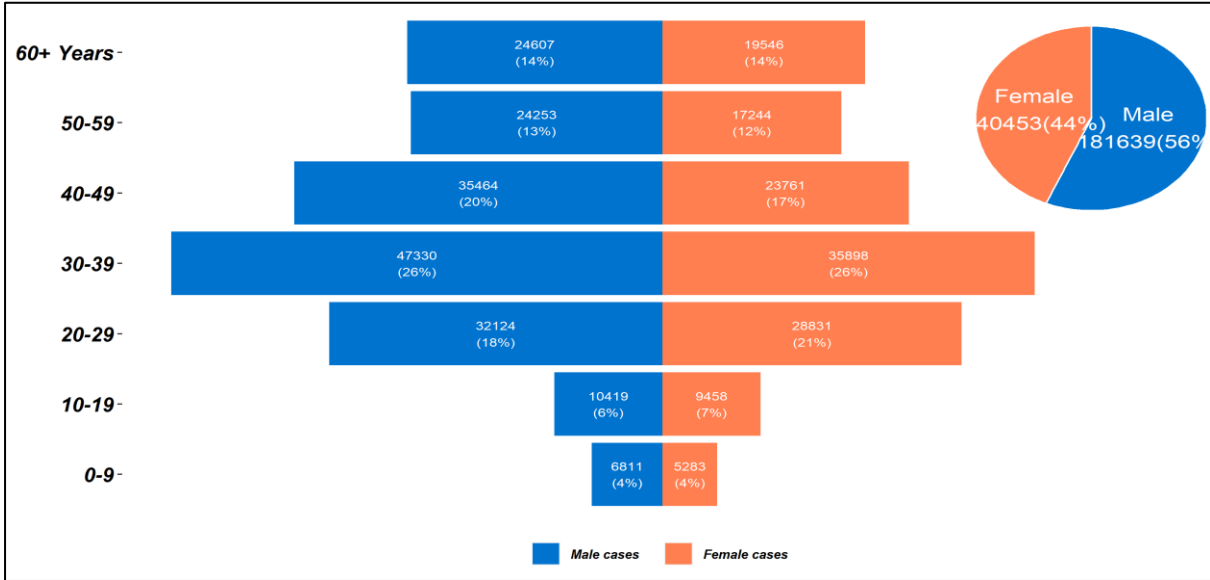


Figure 6: Age and Sex Distribution of COVID-19 Cases Kenya

A total of 5621 deaths have been reported so far, 3580 (64%) being males and 2041 (36%) being females (Figure 7).

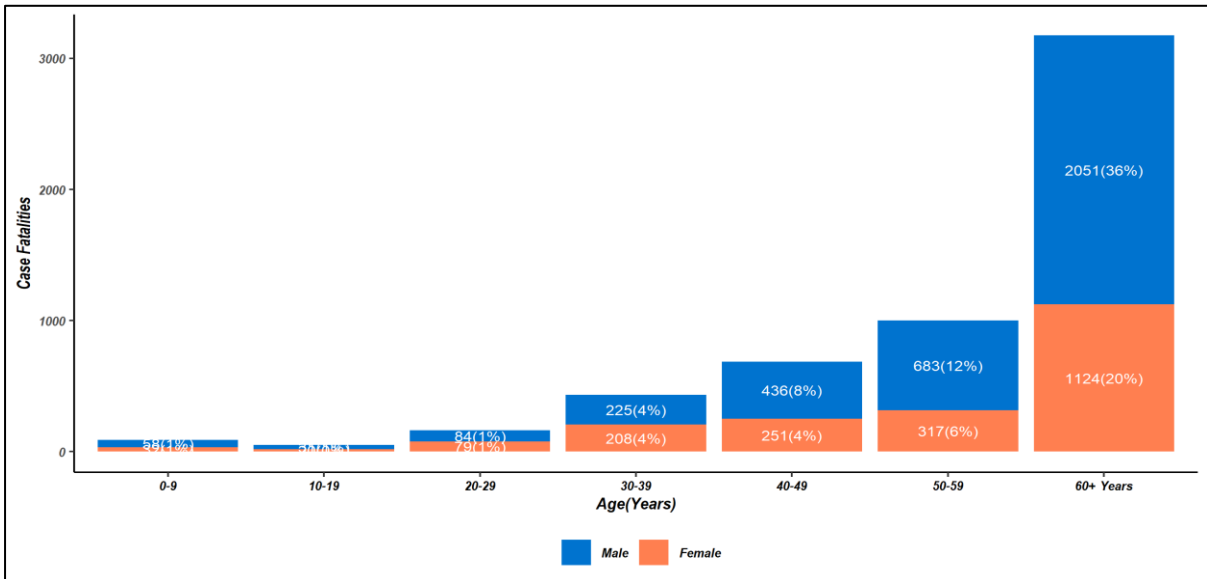


Figure 7: Distribution of Case Fatalities by Age and Sex

1.7 Trends of health care workers

Among the cases who had their occupation filled in, a cumulative of 12,696 health professionals (4 new cases) and 53 mortalities (No new deaths) have been reported in all the 47 counties

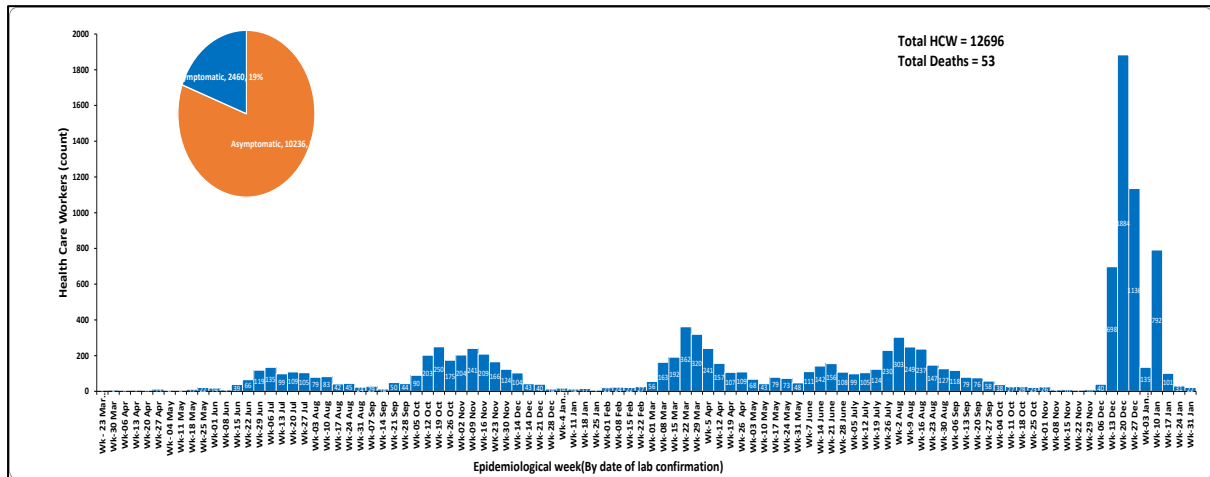


Figure 8: Covid-19 cases among health care workers

1.8 Figure 9 shows cases among health care workers by county

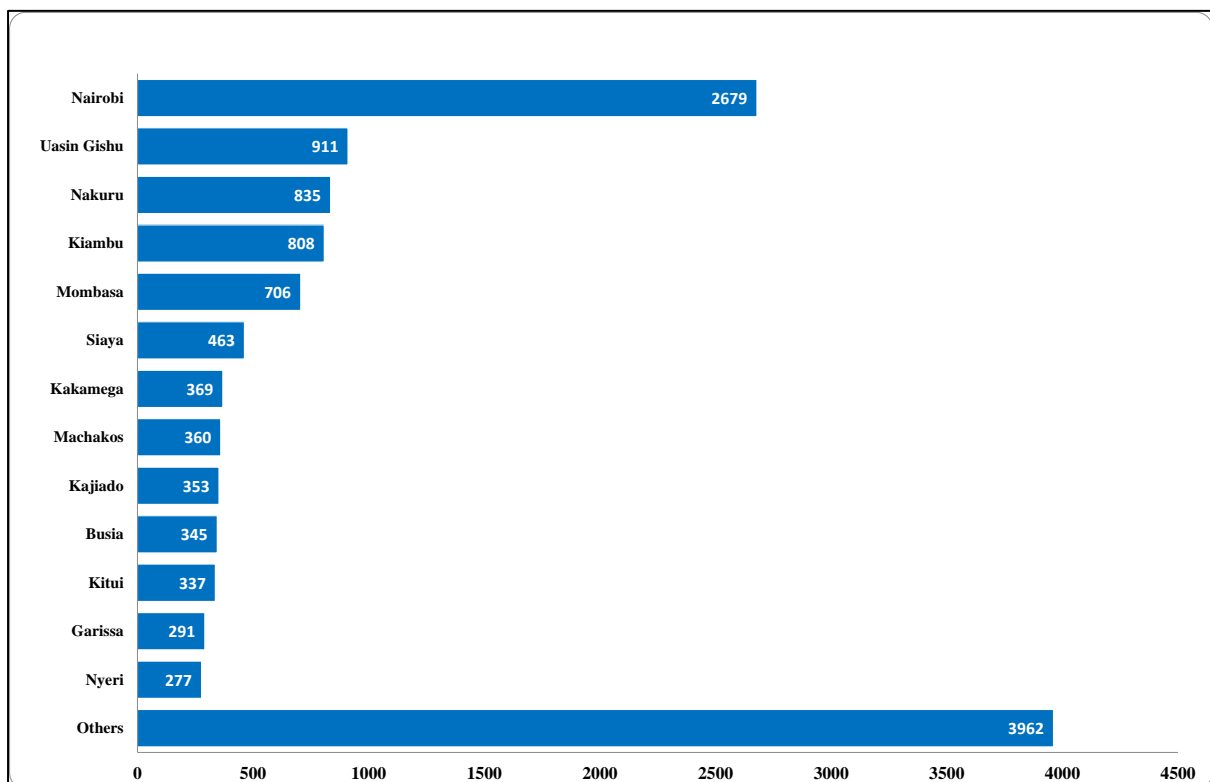


Figure 9: Health care workers cases by counties

Other counties reporting health care workers cases include – Kilifi (265), Kisumu(256), Migori (214), Turkana (213), Meru (211), Makueni(202), Taita Taveta(200), Kisii (186), Bungoma(178), Homa Bay(173), Murang’a(167), Nyandarua (164), Laikipia (149), Kirinyaga(142), Tharaka Nithi(134), West Pokot(129), Nandi(128), Kericho(112), Narok(93), Lamu(72), Embu(72), Isiolo(63), Marsabit (56), Nyamira (53), Tana River (50), Baringo(44), Bomet(42), Vihiga (38), Elgeyo Marakwet(34), Wajir(30), Kwale (25), Mandera(25), Trans Nzoia(23), Samburu (19).

1.9 Distribution of Confirmed COVID-19 Cases by County and Transmission Classification

Of the **322096** cases, 130226 (40%) are from Nairobi County followed by Kiambu County with 20127 (6%) as shown in Table 1.

Table 1: Distribution of confirmed COVID-19 Cases by County and transmission classification

County	Imported	Local
Nairobi	604	123938
Kiambu	37	19177
Mombasa	452	16892
Nakuru	39	15953
Uasin gishu	32	9907
Kisumu	19	7336
Machakos	12	7261
Kajiado	50	7257
Kilifi	20	6615
Busia	177	6246
Siaya	3	5969
Nyeri	2	5549
Kericho	2	5450
Kitui	3	4726
Murang'a	1	4189
Kakamega	9	3901
Meru	0	3836
Kisii	6	3565
Bungoma	5	3071

County	Imported	Local
Laikipia	2	3041
Makueni	3	2953
Migori	22	2882
Nyandarua	2	2859
Garissa	5	2560
Embu	0	2508
Turkana	22	2447
Trans nzoia	1	2273
Nandi	0	2216
Kirinyaga	1	2144
Homabay	6	2015
Nyamira	0	1980
Taita taveta	9	1867
Baringo	1	1634
Bomet	0	1621
Narok	2	1305
Tharaka nithi	0	1193
Kwale	16	1192
Vihiga	3	1036
Marsabit	0	956
Lamu	0	753
West pokot	0	751
Isiolo	2	749
Elgeyo marakwet	0	516
Tana river	0	389
Mandera	8	387
Samburu	0	312
Wajir	17	278



1.10 Map of Kenya showing COVID-19 attack rate by County per 100,000 population

Nairobi City County has the highest attack rate of 2961.7 per 100,000 population followed by Mombasa County at 1480.3 per 100,000 population (Figure 10).

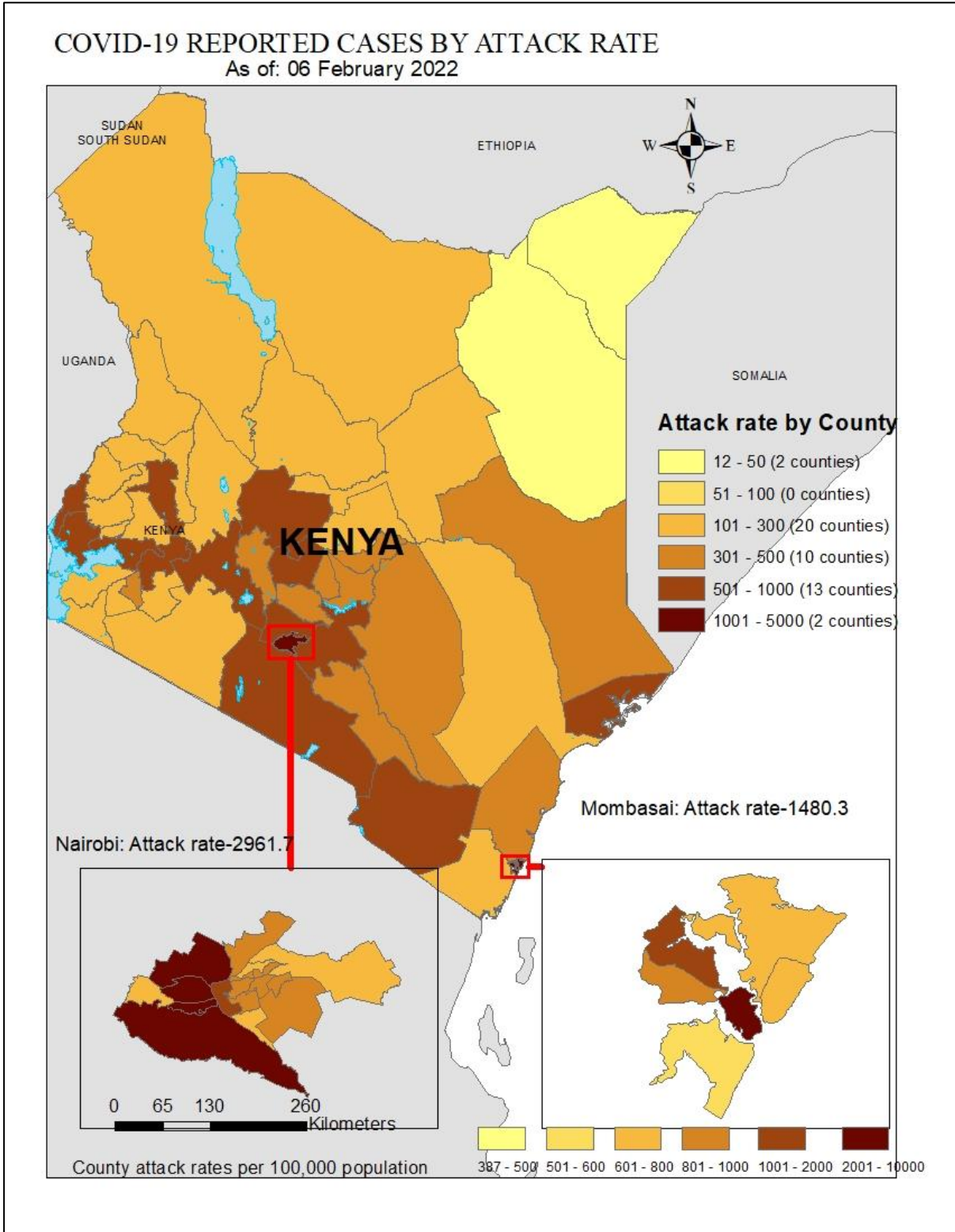


Figure 10: County Attack Rate per 100,000 Population



1.11 Map of Kenya showing COVID-19 caseload by County

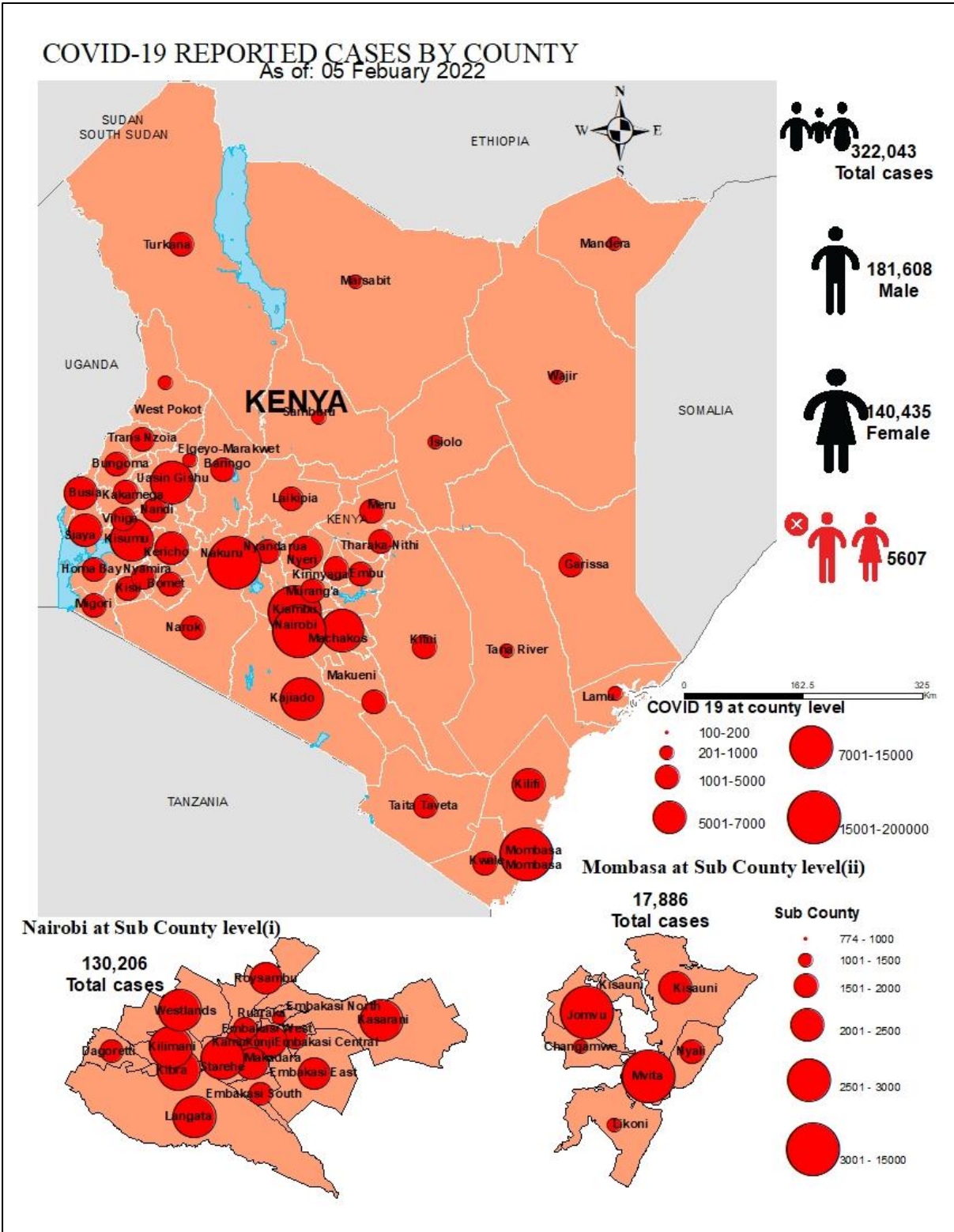


Figure 11: County Attack Rate per 100,000 Population

1.12 Kenya COVID-19 Vaccination Updates



Partially vaccinated: Adults- 6,910,914
Fully Vaccinated: Adults- 6,241,813
Booster Doses: - 187,517



15 to 17 years- 246,273
15 to 17 years- 12,553

The Kenya Ministry of Health launched the National COVID-19 vaccinations on the 5th March 2021 after receiving **1,120,000** doses of the AstraZeneca Vaccine through the COVID-19 Vaccines Global Access (COVAX) facility. As of 5th February 2022, a total of **6,910,914 persons** were vaccinated with the 1st dose and **6,241,813 persons** being fully vaccinated.

Table 2: Vaccine Doses Dispensed as of 5th February 2022

Vaccine	Total doses Administered
Total 1st doses (All vaccines, >18yrs)	6,910,914
Fully vaccinated (>18yrs)	6,241,813
Booster doses	187,517
Total doses (All Vaccines + Sputnik)	13,599,070
Partially Vaccinated 15-17 years	246,273
Fully Vaccinated 15-17 years	12,553
% of adults fully vaccinated	22.90%

The highest proportion of population fully vaccinated was in Nyeri County at 43.2% and the least was in Wajir County (6.5%) (Table 3).

Table 3: Distribution of 2nd doses and proportion of fully Vaccinated by County

County	Vaccinations dose 2	Target population above 18 years	Proportion of fully vaccinated population	County	Vaccinations dose 2	Target population above 18 years	Proportion of fully vaccinated population
Nyeri	220,115	510,028	43.2%	Kisii	123,213	697,445	17.7%
Nairobi	1,291,429	3,052,494	42.3%	Migori	97,480	557,657	17.5%
Laikipia	96,134	306,448	31.4%	Makueni	100,590	584,379	17.2%
Kiambu	488,771	1,623,545	30.1%	Elgeyo Marakwet	40,818	243,690	16.7%
Kakamega	292,233	982,838	29.7%	Lamu	13,805	83,433	16.5%
Taita Taveta	61,056	213,335	28.6%	Nandi	79,184	492,652	16.1%
Kisumu	175,223	656,147	26.7%	Busia	73,660	465,190	15.8%
Kirinyaga	108,454	413,708	26.2%	Baringo	53,634	338,937	15.8%
Uasin Gishu	181,700	693,570	26.2%	Homa Bay	91,694	608,326	15.1%
Vihiga	84,296	329,317	25.6%	Samburu	18,117	145,608	12.4%
Nyandarua	96,077	376,776	25.5%	Kwale	52,335	451,261	11.6%
Nakuru	317,153	1,273,265	24.9%	Kitui	70,777	624,506	11.3%
Muranga	167,177	675,364	24.8%	West Pokot	29,168	283,727	10.3%
Bungoma	206,696	843,735	24.5%	Isiolo	13,538	133,358	10.2%
Machakos	217,207	905,172	24.0%	Turkana	46,437	468,878	9.9%
Embu	91,446	395,980	23.1%	Kilifi	74,669	784,567	9.5%
Tharaka Nithi	55,157	246,699	22.4%	Bomet	44,230	465,963	9.5%
Mombasa	179,248	804,202	22.3%	Narok	50,257	548,229	9.2%
Siaya	118,465	536,031	22.1%	Garissa	36,189	399,358	9.1%
Nyamira	73,679	341,397	21.6%	Marsabit	17,977	219,170	8.2%
Trans Nzoia	110,114	518,077	21.3%	Mandera	24,788	341,857	7.3%
Kajiado	139,701	663,201	21.1%	Tana River	10,670	151,051	7.1%
Meru	187,205	949,186	19.7%	Wajir	21,952	337,296	6.5%
Kericho	97,895	508,980	19.2%	TOTAL	6,241,813	27,246,033	22.9%

Vaccine LOGISTICS 5th February 2022

Table 4: Current Vaccines Stocks Status

Location	Quantities (Doses)
National (CVS Kitengela)	3,739,460
Total distributed to 9 regional depots	17,426,200
Total	24,648,720

2.0 KEY ACTIONS

2.1 Coordination

- Response efforts continue to be coordinated through a whole government and multi-agency approach following Executive Order No. 2 of 2021 issued by His Excellency the President on 26th March 2021.
- The National Emergency Response Committee that was constituted following the executive order meets regularly to provide policy directions on response efforts towards the COVID-19 outbreak.
- The Public Health Emergency Operations Centre is fully activated and continues to coordinate response measures as well as provide daily situation reports informing planning.

2.2 Case Management and Infection Prevention & Control

- In the last 24 hours, 274 COVID-19 patients (Health Facility: 13, HBIC: 261) recovered and were discharged bringing the total number of recoveries and discharges for COVID- 295,971 (Facility: 52,599, HBIC: 243,372).
- Currently, there are 7 COVID-19 cases admitted in the intensive care unit; 0 on supplemental oxygen; 7 on ventilatory support, and 0 under observation.
- The total number of health workers infected is **12,692 (5 new cases)** with 53 mortalities (**no new death**) reported in all 47 counties.

2.3 Surveillance and laboratory and Point of Entry

- The Diagnostic capacity in the Country has been scaled up. A total of eighty-eight (88) public and private laboratories in thirteen (13) counties (Nairobi, Kisumu, Mombasa, Kilifi, Wajir, Kericho, Uasin Gishu, Machakos, Busia, Nakuru, Kajiado, Trans Nzoia, and Mandera) are currently conducting confirmatory tests for COVID-19.
- In the last 24 hours, 4,054 samples were tested across various laboratories of who fifty-three (53) samples turned positive for COVID-19. A total of 3,258,097 cumulative tests have so far been conducted.
- Mandatory screening of cargo vessel crew is ongoing at all points of entry to minimize the risk of importation of additional cases from other affected countries.
- Port Health Services at all points of entry and other stakeholders' measures have been put in place to ensure the safety of travelers and traders in line with Ministry of Health guidelines on social distancing, hand washing, sanitizing, and enhanced temperature screening, disinfection of facilities, and sensitization of staff.

3.0 KEY CHALLENGES

- Stigmatization and discrimination on COVID-19 suspects affecting willingness to seek testing and management of cases likely to lead to further spread of the disease.
- Commodity insecurity at the sub-national level of both personal protective equipment and laboratory reagents at COVID – 19 testing laboratories.
- There is a shortage of sampling kits across several counties affecting testing of suspected cases, contacts, and limiting overall access to testing.
- Inadequate resources to facilitate critical response pillars limiting response capacity in detecting, investigating, contact tracing, and follow-up of cases.

4.0 NEXT STEPS

- Strengthen enforcement of public health measures across the country as directed by the President.
- There is a need to streamline cross-country coordination to address issues around the borders especially those counties bordering neighboring countries.

Emergency Operation Center:

Telephone: 0729 471 414, 0732 353 535, 0800 721316(Toll Free)
COVID-19 Call center: *719# (short message only), 719 (Audio)
COVID-19 Dashboard: https://khro.health.go.ke/#/covid_19_tracker
Email: manager.eockenya@gmail.com