



MINISTRY OF HEALTH

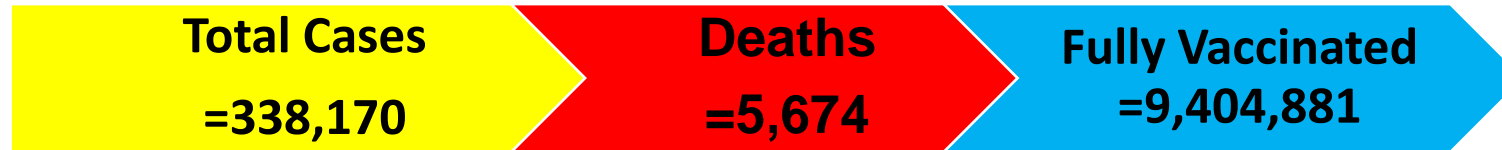
DATA AS REPORTED BY 1700 HOURS 30 August 2022

COVID-19 OUTBREAK IN KENYA

DAILY SITUATION REPORT – 896

1. KEY HIGHLIGHTS

- Five (5)** new confirmed COVID-19 cases were reported in the last 24 hours bringing the total number of confirmed cases in Kenya to **338,170 cases** as of **30th August 2022**. Counties reporting new cases are **Nairobi (3), Mombasa (1), and Uasin Gishu (1)**.
- Zero (0) deaths have been reported in the last 24 hours**. The total number of cumulative deaths reported since the beginning of the outbreak is **5674**, **case fatality rate (CFR) is 1.7%**
- All **47 counties** have cumulatively reported cases as follows: Nairobi (139,797), Kiambu (21,210), Mombasa (18,216), Nakuru (17,606), Uasin Gishu (10,780), Kisumu (7,950), Machakos (7,708), Kajiado (7,683), Kilifi (7,390), Siaya (7,108), Busia (6,621), Nyeri (6,185), Kericho (5,963), Kitui (5,248), Murang'a (4,652), Kakamega (4,252), Meru (4,142), Kisii (3,758), Migori (3,362), Laikipia (3,305), Bungoma (3,382), Makueni (3,102), Nyandarua (3,032), Garissa (2,758), Turkana (2,706), Embu (2,688), Trans Nzoia (2,430), Nandi (2,360), Kirinyaga (2,322), Homa Bay (2,154), Nyamira (2,116), Taita Taveta (2,060), Bomet (1,692), Baringo (1,697), Narok (1,395), Kwale (1,369), Tharaka Nithi (1,256), Vihiga (1,097), Marsabit (997), West Pokot (891), Lamu (779), Isiolo (776), Elgeyo Marakwet (532), Mandera (468), Tana River (469), Samburu (328), and Wajir (300).
- In epi-week **34, 2022**, **Kitui** and **Siaya** Counties had the highest attack rates of COVID-19 at **2.73** and **1.71** per **100,000** population respectively when compared to the national attack rate of **0.23/100,000** for the same epi-week.
- In the last 24 hours, **1,062 samples** were tested across various laboratories of which **five (5)** samples turned positive for COVID-19, a positivity rate of **0.5%**. Cumulatively, **3,854,643 tests** have been conducted.
- In the last 24 hours, **20** COVID-19 patients (**Health Facility: 0, HBIC: 20**) recovered and were discharged bringing the total number of recoveries and discharges to **332,370 (Facility: 53,601, HBIC: 278,769)**.



1.1 Epidemiology

Since 13th March 2020 when the first case was confirmed in Kenya, a total of **338,170** confirmed cases and **5,674** deaths (**CFR 1.7%**) have been line-listed. **Figure 1 and 2** below shows trends of cases and deaths for the last one year.

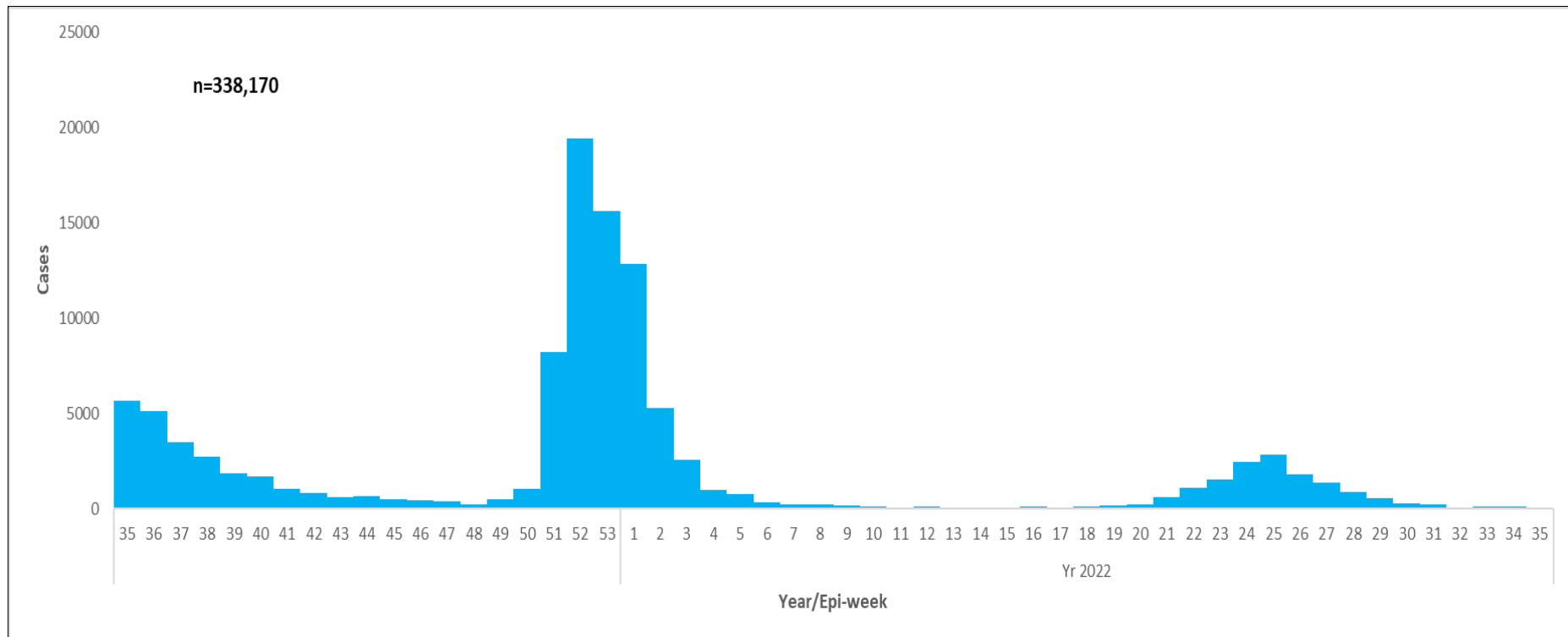


Figure 1: Trends of COVID-19 outbreak in Kenya in the last one year

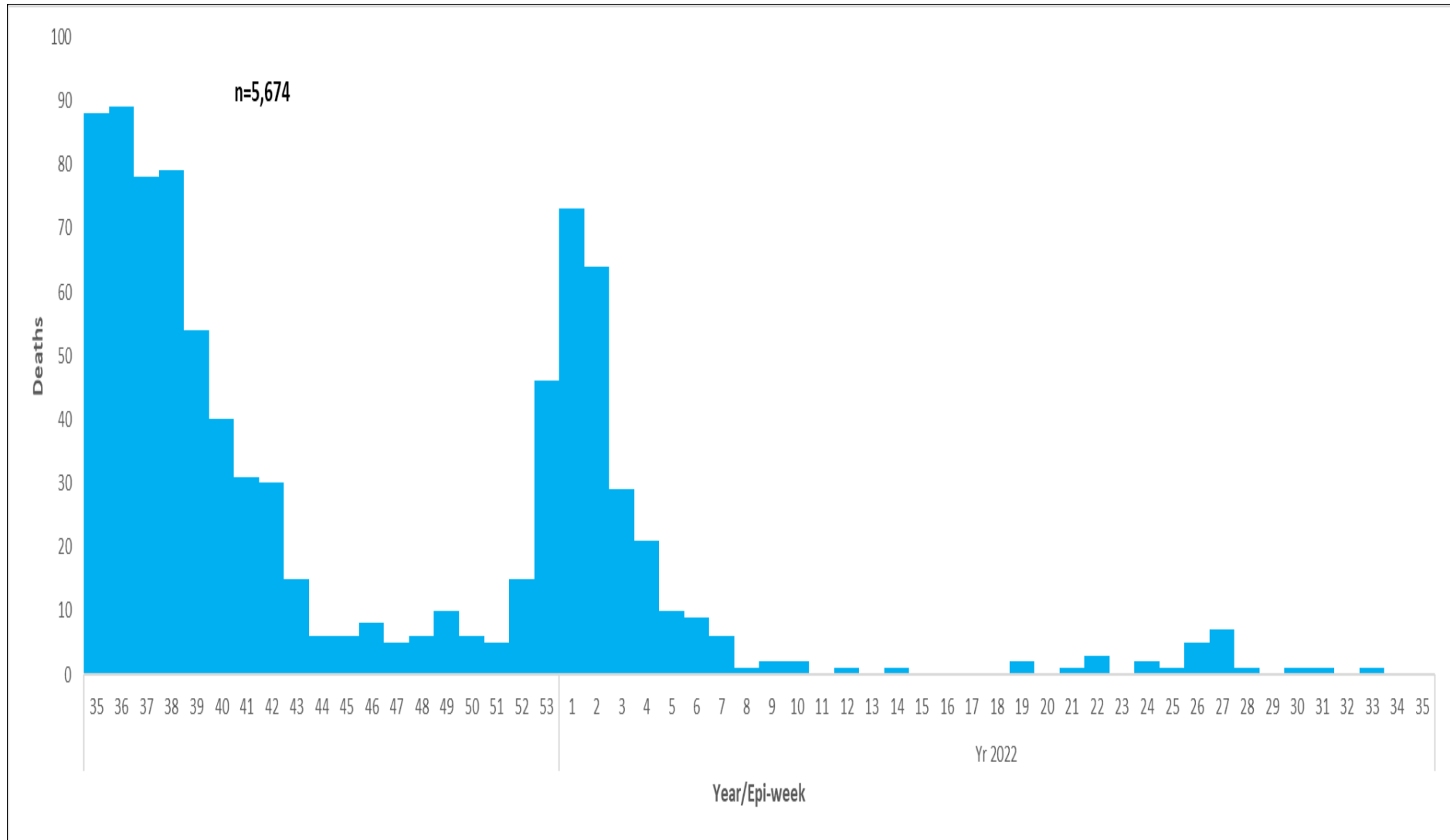


Figure 2: Trends of COVID-19 deaths in Kenya in the last one year

1.2 Laboratory testing

WHO recommends that one of the indicators that the pandemic is under control, is when < 5% of samples tested are positive for COVID-19 for the past 2 weeks, assuming that surveillance for suspected cases is comprehensive and the testing rate of suspect cases, is optimum at least 1/1000 population/week. The laboratory test rate currently stands at **81040.7** samples per 1,000,000 people. Figure 3 shows the weekly testing rate/1000 population/week for the last year.

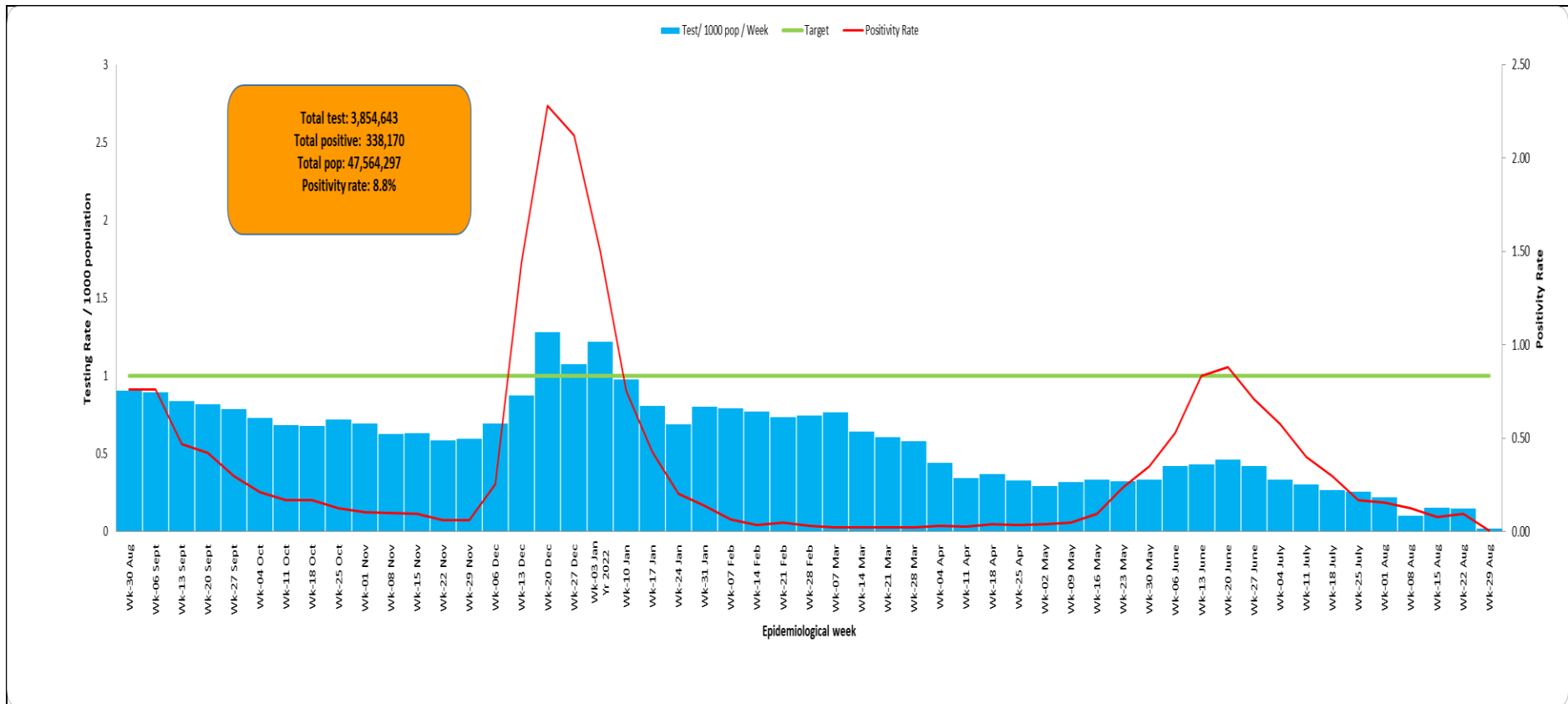


Figure 3: Laboratory Tests Conducted by Date Results were Shared

1.3 Age and Sex Distribution of COVID Confirmed Cases and Deaths

A total of **190,278 (56%)** of the cumulative cases are males and **147,891 (44%)** are females. Most cases, **87,163 (26%)** are in the age group of **30-39 years**. Of the **5674** cumulative deaths, **3,609 (64%)** are males and **2,065 (36%)** are females.

Figure 4 below shows the age and sex distribution of COVID-19 cases by the outcome.

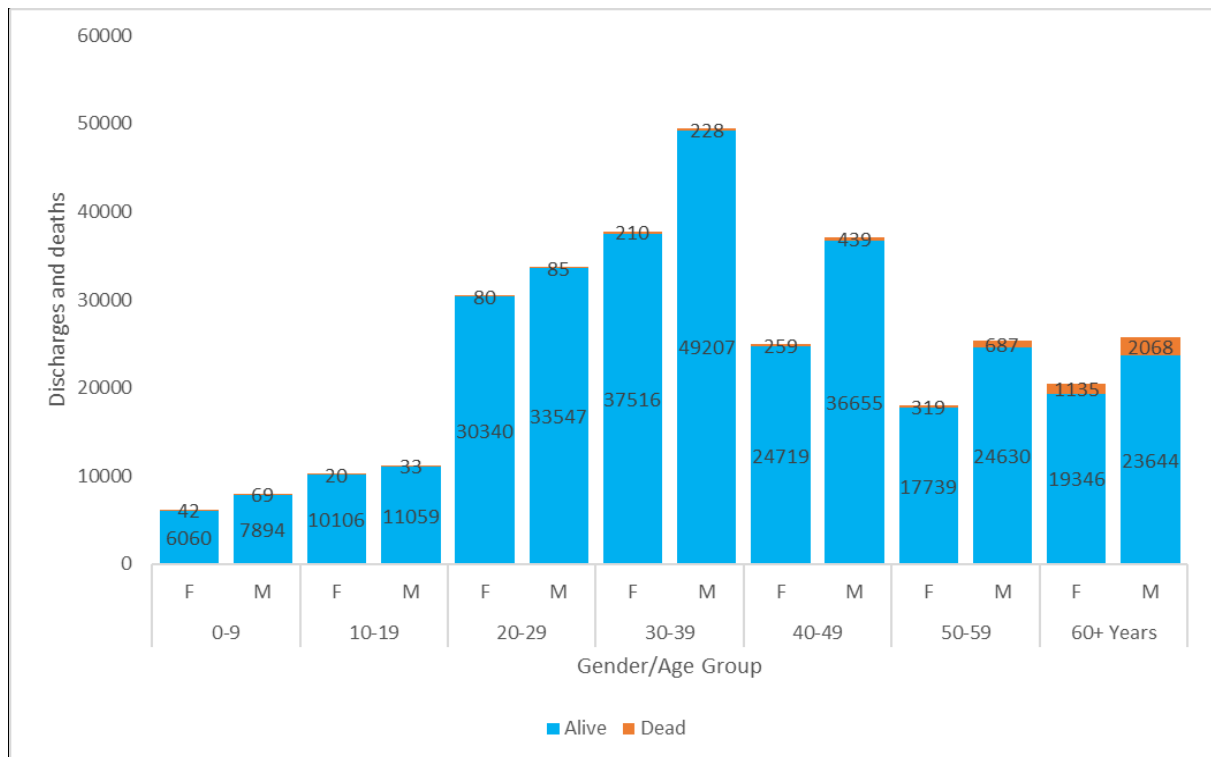


Figure 4: Age and Sex Distribution of COVID-19 Cases by the outcome in Kenya

1.4 Distribution of Confirmed COVID-19 Cases and Deaths by County of Diagnosis

Of the **338,170** cumulative cases, **139,797 (41.3%)** are from **Nairobi** County followed by **Kiambu** County with **21,210 (6.3%)**, while **Wajir** County recorded the lowest number of cases, **300 (0.09%)** as shown in Table 1.

Table 1: Distribution of confirmed COVID-19 Cases and deaths by County of Diagnosis

| County | Population | Covid-19 Cases | Attack Rates | Deaths | CFR |
|---------|------------|----------------|--------------|--------|------|
| Nairobi | 4397073 | 139797 | 3179.32 | 1557 | 1.11 |
| Kiambu | 2417735 | 21210 | 877.27 | 552 | 2.60 |
| Mombasa | 1208333 | 18216 | 1507.53 | 337 | 1.85 |
| Nakuru | 2162202 | 17606 | 814.26 | 538 | 3.06 |

| County | Population | Covid-19 Cases | Attack Rates | Deaths | CFR |
|-----------------|------------|----------------|--------------|--------|------|
| Uasin Gishu | 1163186 | 10848 | 932.61 | 243 | 2.24 |
| Kisumu | 1155574 | 7950 | 687.97 | 85 | 1.07 |
| Machakos | 1421932 | 7709 | 542.15 | 194 | 2.52 |
| Kajiado | 1117840 | 7684 | 687.40 | 77 | 1.00 |
| Kilifi | 1453787 | 7388 | 508.19 | 35 | 0.47 |
| Siaya | 993183 | 7109 | 715.78 | 120 | 1.69 |
| Busia | 893681 | 6621 | 740.87 | 53 | 0.80 |
| Nyeri | 759164 | 6185 | 814.71 | 176 | 2.85 |
| Kericho | 901777 | 5963 | 661.25 | 68 | 1.14 |
| Kitui | 1136187 | 5248 | 461.90 | 111 | 2.12 |
| Murang'a | 1056640 | 4652 | 440.26 | 230 | 4.94 |
| Kakamega | 1867579 | 4252 | 227.67 | 119 | 2.80 |
| Meru | 1545714 | 4141 | 267.90 | 114 | 2.75 |
| Kisii | 1266860 | 3761 | 296.88 | 112 | 2.98 |
| Migori | 1116436 | 3382 | 302.93 | 5 | 0.15 |
| Laikipia | 518560 | 3362 | 648.33 | 62 | 1.84 |
| Bungoma | 1670570 | 3305 | 197.84 | 26 | 0.79 |
| Makueni | 987653 | 3102 | 314.08 | 101 | 3.26 |
| Nyandarua | 638289 | 3032 | 475.02 | 67 | 2.21 |
| Garissa | 841353 | 2758 | 327.81 | 98 | 3.55 |
| Turkana | 926976 | 2706 | 291.92 | 24 | 0.89 |
| Embu | 608599 | 2688 | 441.67 | 62 | 2.31 |
| Trans Nzoia | 990341 | 2430 | 245.37 | 9 | 0.37 |
| Nandi | 885711 | 2361 | 266.57 | 34 | 1.44 |
| Kirinyaga | 610411 | 2322 | 380.40 | 76 | 3.27 |
| Homa Bay | 1131950 | 2154 | 190.29 | 99 | 4.60 |
| Nyamira | 605576 | 2116 | 349.42 | 18 | 0.85 |
| Taita Taveta | 340671 | 2060 | 604.69 | 42 | 2.04 |
| Baringo | 666763 | 1697 | 193.79 | 14 | 0.82 |
| Bomet | 875689 | 1692 | 253.76 | 29 | 1.71 |
| Narok | 1157873 | 1395 | 120.48 | 24 | 1.72 |
| Kwale | 866820 | 1369 | 157.93 | 11 | 0.80 |
| Tharaka Nithi | 393177 | 1256 | 319.45 | 8 | 0.64 |
| Vihiga | 590013 | 1097 | 185.93 | 30 | 2.73 |
| Marsabit | 459785 | 997 | 216.84 | 2 | 0.20 |
| West Pokot | 621241 | 891 | 143.42 | 1 | 0.11 |
| Lamu | 143920 | 779 | 541.27 | 13 | 1.67 |
| Isiolo | 268002 | 776 | 289.55 | 43 | 5.54 |
| Elgeyo Marakwet | 454480 | 532 | 117.06 | 10 | 1.88 |
| Mandera | 867457 | 469 | 54.07 | 1 | 0.21 |
| Tana River | 315943 | 468 | 148.13 | 36 | 7.69 |
| Samburu | 310327 | 328 | 105.69 | 1 | 0.30 |
| Wajir | 781263 | 300 | 38.40 | 6 | 2.00 |

1.5 Map of Kenya showing COVID-19 attack rate and by County per 100,000 population

In **Epi -week 34**, **Kitui** County recorded the highest attack rate of **2.73** followed by **Siaya** County at **1.71** per 100,000 population (Figure 5).

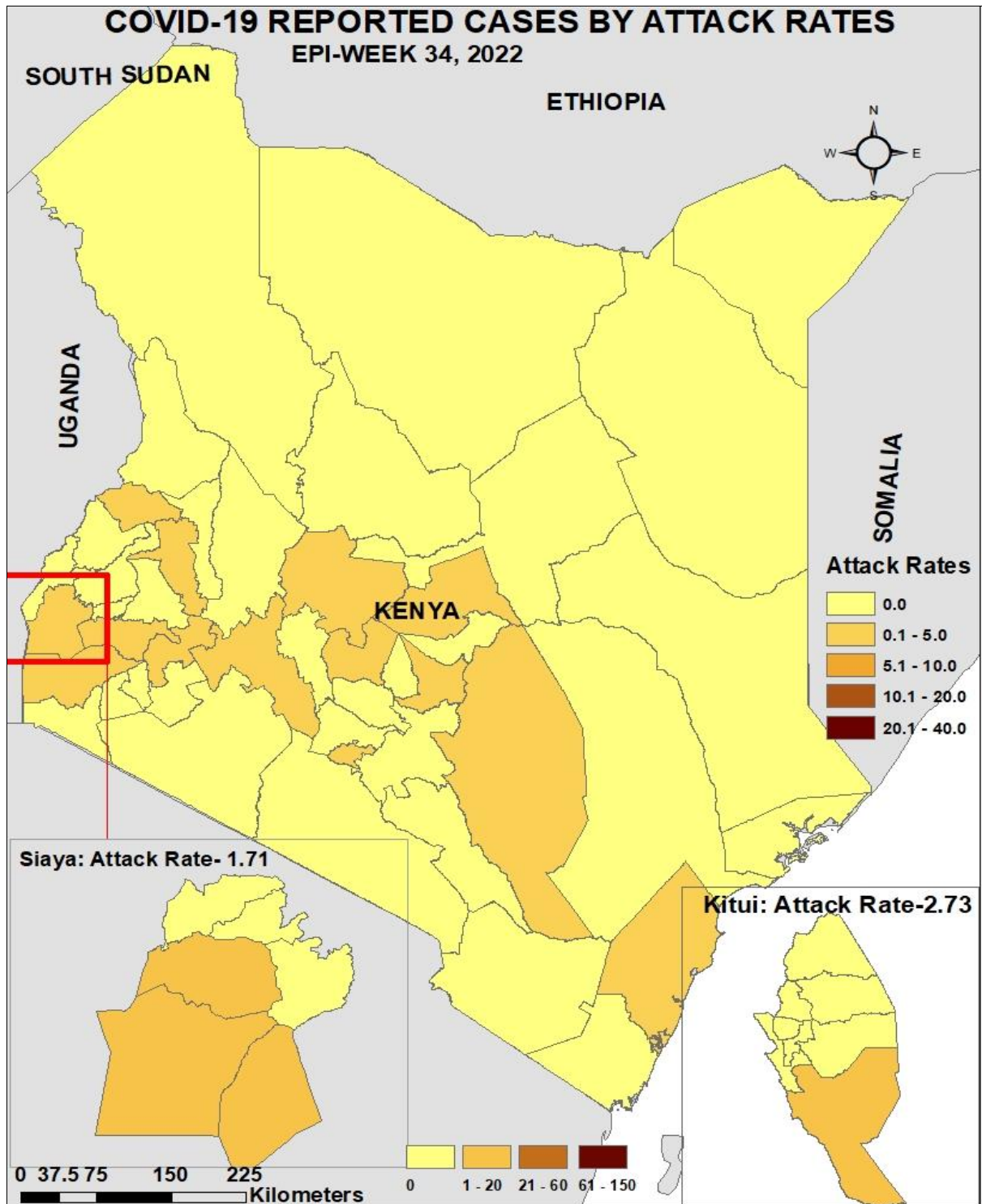


Figure 5: County Attack Rate per 100,000 Population

1.6 Map of Kenya showing COVID-19 caseload by County

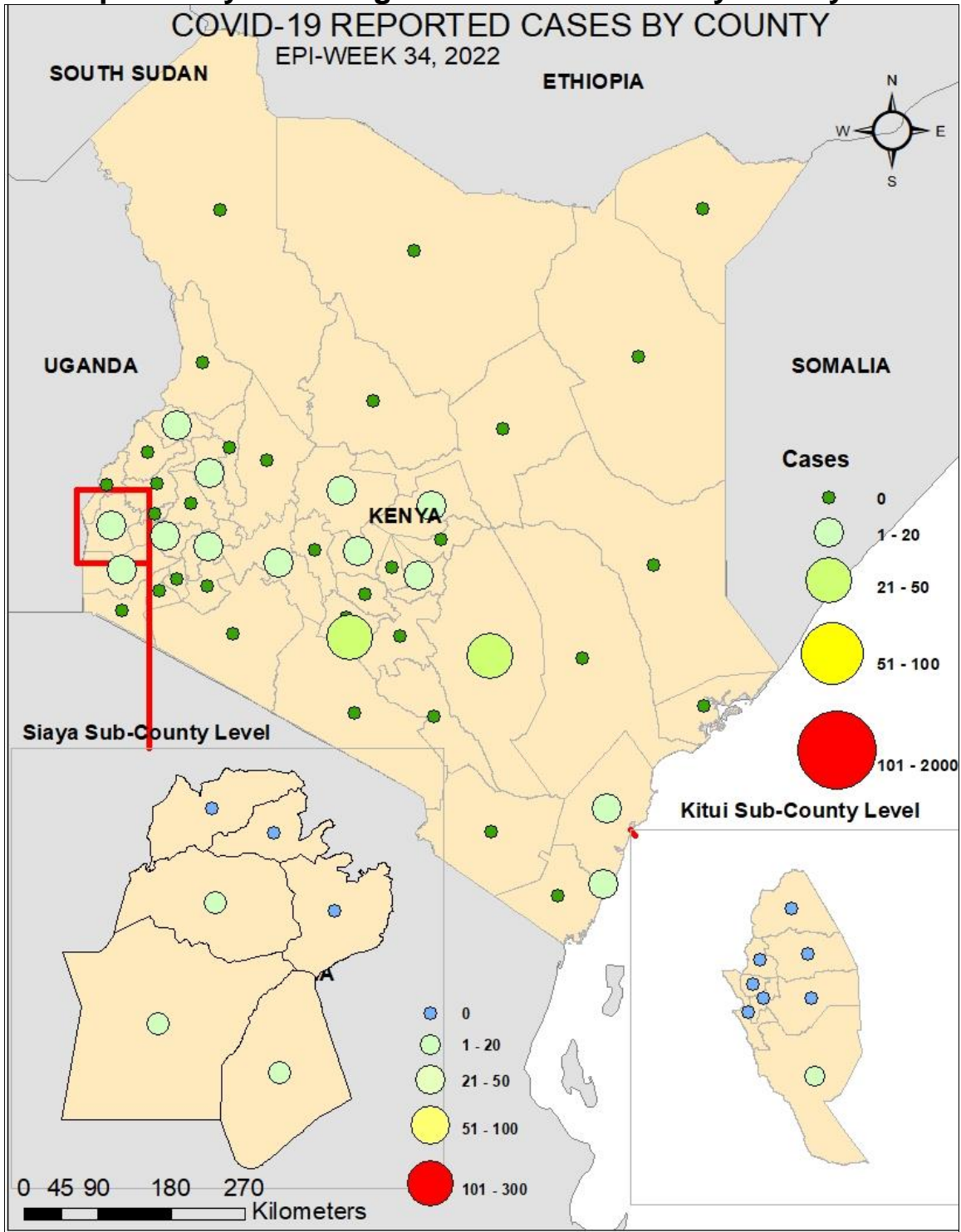


Figure 6 Case-loads by county

1.7 Kenya COVID-19 Vaccination Updates



Partially vaccinated: >18yrs- 2,281,111 **15 to <18 yrs- 882,062** **<15yrs- 336,789**
Fully Vaccinated: >18yrs- 9,404,881 **15 to <18 yrs- 516,229** **<15yrs- 22,315**
Booster Doses: >18yrs- 1,118,174

The Kenya Ministry of Health launched the National COVID-19 vaccinations on the 5th of March 2021. As of **28th August 2022**, a total of **2,281,111 persons** were vaccinated with the 1st dose, and **9,404,881 persons** were fully vaccinated.

Table 2: Vaccine Doses Dispensed as of 28th August 2022

| Vaccine | Total doses Administered |
|---|--------------------------|
| Partially vaccinated adults | 2,281,111 |
| Fully vaccinated adults | 9,404,881 |
| Booster doses | 1,118,174 |
| Total doses (All Vaccines + Sputnik) | 21,084,993 |
| Partially Vaccinated 15- below 18 years | 882,062 |
| Fully Vaccinated 15- below 18 years | 516,229 |
| Partially Vaccinated below 15 years | 336,789 |
| Fully Vaccinated below 15 years | 22,315 |
| % of adults fully vaccinated | 34.5% |

The highest proportion of the population fully vaccinated is in **Nyeri County** at **53.6%** and the least is **Marsabit County** at **10.4%** (Table 3).

Table 3: Proportion of fully Vaccinated by County, 28th August 2022

| County | Number of adults fully vaccinated | Target Population above 18 years | % of fully vaccinated adults | County | Number of adults fully vaccinated | Target Population above 18 years | % of fully vaccinated adults |
|------------------|-----------------------------------|----------------------------------|------------------------------|--------------------|-----------------------------------|----------------------------------|------------------------------|
| Nyeri | 273,192 | 510,028 | 53.6% | Bungoma | 279,522 | 843,735 | 33.1% |
| Nairobi | 1,597,784 | 3,052,494 | 52.3% | Nyandarua | 124,173 | 376,776 | 33.0% |
| Kisumu | 293,682 | 656,147 | 44.8% | Makueni | 192,008 | 584,379 | 32.9% |
| Siaya | 237,793 | 536,031 | 44.4% | Kericho | 166,407 | 508,980 | 32.7% |
| Kakamega | 434,677 | 982,838 | 44.2% | Meru | 282,518 | 949,186 | 29.8% |
| Nyamira | 141,630 | 341,397 | 41.5% | Elgeyo Marakwet | 66,826 | 243,690 | 27.4% |
| Nakuru | 518,376 | 1,273,265 | 40.7% | Nandi | 132,910 | 492,652 | 27.0% |
| Laikipia | 122,869 | 306,448 | 40.1% | Baringo | 84,904 | 338,937 | 25.1% |
| Migori | 220,721 | 557,657 | 39.6% | Lamu | 19,682 | 83,433 | 23.6% |
| Taita Taveta | 82,965 | 213,335 | 38.9% | Kitui | 138,916 | 624,506 | 22.2% |
| Homa Bay | 233,810 | 608,326 | 38.4% | Turkana | 102,890 | 468,878 | 21.9% |
| Kirinyaga | 157,439 | 413,708 | 38.1% | Samburu | 31,802 | 145,608 | 21.8% |
| Muranga | 253,870 | 675,364 | 37.6% | Kilifi | 136,859 | 784,567 | 17.4% |
| Kisii | 258,899 | 697,445 | 37.1% | Kwale | 78,222 | 451,261 | 17.3% |
| Trans Nzoia | 191,032 | 518,077 | 36.9% | Bomet | 76,594 | 465,963 | 16.4% |
| Kiambu | 594,614 | 1,623,545 | 36.6% | Narok | 84,855 | 548,229 | 15.5% |
| Machakos | 323,810 | 905,172 | 35.8% | West Pokot | 41,559 | 283,727 | 14.6% |
| Uasin Gishu | 242,715 | 693,570 | 35.0% | Garissa | 54,335 | 399,358 | 13.6% |
| Kajiado | 231,369 | 663,201 | 34.9% | Isiolo | 17,548 | 133,358 | 13.2% |
| Busia | 161,039 | 465,190 | 34.6% | Wajir | 37,371 | 337,296 | 11.1% |
| Vihiga | 113,992 | 329,317 | 34.6% | Tana River | 16,606 | 151,051 | 11.0% |
| Tharaka Nithi | 85,121 | 246,699 | 34.5% | Marsabit | 22,963 | 219,170 | 10.5% |
| Mombasa | 275,349 | 804,202 | 34.2% | Mandera | 35,563 | 341,857 | 10.4% |
| Embu | 133,100 | 395,980 | 33.6% | Total | 9,404,881 | 27,246,033 | 34.5% |

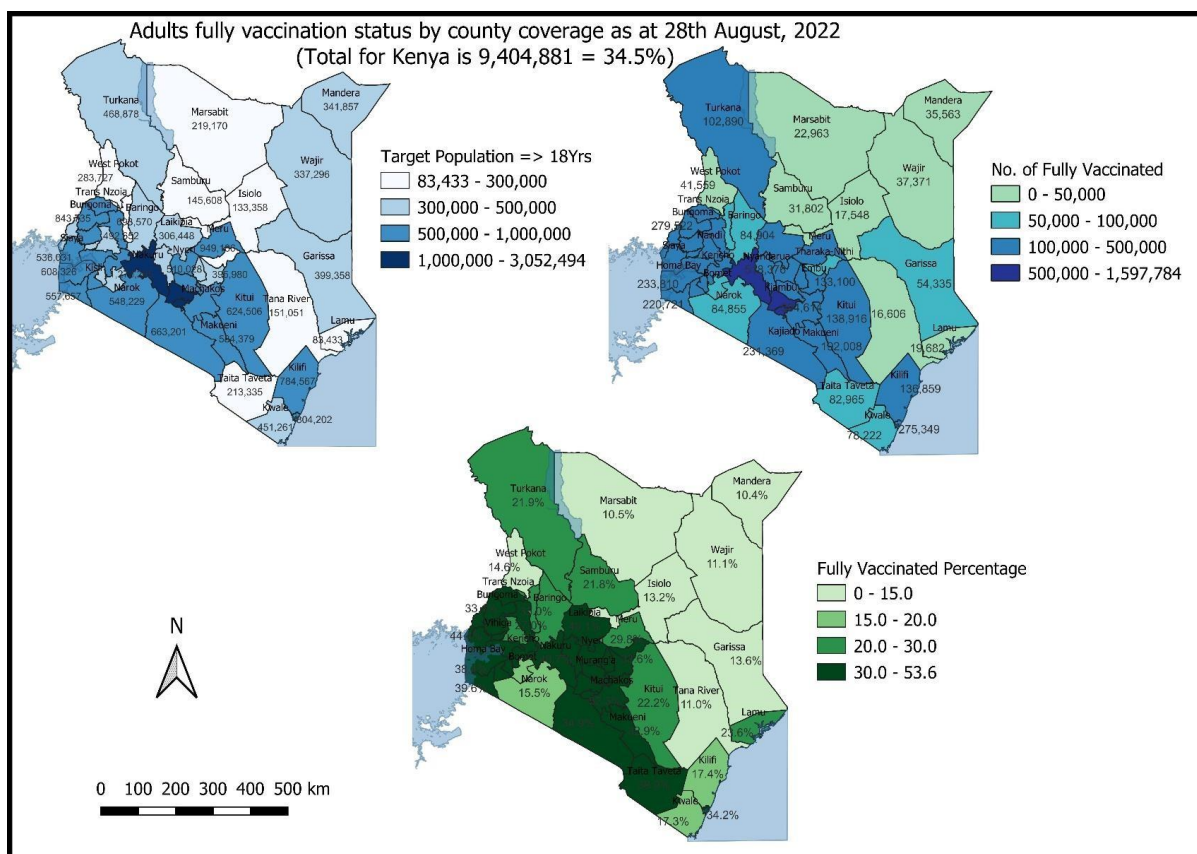


Figure 7: Adult full vaccination coverage by county

2.0 KEY ACTIONS

2.1 Coordination

- Response efforts continue to be coordinated through a whole government and multi-agency approach following Executive Order No. 2 of 2021 issued by His Excellency the President on 26th March 2021.
- The National Emergency Response Committee that was constituted following the executive order meets regularly to provide policy directions on response efforts towards the COVID-19 outbreak.
- The Public Health Emergency Operation Centre is fully activated and continues to coordinate response measures as well as provide daily situation reports informing planning.

2.2 Case Management and Infection Prevention & Control

- Currently, COVID-19 cases are being managed as inpatients and in home-based care
- One (1) COVID-19 case is currently admitted to the intensive care unit: one (1) on ventilatory support, zero (0) on supplemental oxygen, and zero (0) under observation.

- The IPC measures being implemented include: handwashing/sanitization, use of face masks in public transport, and social distancing in social places

2.3 Surveillance, laboratory, and Point of Entries

- The Diagnostic capacity in the Country has been scaled up. A total of ninety-six (96) public and private laboratories conduct PCR tests and 472 Rapid Diagnostic Tests (RDT). Genomic sequencing is done on sampled cases to identify new variants.
- Screening of cargo vessel crew at all points of entry to detect positive individuals.

3.0 KEY CHALLENGES

- Irregular reporting of COVID-19 data from counties/sub-counties to the national level
- High staff turn-over of trained personnel
- Suboptimal use of data in counties and sub-counties shared by national level for follow-up and decision making
- Inadequate resources to facilitate critical response pillars limiting response capacity in detecting, investigating, and follow-up of cases.

4.0 RECOMMENDATIONS AND NEXT STEPS

- Enhanced integrated disease surveillance at all levels
- Regular submission of daily COVID-19 data to the national level by counties
- Counties are encouraged to carry out investigations and institute control measures for areas with clustering of cases.
- Dissemination and utilization of data to make informed public health decisions at all levels
- Continuous capacity building of staff on surveillance

Emergency Operation Centre:

Telephone: 0729 471 414, 0732 353 535, 0800 721316(Toll Free)

COVID-19 Call centre: *719# (short message only), 719 (Audio)

COVID-19 Dashboard: https://khro.health.go.ke/#/covid_19_tracker

Email: manager.eockenya@gmail.com