



MINISTRY OF HEALTH

DATA AS REPORTED BY 1700 HOURS 13 September 2022

COVID-19 OUTBREAK IN KENYA

DAILY SITUATION REPORT – 910

1. KEY HIGHLIGHTS

- Six (6)** new confirmed COVID-19 cases were reported in the last 24 hours bringing the total number of confirmed cases in Kenya to **338,307 cases** as of **13th September 2022**. Counties reporting new cases are **Nairobi (5), and Kiambu (1)**.
- One (1) late death (deaths reported after auditing of facility records) has been reported in the last 24 hours.** The total number of cumulative deaths reported since the beginning of the outbreak is **5675, case fatality rate (CFR) is 1.7%**
- All **47 counties** have cumulatively reported cases as follows: Nairobi (139,890), Kiambu (21,222), Mombasa (18,216), Nakuru (17,609), Uasin Gishu (10,855), Kisumu (7,952), Machakos (7,709), Kajiado (7,686), Kilifi (7,388), Siaya (7,113), Busia (6,621), Nyeri (6,186), Kericho (5,964), Kitui (5,248), Murang'a (4,652), Kakamega (4,252), Meru (4,141), Kisii (3,761), Bungoma (3,382), Migori (3,362), Laikipia (3,305), Makueni (3,102), Nyandarua (3,032), Garissa (2,758), Turkana (2,710), Embu (2,688), Trans Nzoia (2,443), Nandi (2,361), Kirinyaga (2,322), Homa Bay (2,155), Nyamira (2,116), Taita Taveta (2,060), Baringo (1,697), Bomet (1,692), Narok (1,395), Kwale (1,369), Tharaka Nithi (1,256), Vihiga (1,097), Marsabit (997), West Pokot (891), Lamu (779), Isiolo (776), Elgeyo Marakwet (532), Tana River (469), Mandera (468), Samburu (328), and Wajir (300).
- In epi-week **36, 2022, Trans Nzoia** and **Nairobi City** Counties had the highest attack rates of COVID-19 at **1.0** and **0.8** per **100,000** population respectively when compared to the national attack rate of **0.1/100,000** for the same epi-week.
- In the last 24 hours, **827 samples** were tested across various laboratories of which **six (6)** samples turned positive for COVID-19, a positivity rate of **0.7%**. Cumulatively, **3,869,363 tests** have been conducted.
- In the last 24 hours, **20** COVID-19 patients (**Health Facility: 0, HBIC: 20**) recovered and were discharged bringing the total number of recoveries and discharges to **332,545 (Facility: 53,616, HBIC: 278,929)**.



1.1 Epidemiology

Since 13th March 2020 when the first case was confirmed in Kenya, a total of **338,307** confirmed cases and **5,675** deaths (CFR **1.7%**) have been line-listed. **Figure 1 and 2** below shows trends of cases and deaths for the last one year.

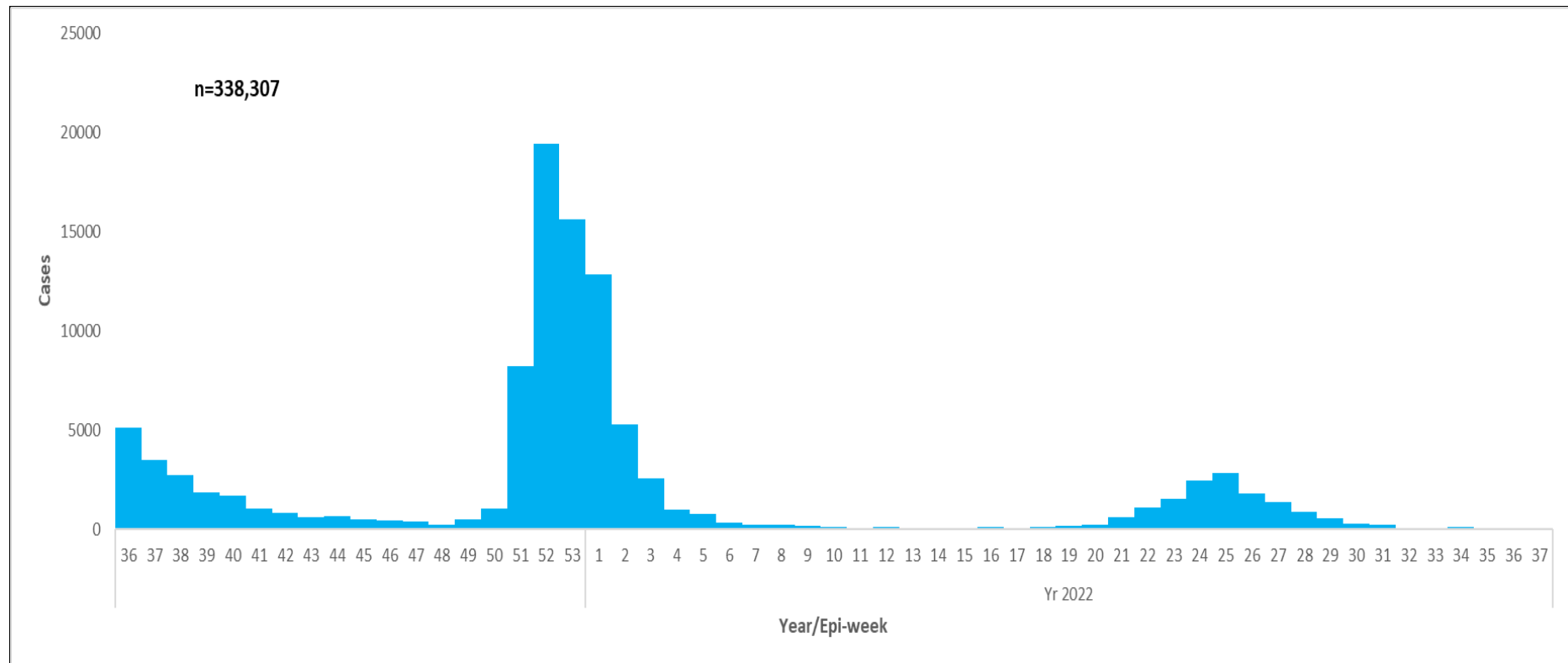


Figure 1: Trends of COVID-19 outbreak in Kenya in the last one year

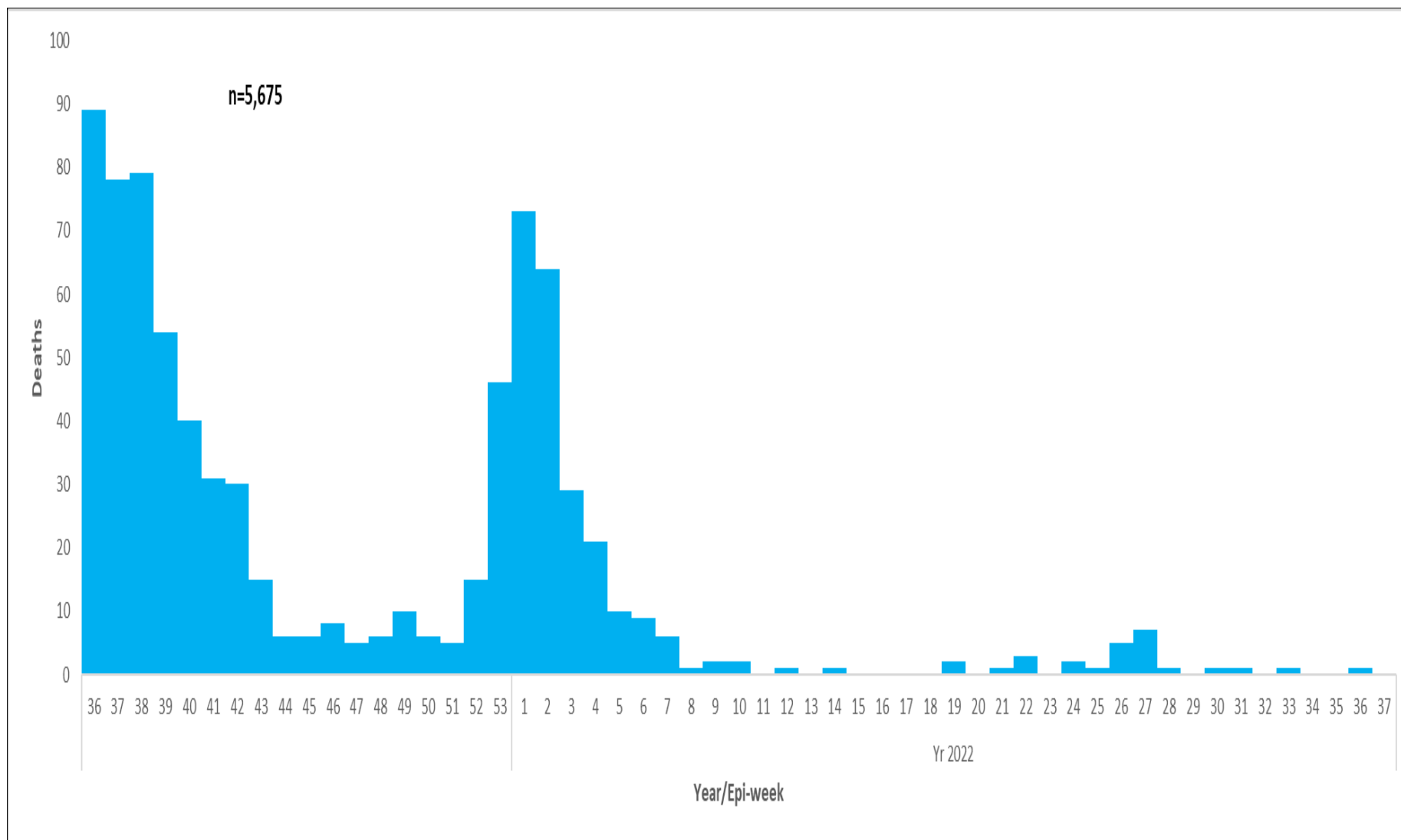


Figure 2: Trends of COVID-19 deaths in Kenya in the last one year

1.2 Laboratory testing

WHO recommends that one of the indicators that the pandemic is under control, is when < 5% of samples tested are positive for COVID-19 for the past 2 weeks, assuming that surveillance for suspected cases is comprehensive and the testing rate of suspect cases, is optimum at least 1/1000 population/week. The laboratory test rate currently stands at **81350.2** samples per 1,000,000 people. Figure 3 shows the weekly testing rate/1000 population/week for the last year.

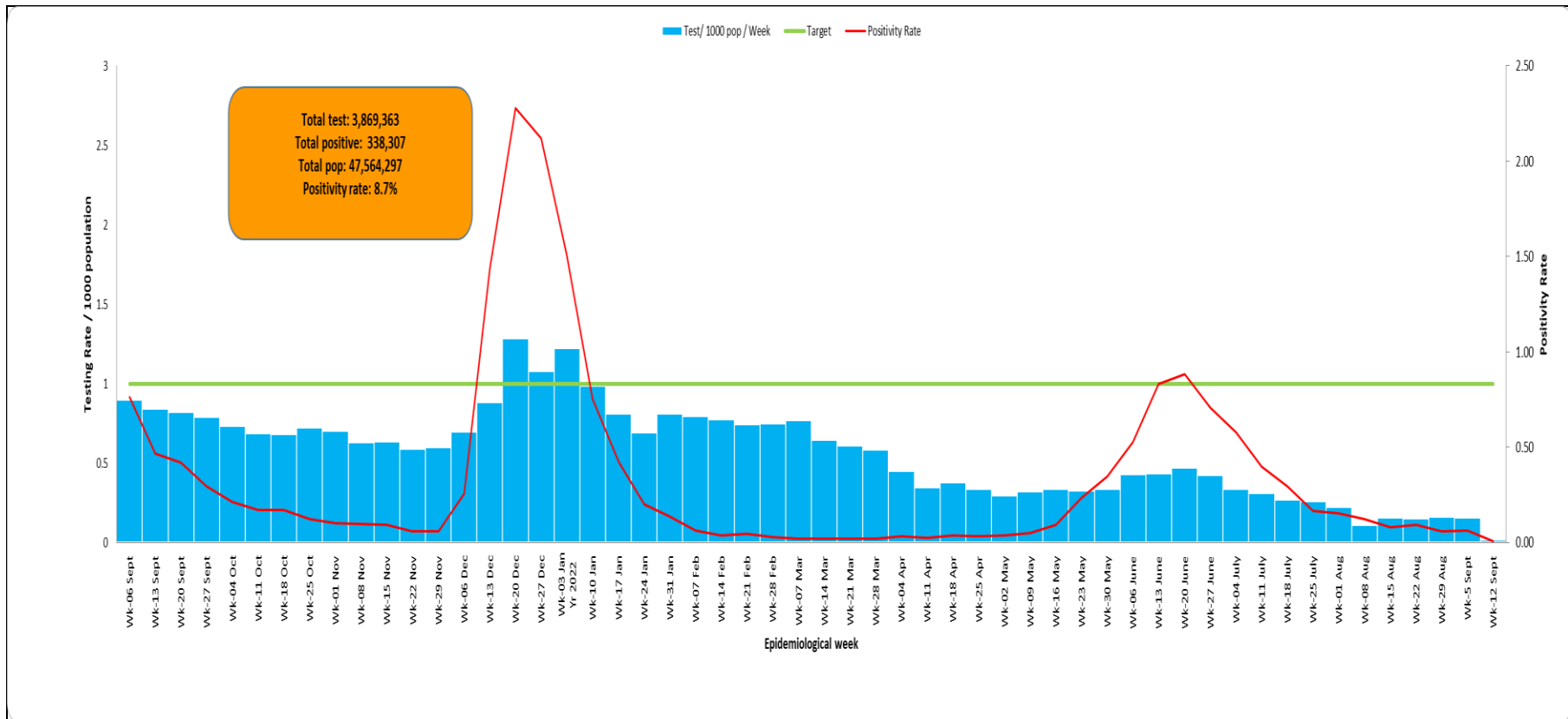


Figure 3: Laboratory Tests Conducted by Date Results were Shared

1.3 Age and Sex Distribution of COVID Confirmed Cases and Deaths

A total of **190,363 (56%)** of the cumulative cases are males and **147,943 (44%)** are females. Most cases, **87,192 (26%)** are in the age group of **30-39 years**. Of the **5674** cumulative deaths, **3,610 (64%)** are males and **2,065 (36%)** are females.

Figure 4 below shows the age and sex distribution of COVID-19 cases by the outcome.

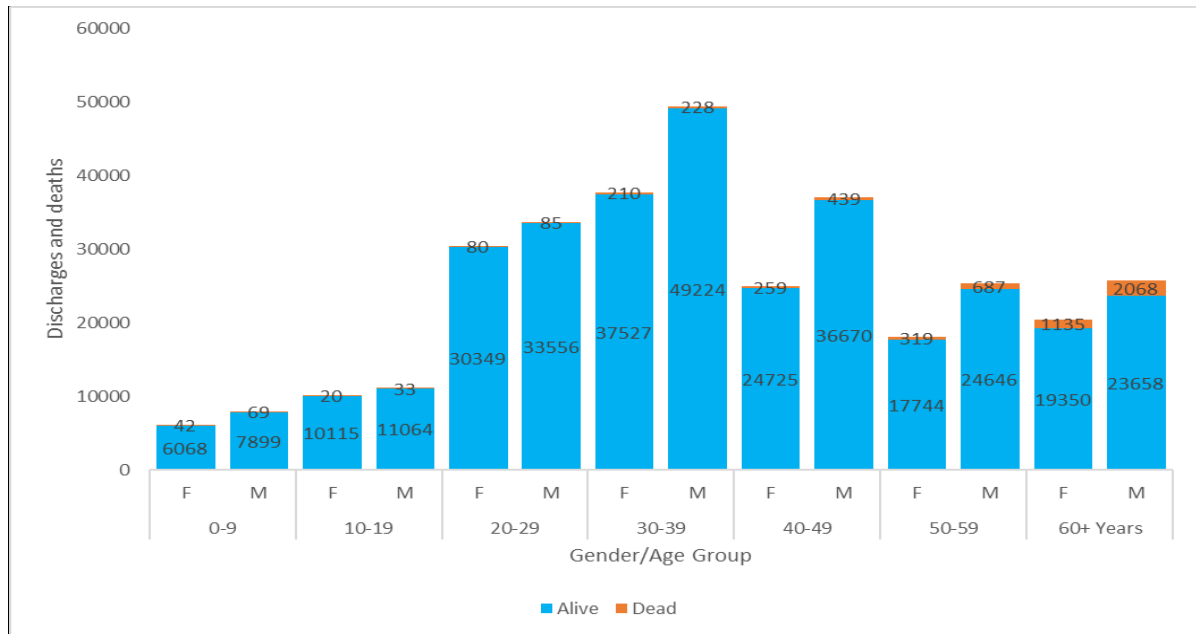


Figure 4: Age and Sex Distribution of COVID-19 Cases by the outcome in Kenya

1.4 Distribution of Confirmed COVID-19 Cases and Deaths by County of Diagnosis

Of the **338,307** cumulative cases, **139,890 (41.3%)** are from **Nairobi** County followed by **Kiambu** County with **21,222 (6.3%)**, while **Wajir** County recorded the lowest number of cases, **300 (0.09%)** as shown in Table 1.

Table 1: Distribution of confirmed COVID-19 Cases and deaths by County of Diagnosis

County	Population	Covid-19 Cases	Attack Rates	Deaths	CFR
Nairobi	4397073	139890	3181.43	1558	1.11
Kiambu	2417735	21222	877.76	552	2.60
Mombasa	1208333	18216	1507.53	337	1.85
Nakuru	2162202	17609	814.40	538	3.06
Uasin Gishu	1163186	10855	933.21	243	2.24
Kisumu	1155574	7952	688.14	85	1.07
Machakos	1421932	7709	542.15	194	2.52

County	Population	Covid-19 Cases	Attack Rates	Deaths	CFR
Kajiado	1117840	7686	687.58	77	1.00
Kilifi	1453787	7388	508.19	35	0.47
Siaya	993183	7113	716.18	120	1.69
Busia	893681	6621	740.87	53	0.80
Nyeri	759164	6186	814.84	176	2.85
Kericho	901777	5964	661.36	68	1.14
Kitui	1136187	5248	461.90	111	2.12
Murang'a	1056640	4652	440.26	230	4.94
Kakamega	1867579	4252	227.67	119	2.80
Meru	1545714	4141	267.90	114	2.75
Kisii	1266860	3761	296.88	112	2.98
Bungoma	1670570	3382	202.45	5	0.15
Migori	1116436	3362	301.14	62	1.84
Laikipia	518560	3305	637.34	26	0.79
Makueni	987653	3102	314.08	101	3.26
Nyandarua	638289	3032	475.02	67	2.21
Garissa	841353	2758	327.81	98	3.55
Turkana	926976	2710	292.35	24	0.89
Embu	608599	2688	441.67	62	2.31
Trans Nzoia	990341	2443	246.68	9	0.37
Nandi	885711	2361	266.57	34	1.44
Kirinyaga	610411	2322	380.40	76	3.27
Homa Bay	1131950	2155	190.38	100	4.64
Nyamira	605576	2116	349.42	18	0.85
Taita Taveta	340671	2060	604.69	42	2.04
Baringo	666763	1697	254.51	14	0.82
Bomet	875689	1692	193.22	29	1.71
Narok	1157873	1395	120.48	24	1.72
Kwale	866820	1369	157.93	11	0.80
Tharaka Nithi	393177	1256	319.45	8	0.64
Vihiga	590013	1097	185.93	30	2.73
Marsabit	459785	997	216.84	2	0.20
West Pokot	621241	891	143.42	1	0.11
Lamu	143920	779	541.27	13	1.67
Isiolo	268002	776	289.55	43	5.54
Elgeyo Marakwet	454480	532	117.06	10	1.88
Tana River	315943	469	148.44	1	0.21
Mandera	867457	468	53.95	36	7.69
Samburu	310327	328	105.69	1	0.30
Wajir	781263	300	38.40	6	2.00

1.5 Map of Kenya showing COVID-19 attack rate and by County per 100,000 population

In **epi-week 36**, **Trans Nzoia** County recorded the highest attack rate of **1.0** followed by **Nairobi City** County at **0.8** per 100,000 population (Figure 5).

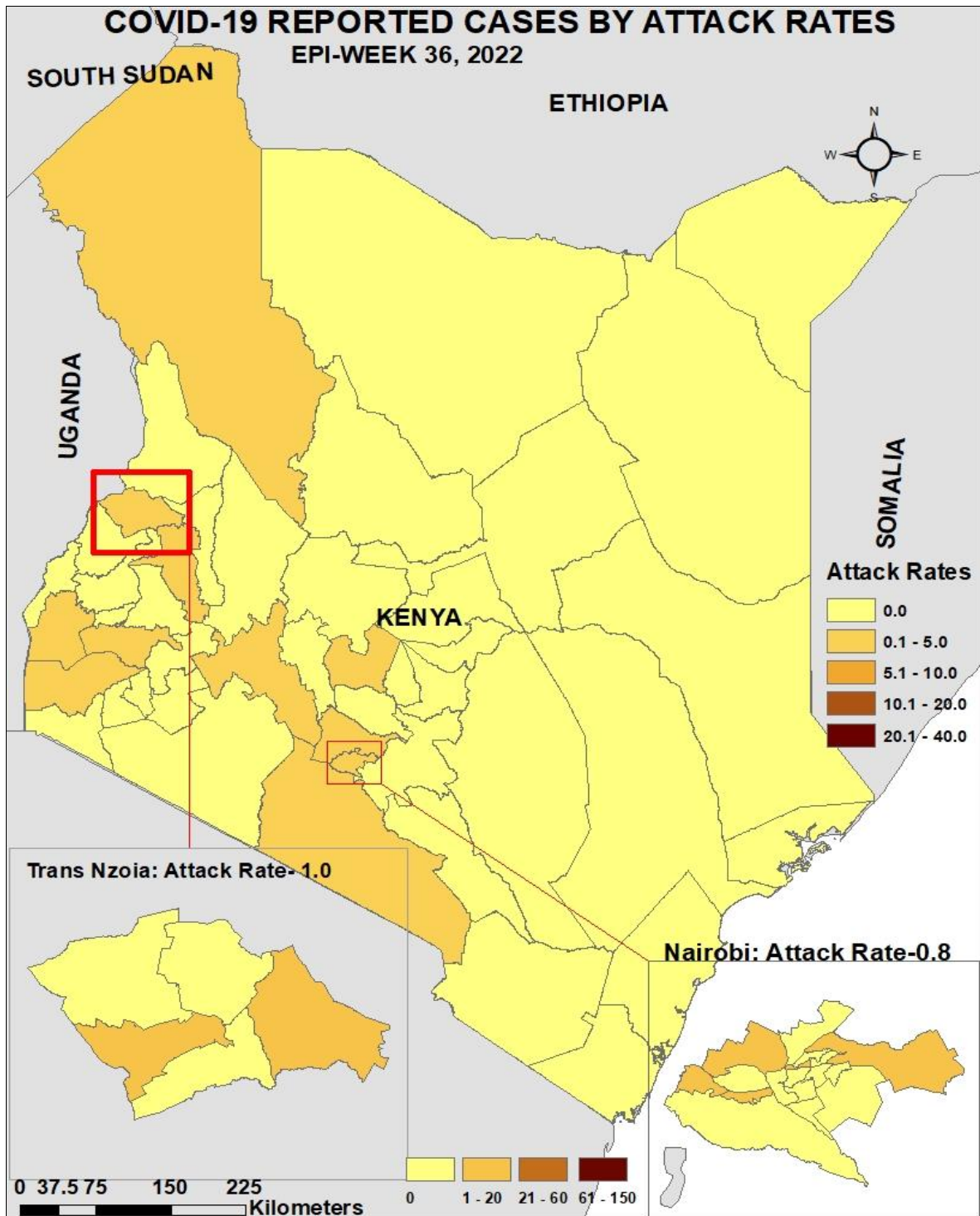


Figure 5: County Attack Rate per 100,000 Population

1.6 Map of Kenya showing COVID-19 caseload by County

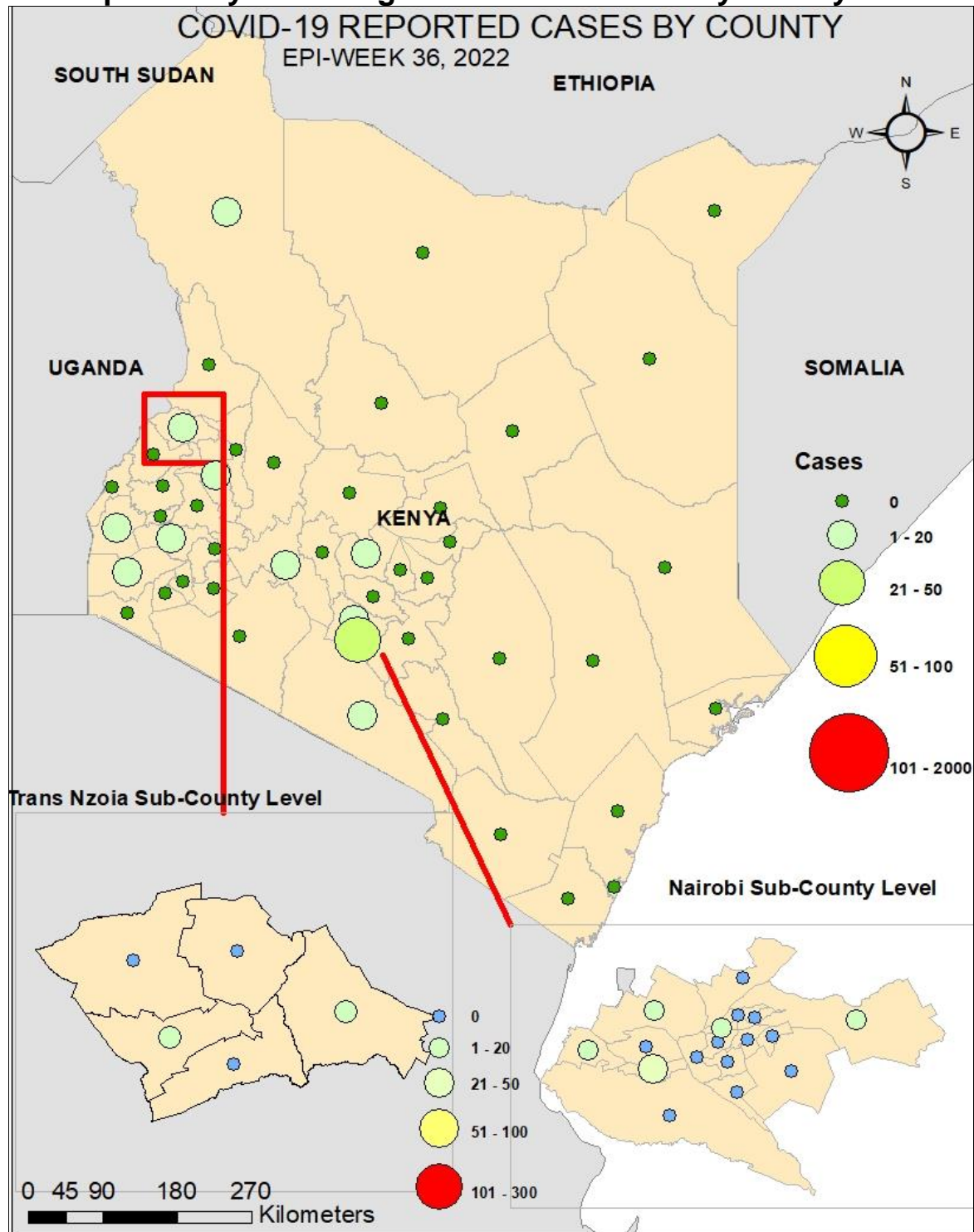


Figure 6 Case-loads by county

1.7 Kenya COVID-19 Vaccination Updates



Partially vaccinated: >18yrs- 2,255,477 **15 to <18 yrs- 874,600** **<15yrs- 381,189**
Fully Vaccinated: >18yrs- 9,482,253 **15 to <18 yrs- 541,396** **<15yrs- 49,071**
Booster Doses: >18yrs- 1,181,630

The Kenya Ministry of Health launched the National COVID-19 vaccinations on the 5th of March 2021. As of **11th September 2022**, a total of **2,255,477 persons** were vaccinated with the 1st dose, and **9,482,253 persons** were fully vaccinated.

Table 2: Vaccine Doses Dispensed as of 11th September 2022

Vaccine	Total doses Administered
Partially vaccinated adults	2,255,477
Fully vaccinated adults	9,482,253
Booster doses	1,181,630
Total doses (All Vaccines + Sputnik)	21,356,904
Partially Vaccinated 15- below 18 years	874,600
Fully Vaccinated 15- below 18 years	541,396
Partially Vaccinated below 15 years	381,189
Fully Vaccinated below 15 years	49,071
% of adults fully vaccinated	34.8%

The highest proportion of the population fully vaccinated is in **Nyeri County** at **53.7%** and the least is in **Mandera County** at **10.4%** (Table 3).

Table 3: Proportion of fully Vaccinated by County, 9th September 2022

County	Number of adults fully vaccinated	Target Population above 18 years	% of fully vaccinated adults	County	Number of adults fully vaccinated	Target Population above 18 years	% of fully vaccinated adults
Nyeri	273,677	510,028	53.7%	Bungoma	280,907	843,735	33.3%
Nairobi	1,611,581	3,052,494	52.8%	Makueni	192,843	584,379	33.0%
Kisumu	298,107	656,147	45.4%	Nyandarua	124,306	376,776	33.0%
Siaya	239,032	536,031	44.6%	Kericho	166,820	508,980	32.8%
Kakamega	436,705	982,838	44.4%	Meru	289,763	949,186	30.5%
Nyamira	149,054	341,397	43.7%	Elgeyo Marakwet	67,045	243,690	27.5%
Nakuru	522,444	1,273,265	41.0%	Nandi	133,231	492,652	27.0%
Laikipia	123,605	306,448	40.3%	Baringo	85,454	338,937	25.2%
Migori	221,836	557,657	39.8%	Lamu	19,728	83,433	23.6%
Taita Taveta	83,664	213,335	39.2%	Kitui	141,619	624,506	22.7%
Homa Bay	234,747	608,326	38.6%	Turkana	104,344	468,878	22.3%
Kirinyaga	157,647	413,708	38.1%	Samburu	31,996	145,608	22.0%
Kisii	263,057	697,445	37.7%	Kilifi	139,393	784,567	17.8%
Muranga	254,399	675,364	37.7%	Kwale	78,915	451,261	17.5%
Trans Nzoia	193,619	518,077	37.4%	Bomet	76,687	465,963	16.5%
Kiambu	596,283	1,623,545	36.7%	Narok	85,234	548,229	15.5%
Machakos	325,299	905,172	35.9%	West Pokot	42,439	283,727	15.0%
Kajiado	234,176	663,201	35.3%	Garissa	54,813	399,358	13.7%
Uasin Gishu	243,628	693,570	35.1%	Isiolo	17,578	133,358	13.2%
Busia	162,131	465,190	34.9%	Wajir	37,397	337,296	11.1%
Mombasa	279,049	804,202	34.7%	Tana River	16,651	151,051	11.0%
Vihiga	114,054	329,317	34.6%	Marsabit	23,133	219,170	10.6%
Tharaka Nithi	85,225	246,699	34.5%	Mandera	35,593	341,857	10.4%
Embu	133,345	395,980	33.7%	Total	9,482,253	27,246,033	34.8%

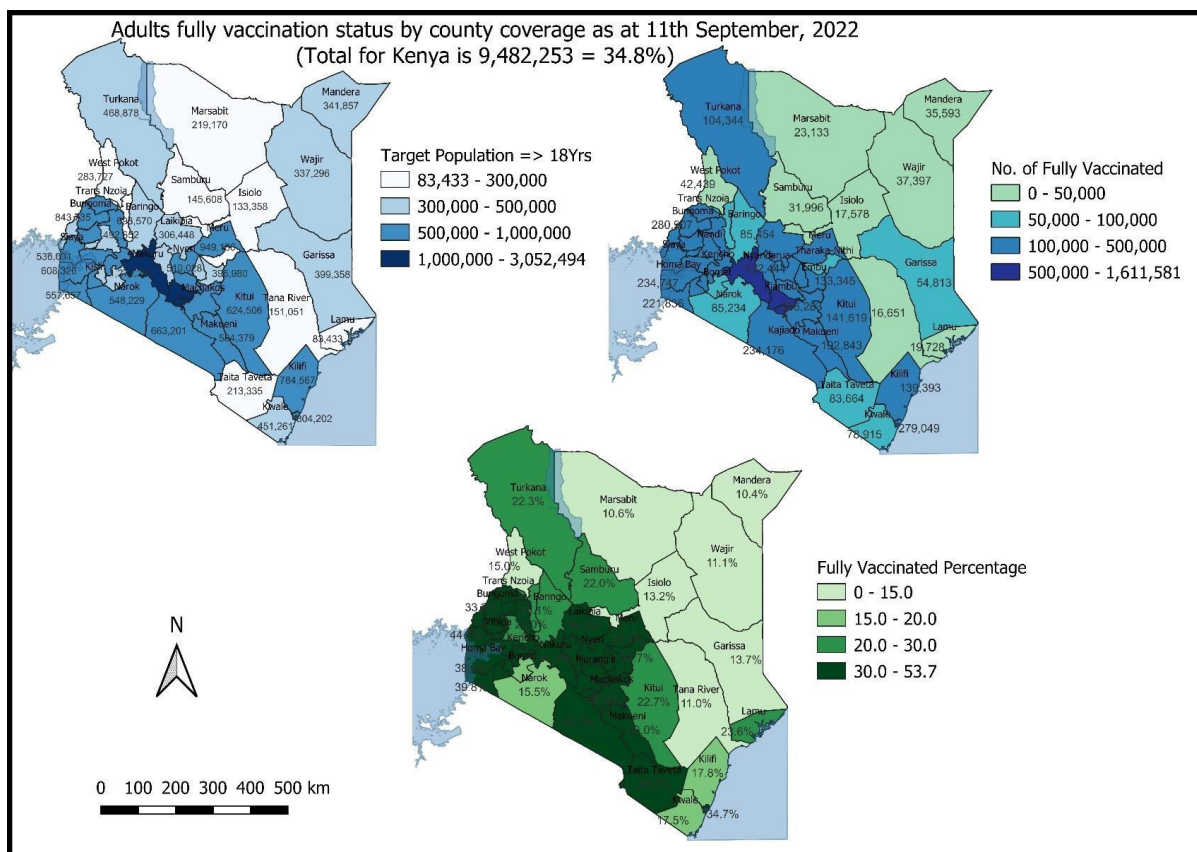


Figure 7: Adult full vaccination coverage by county

2.0 KEY ACTIONS

2.1 Coordination

- Response efforts continue to be coordinated through a whole government and multi-agency approach following Executive Order No. 2 of 2021 issued by His Excellency the President on 26th March 2021.
- The National Emergency Response Committee that was constituted following the executive order meets regularly to provide policy directions on response efforts towards the COVID-19 outbreak.
- The Public Health Emergency Operation Centre is fully activated and continues to coordinate response measures as well as provide daily situation reports informing planning.

2.2 Case Management and Infection Prevention & Control

- Currently, COVID-19 cases are being managed as inpatients and in home-based care

- Zero (0) COVID-19 cases are currently admitted to the intensive care unit: zero (0) on ventilatory support, zero (0) on supplemental oxygen, and zero (0) under observation.
- The IPC measures being implemented include: handwashing/sanitization, use of face masks in public transport, and social distancing in social places

2.3 Surveillance, laboratory, and Point of Entries

- The Diagnostic capacity in the Country has been scaled up. A total of ninety-six (96) public and private laboratories conduct PCR tests and 472 Rapid Diagnostic Tests (RDT). Genomic sequencing is done on sampled cases to identify new variants.
- Screening of cargo vessel crew at all points of entry to detect positive individuals.

3.0 KEY CHALLENGES

- Irregular reporting of COVID-19 data from counties/sub-counties to the national level
- High staff turn-over of trained personnel
- Suboptimal use of data in counties and sub-counties shared by national level for follow-up and decision making
- Inadequate resources to facilitate critical response pillars limiting response capacity in detecting, investigating, and follow-up of cases.

4.0 RECOMMENDATIONS AND NEXT STEPS

- Enhanced integrated disease surveillance at all levels
- Regular submission of daily COVID-19 data to the national level by counties
- Counties are encouraged to carry out investigations and institute control measures for areas with clustering of cases.
- Dissemination and utilization of data to make informed public health decisions at all levels
- Continuous capacity building of staff on surveillance

Emergency Operation Centre:

Telephone: 0729 471 414, 0732 353 535, 0800 721316(Toll Free)

COVID-19 Call centre: *719# (short message only), 719 (Audio)

COVID-19 Dashboard: https://khro.health.go.ke/#/covid_19_tracker

Email: manager.eockenya@gmail.com